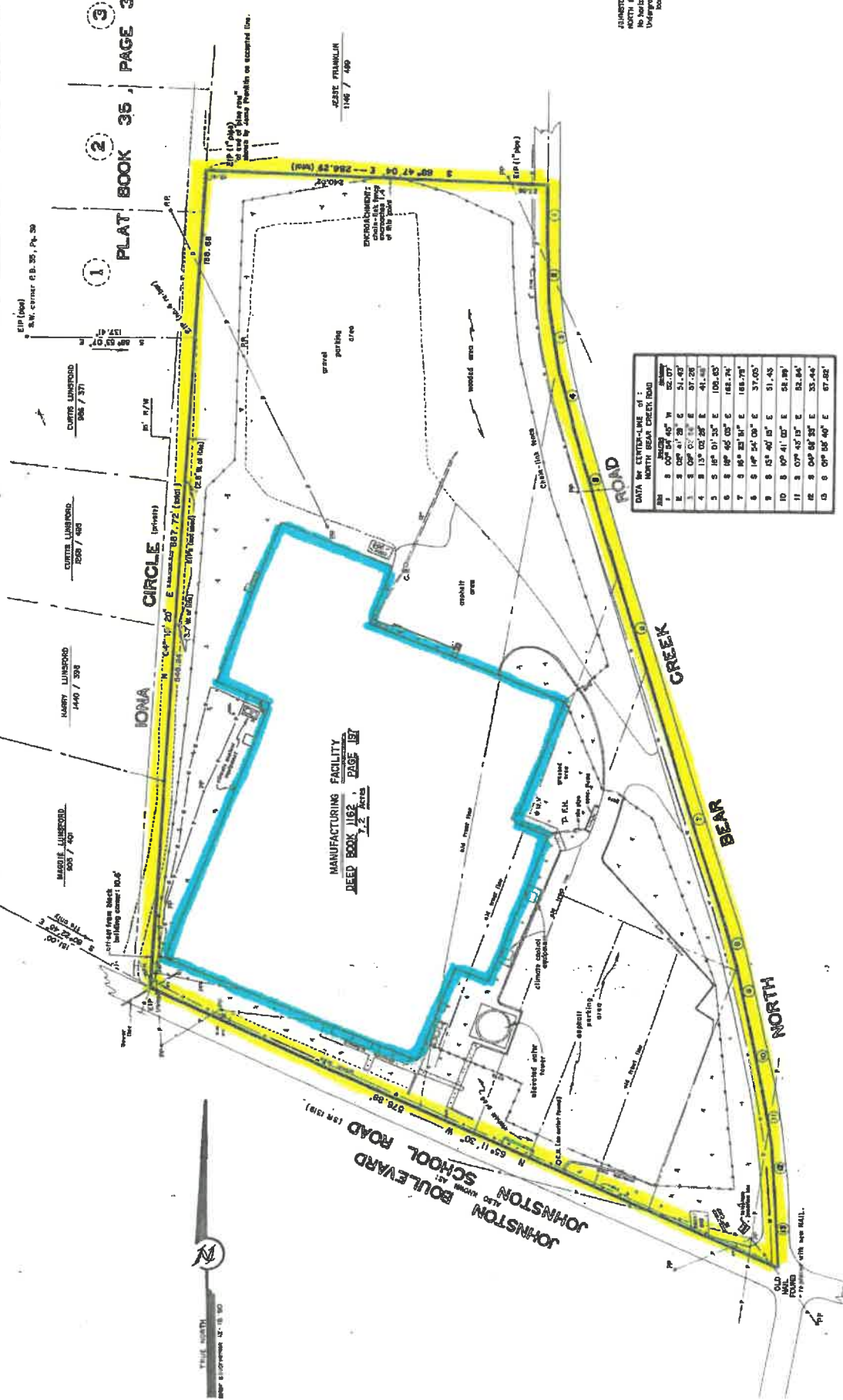


PLAT BOOK 35 PAGE 39



LEGEND
 EPR - Easement from P/W/Power
 P/E - Utility Pole
 P/E - Fire Hydrant
 W/W - Water Valve
 C/P - Curved arrow pipe
 G/P - Gas pipe
 S/P - Sewer pipe
 A/P - Air pipe
 C/P - Concrete
 G/P - Gas meter
 C/P - Catch basin / trap hold

NOTES:
 JOHNSTON SCHOOL ROAD is subject to a 60' NORTH BEAR CREEK ROAD to a width of 30' R/W (where underground utilities shown) within 2000' bearing north-south.



DATA for CENTERLINE of :
 NORTH BEAR CREEK ROAD

Sta	Angle	Distance	Bearing
1	90° 00' 00" W	52.07'	
2	02° 41' 28" E	51.40'	
3	02° 41' 28" E	51.40'	
4	13° 03' 58" E	57.28'	
5	12° 01' 30" E	41.48'	
6	12° 01' 30" E	106.85'	
7	12° 01' 30" E	181.74'	
8	12° 01' 30" E	181.74'	
9	12° 01' 30" E	37.00'	
10	12° 01' 30" E	51.43'	
11	07° 43' 13" E	54.39'	
12	07° 43' 13" E	54.34'	
13	07° 43' 13" E	35.44'	
14	07° 43' 13" E	57.52'	

SURVEY 200:
LUIS LEE AND WIFE TERESITA LEE
 CITY OF ASHVILLE - Ward 6
 BUNCOMBE COUNTY, NORTH CAROLINA
 SCALE: 1" = 50'
 DATE: 28 DEC. 1980

Adopted by Resolution, No. 145
 12/20/1980
 BUNCOMBE COUNTY COMMISSIONERS

Adopted by Resolution, No. 145
 12/20/1980
 BUNCOMBE COUNTY COMMISSIONERS

Adopted by Resolution, No. 145
 12/20/1980
 BUNCOMBE COUNTY COMMISSIONERS

REVISIONS:
 12/20/1980 - Original Issuance.
 12/20/1980 - Revised from encumbrance along western line.
 12/20/1980 - Revised from encumbrance along western line.
 12/20/1980 - Revised from encumbrance along western line.

I, **John K. Robison, S.S.**, certify that this plat was drawn from an actual survey made by me or under my supervision. That the ratio of precision is at least 1 in 10,000 and conforms to G.S. 47-30 as amended. I subscribe my original signature and seal this 12th day of December, 1980, at Asheville, N.C.

John K. Robison
 L-3667

STATE OF NORTH CAROLINA, COUNTY OF BUNCOMBE
 I, **Henry P. Robison**, County Clerk, do hereby certify that this plat was filed for record in the office of the County Clerk on the 12th day of December, 1980, at Asheville, N.C.

Henry P. Robison
 County Clerk

STATE OF NORTH CAROLINA, COUNTY OF BUNCOMBE
 I, **John K. Robison, S.S.**, certify that this plat was drawn from an actual survey made by me or under my supervision. That the ratio of precision is at least 1 in 10,000 and conforms to G.S. 47-30 as amended. I subscribe my original signature and seal this 12th day of December, 1980, at Asheville, N.C.

John K. Robison
 L-3667

STATE OF NORTH CAROLINA, COUNTY OF BUNCOMBE
 I, **Henry P. Robison**, County Clerk, do hereby certify that this plat was filed for record in the office of the County Clerk on the 12th day of December, 1980, at Asheville, N.C.

Henry P. Robison
 County Clerk

