

GATEWAY MEDICAL CENTER

6121 N State Highway 161
Irving, TX 75063

Medical Office For Lease

2,186 - 2,553 SF



Leasing Information:
214.461.2302

Peter Shaw **Douglas Maclay**
214.461.2302 214.461.2371
PShaw@lpc.com dmaclay@lpc.com

Lincoln

8140 Walnut Hill Lane
Suite 700
Dallas, TX 75231

www.lpc.com

GATEWAY MEDICAL CENTER

6121 N State Highway 161 | Irving, TX 75063

Property Summary

2,186 - 2,553 SF



Location Description

Discover a dynamic and vibrant community surrounding Gateway Medical Center. Located in Irving, TX, this thriving area offers a wealth of amenities tailored to the needs of medical tenants. Enjoy easy access to a diverse array of restaurants, retail outlets, hotels, and daycare facilities, as well as nearby residential neighborhoods. Positioned just moments away from the DFW International Airport, the area presents a prime location for medical professionals. With a range of conveniences at your doorstep, including the nearby President George Bush Turnpike and the DART Belt Line Station, this bustling locale is an ideal choice for your practice seeking a bustling, yet convenient, location.

Property Highlights

- State-of-the-art healthcare facility with anchor tenant UT Southwestern Primary Care and Ambulatory Surgery Center
- Monument Signage Available
- Adjoining primary care referrals at Healthcare Associates of Texas
- Convenient accessibility via N Belt Line Road and President George Bush Turnpike
- Proximity to the DART Belt Line Station
- Strategic location just two minutes from DFW International Airport

Demographics	0.3 Miles	0.5 Miles	1 Mile
Total Households	1	5	1,146
Total Population	5	17	3,308
Average HH Income	\$229,565	\$229,565	\$156,152

Peter Shaw

214.461.2302
PShaw@lpc.com

Douglas Maclay

214.461.2371
dmaclay@lpc.com

Lincoln

GATEWAY MEDICAL CENTER

6121 N State Highway 161 | Irving, TX 75063

Medical Office For Lease

2,186 - 2,553 SF



Property Overview

Introducing an exceptional commercial property for lease at 6121 N State Highway 161, Irving, TX, 75063. This state-of-the-art healthcare facility boasts a prestigious anchor tenant, UT Southwestern Primary Care and Ambulatory Surgery Center, providing a sought-after presence. The property offers the convenience of primary care referrals at Healthcare Associates of Texas, just steps away. With easy accessibility via N Belt Line Road and President George Bush Turnpike, and close proximity to the DART Belt Line Station, this location is primed for success. Situated merely two minutes from DFW International Airport, this offering presents a strategic advantage in a thriving commercial hub.

Availabilities

Suite 101	2,186 SF
Suite 175	2,278 SF
Suite 275	2,553 SF



Peter Shaw

214.461.2302
PShaw@lpc.com

Douglas Maclay

214.461.2371
dmaclay@lpc.com

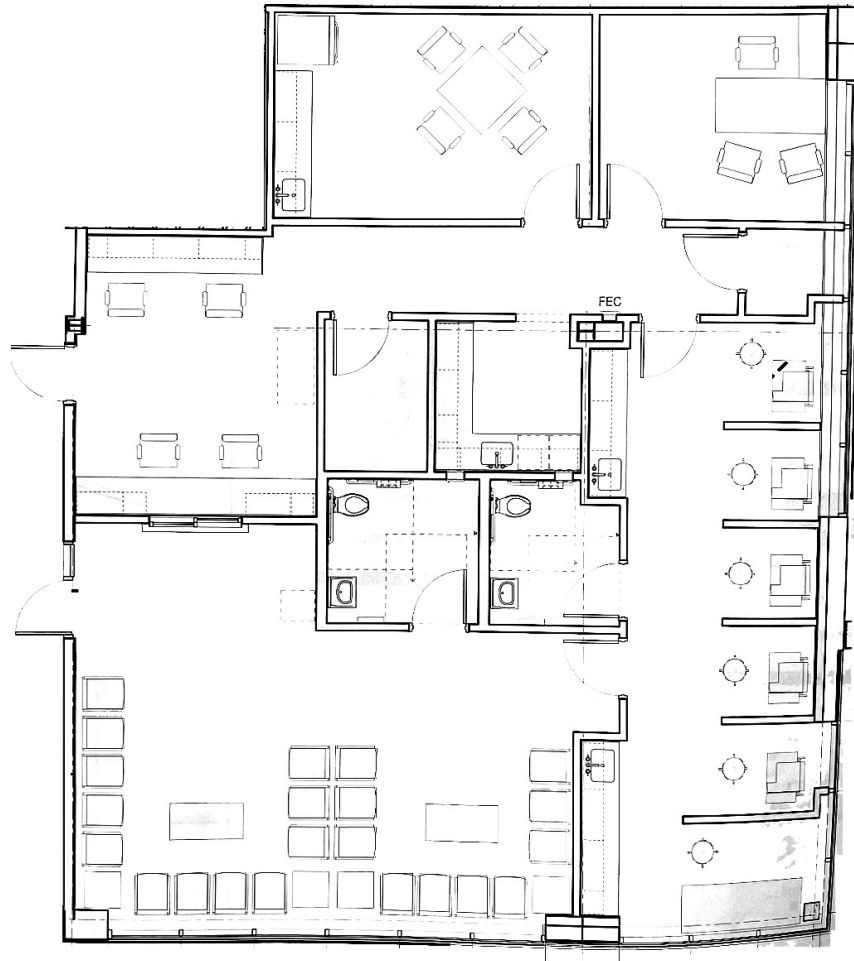
Lincoln

GATEWAY MEDICAL CENTER

6121 N State Highway 161 | Irving, TX 75063

Suite 101

2,186 SF



Suite

Suite 101

Size

2,186 SF

Peter Shaw

214.461.2302
PShaw@lpc.com

Douglas Maclay

214.461.2371
dmaclay@lpc.com

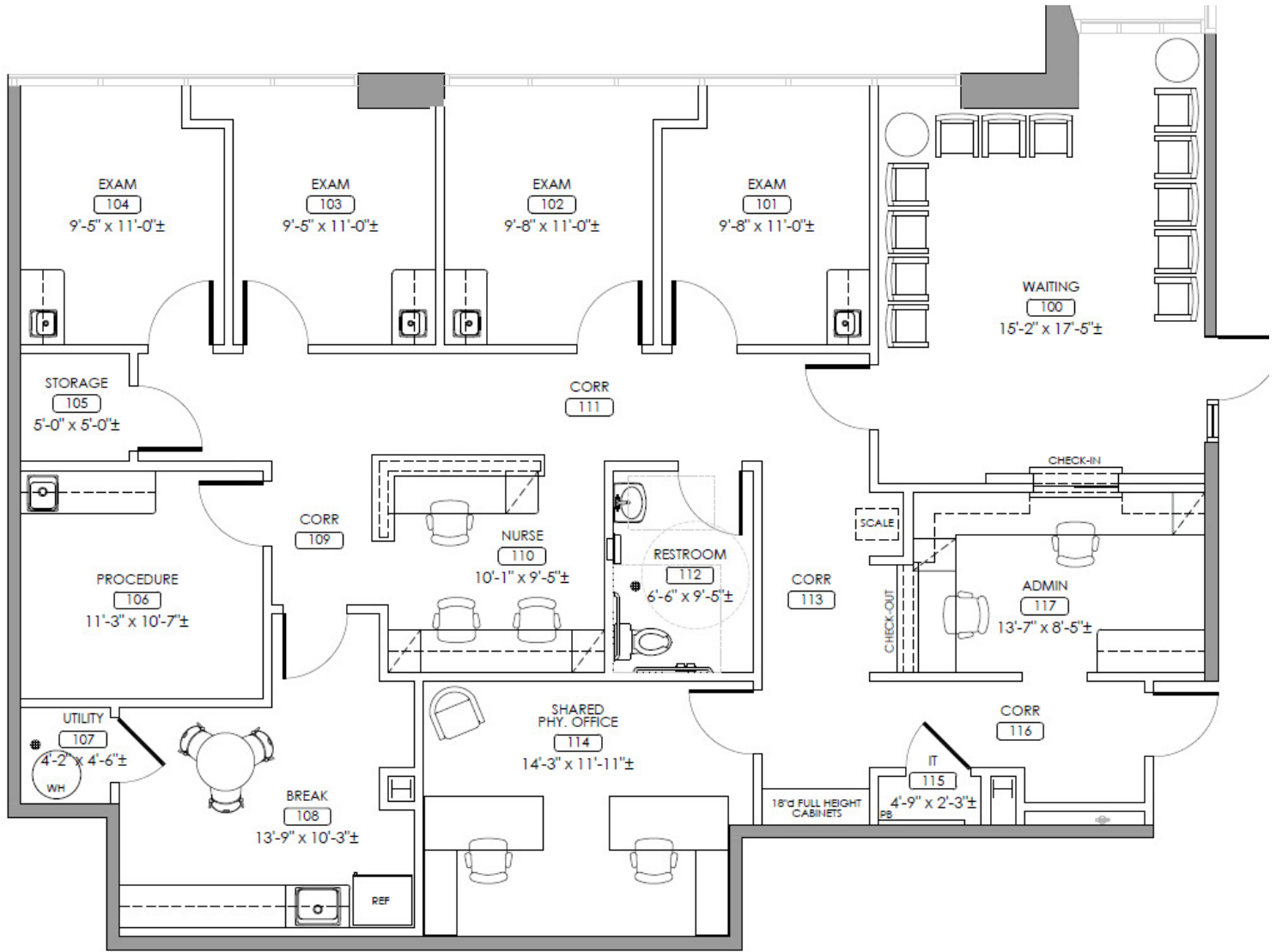
Lincoln

GATEWAY MEDICAL CENTER

6121 N State Highway 161 | Irving, TX 75063

Suite 175

2,278 SF



Suite

Size

Description

Suite 175

2,278 SF

Conceptual Spec Plan

Peter Shaw

Douglas Maclay

214.461.2302

214.461.2371

PShaw@lpc.com

dmaclay@lpc.com

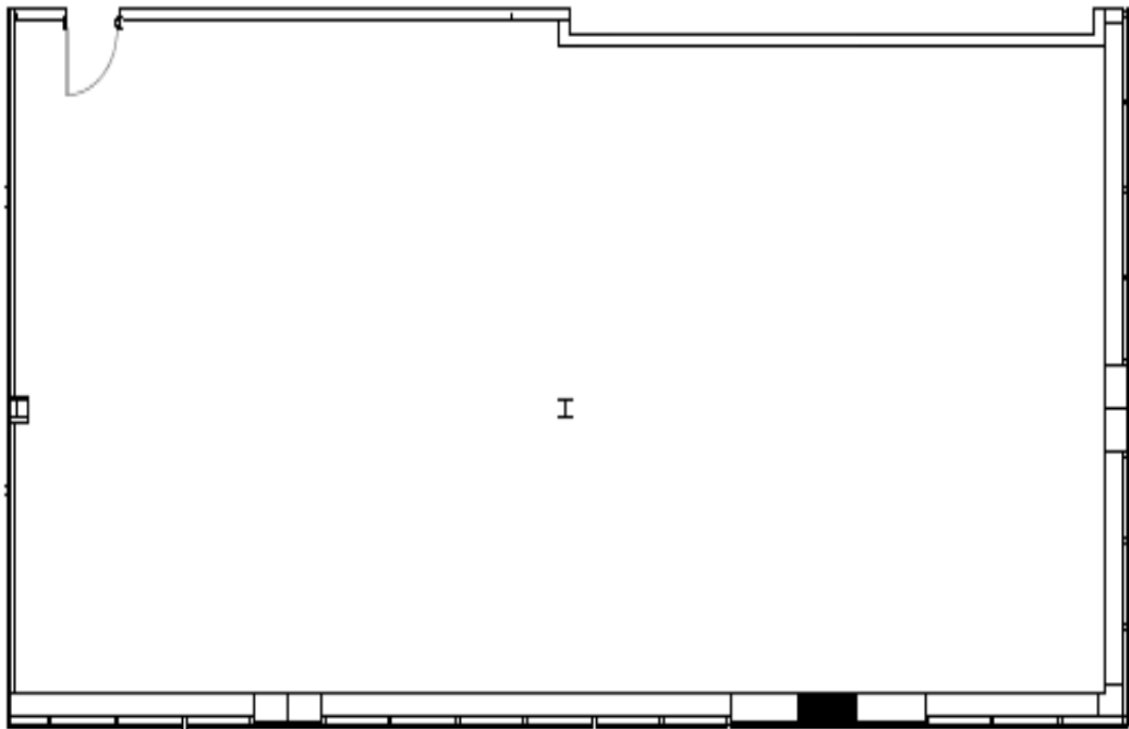
Lincoln

GATEWAY MEDICAL CENTER

6121 N State Highway 161 | Irving, TX 75063

Suite 275

2,553 SF



Suite	Size	Description
Suite 275	2,553 SF	Shell Space

Peter Shaw

214.461.2302
PShaw@lpc.com

Douglas Maclay

214.461.2371
dmaclay@lpc.com

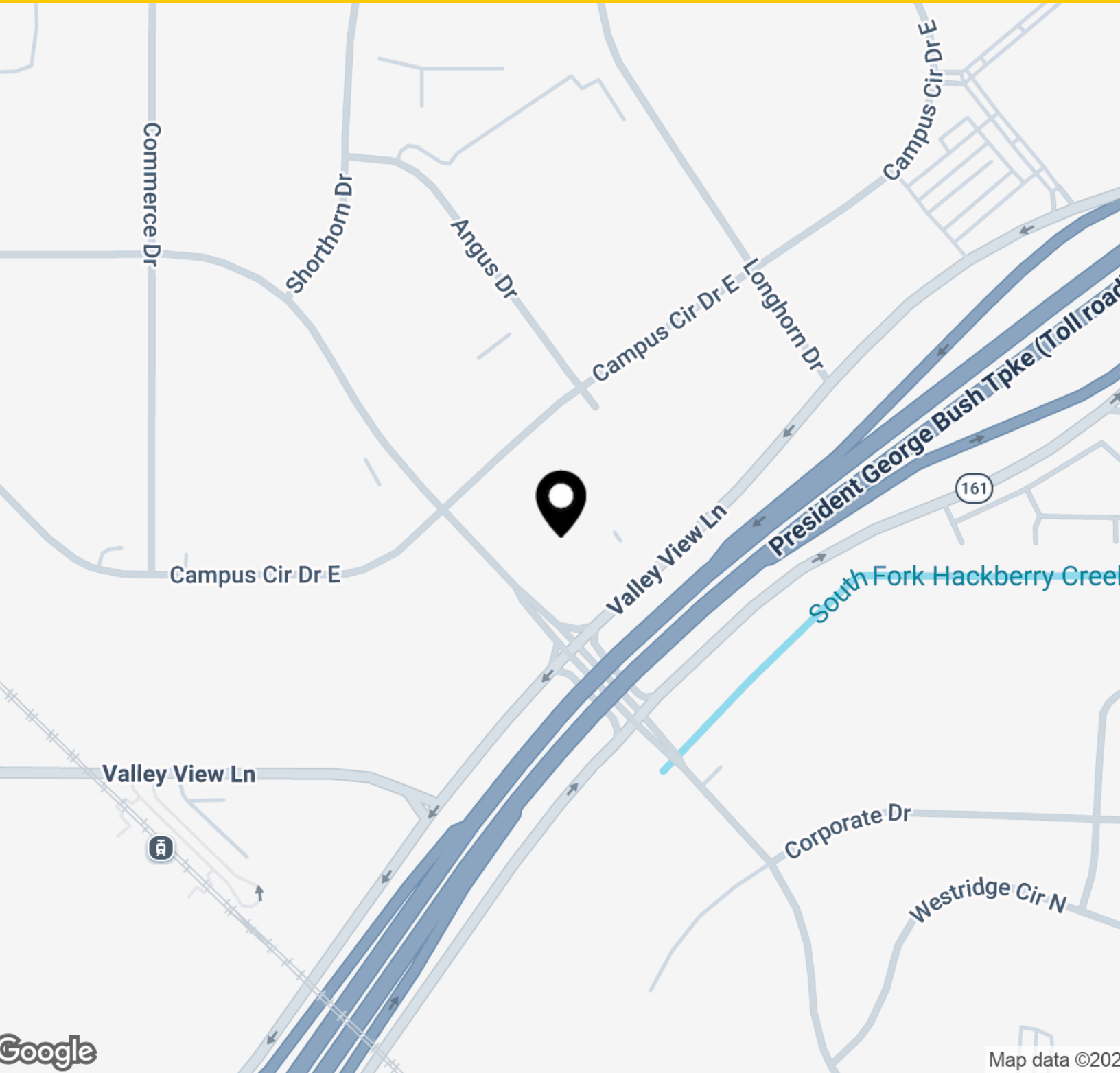
Lincoln

GATEWAY MEDICAL CENTER

6121 N State Highway 161 | Irving, TX 75063

Location Map

2,186 - 2,553 SF



Peter Shaw
214.461.2302
PShaw@lpc.com

Douglas Maclay
214.461.2371
dmaclay@lpc.com

Lincoln



GATEWAY MEDICAL CENTER

6121 N State Highway 161
Irving, TX 75063

Leasing Information:
214.461.2302

Peter Shaw
214.461.2302
PShaw@lpc.com

Douglas Maclay
214.461.2371
dmaclay@lpc.com

Lincoln

8140 Walnut Hill Lane
Suite 700
Dallas, TX 75231

www.lpc.com