

5089 W. GRAND RIVER AVE.
DETROIT, MICHIGAN

OFFICE FOR LEASE
26,741 Square Feet Available

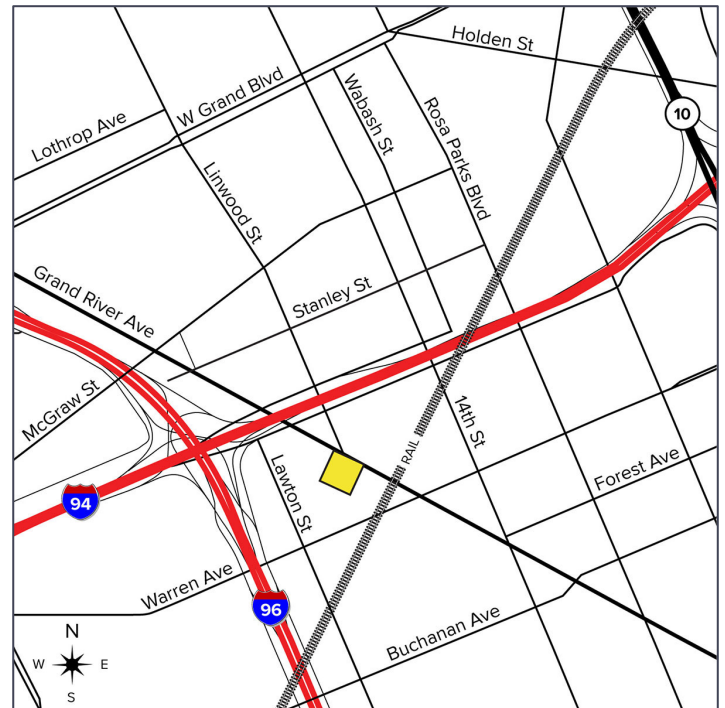


**SIGNATURE
ASSOCIATES**
KNOW SIGNATURE | KNOW RESULTS



PROPERTY FEATURES

- 26,741 square feet available
- Gated lot
- Zoned M4
- Located on 2.97 acres
- Easy access to I-94 and I-96
- 1-5 year term available
- Lease Rate: \$2.00/sq. ft. NNN



For more information, please contact:

CHRIS MONSOUR
(248) 948 0107
cmonsour@signatureassociates.com

JOE STACK
(248) 359 0615
jstack@signatureassociates.com

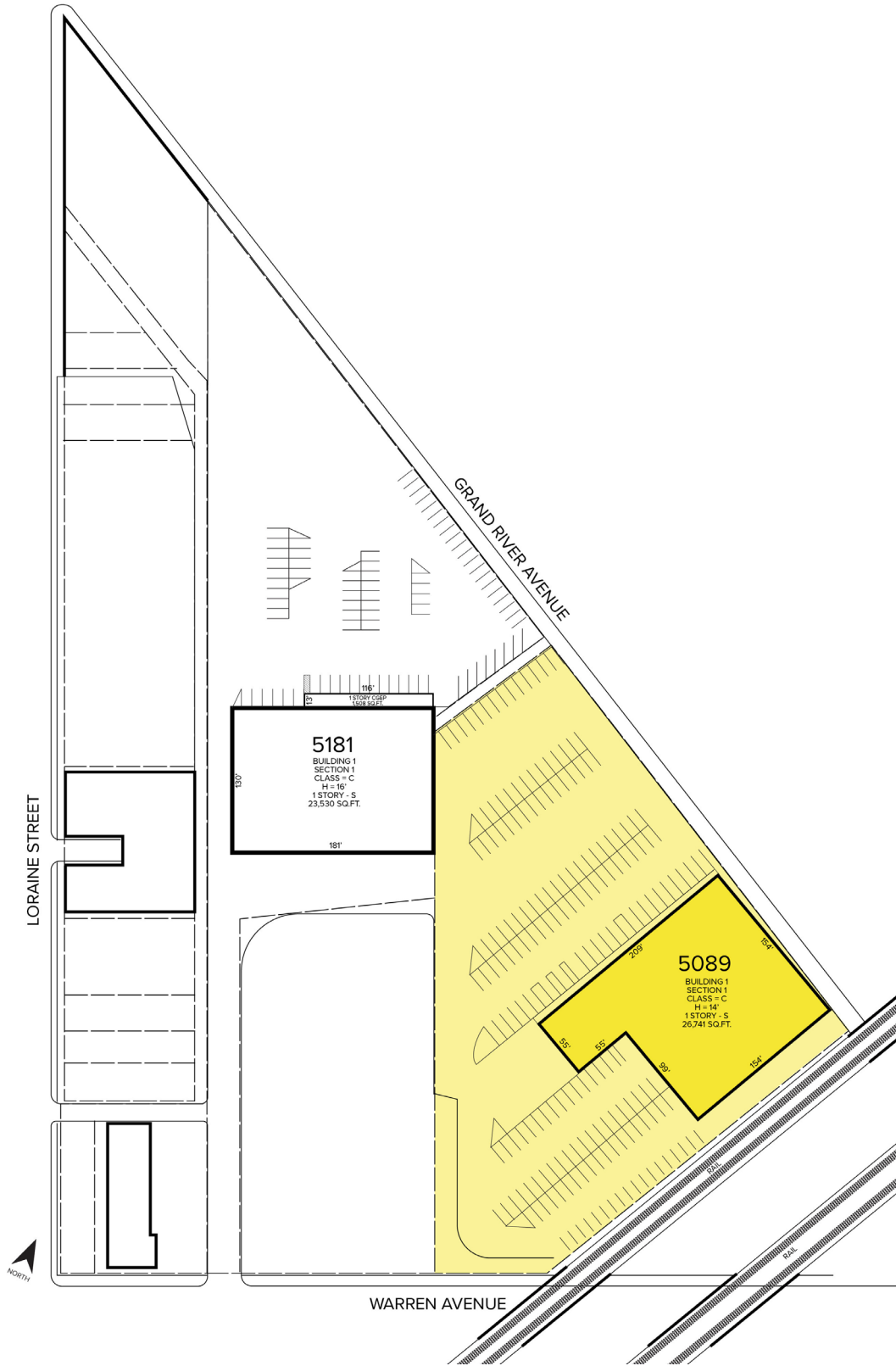
SIGNATURE ASSOCIATES
One Towne Square, Suite 1200
Southfield, MI 48076
www.signatureassociates.com

5089 W. Grand River Avenue – Detroit, Michigan

Office For Lease

26,741
Square Feet
AVAILABLE

Site Plan



For more information, please contact:

CHRIS MONSOUR
(248) 948 0107
cmonsour@signatureassociates.com

JOE STACK
(248) 359 0615
jstack@signatureassociates.com

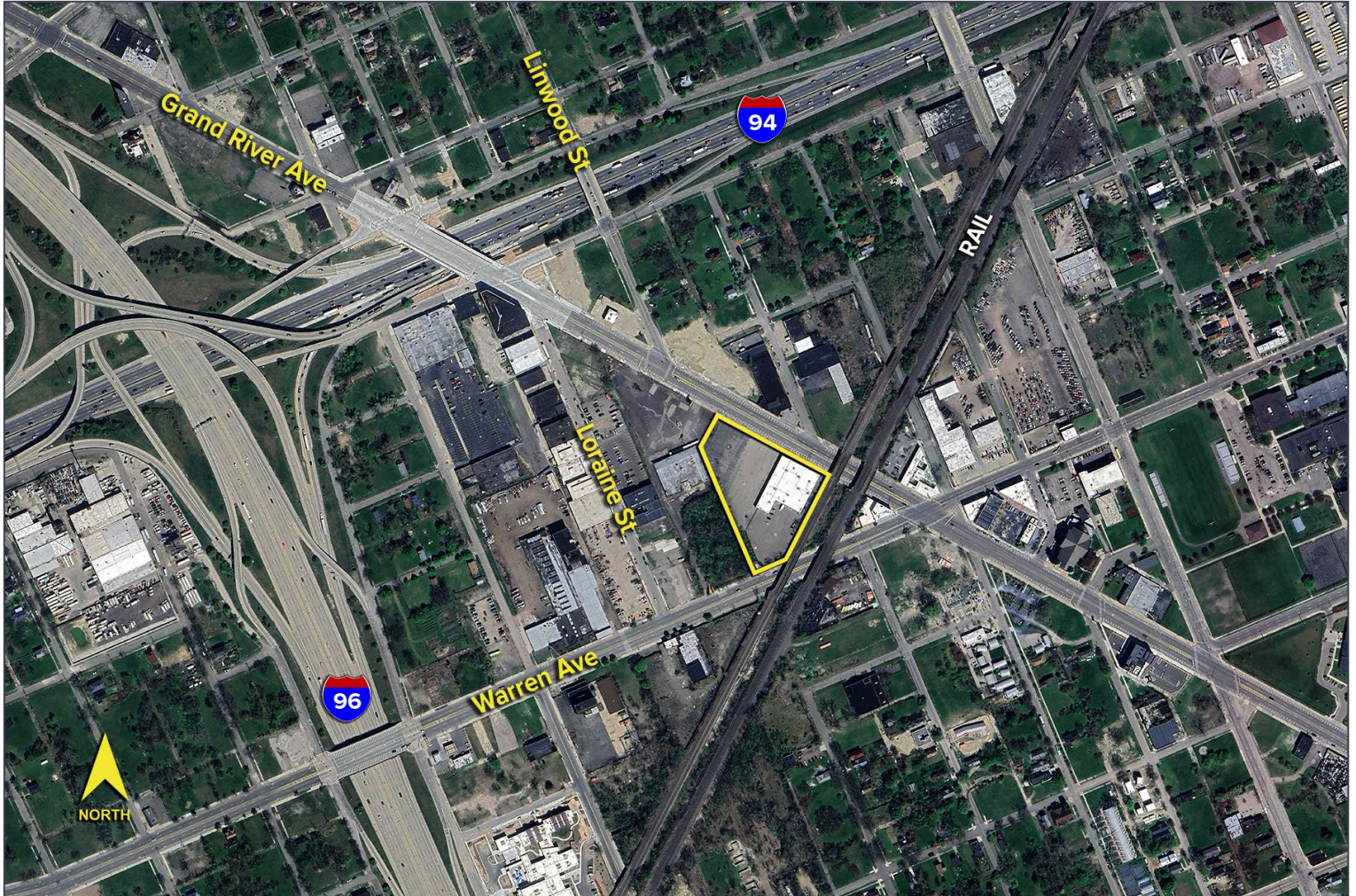
SIGNATURE ASSOCIATES
One Towne Square, Suite 1200
Southfield, MI 48076
www.signatureassociates.com

5089 W. Grand River Avenue – Detroit, Michigan

Office For Lease

26,741
Square Feet
AVAILABLE

Aerial



For more information, please contact:

CHRIS MONSOUR
(248) 948 0107
cmonsour@signatureassociates.com

JOE STACK
(248) 359 0615
jstack@signatureassociates.com

SIGNATURE ASSOCIATES
One Towne Square, Suite 1200
Southfield, MI 48076
www.signatureassociates.com