

Childcare Center Available for Sublease

323 N Gilbert Rd, Ste 109-111, Mesa, AZ 85203



BuildingKidz
Infants | Toddlers | Preschool



- Vacant, Move-in Ready Childcare Center
- For Sublease: \$18.50 PSF NNN
- Approx 7,798 SF
- Licensable for 104 Children (Infants to School-age)
- Zoned LC, City of Mesa
- Located in the Red Mountain / Mesa Submarket
- Near Retail and Business Amenities
- Close Proximity to the Loop 202, US-60, and SR-87

www.menlocre.com/property

Grafton Milne, SIOR, CCIM

Designated Broker

480.659.1777

grafton@menlocre.com

P: 480.659.1777 • F: 480.535.5854

www.menlocre.com

Childcare Center Available for Sublease

323 N Gilbert Rd, Ste 109-111, Mesa, AZ 85203

Additional Photos

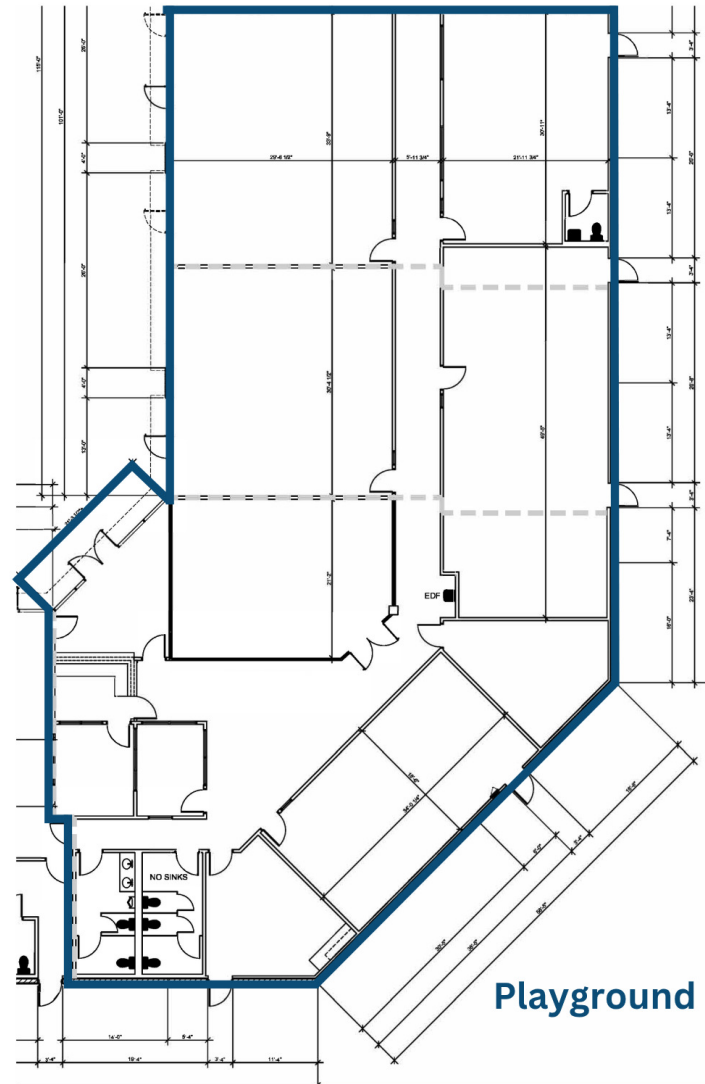
Page 2



Childcare Center Available for Sublease

323 N Gilbert Rd, Ste 109-111, Mesa, AZ 85203

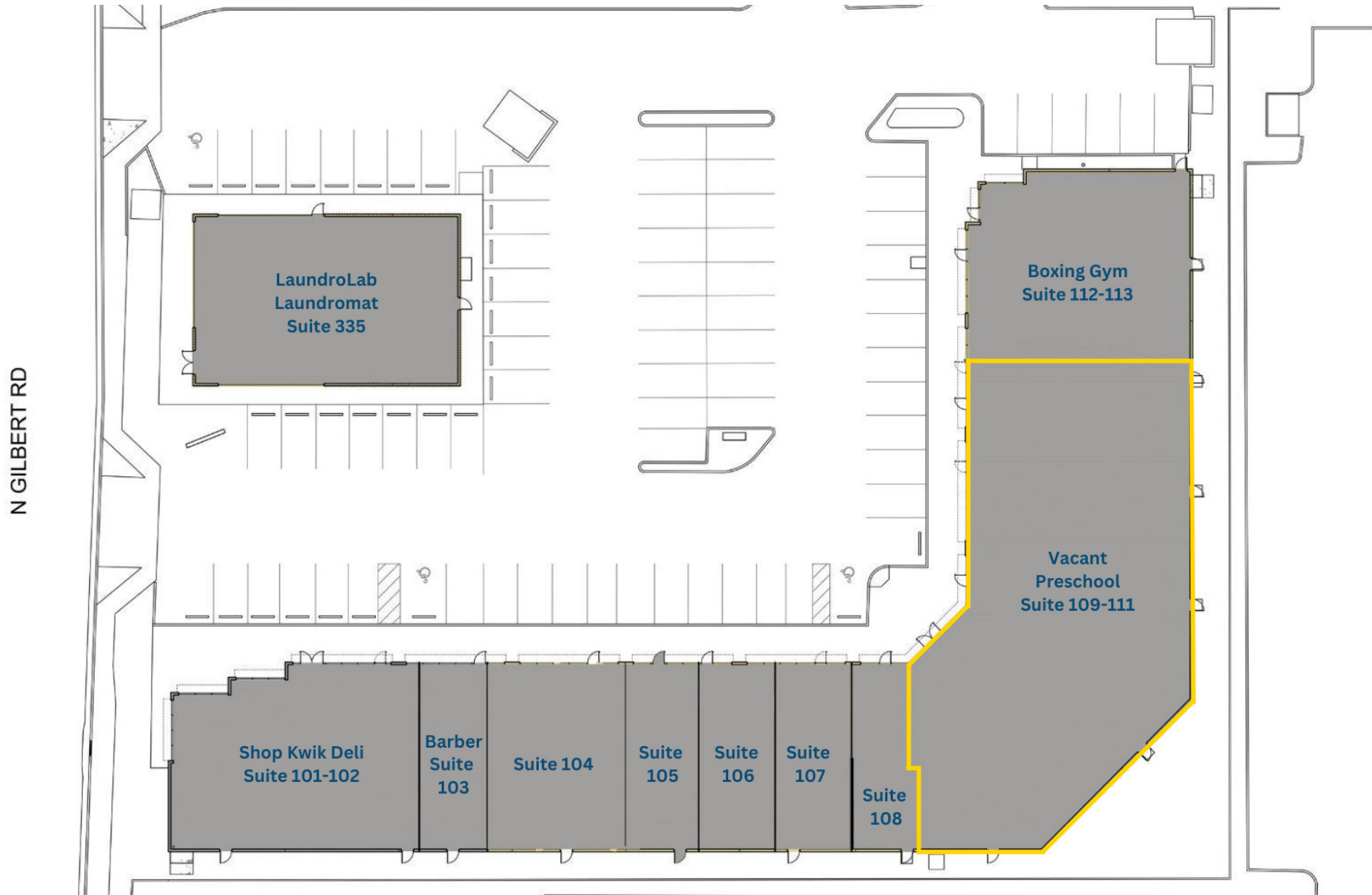
Floor Plan



Childcare Center Available for Sublease

323 N Gilbert Rd, Ste 109-111, Mesa, AZ 85203

Site Plan



Childcare Center Available for Sublease

323 N Gilbert Rd, Ste 109-111, Mesa, AZ 85203

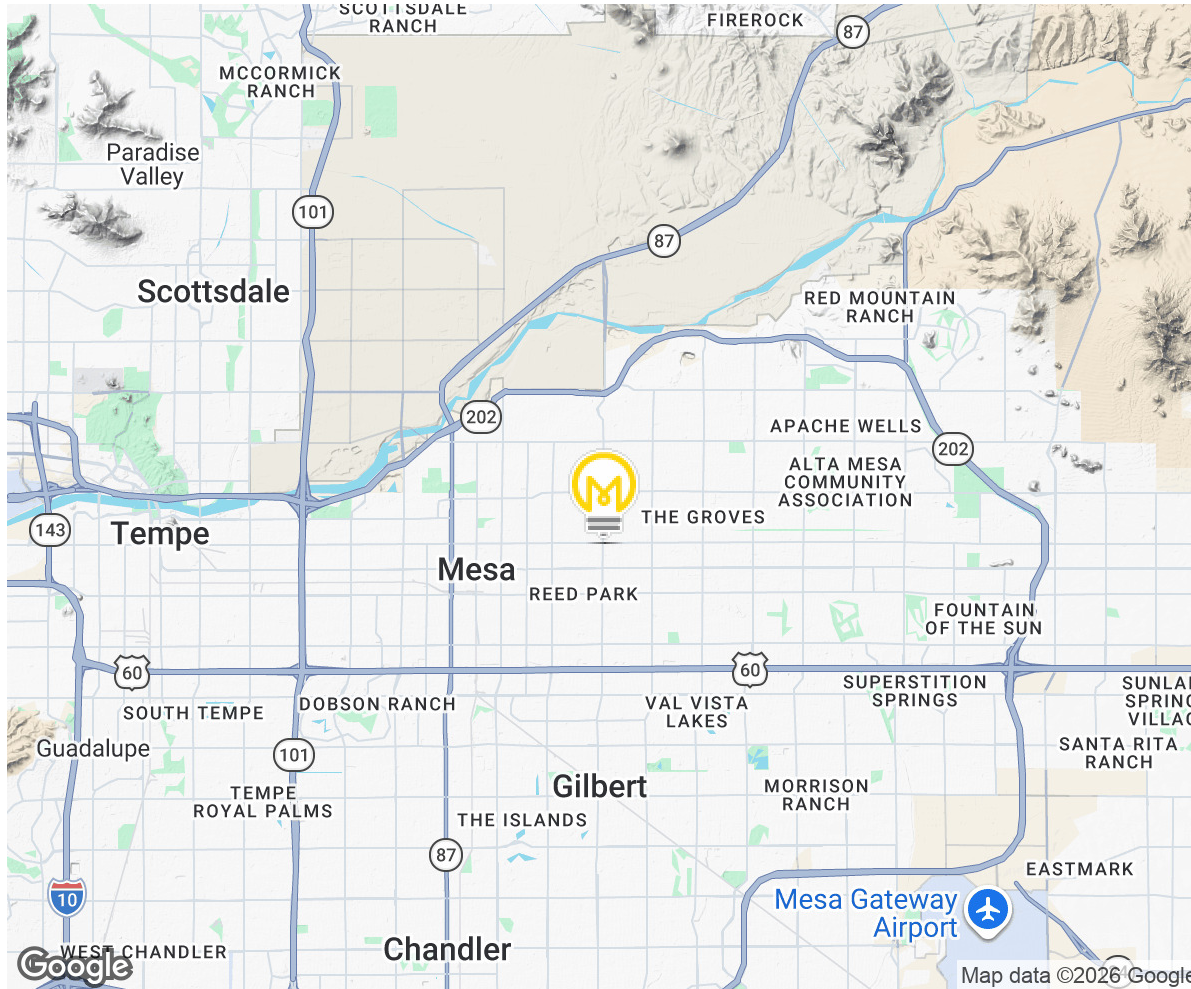
Retailer Map



Childcare Center Available for Sublease

323 N Gilbert Rd, Ste 109-111, Mesa, AZ 85203

Site Details



DEMOGRAPHICS	1 Mile	3 Miles	5 Miles
Total Households:	8,081	59,511	128,404
Total Population:	22,254	163,018	335,853
Average HH Income:	\$87,019	\$93,676	\$95,749