



CLARKSON MEDICAL & DENTAL CENTERS

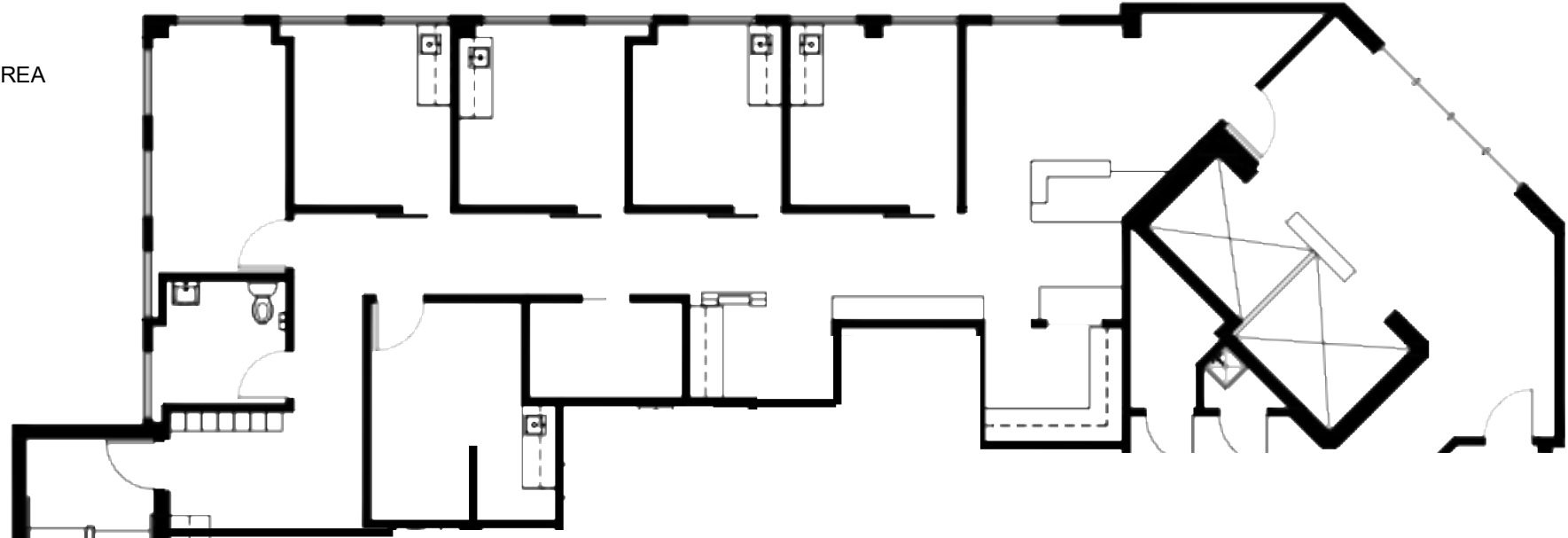
3601 & 3701 S. CLARKSON STREET, ENGLEWOOD, CO 80113

SUITE 320

1,701 SQFT

SUITE 320

- LOCATED ON THE 3RD FLOOR OF THE 3701 BUILDING
- FULL BUILD OUT WITH EXISTING A LEVEL FINISHES, RECONFIGURATIONS AVAILABLE
- 5 EXAM ROOMS, DOCTOR'S OFFICE, STORAGE, MA STATION, RECEPTION, BACK OFFICE, AND WAITING AREA
- 6: 1,000 PARKING RATIO
- RESERVED PARKING SPOTS AVAILABLE
- FEATURES LOTS OF NATURAL LIGHT
- ON-SITE PROPERTY MANAGEMENT
- NEW BUILDING OWNERSHIP AND MANAGEMENT



FOR MORE INFORMATION PLEASE CALL

303-781-9930