



## 106 Pinner Road

Northwood, HA6 1BS

### Freehold Tyre Workshop & Warehouse - For Sale

**2,481 sq ft**

(230.49 sq m)

- Rarely available tyre workshop & separate fitted garage.
- Existing business trading for a number of years.
- Tyre store to front.
- Separate rear warehouse with ramps & turning circle.
- Excellent location.

# 106 Pinner Road, Northwood, HA6 1BS

## Summary

Available Size	2,481 sq ft
Price	Offers in the region of £850,000
Business Rates	Upon Enquiry
EPC Rating	Upon enquiry

## Description

The property comprises a freehold tyre workshop and a rear warehouse situated in a prominent position in Northwood. Northolt Tyres have traded from the site successfully for a number of years and have converted the ground-floor retail unit and first-floor former residential accommodation into a tyre store. There is a separate rear warehouse with ramps accessed via the service road which is included within the sale.

## Location

The building fronts Pinner Road a main road linking Rickmansworth to Northwood and Pinner. The nearest Station is Northwood Hills Underground Station is 0.4 miles from the property. By road, the building is 7 miles from the M25 and 18 miles from central London.

## Accommodation

The accommodation comprises the following areas (NIA):

Name	sq ft	sq m	Availability
Ground	645.75	59.99	Available
1st	509.95	47.38	Available
Unit - Rear Warehouse	1,106.57	102.80	Available
<b>Total</b>	<b>2,262.27</b>	<b>210.17</b>	



## Viewing & Further Information



**George Moriarty**

020 8429 9003 | 07522 700 507

george@davidcharles.co.uk



**Finlay Milnes**

020 8429 9009 | 07522 700 508

finlay@davidcharles.co.uk

The above information contained within this email is sent subject to contract. These particulars are for general information only and do not constitute any part of an offer or contract. All statements contained therein are made without responsibility on the part of the vendors or lessors and are not to be relied upon as statement or representation of fact. Intending purchasers or lessees must satisfy themselves, by inspection, or otherwise, as to the correctness of each of the statements of dimensions contained in these particulars. Generated on 13/06/2025

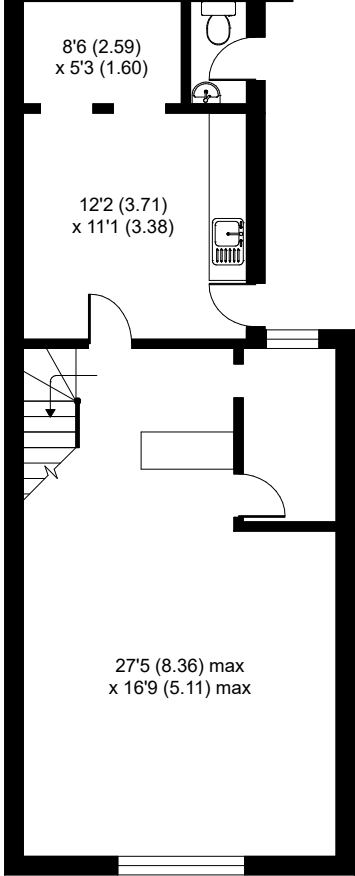
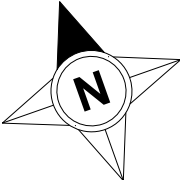
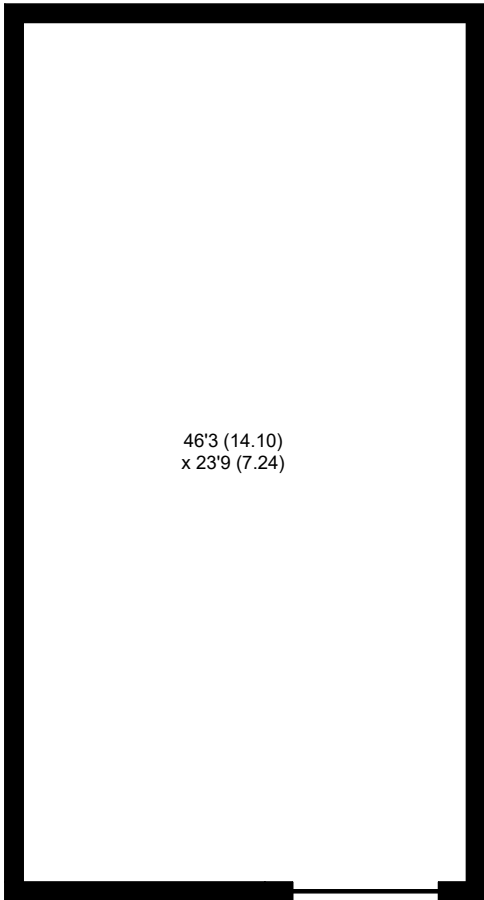




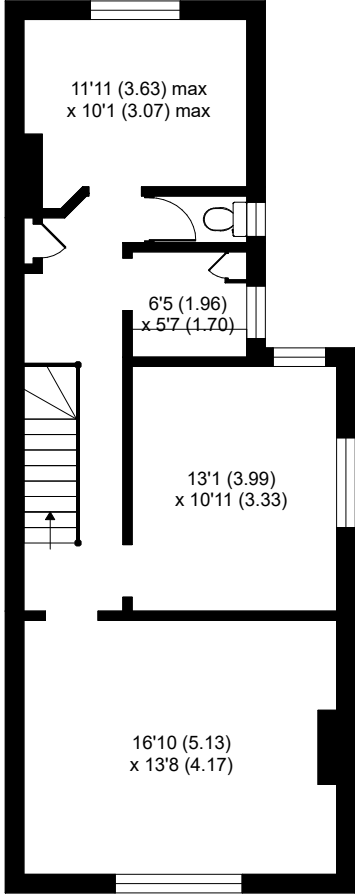
# Pinner Road, Northwood, HA6

Approximate Area = 2481 sq ft / 230.4 sq m

For identification only - Not to scale



GROUND FLOOR



FIRST FLOOR