

**TERMINAL 1 -
PORT OF VANCOUVER**
VANCOUVER, WASHINGTON

**4 RETAIL SPACES
AVAILABLE**

LINCOLN
PROPERTY
COMPANY



BUILDING OVERVIEW

Available together or individually, the Terminal 1 building features four retail spaces that will be delivered in Q3 of 2024. The building is currently 100% leased to ZoomInfo Technologies (ZI) as their World Headquarters, which will create 2,500 to 3,000 new jobs. Just steps away, the building is part of Terminal 1, a mixed-use development that includes:

- The newly completed AC Marriott, featuring 150 guest rooms, 4,000 square feet of meeting space, and a riverside bar.
- The proposed Terminal 1 Public Market, which will encompass 40,000 square feet of retail and restaurants.
- A riverside amphitheater that will host events and concerts.
- A public boat dock that will provide locals with opportunities for boating, kayaking, paddleboarding, and swimming.



AVAILABLE SUITES:

Space 102 - 1,600 RSF

Space 106 - 4,250 RSF

Space 104 - 2,480 RSF

Space 108 - 3,530 RSF



BUILDING FEATURES

- » Complete Perimeter Storefront
- » Exposed Concrete Ceilings*
- » 14'+ Clear Ceiling Height
- » Slab to be Provided by Tenant
- » 2 Points Of Entry
- » Exterior Canopies
- » Exterior Seating Potential
- » Gas Stub-In
- » Cold Water Stub-In
- » 4" Grease Waste Line
- » Power & Data Stub-In
- » Lighting to be Provided by Tenant
- » HVAC to be Provided by Tenant

*Some portions of ceiling may not be exposed



BUILDING SNAPSHOT

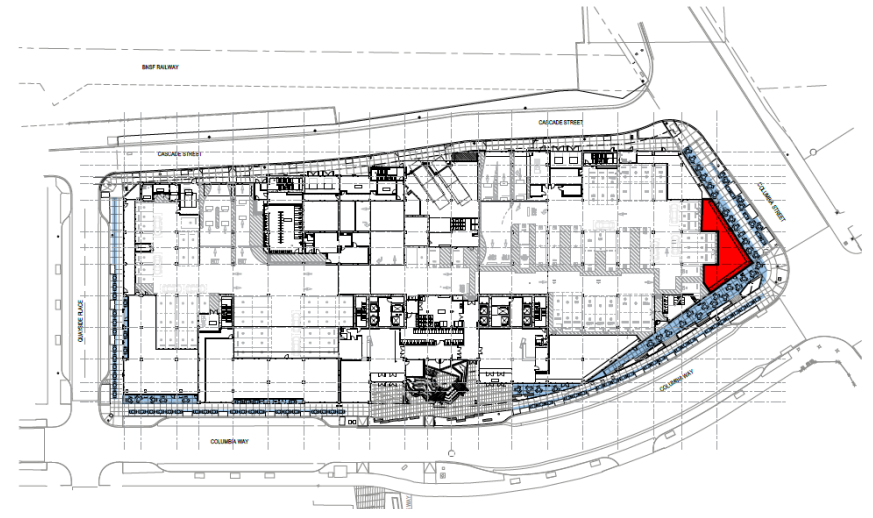


AVAILABLE SUITES

RETAIL SPACE 102

 **SIZE:** 1,600 SF

 **FRONTAGE:** Columbia Way & Columbia Way

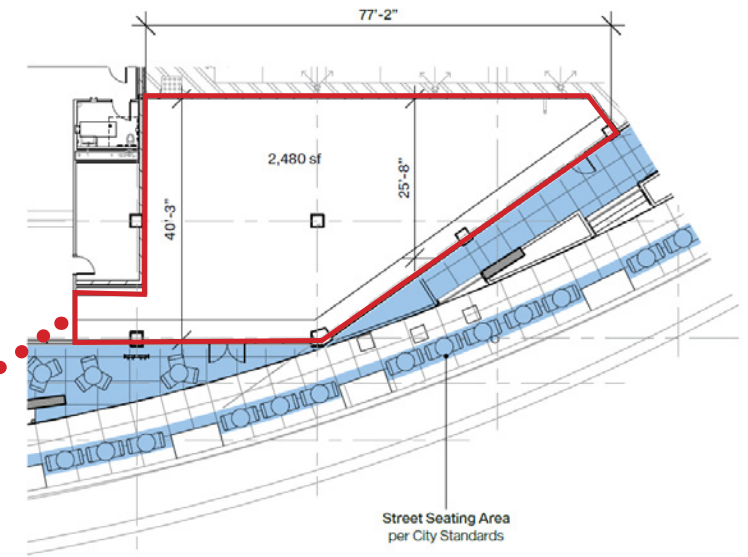
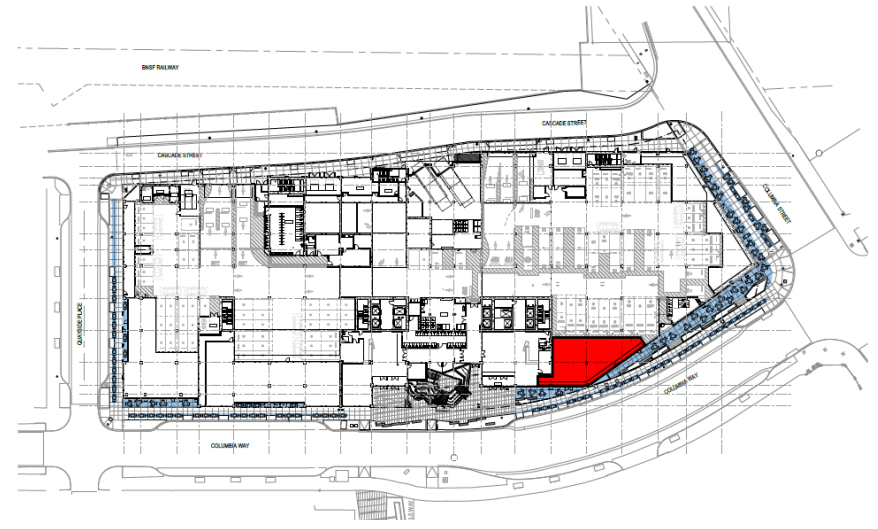


AVAILABLE SUITES

RETAIL SPACE 104

 **SIZE:** 2,480 SF

 **FRONTAGE:** Columbia Way & Daniel's Way Path



AVAILABLE SUITES

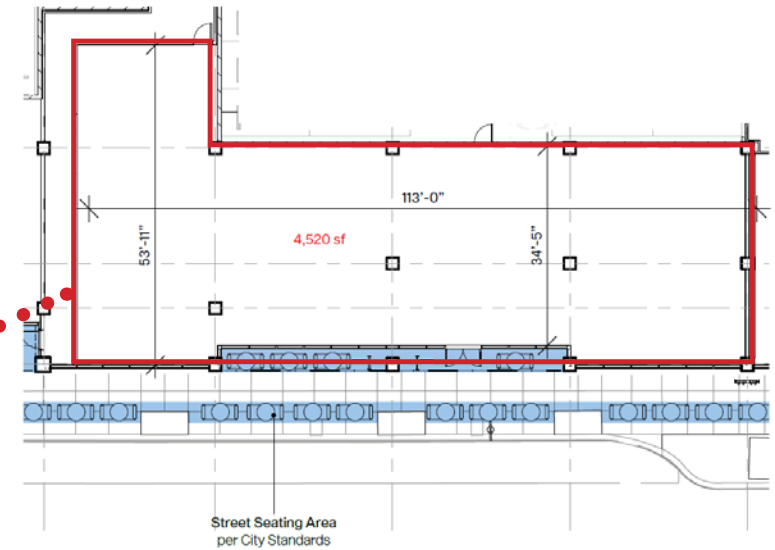
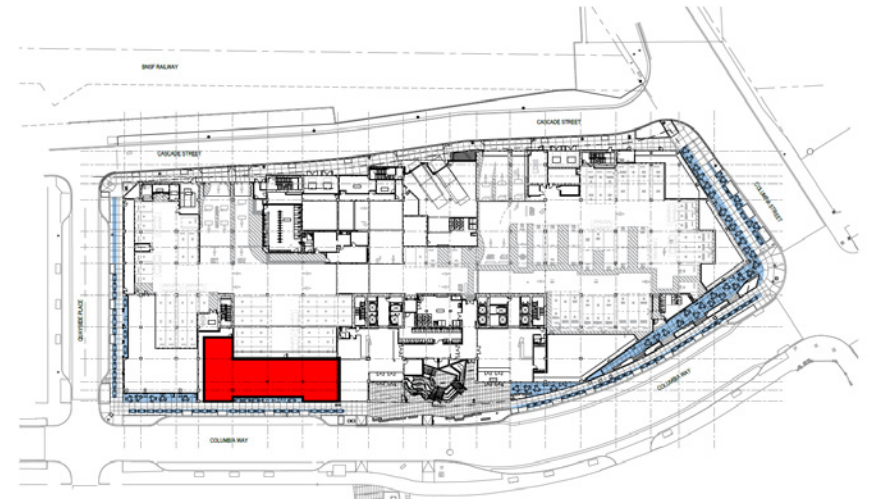
RETAIL SPACE 106



SIZE: 4,520 SF



FRONTAGE: Columbia Way & Daniel's Way Path

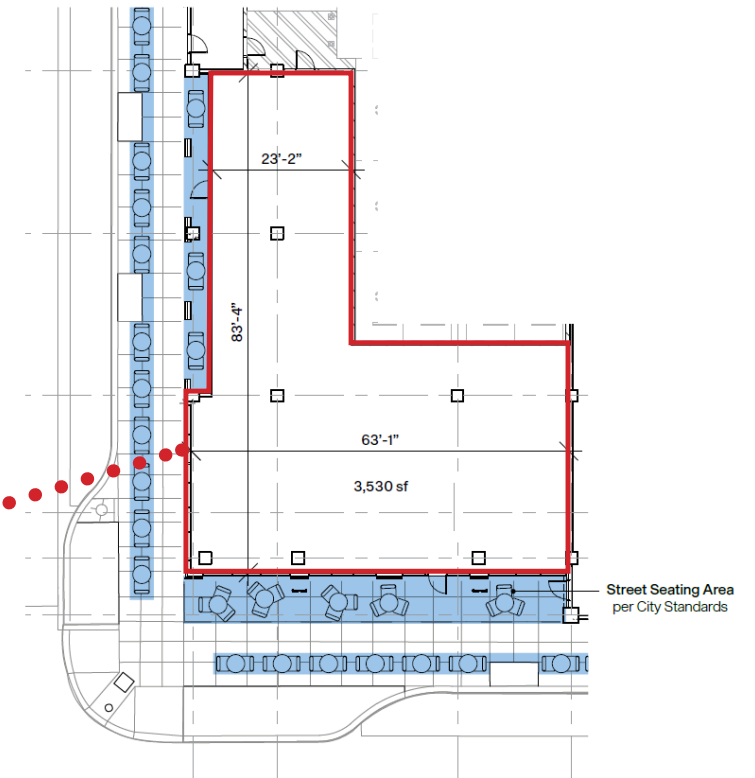
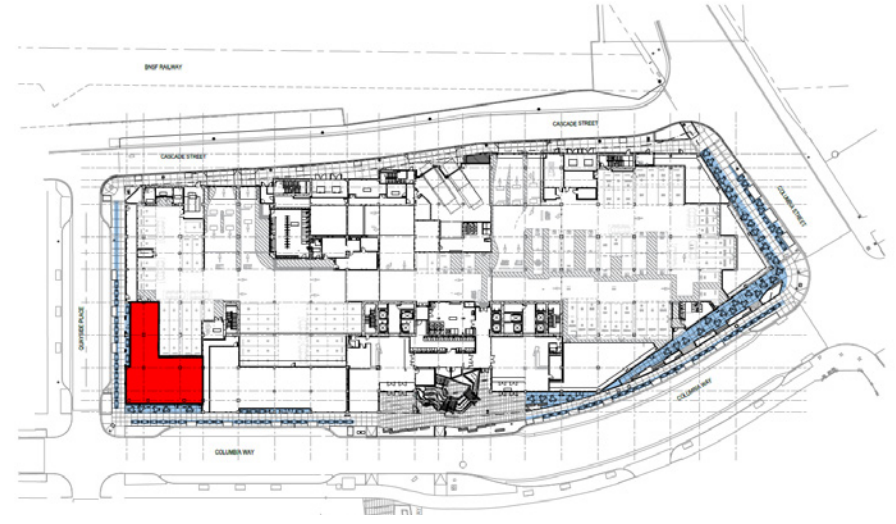


AVAILABLE SUITES

RETAIL SPACE 108

 **SIZE:** 3,530 SF

 **FRONTAGE:** Columbia Way & Quayside Place

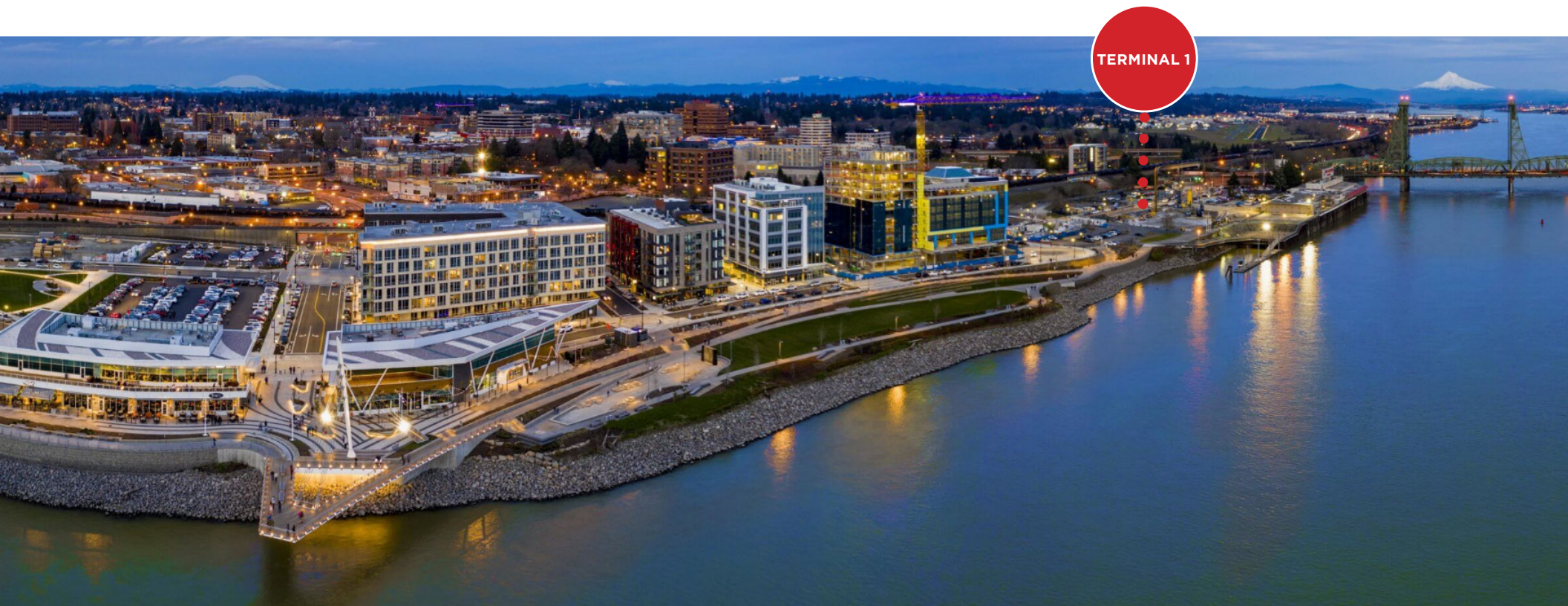
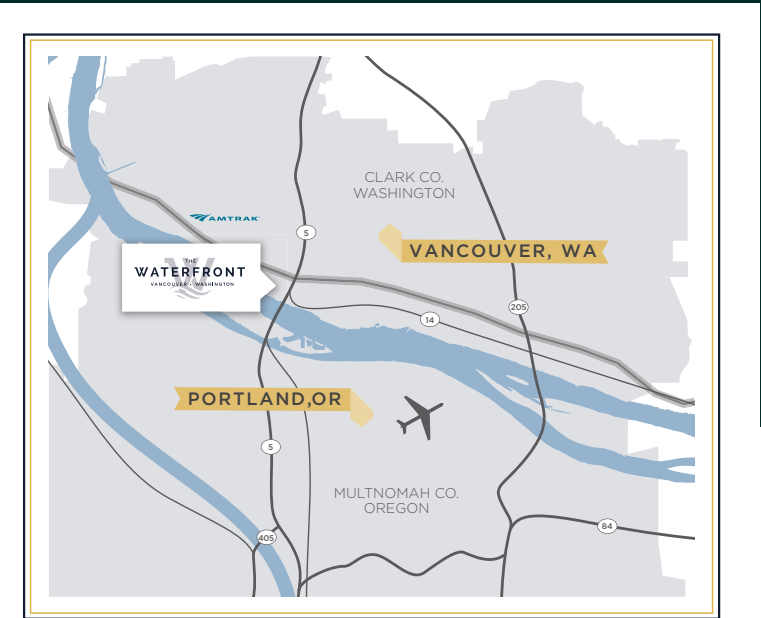


THE WATERFRONT

VANCOUVER, WASHINGTON

The Waterfront is a 20-block, 32-acre riverfront development with unparalleled views of the Columbia River. The development connects downtown Vancouver, exclusively Terminal 1, to the waterfront with a 5-minute walk.

Situated in a highly-desirable location, The Waterfront has become part of Vancouver's urban core and is transforming the immediate area into one of Washington's most dynamic live-work-play environments with intrinsic qualities to fuel its growth and momentum well into the foreseeable future. The State-of-the-art green spaces, including walking and biking trails, public parks, and natural habitats, make this an attractive place to visit and stay.



THE WATERFRONT

VANCOUVER • WASHINGTON

DOWNTOWN VANCOUVER

DOWNTOWN PORTLAND



MODERA VANCOUVER
(BLOCK 21)
Mill Creek Residential
14-story, 285 apartments,
underground parking
Construction to start Spring 2023

BLOCK 19
Alliance Residential
7-story, 180 apartments,
underground parking
Anticipated to open 2024

BROADSTONE CLARO
(BLOCK 17)
Alliance Residential Company
7-story, 178 unit
apartment building
Anticipated to open Dec. 2022

RIVERWEST (BLOCK 8)
HSP Properties
• Airfield Estates
• Charles Schwab
• Orangetheory Fitness
• People's Community
• Federal Credit Union
206 Apartments over Retail

REDIVIVA (BLOCK 6 WEST)
Gramor Development
• Barnard Griffin Winery
• Brian Carter Cellars
• Pepper Bridge Winery &
Amavi Cellars
• Stack 571 Burger &
Whiskey Bar
• Valo & Massalto
63 Apartments over Retail

THE COLUMBIA AT THE WATERFRONT
(BLOCK 20)
Jackson Square Properties
248 apartments

BLOCK 15
Interior Park

BLOCK 7
Proposed 830-space, 8-story
parking garage and 11,200 SF of
ground floor retail
Anticipated to open 2024

THE MURDOCK (BLOCK 6 EAST)
Gramor Development
• OnPoint CCU
• Ruse Brewing Crust Collective
• The Yard Milkshake Bar
Class A Office Over Retail

WATERFRONT PARK

THE SPRINGS LIVING AT THE WATERFRONT
(BLOCK 18)
Planned for 250 apartments
Anticipated to open 2024

THE DON (BLOCK 12)
Gramor Development
• Maryhill Winery
• Twigs Bistro & Martini Bar
• Waterfront Taphouse
• Willamette Valley Vineyards

BLOCK 3
Summit Development
High-Rise Residential
180 Apartment Units
Anticipated to open 2023

HOTEL INDIGO & KIRKLAND TOWER (BLOCK 4)
Kirkland Development
• 13 Coins
• El Gaucho
• Evoke Winery
138 Room Hotel Indigo and
40 Unit Condominium Building

- PHASE 3 - PLANNED
- PHASE 1 & 2 - OPEN/UNDER CONSTRUCTION
- AVAILABLE FOR SALE

THE JEAN (BLOCK 9)
Gramor Development
• DosAlas Latin Kitchen & Tequila Bar
• WildFin American Grill

GRANT STREET PIER
Cable-Stayed Pier

WATERFRONT PARK
Headwaters Wall Water Feature

BLOCK 1 & 2
Lincoln Property Company
Proposed mixed-use
24,500 SF retail/restaurant,
171,000 SF office, 200 apartments
Anticipated to open 2024

TERMINAL 1
Port of Vancouver
Zoom Info expansion into
366,000 sf to occupy by 2024
Vancouver Landing

AC HOTEL BY MARRIOTT
Port of Vancouver
150 Rooms

TERMINAL 1 - PORT OF VANCOUVER 4 RETAIL SPACES AVAILABLE

VANCOUVER, WASHINGTON

LINCOLN
PROPERTY
COMPANY

WWW.LPC.COM

FOR ADDITIONAL INFORMATION,
PLEASE CONTACT:

LEE MORRISON
SENIOR VICE PRESIDENT

1211 SW Fifth Avenue
Suite 700

Portland, OR 97204

O. 503.224.1193 | M. 916.716.9534

LMorrison@LPC.com

