

2750 W. Brooks Ave

North Las Vegas, NV 89032

Industrial for Lease

1,945 – 1,946 SF



Leasing Information: 702.221.8226

Ali Roesener, SIOR
NRE:S.0172338
Senior Vice President
(702) 765-8894
Ali.Roesener@lpc.com

Tony Alvarez
NRE:S.0200369
Associate
(702) 765-8880
Tony.Alvarez@lpc.com

Lincoln

4755 Dean Martin Drive
Las Vegas, NV 89013

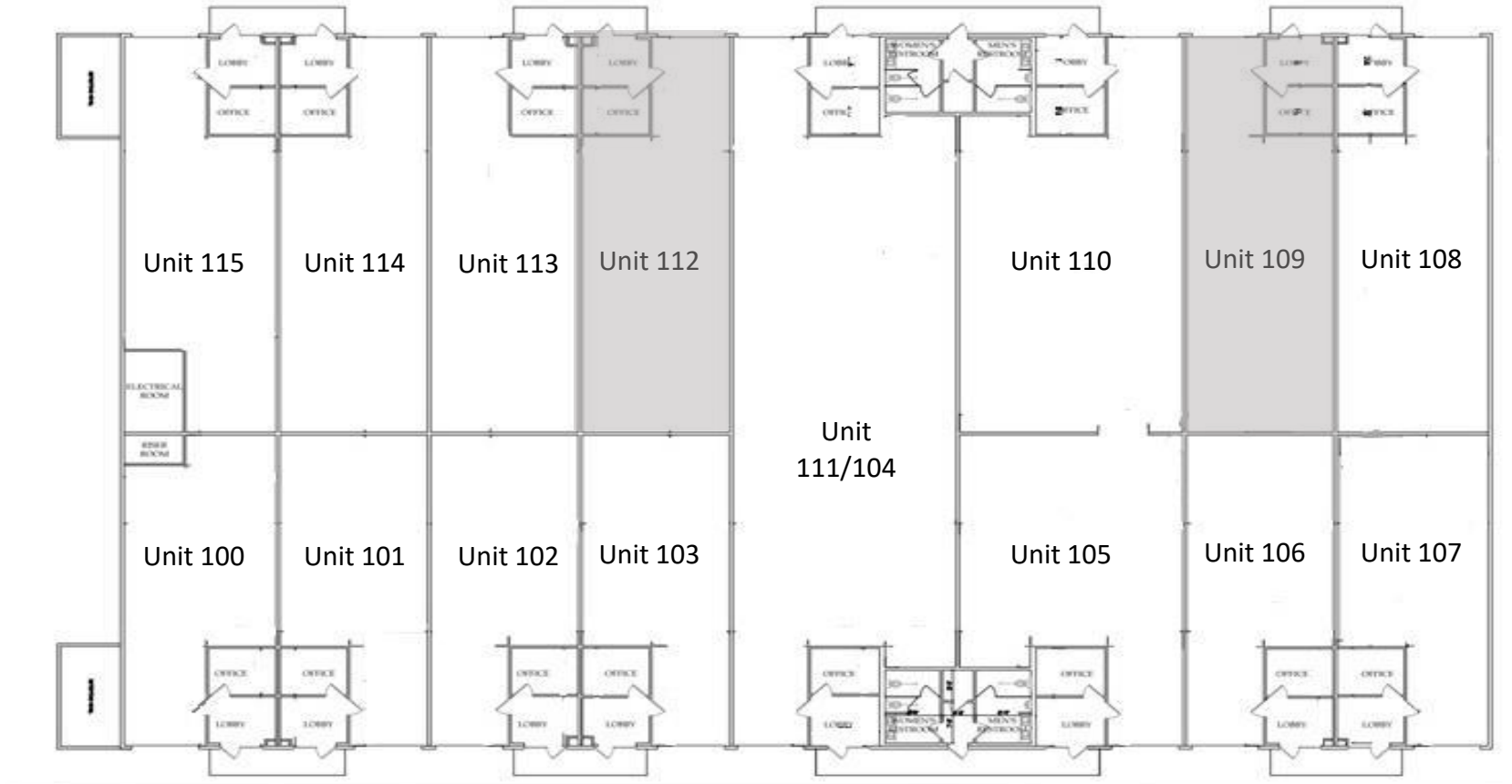
www.lpc.com

2750 W. Brooks Ave

North Las Vegas, NV 89032

Industrial for Lease

1,945 – 1,946 SF



Suite	Total SF	Office SF	Warehouse SF	Grade	Rate	CAM	Monthly Total
109	1,946	213	1,733	1	\$1.15	\$0.31	\$2,841.16
112	1,945	213	1,732	1	\$1.15	\$0.31	\$2,839.70

Ali Roesener, SIOR
 (702) 765-8894
 Ali.Roesener@lpc.com

Tony Alvarez
 (702) 765-8880
 Tony.Alvarez@lpc.com

Lincoln

2750 W. Brooks Ave

North Las Vegas, NV 89032

Industrial for Lease

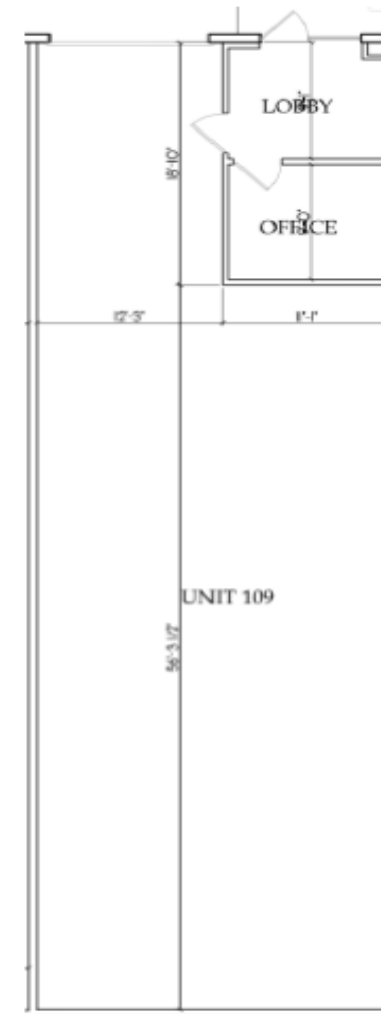
1,945 – 1,946 SF

SUITE 109

- 1,946 SF
- +/- 213 SF Office
- +/- 1,733 SF Warehouse
- 1 Grade Door 10' x 12'

LEASING TERMS

- \$1.15 PSF Monthly NNN
- 5% Annual Increases
- \$0.31 PSF Monthly Operating Expenses



Ali Roesener, SIOR
(702) 765-8894
Ali.Roesener@lpc.com

Tony Alvarez
(702) 765-8880
Tony.Alvarez@lpc.com

Lincoln

2750 W. Brooks Ave

North Las Vegas, NV 89032

Industrial for Lease

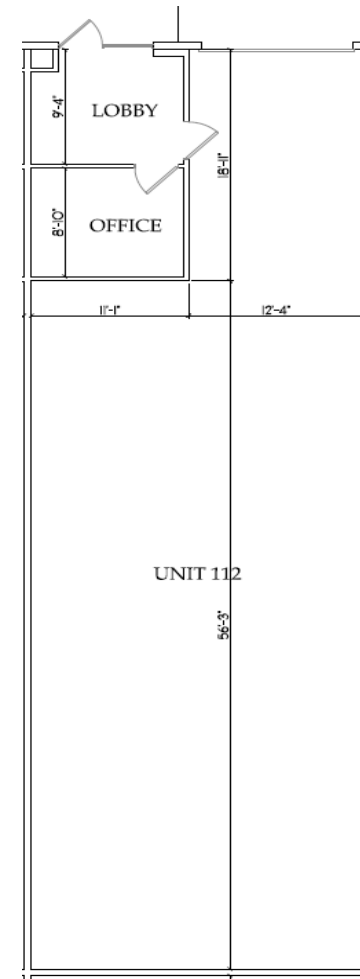
1,945 – 1,946 SF

SUITE 112

- 1,945 SF
- +/- 213 SF Office
- +/- 1,732 SF Warehouse
- 1 Grade Door 10' x 12'

LEASING TERMS

- \$1.15 PSF Monthly NNN
- 5% Annual Increases
- \$0.31 PSF Monthly Operating Expenses



Ali Roesener, SIOR
(702) 765-8894
Ali.Roesener@lpc.com

Tony Alvarez
(702) 765-8880
Tony.Alvarez@lpc.com

Lincoln