

RETAIL PROPERTY // FOR LEASE

2,600 SF RETAIL UNIT FOR LEASE AT SOUTH ORCHARD PLAZA

23325 ORCHARD LAKE RD
FARMINGTON, MI 48336



- Immediate availability
- Active retail center
- New pylon sign



P.A. COMMERCIAL
Corporate & Investment Real Estate

26555 Evergreen Road, Suite 1500
Southfield, MI 48076
248.358.0100
pacommercial.com

We obtained the information above from sources we believe to be reliable. However, we have not verified its accuracy and make no guarantee, warranty or representation about it. It is submitted subject to the possibility of errors, omissions, change of price, rental or other conditions, prior sale, lease or financing, or withdrawal without notice. We include projections, opinions, assumptions or estimates for example only, and they may not represent current, past or future performance of the property. You and your tax and legal advisors should conduct your own investigation of the property and transaction.

23303 - 23335 ORCHARD LAKE RD, FARMINGTON, MI 48336 // FOR LEASE

EXECUTIVE SUMMARY



Lease Rate	\$3,466.00 PER MONTH + UTILITIES (MG)
-------------------	----------------------------------------------

PROPERTY OVERVIEW

Neighborhood retail center with ten businesses. This space is available for immediate occupancy—new monument sign. Former Play-X-Scape suite.

OFFERING SUMMARY

Building Size:	17,700 SF
Available SF:	2,600 SF
Lot Size:	1.57 Acres
Year Built:	1986
Zoning:	C-2 Commercial
Market:	Detroit
Submarket:	Farmington/Farmington Hills

LOCATION OVERVIEW

Located on the west side of Orchard Lake Road between Grand River and Ten Mile Road.; conveniently located near I-696.

PROPERTY HIGHLIGHTS

- Immediate availability
- Active retail center
- New pylon sign

23303 - 23335 ORCHARD LAKE RD, FARMINGTON, MI 48336 // FOR LEASE

PROPERTY DETAILS

Lease Rate	\$16.00 PER PSF + UTILITIES (MG)
------------	----------------------------------

PROPERTY INFORMATION

Property Type	Strip Center
Property Subtype	Strip Center
Zoning	C-2 Commercial
Lot Size	1.57 Acres
APN #	23-27-276-032 01
Corner Property	Strip Center

PARKING & TRANSPORTATION

Parking Type	Surface
Number of Parking Spaces	98

LOCATION INFORMATION

Building Name	South Orchard Plaza
Street Address	23325 Orchard Lake Rd
City, State, Zip	Farmington, MI 48336
County	Oakland
Market	Detroit
Sub-market	Farmington/Farmington Hills
Cross-Streets	Orchard Lake Rd & 10 Mile Rd

BUILDING INFORMATION

Building Size	17,700 SF
Occupancy %	90.0%
Tenancy	Multiple
Year Built	1986



P.A. COMMERCIAL
Corporate & Investment Real Estate

We obtained the information above from sources we believe to be reliable. However, we have not verified its accuracy and make no guarantee, warranty or representation about it. It is submitted subject to the possibility of errors, omissions, change of price, rental or other conditions, prior sale, lease or financing, or withdrawal without notice. We include projections, opinions, assumptions or estimates for example only, and they may not represent current, past or future performance of the property. You and your tax and legal advisors should conduct your own investigation of the property and transaction.

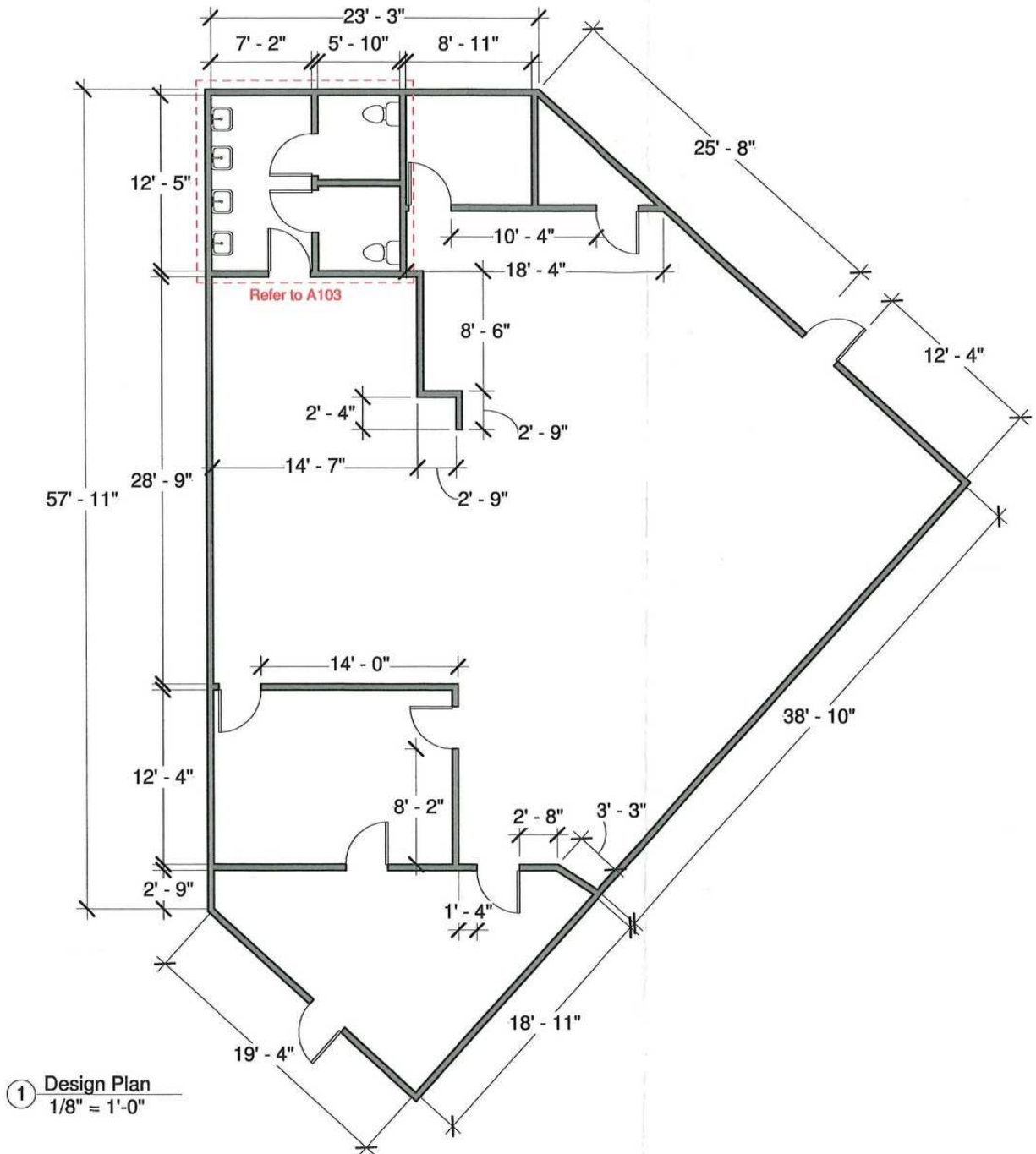
Dan Blugerman, CCIM SENIOR ASSOCIATE

D: 248.987.5418 | C: 248.987.5418

dan@pacommercial.com

23303 - 23335 ORCHARD LAKE RD, FARMINGTON, MI 48336 // FOR LEASE

FLOOR PLAN



23303 - 23335 ORCHARD LAKE RD, FARMINGTON, MI 48336 // FOR LEASE

SITE PLAN



We obtained the information above from sources we believe to be reliable. However, we have not verified its accuracy and make no guarantee, warranty or representation about it. It is submitted subject to the possibility of errors, omissions, change of price, rental or other conditions, prior sale, lease or financing, or withdrawal without notice. We include projections, opinions, assumptions or estimates for example only, and they may not represent current, past or future performance of the property. You and your tax and legal advisors should conduct your own investigation of the property and transaction.

23303 - 23335 ORCHARD LAKE RD, FARMINGTON, MI 48336 // FOR LEASE

RETAILER MAP

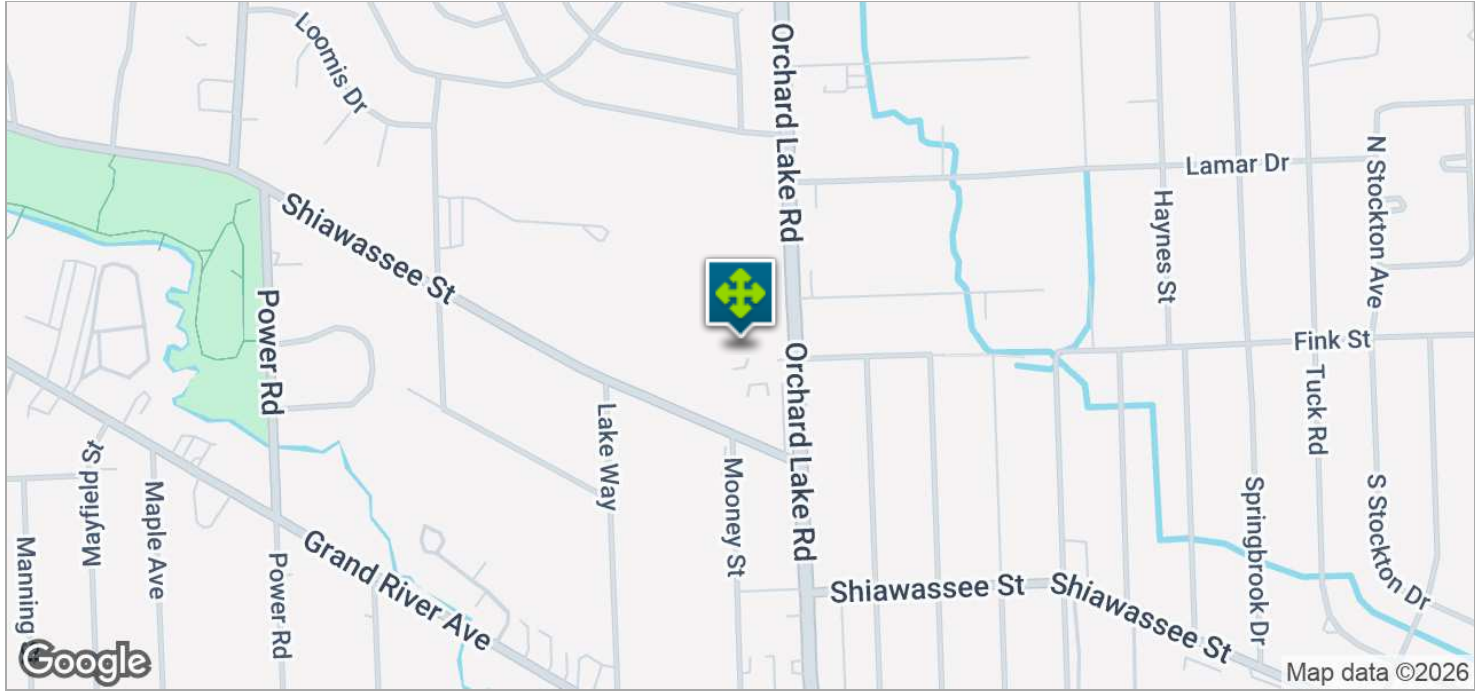


Map data ©2025 Imagery ©2025 Airbus, CNES / Airbus, Maxar Technologies

We obtained the information above from sources we believe to be reliable. However, we have not verified its accuracy and make no guarantee, warranty or representation about it. It is submitted subject to the possibility of errors, omissions, change of price, rental or other conditions, prior sale, lease or financing, or withdrawal without notice. We include projections, opinions, assumptions or estimates for example only, and they may not represent current, past or future performance of the property. You and your tax and legal advisors should conduct your own investigation of the property and transaction.

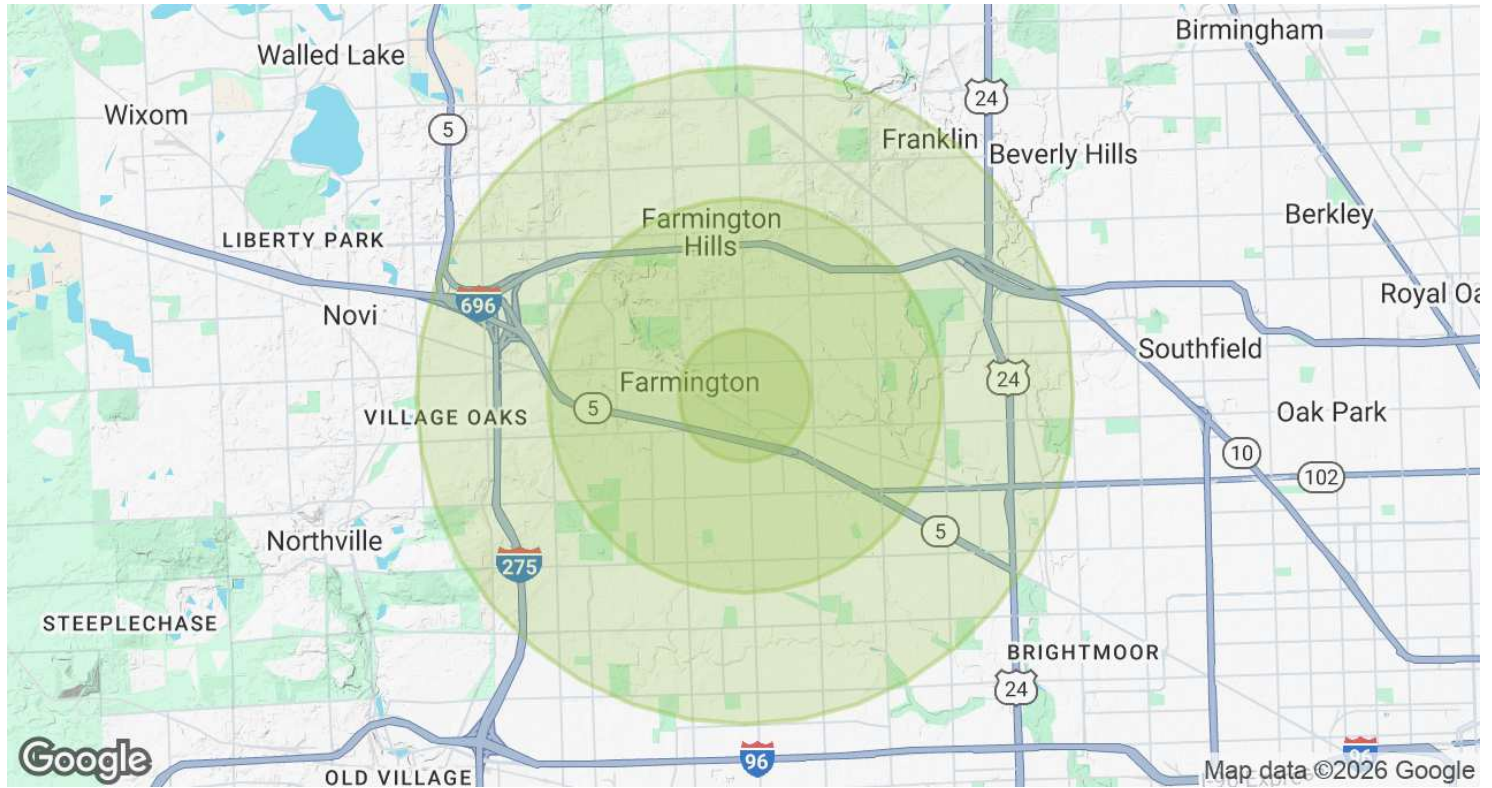
23303 - 23335 ORCHARD LAKE RD, FARMINGTON, MI 48336 // FOR LEASE

LOCATION MAPS



23303 - 23335 ORCHARD LAKE RD, FARMINGTON, MI 48336 // FOR LEASE

DEMOGRAPHICS MAP & REPORT



POPULATION	1 MILE	3 MILES	5 MILES
Total Population	8,892	78,374	207,360
Average Age	41.0	42.6	44.3
Average Age (Male)	37.6	40.4	42.1
Average Age (Female)	44.2	45.0	46.2
HOUSEHOLDS & INCOME	1 MILE	3 MILES	5 MILES
Total Households	4,140	35,662	93,597
# of Persons per HH	2.1	2.2	2.2
Average HH Income	\$84,619	\$90,272	\$91,870
Average House Value	\$190,323	\$191,690	\$196,872

2020 American Community Survey (ACS)



23303 - 23335 ORCHARD LAKE RD, FARMINGTON, MI 48336 // FOR LEASE

CONTACT US



FOR MORE INFORMATION, PLEASE CONTACT:



Dan Blugerman, CCIM
SENIOR ASSOCIATE

D: 248.987.5418
C: 248.987.5418
dan@pacommercial.com

P.A. Commercial
26555 Evergreen Road, Suite 1500
Southfield, MI 48076

P: 248.358.0100
F: 248.358.5300

pacommercial.com

Follow Us!



 **P.A. COMMERCIAL**
Corporate & Investment Real Estate
248-943-3305

We obtained the information above from sources we believe to be reliable. However, we have not verified its accuracy and make no guarantee, warranty or representation about it. It is submitted subject to the possibility of errors, omissions, change of price, rental or other conditions, prior sale, lease or financing, or withdrawal without notice. We include projections, opinions, assumptions or estimates for example only, and they may not represent current, past or future performance of the property. You and your tax and legal advisors should conduct your own investigation of the property and transaction.