

# Metroview Professional Building

Located on the Novant Health Presbyterian Medical Center campus with easy accessibility, strong referral networks, and proximity to a high-demand patient base, Metroview Professional offers an exceptional platform for growing practices in Charlotte's medical district.

Space for Lease  
1900 Randolph Road  
Charlotte, NC 28207



Total SF  
86,768 SF



Available SF  
1,176 - 4,643 SF



# Property Highlights



## Prime Medical Location

The property is within walking distance of Novant Health Orthopedic Hospital and Atrium Health Mercy, placing providers in the heart of a high-density medical hub.



## Collaborative Care

Within the Novant Health Presbyterian Medical Center campus, the facility connects via sky bridge to nearby medical offices with a diverse tenancy, supporting a strong referral network.



## Free Parking Available

A parking deck and an adjacent surface lot are available for both patients and providers at no cost, offering ample space for streamlined daily visits and improved accessibility.



## Strategic Connectivity

Positioned in the Midtown Medical District with easy access to Providence Road, I-277, and US-74, the campus connects physicians to high-income, growing patient bases in Charlotte.



## Enhanced Visibility

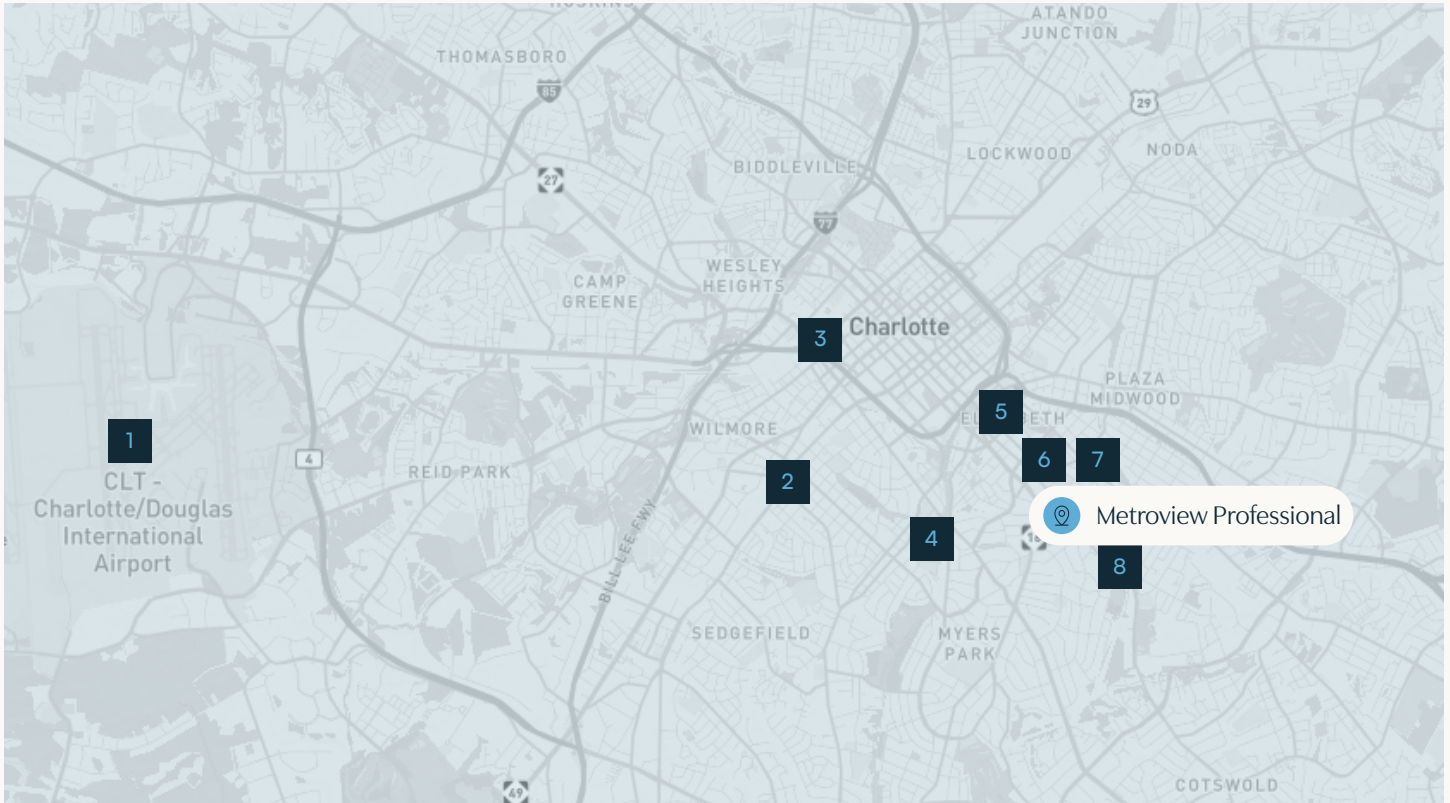
Available monument signage offers strong visibility in a prominent Charlotte setting, supporting brand recognition for physician practices.



## Premier Management

To ensure a safe, supportive, and efficient environment for daily operations, the property offers highly-responsive, on-site building management and security services.

# Points of Interest



**1** Charlotte Douglas Airport  
📍 8 miles

**2** Atherton Mill  
📍 3 miles

**3** Bank of America Stadium  
📍 3 miles

**4** Atrium Health Carolinas Medical  
📍 1 mile

**5** Independence Park  
📍 1 mile

**6** Novant Health Presbyterian Medical  
📍 0.3 miles

**7** Atrium Health Mercy  
📍 0.3 miles

**8** Eastover Medical Park  
📍 1 mile


Notable locations within a 10-minute walk

- Walgreens Pharmacy
- Burger King
- Domino's Pizza
- Viva Chicken
- Bojangles
- PNC Bank
- Papa John's Pizza
- Truist
- Rosemont Restaurant





# Demographics

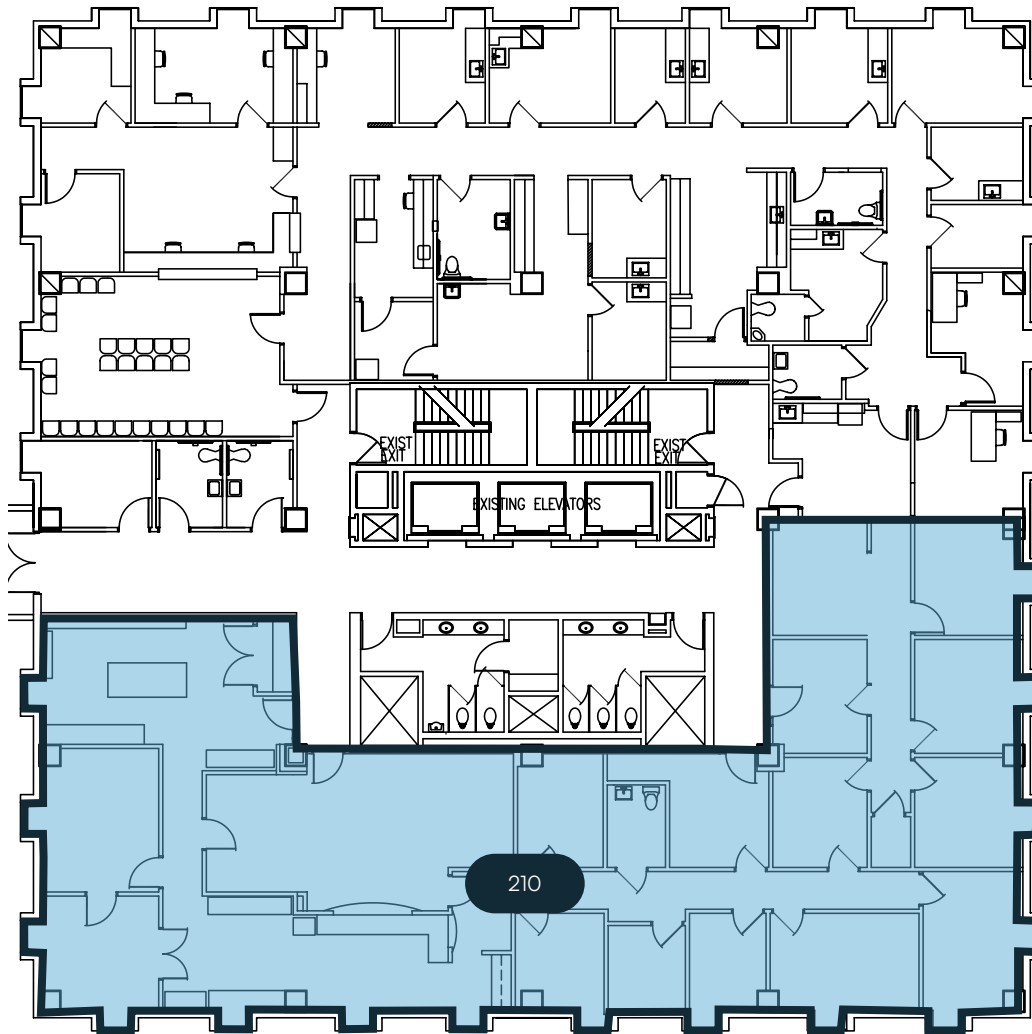


## 15 Minute Drive Time

-  Population  
323,177
-  Median Income  
\$82,130
-  Median Age  
34.6 years old
-  CAGR  
1.56%

## 25 Minute Drive Time

-  Population  
979,161
-  Median Income  
\$84,097
-  Median Age  
35.3 years old
-  CAGR  
1.54%



FLOOR PLAN

# Floor Two

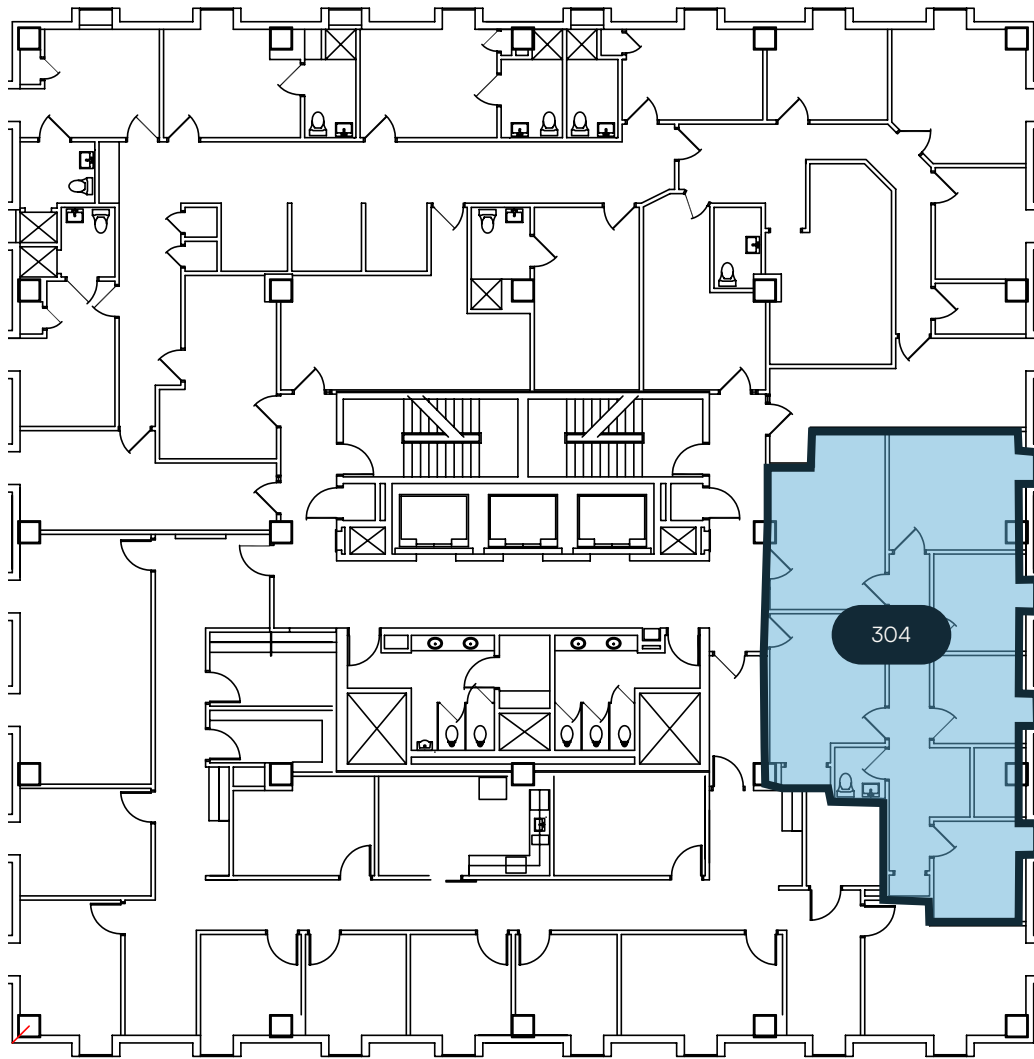
Suite 210



Size  
3,934 RSF



Availability  
Vacant



FLOOR PLAN

# Floor Three

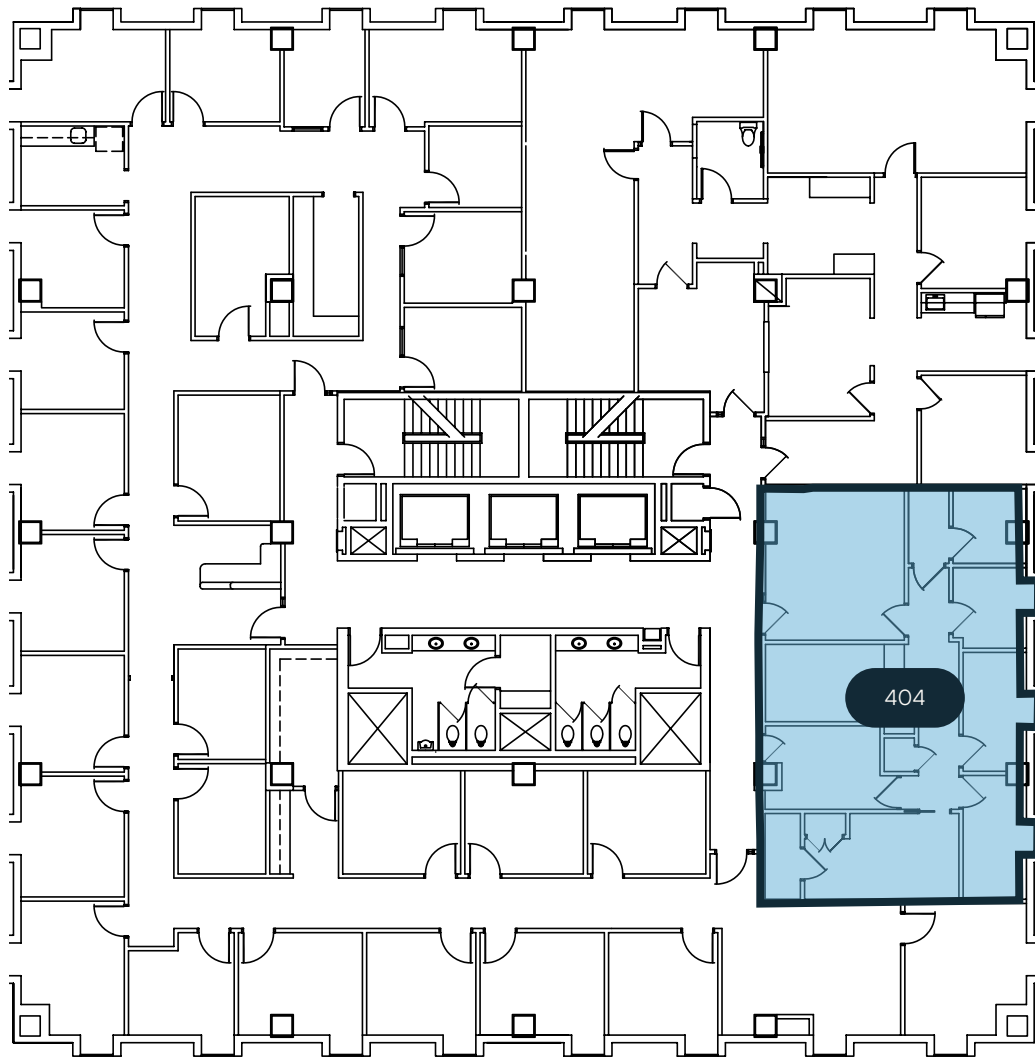
Suite 304



Size  
1,192 RSF



Availability  
Vacant



FLOOR PLAN

# Floor Four

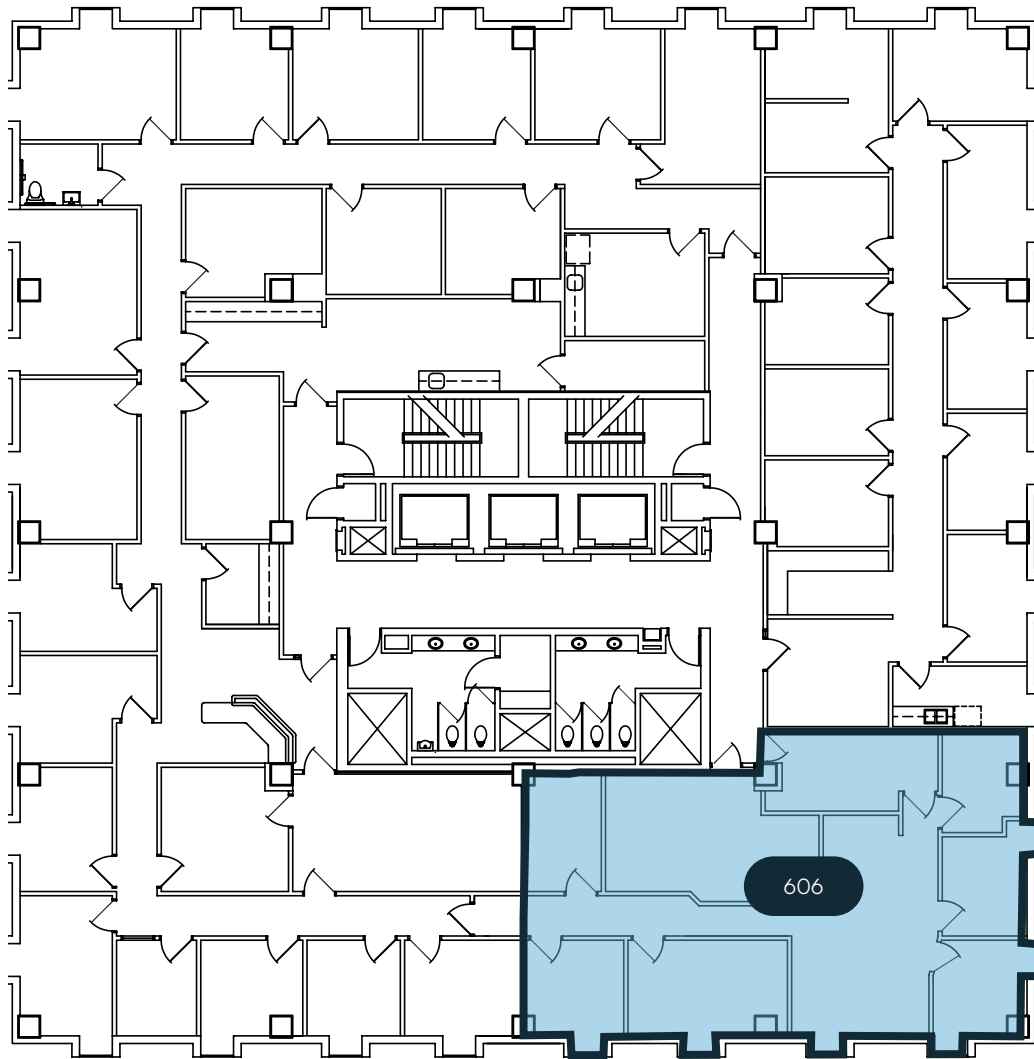
Suite 404



Size  
1,176 RSF



Availability  
Vacant



FLOOR PLAN

# Floor Six

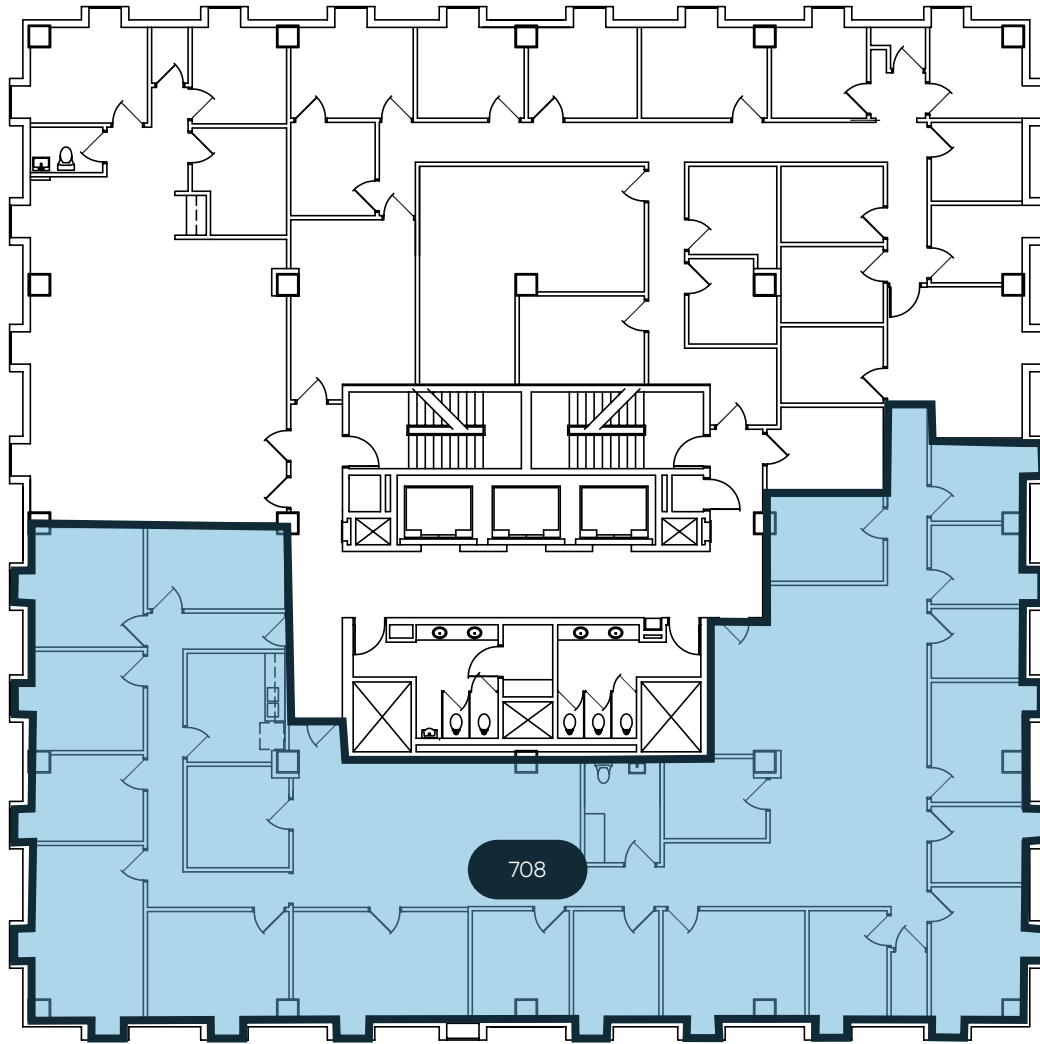
Suite 606



Size  
1,541 RSF



Availability  
Vacant



FLOOR PLAN

# Floor Seven

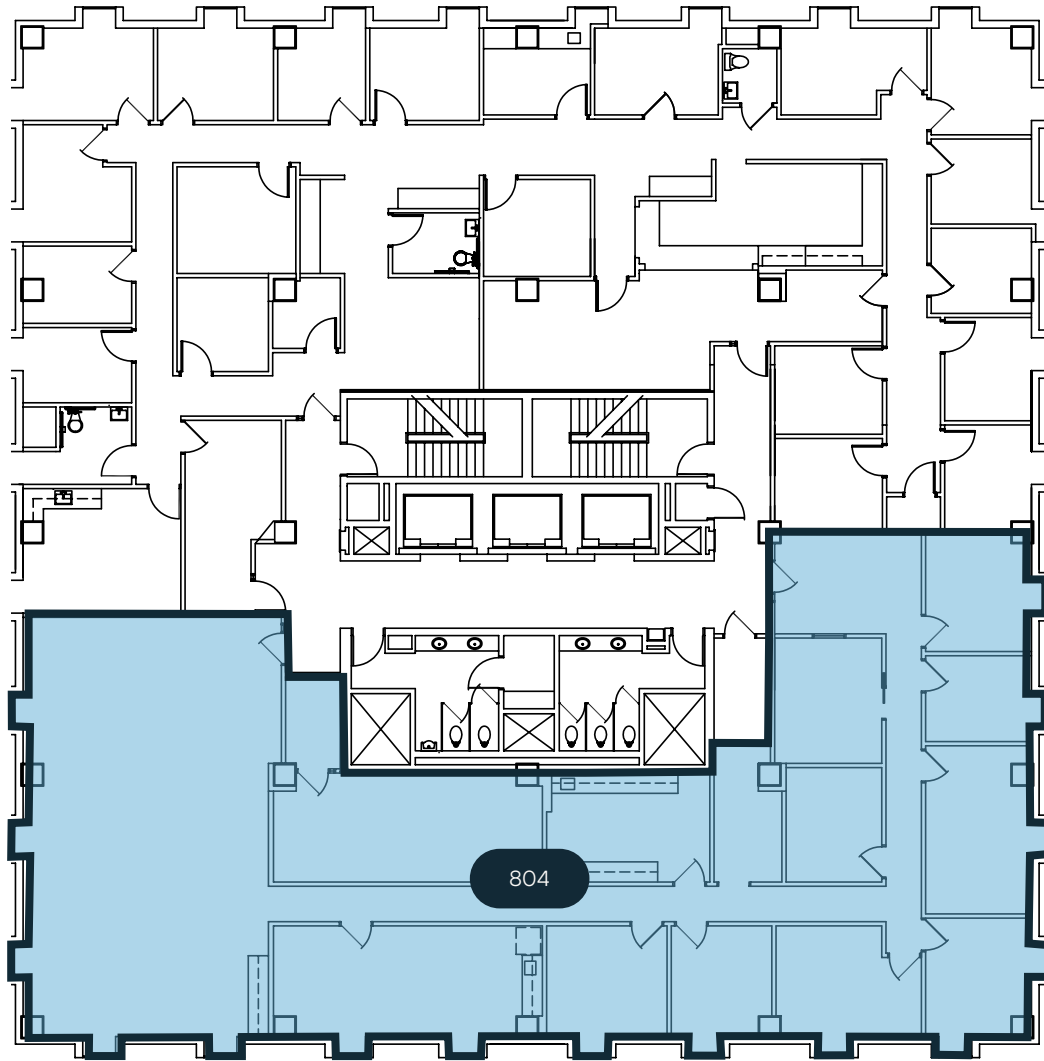
Suite 708



Size  
4,643 RSF



Availability  
Vacant



FLOOR PLAN

# Floor Eight

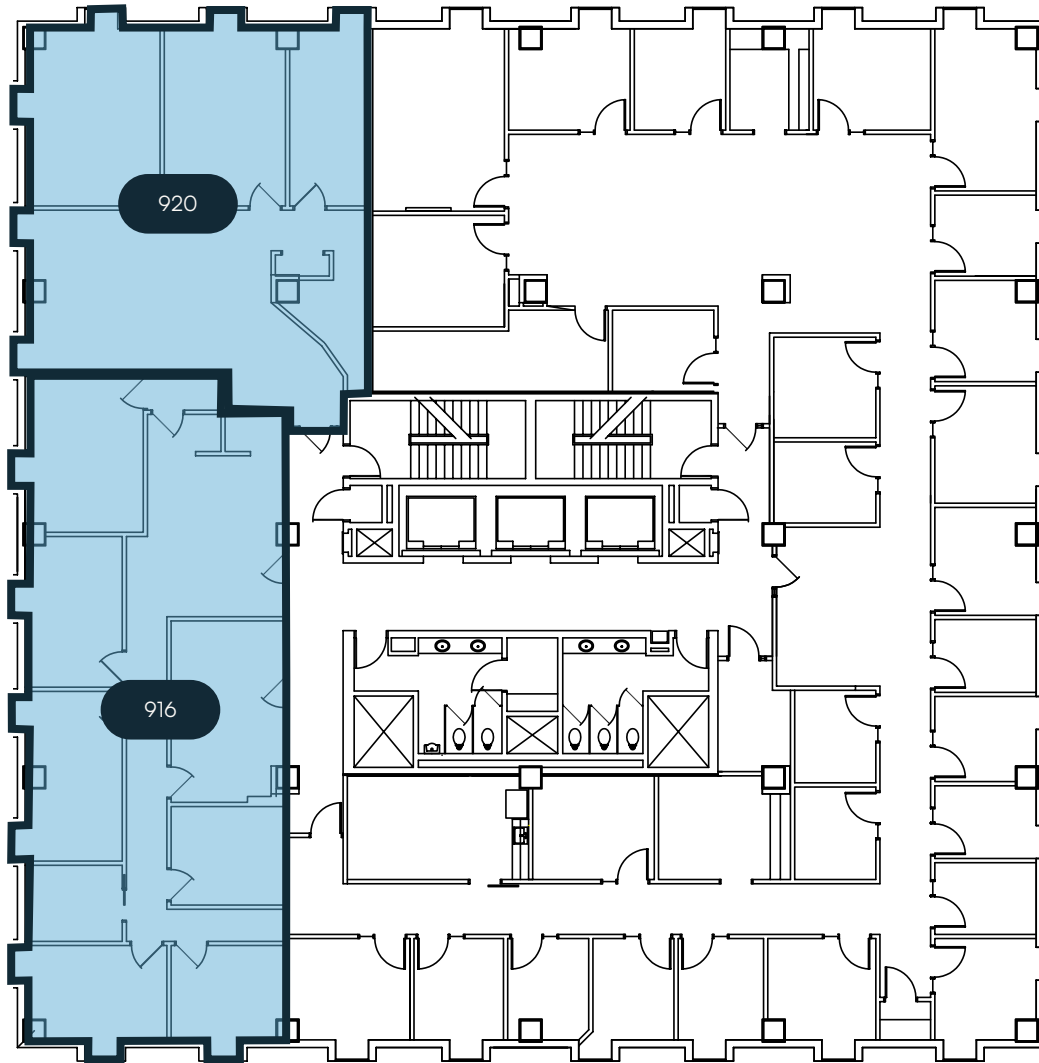
Suite 804



Size  
4,056 RSF



Availability  
Vacant



FLOOR PLAN

# Floor Nine

Suite 916



Size  
1,851 RSF



Availability  
Vacant

Suite 920

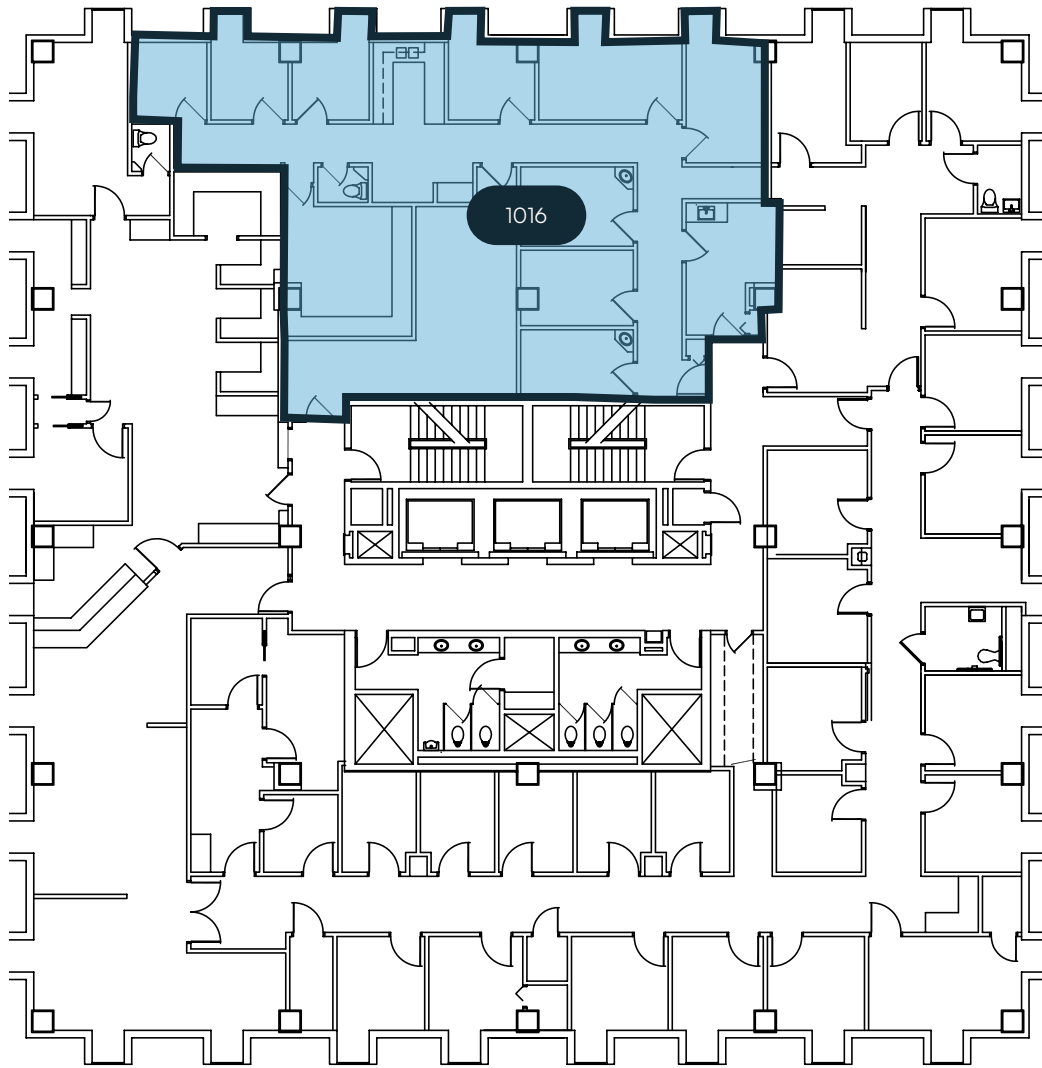


Size  
1,352 RSF



Availability  
Vacant

+ Suites 916 and 920 could be combined to offer 3,203 RSF



FLOOR PLAN

# Floor Ten

Suite 1016

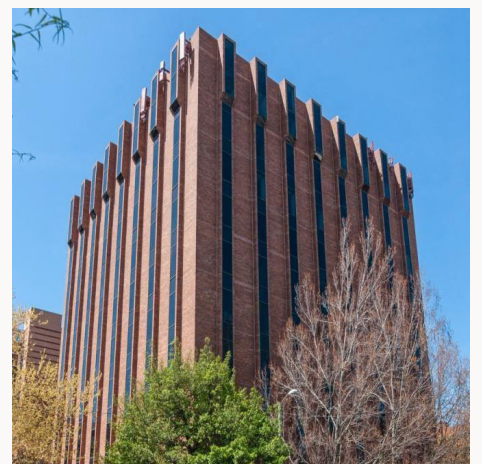


Size  
2,142 RSF

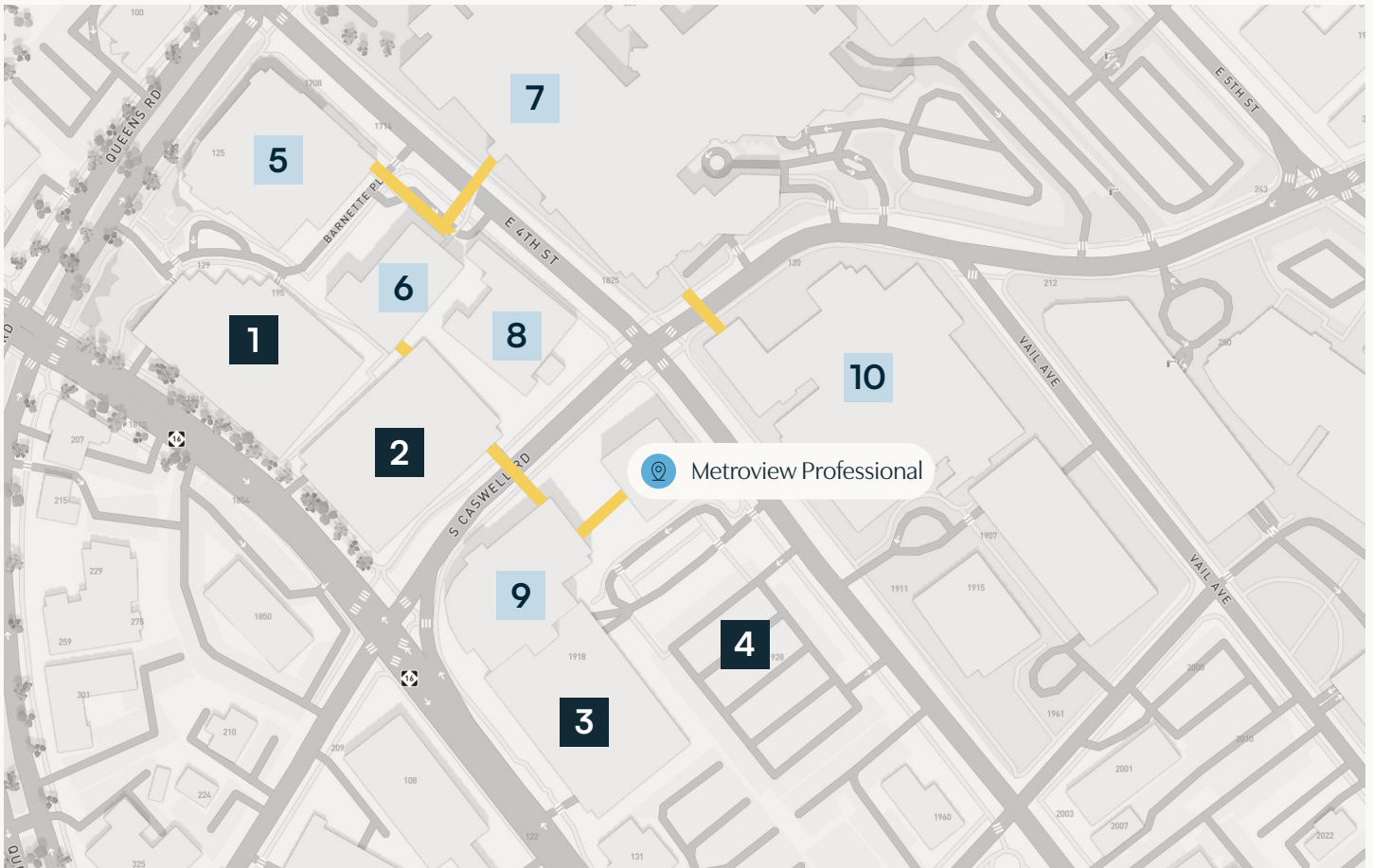


Availability  
Vacant

# Exterior



# Campus Map



## Key

 Sky Bridge Connector

## Campus Parking

- 1** Novant Heart & Vascular Connected Parking Deck
- 2** Presbyterian Medical Tower Connected Parking Deck
- 3** Midtown Medical Plaza Connected Parking Deck
- 4** Metroview Professional Building Surface Parking

- 5** Novant Heart & Vascular Institute
- 6** Presbyterian Medical Tower
- 7** Novant Health Presbyterian Medical Center
- 8** Novant Health Charlotte Outpatient Surgery Center
- 9** Midtown Medical Plaza
- 10** Novant Health Charlotte Orthopedic Hospital



# Metroview Professional Building

1900 Randolph Road  
Charlotte, NC 28207

---

Colin Stewart  
Director, Brokerage Services



Phone  
(704) 962-1387



Email  
[colin.stewart@meadowsandohly.com](mailto:colin.stewart@meadowsandohly.com)

Meadows & Ohly

Remedy   
Medical Properties, Inc.

MEADOWSANDOHLY.COM