



7741 26 Mile Rd.  
Washington, MI

## RETAIL SPACE FOR SUBLEASE

- Sublease Rate: \$20.00/SF NNN
- Available Space: 2,620 SF
- Lease Type: NNN
- Term: Sublease available through master lease ending September 15, 2028
- High-visibility shopping center location
- Excellent signage opportunities (with landlord approval)
- Recently updated 4-ton HVAC unit
- Ample parking for customers and staff
- Professional management on-site
- Strong local demographics and traffic counts
- Nearby Retail: McDonald's, Chili's Grill & Bar, Buffalo Wild Wings, Kohls, Meijer, T.J. Maxx, Kroger Marketplace, Marcus Grill, Bread & Roses



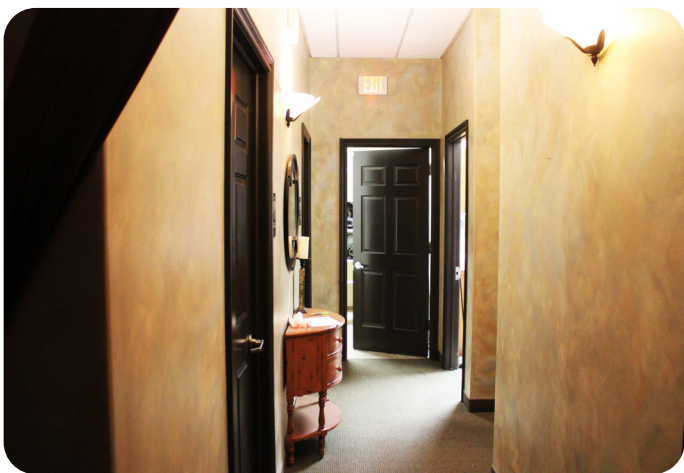
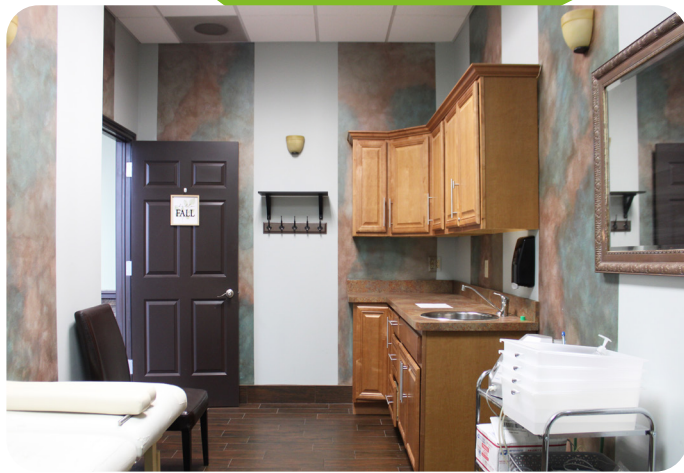
CONTACT US

248-710-8000

691 N. Squirrel Rd, Suite 290

Auburn Hills, MI 48326

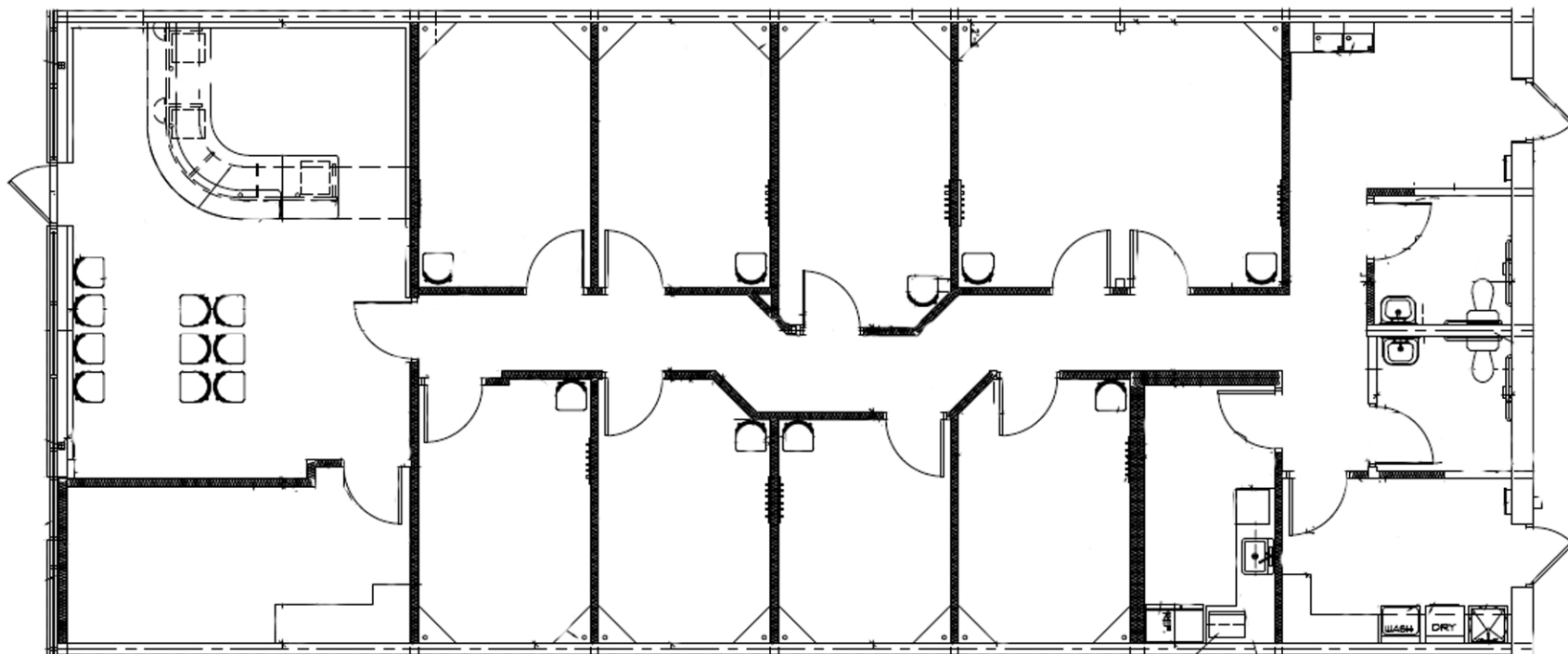
[www.team-core.com](http://www.team-core.com)



**Kevin N. Tamer**  
Vice President /  
Associate Broker  
734 - 624 - 3729  
knt@team-core.com



**Samuel A. McLean**  
Vice President  
248 - 935 - 7237  
sam@team-core.com



DO NOT SCALE



7741 26 Mile Road  
Washington, MI 48094

2,620 SF  
For More Information Please Call:  
248.710.8000

