

137 W. MAIN STREET  
MESA, AZ 85201

# ***DOWNTOWN MESA***



# Caliber Mesa Properties

- Caliber Properties
- Local Landmarks
- Upcoming Developments



Arizona Museum of Natural History

University & Mesa Development

ASU - Mesa City Center

I.D.E.A. Museum

Pioneer Park

18 W. Main

48 W. Main

114 W. Main & 120 W. Main

29 W. Main

Mesa City Hall

305 E. Main

206 W. Main & 202 W. Main

Benedictine University

The Grid

Temple Area Development

137 W. Main

Mesa Center for the Arts

155 W. Main

Heritage Academy

LDS Mesa Arizona Temple

Subject Property

# 137 W. MAIN

## History

Originally built in 1954 as a former Surf and Ski. Includes a mid-space staircase

## Property

Ground Level: 11,708 sqft  
Basement Level: 4,160 sqft  
RSF: 15,868 sqft

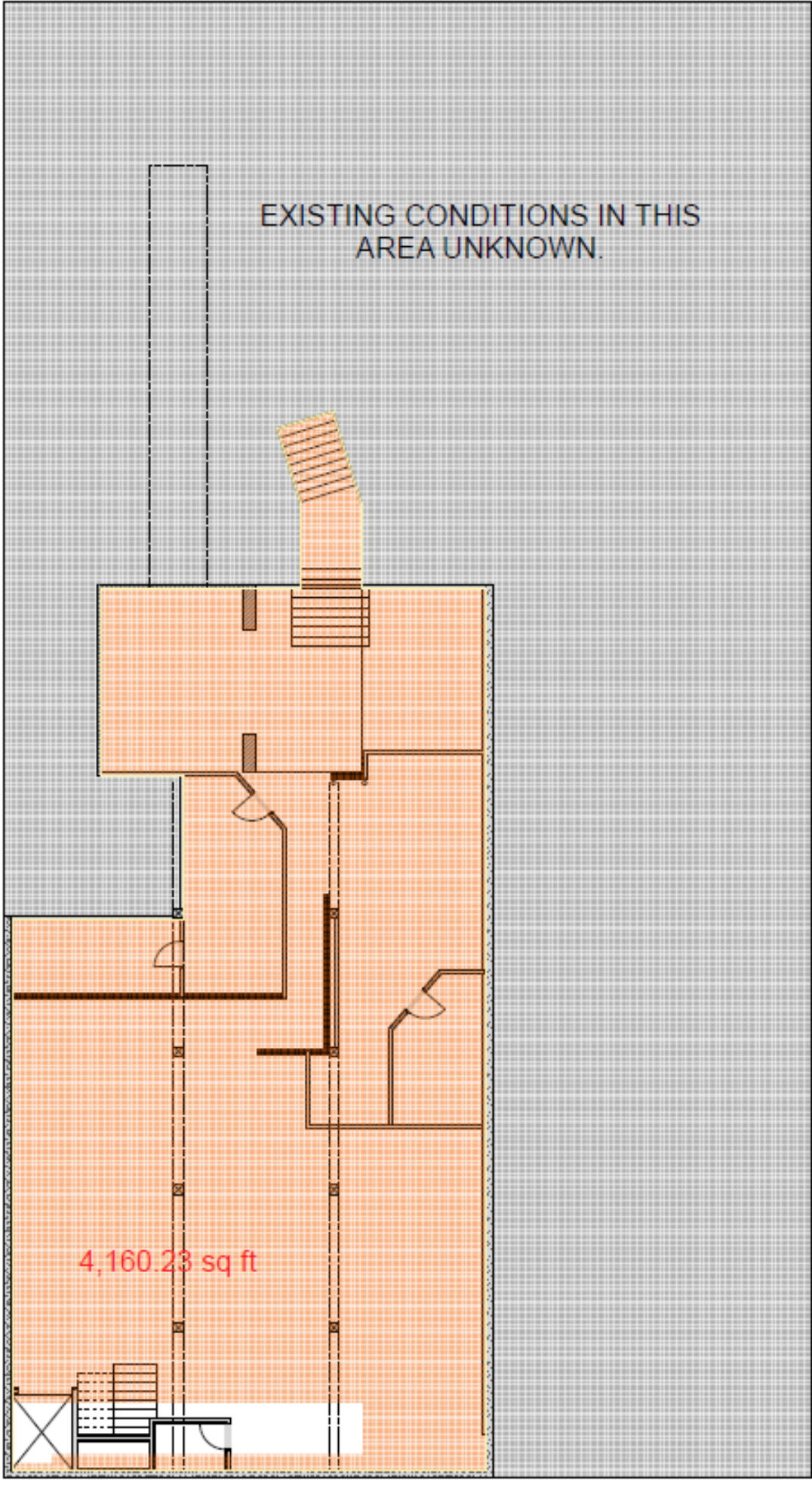
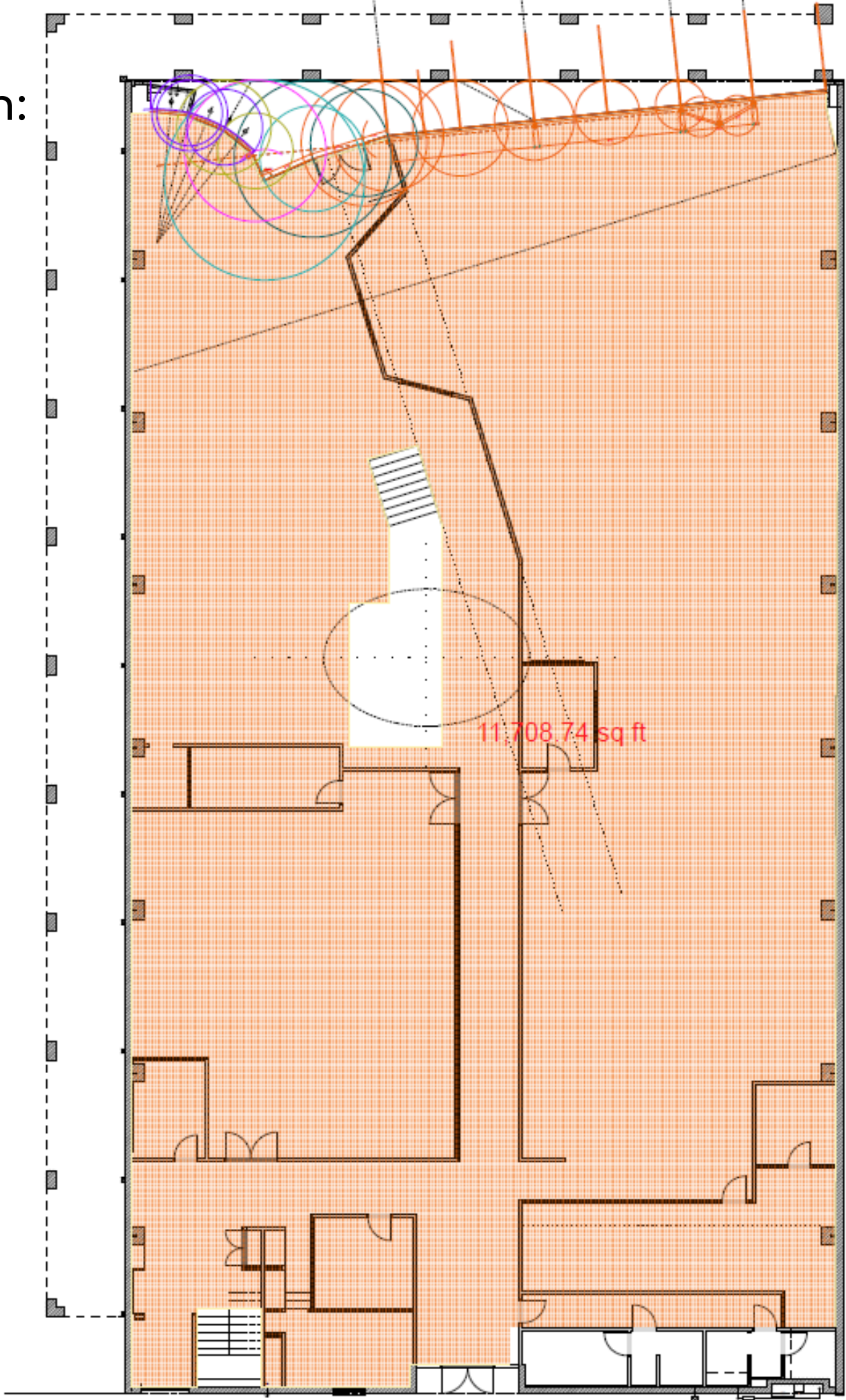


## Ammentities

Storefront property with high barrel ceilings, new roof, a side patio, high walkability score

Lot Size: 12,920 sqft

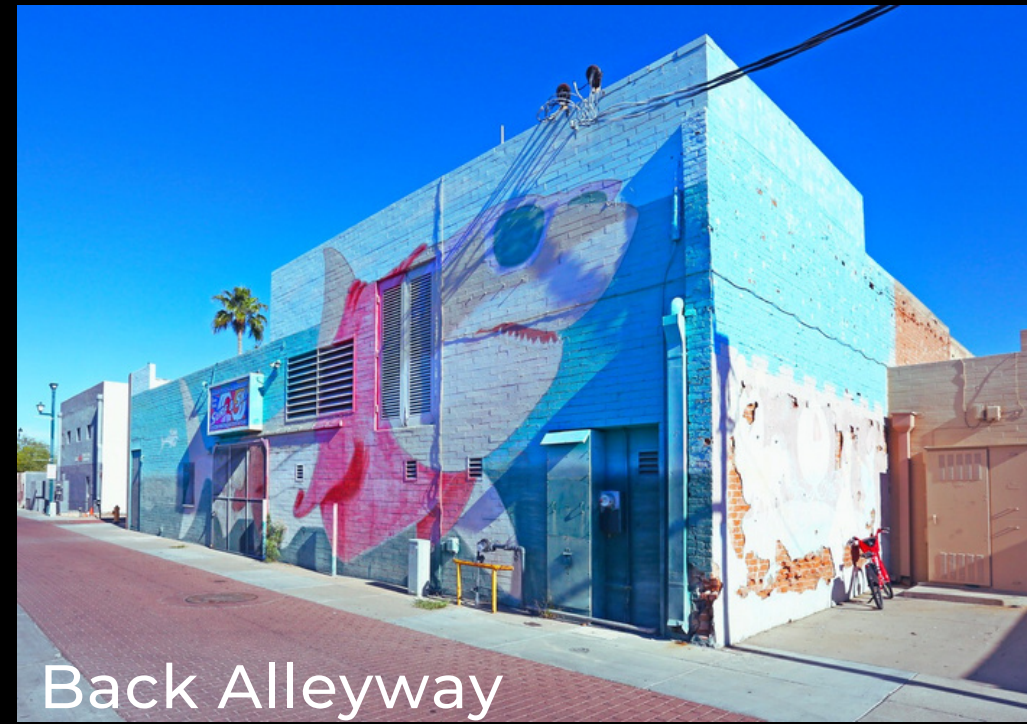
Floor Plan:



# Additional Photos



Front Breezeway



Back Alleyway



Basement



Interior First Floor



Side Walkway/Patio



Breezeway

# ***ADDITIONAL PROPERTIES***



**202 W. Main**

Storefront Retail/  
Residential



**206 W. Main**

Retail



**120 W. Main**

Storefront Retail/  
Residential

Arizona Museum of Natural History



ASU MIX Center

Downtown Mesa Community



Benedictine University



Pioneer Park



Mesa Arts Center



MESA PUBLIC LIBRARY  
64 EAST FIRST STREET



Mesa Convention Center



i.d.e.a. Museum

Interactive Downtown Map Link:

[http://www.scribblemaps.com/maps/view/Downtown\\_Mesa\\_Map/QsfyHHInZU](http://www.scribblemaps.com/maps/view/Downtown_Mesa_Map/QsfyHHInZU)

## Population:

3 Miles 5 Miles

2018 Estimated Pop. 180,939 369,524

2023 Projected Pop. 194,016 394,709

## Households:

3 Miles 5 Miles

2018 Est. Households 65,049 139,910

2023 Est. Households 69,648 149,322



**500,000**  
people live in  
Mesa, AZ



**#2**  
largest city in  
the Phoenix-  
Mesa metro area



**#3**  
largest city in  
the state of  
Arizona



**New Light Rail**  
Three stations provide passengers  
connectivity to high-quality housing,  
employment, shops, restaurants,  
and cultural attractions. Estimates of  
9,230 weekly riders



**1.8M**  
workforce  
population within a  
30 minute drive

Source: ESRI Analyst



**Smart Location**  
for Intelligent Companies  
**Apple, Boeing, Infineon,**  
**Bridgestone, Mitsubishi,**  
**Textron, and Dexcom** all have  
significant operations in Mesa



CPLC

**\$40MM**  
**RESIDENTIAL**



FOUND:RE

**\$50MM**  
**HOTEL/RES**



ASU - MESA

**\$75MM**  
**PHASE 1**



ARTSPACE LOFTS

**\$20MM**  
**RES/GALLERY**



TEMPLE DISTRICT

**\$200MM**  
**MIXED USE**



PIONEER PARK

**\$8MM**  
**PARK UPGRADES**



# DOWNTOWN MESA

Whether you're a first time visitor or a local resident who enjoys all that Downtown Mesa has to offer, we want to make your Downtown Mesa experience even better. This downtown map will help you locate where you can park for **FREE**. The map also provides information the businesses located near some of the more popular parking lots. Please know we're constantly working to make parking as easy and convenient as possible in Downtown Mesa.

Did you know that there are over 5,000 FREE parking spaces available in Downtown Mesa everyday?

-  Purple Parking Lot
-  Green Parking Lot
-  Orange Parking Lot
-  Gold Parking Lot
-  Additional Parking

\*Parking Garages are FREE daily after 5 PM and on the Weekends.



Please contact Downtown Mesa Association (DMA) at 480-890-2613 with any parking related questions.