



4,200-32,000 SF FOR LEASE

PROPERTY HIGHLIGHTS

- Available SF: 4,200 - 32,000 SF
- Strategically located with immediate access to DFW Airport, Love Field, I-35E, I-635, Northwest Highway, and the Dallas North Tollway.
- Security Gate

10969 SHADY TRAIL SUITE 103-109 DALLAS, TEXAS 75220

Leasing Contacts

Jay Lee
214-724-6155

jay@skylinerealtydallas.com

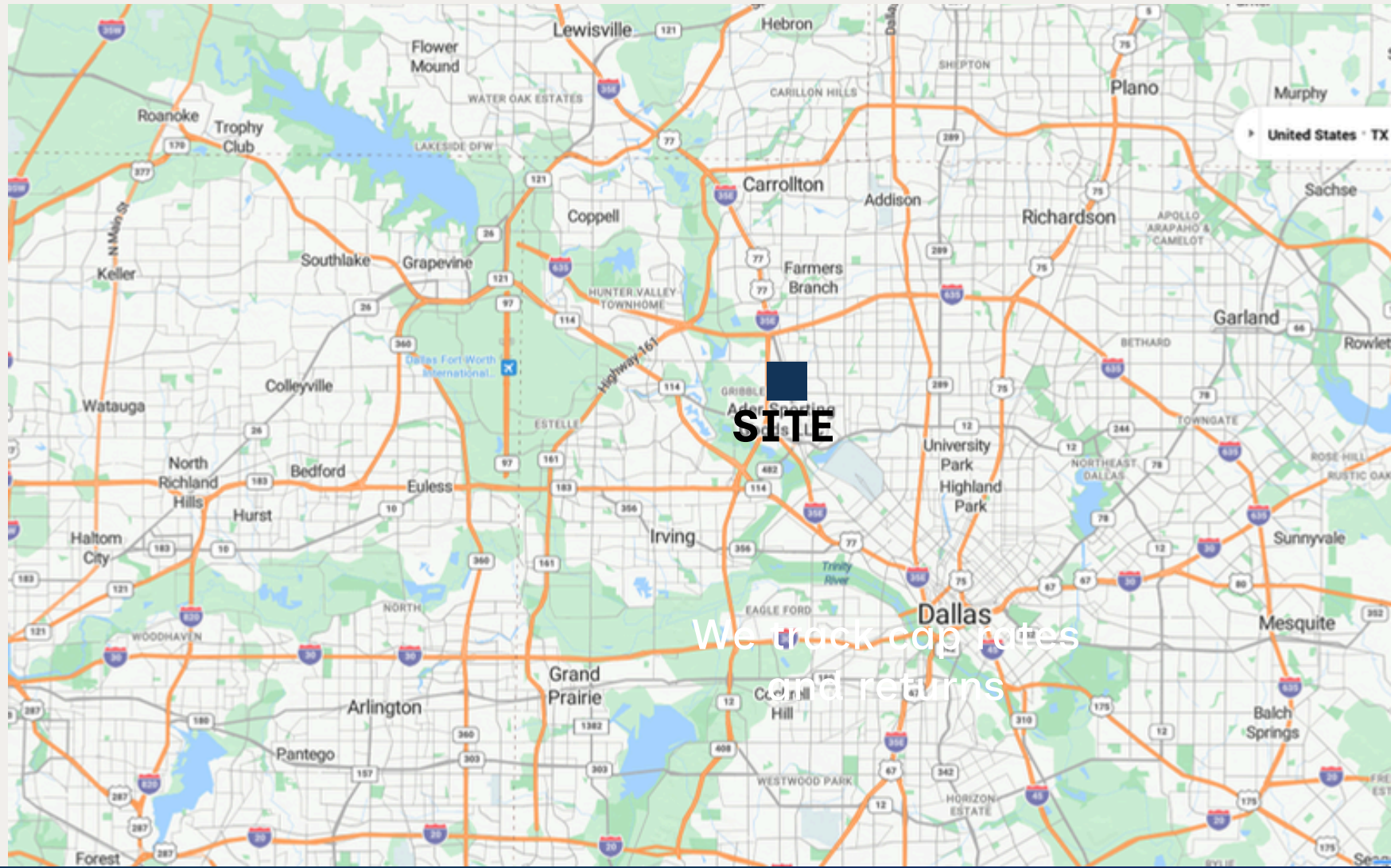
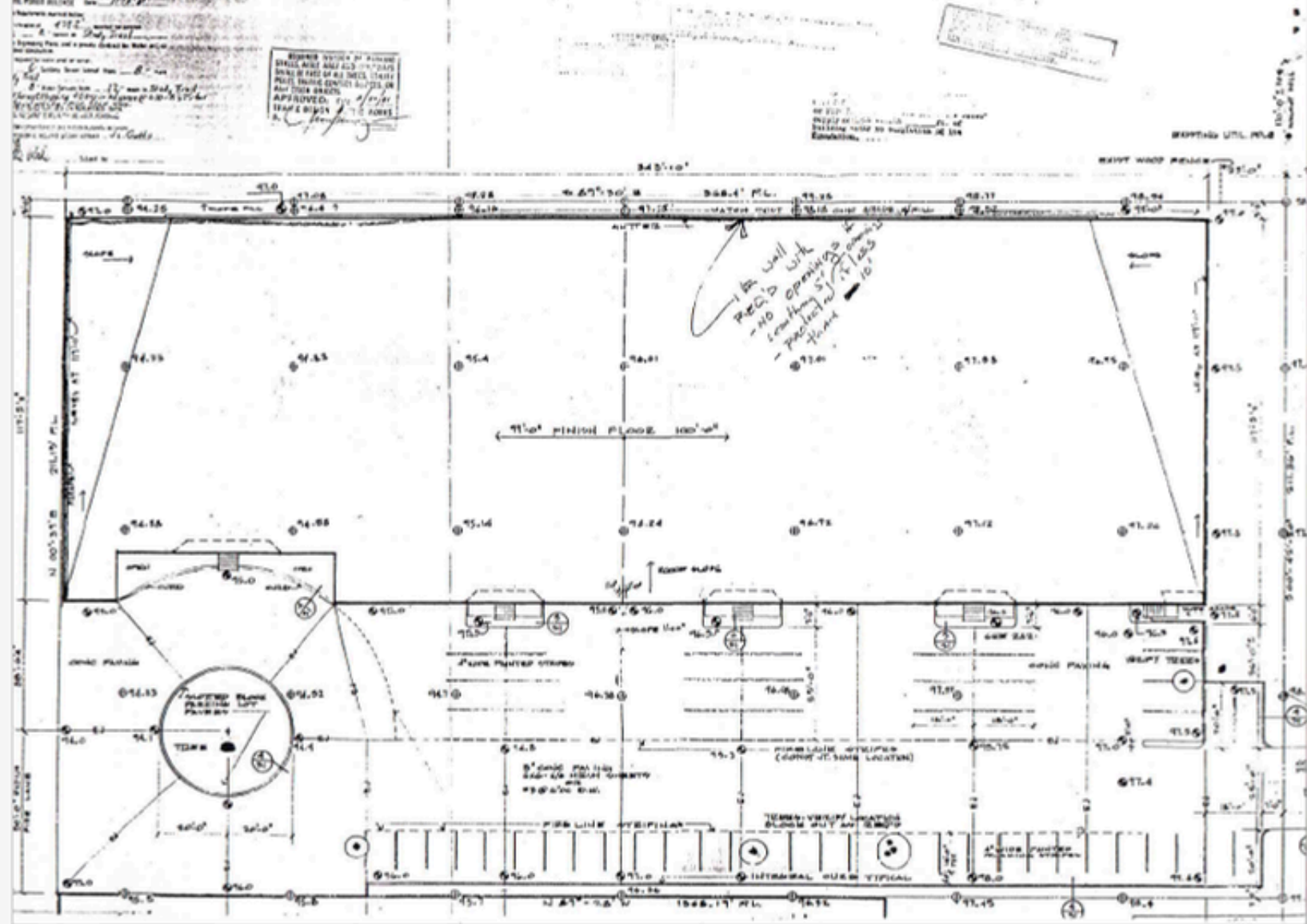
Rafael Babadzhanov

469-250-1999

rafael@skylinerealtydallas.com

All information provided has been obtained from the property owner or other sources we believe to be reliable. While we have no reason to question its accuracy, we do not guarantee it. Prospective buyers and tenants should independently verify all information prior to entering into any agreement. or this





SPACE FEATURES

- Flexible Lease Terms
- 9 Dock Doors
- Office Spaces
- Suites 103-109 Available
- Clear Height: 18'
- Drive in concrete ramp

Leasing Contacts

Jay Lee
 214-724-6155
 jay@skylinerealtydallas.com

Rafael Babadzhanov
 469-250-1999
 rafael@skylinerealtydallas.com



All information provided has been obtained from the property owner or other sources we believe to be reliable. While we have no reason to question its accuracy, we do not guarantee it. Prospective buyers and tenants should independently verify all information prior to entering into any agreement. or this