



585 Stevens Dr, Ste P595

Richland, Washington 99352

Property Overview

Positioned just east of Wellsian Way, a classic arterial in Richland, WA, this retail/office property offers excellent visibility and access.

The site features two buildings with a total of 4 available suites: P595 (1,100 SF), P599 (1,680 SF), B563 (1,620 SF), and B565 (1,620 SF).

Ideal for a variety of retail or office users, the property provides flexible leasing opportunities. Ownership is motivated and open to negotiate.

Property Highlights

- Well established commercial area
- New paint and carpet offered up front
- Customizable to fit your needs
- Reasonable landlords with experience

Offering Summary

Lease Rate:	\$15 SF/yr (NNN)
Available SF:	±1,100 SF

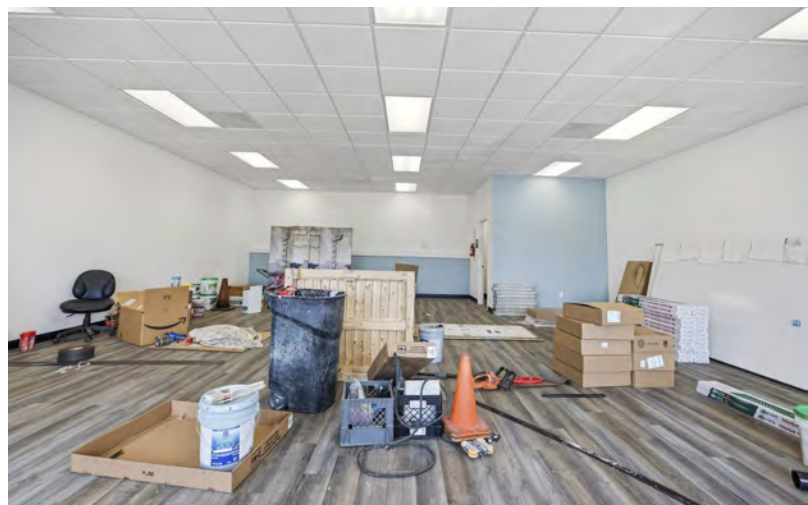
For More Information

Vicki Monteagudo

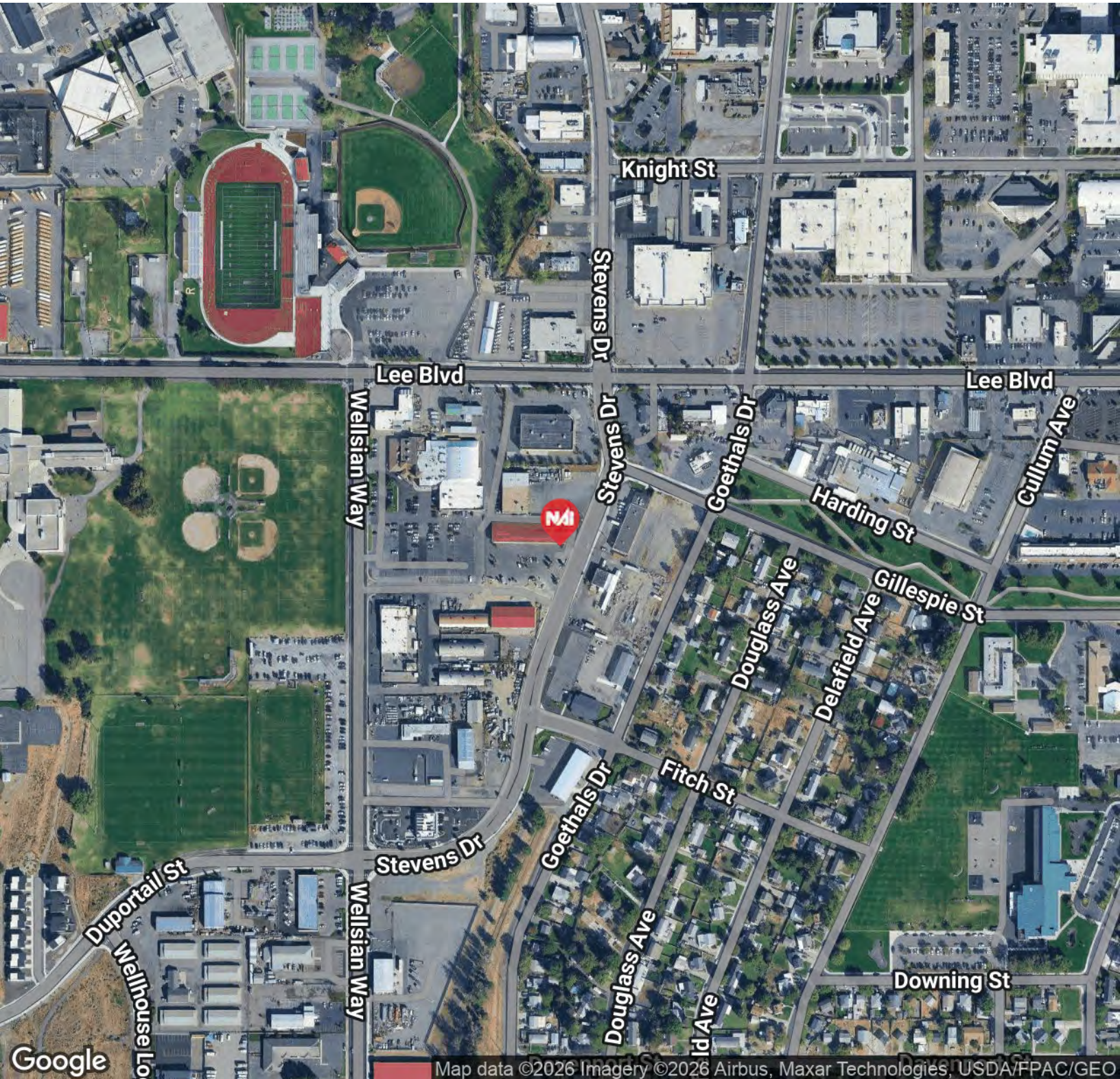
Designated Broker/Principal
C: 509 405 7044
vicki@naitcc.com

Bryce Logan

Commercial Broker
C: 509 521 5396
bryce@naitcc.com

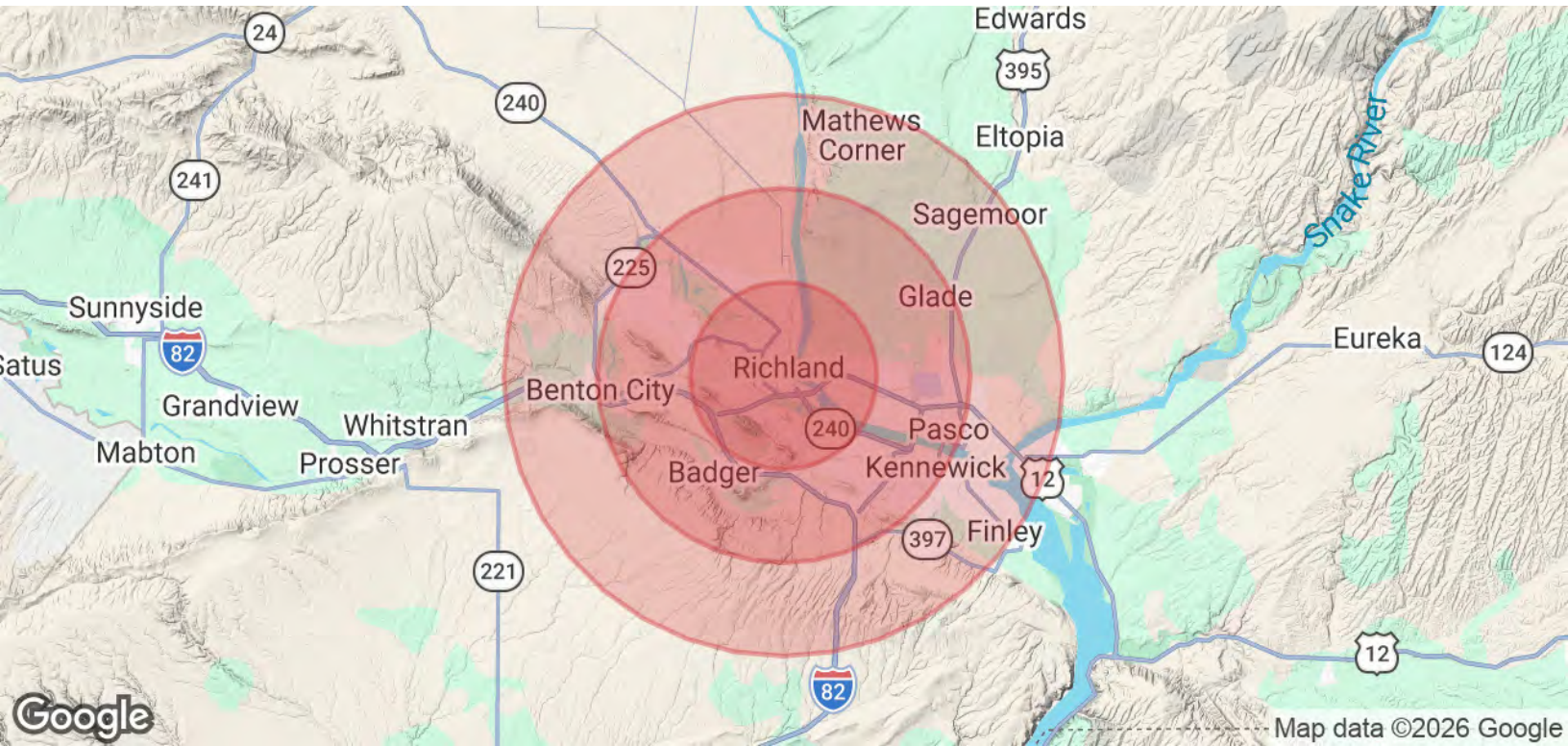






FLYER | 585 Stevens Dr Richland, WA 99352

We obtained the information above from sources we believe to be reliable. However, we have not verified its accuracy and make no guarantee, warranty or representation about it. It is submitted subject to the possibility of errors, omissions, change of price, rental or other conditions, prior sale, lease or financing, or withdrawal without notice. We include projections, opinions, assumptions or estimates for example only, and they may not represent current or future performance of the property. You and your tax and legal advisors should conduct your own investigation of the property and transaction.



Population	5 Miles	10 Miles	15 Miles
Total Population	105,574	246,180	277,615
Average Age	36.9	35.6	35.2
Average Age (Male)	36.3	35.3	34.9
Average Age (Female)	37.8	36.2	35.8
Households & Income	5 Miles	10 Miles	15 Miles
Total Households	39,662	87,832	96,980
# of Persons per HH	2.7	2.8	2.9
Average HH Income	\$124,776	\$111,690	\$111,080
Average House Value	\$415,373	\$396,523	\$390,145

2023 American Community Survey (ACS)