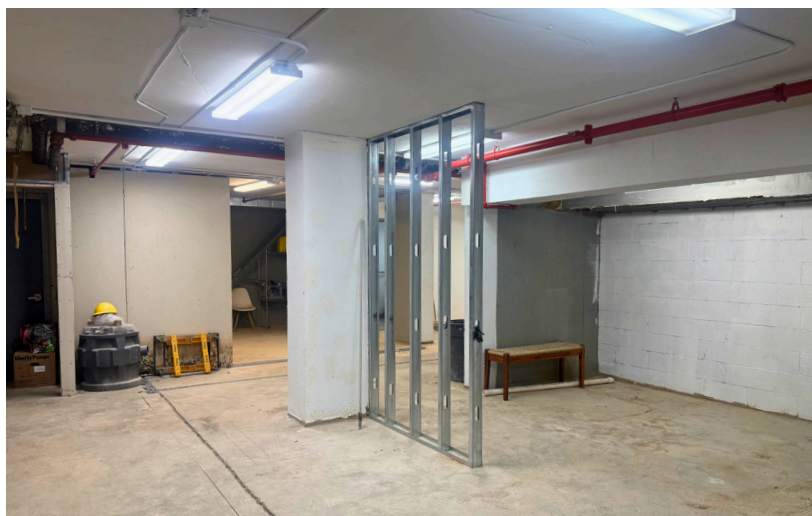




HARLEM MEDICAL/COMMERCIAL SPACE FOR LEASE 344 E. 110TH STREET • NEW YORK, NY 10029



Details:

Address: 344 E.110th St, NY

Size: 3,000 sf

Type: Medical/Commercial

Price: \$8,000/Month

Notes: ADA Compliant, has two bathrooms, central AC & heating

Features:

- Located in East Harlem
- Delivered turnkey
- Can be configured to medical space needs
- Elevator to space
- Perfect for medical user or adult daycare business

Contact Exclusive Agents

Elias Everett - 914.907.3858 - elias@southbronxcommercial.com

Augusto De la Cruz - 929.437.9958 - august@southbronxcommercial.com

www.southbronxcommercial.com



HARLEM MEDICAL/COMMERCIAL SPACE FOR LEASE
344 E. 110TH STREET • NEW YORK, NY 10029

Additional Photos



Contact Exclusive Agents

Elias Everett - 914.907.3858 - elias@southbronxcommercial.com

Augusto De la Cruz - 929.437.9958 - august@southbronxcommercial.com

www.southbronxcommercial.com



HARLEM MEDICAL/COMMERCIAL SPACE FOR LEASE
344 E. 110TH STREET • NEW YORK, NY 10029

Additional Photos



Contact Exclusive Agents

Elias Everett - 914.907.3858 - elias@southbronxcommercial.com

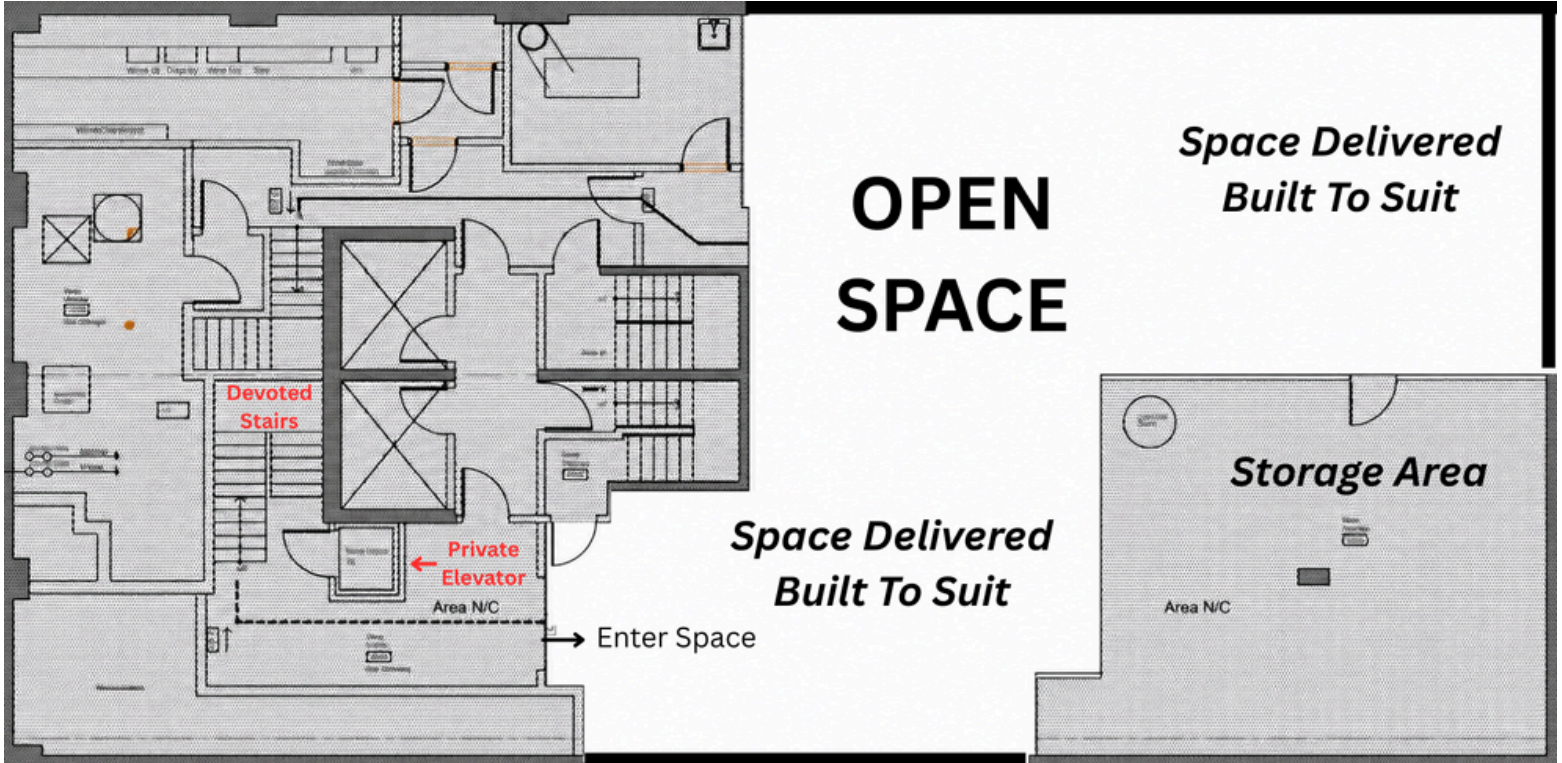
Augusto De la Cruz - 929.437.9958 - august@southbronxcommercial.com

www.southbronxcommercial.com



HARLEM MEDICAL/COMMERCIAL SPACE FOR LEASE
344 E. 110TH STREET • NEW YORK, NY 10029

Floorplan



The white open space will be delivered built to suit on the instruction of the tenant.

Contact Exclusive Agents

Elias Everett - 914.907.3858 - elias@southbronxcommercial.com

Augusto De la Cruz - 929.437.9958 - august@southbronxcommercial.com



HARLEM MEDICAL/COMMERCIAL SPACE FOR LEASE
344 E. 110TH STREET • NEW YORK, NY 10029

Satelite View



Contact Exclusive Agents

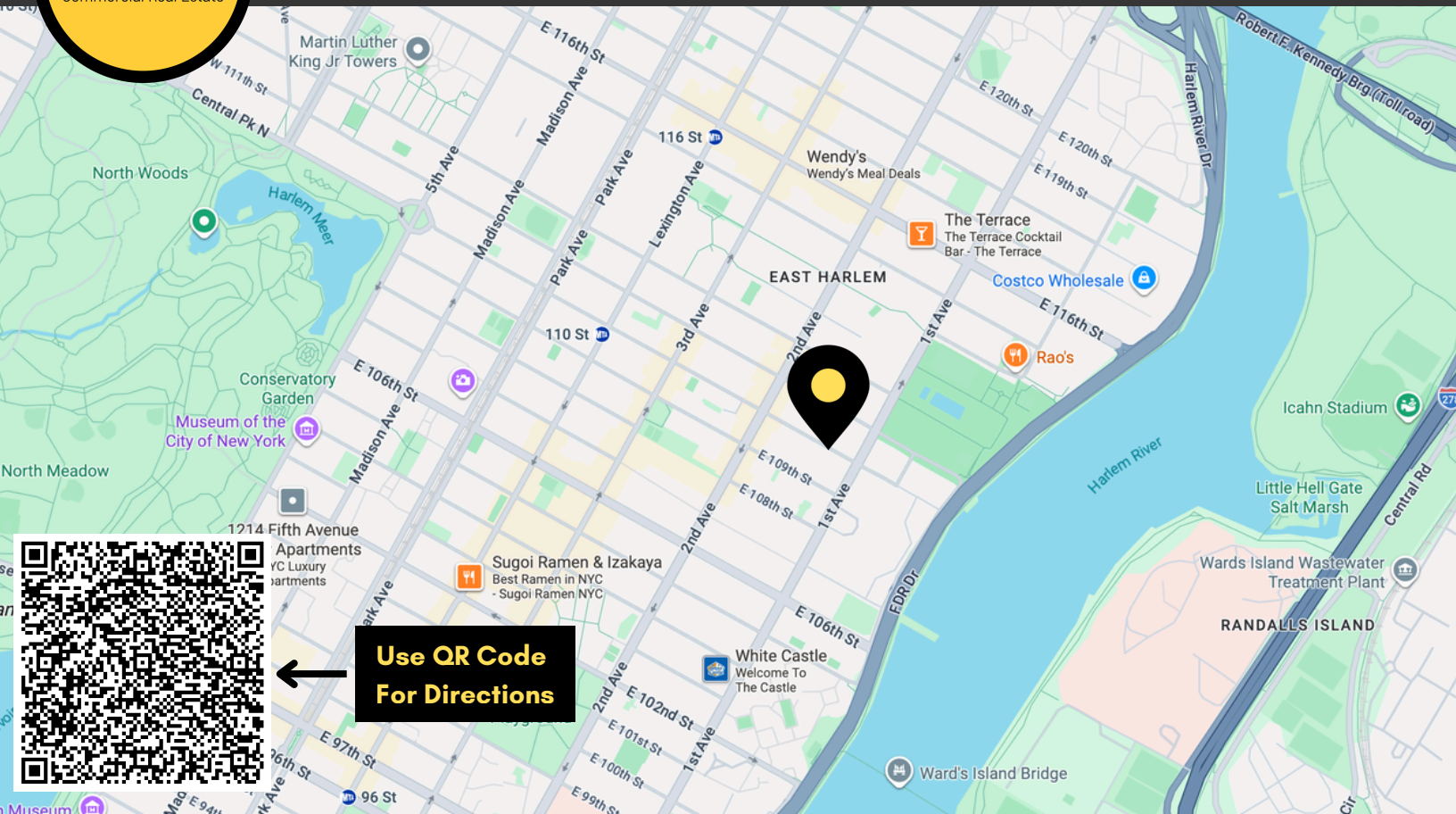
Elias Everett - 914.907.3858 - elias@southbronxcommercial.com

Augusto De la Cruz - 929.437.9958 - august@southbronxcommercial.com

www.southbronxcommercial.com



HARLEM MEDICAL/COMMERCIAL SPACE FOR LEASE 344 E. 110TH STREET • NEW YORK, NY 10029



Offering Details

- Available Space: 3,000 SF
- Rent: \$8,000/month
- Zoning: C2
- Private elevator
- Will be delivered as a white box with rooms. Fitted to tenant's needs.

Property Overview

- Located in residential building
- Property built in 2016
- First time occupancy opportunity

Location Details

- Easy access to FDR Drive
- Short walk to subway
- Easy access to Queens and the Bronx via RFK Bridge
- Located in East Harlem

Commentary:

Turnkey lower-level office space available in East Harlem. The space is easily accessible via elevator and is well suited for medical use or an adult daycare facility. Functional layout with convenient building access for clients and staff. Excellent location with quick access to the FDR Drive, making travel throughout Manhattan and the Bronx efficient.

Contact Exclusive Agents

Elias Everett - 914.907.3858 - elias@southbronxcommercial.com

Augusto De la Cruz - 929.437.9958 - august@southbronxcommercial.com