

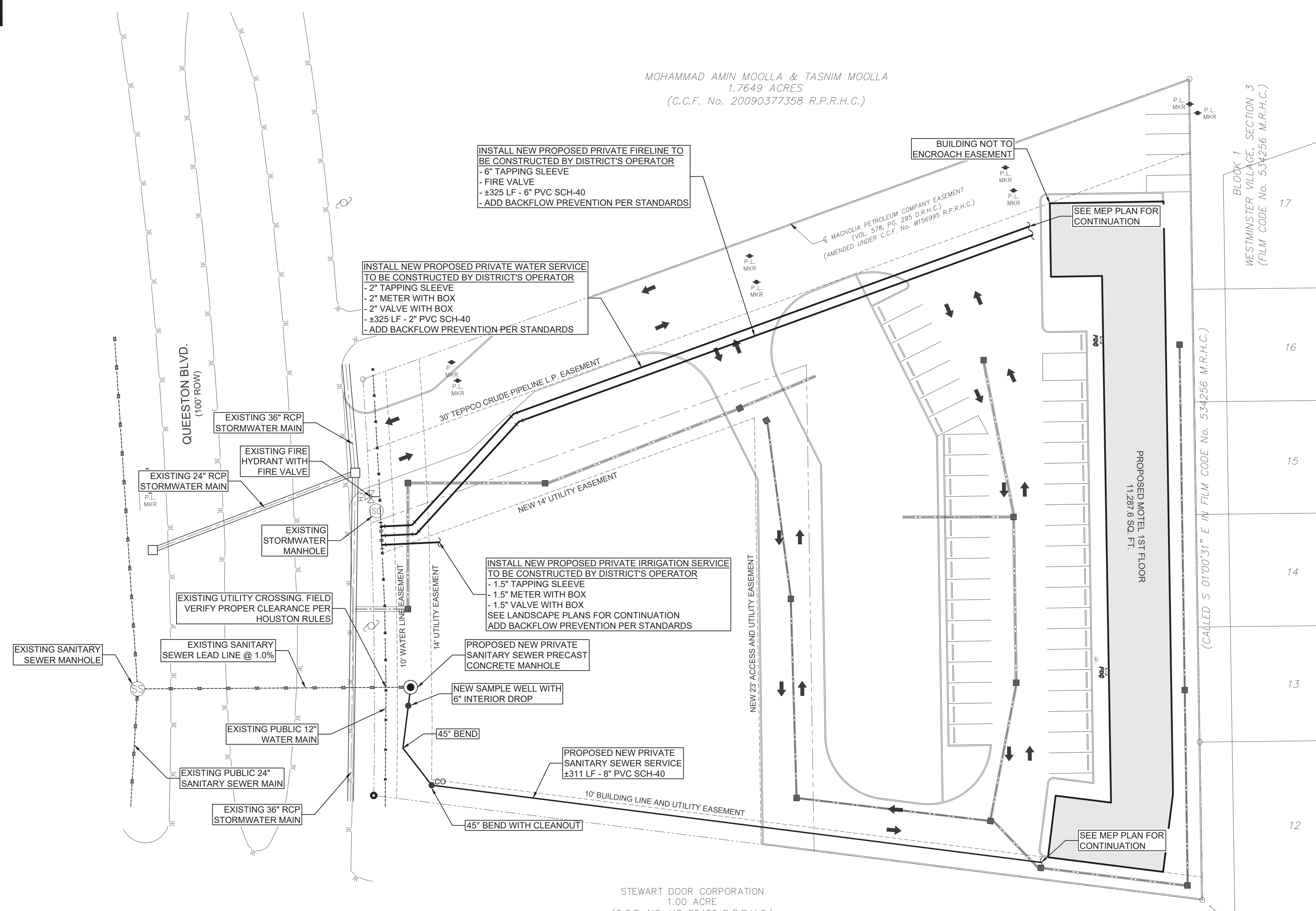
LOCATION MAP



SCALE: 1"=30'
0 30 60

LEGEND

	EXISTING:	PROPOSED:
PROPERTY LINE	---	---
FOUND BOUNDARY CORNER	○	○
BENCHMARK	+	+
WIRE FENCE	---	---
WOODEN FENCE	---	---
CHAIN LINK FENCE	---	---
CURB	---	---
SAWTOOTH CURB	---	---
HEADER CURB	---	---
EDGE OF PAVEMENT	---	---
ASPHALT PAVEMENT	---	---
CONC. PAVEMENT	---	---
HD CONC. PAVEMENT	---	---
CONC. SIDEWALK / FLAT WORK	---	---
GRAVEL	---	---
LANDSCAPE	---	---
SIDEWALK RAMP	---	---
ACCESSIBLE PARKING	---	---
SIGN	---	---
WHEEL STOP	---	---
BUILDING	---	---
WATER LINE	---	---
FIRE LINE	---	---
WATER VALVE	---	---
WATER METER	---	---
FIRE HYDRANT	---	---
SANITARY SEWER LINE	---	---
SANITARY SEWER MANHOLE	---	---
SANITARY SEWER CLEANOUT	---	---
STORM DRAIN LINE	---	---
STORM DRAIN MANHOLE	---	---
GRATE INLET	---	---
GAS LINE	---	---
GAS VALVE	---	---
OVERHEAD ELECTRIC	---	---
POWER POLE	---	---
LIGHT POLE	---	---
CONTOUR	---	---
HIGH POINT	---	---
FLOW LINE	---	---
DIRECTION OF FLOW	---	---
SPOT ELEVATION	---	---
CURB ELEVATION	---	---
WALL ELEVATION	---	---
TREE	---	---
TREE PROTECTION	---	---
SILT FENCE	---	---
FIRE LANE	---	---
FIRE HOSE LAY	---	---



ENGINEERING
structural + civil

F-12583
A-1 ENGINEERING, LLC
STRUCTURAL + CIVIL ENGINEERING

1006 Vance Jackson Rd., San Antonio, Texas
Ph. (210) 591-8829
401 Congress Ave., Suite 1540 Austin, Texas
Ph. (512) 296-3360

www.A-1Engineering.com Copyright © 2021

AMERICAS BEST VALUE INN AND SUITES
UTILITY PLAN
6424 QUEENSTON BOULEVARD
HOUSTON, TEXAS 77084

BY	DATE	ISSUED FOR PERMIT	REMARKS
MAC	7.20.2023		

A-1 ENGINEERING, LLC F-12583
STATE OF TEXAS
MOISES A. CRUZ
108540
PROFESSIONAL ENGINEER

Moises A. Cruz, P.E.
Date: 2023.07.21
10:19:38 -0500
F-12583

BARKER-CYPRESS MUNICIPAL UTILITY DISTRICT ENGINEER DATE SIGNATURE VALID FOR ONE (1) YEAR

*OUR PLAN APPROVAL DOES NOT INCLUDE A DETERMINATION THAT THE ONSITE PRIVATE UTILITIES WERE DESIGNED PROPERLY. WE REVIEWED THE PLANS SOLELY FOR GENERAL COMPLIANCE WITH THE DISTRICT'S RATE ORDER.

THIS DOCUMENT EXPIRES 12 MONTHS FROM THE DATE OF SIGNATURE

SHEET SIZE: 24" x 36"

ISSUE DATE: 7.20.2023

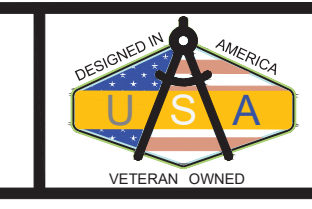
SHEET:

C5.0
A-1E JOB # 23-9474

C:\Users\Andrew\AppData\Local\Temp\AcPublish\19064123-9474-6424 Queenston Blvd.-C5.0 Utility Plan.dwg 2023/07/20 11:24pm Andrew

ANY PARTY, REFERENCING THESE PLANS FOR PRICING OR CONSTRUCTION, SHALL VERIFY ALL FIELD CONDITIONS WHICH WILL AFFECT THEIR SCOPE OF WORK, THE PROCUREMENT OF MATERIAL, AND FABRICATION OF COMPONENTS FOR THE CONSTRUCTION SHOWN ON THESE PLANS PRIOR TO THE START OF CONSTRUCTION. UNLESS OTHERWISE INDICATED, THE DOCUMENTS DO NOT INDICATE THE MEANS AND METHOD OF CONSTRUCTION. THE CONTRACTOR SHALL TAKE ALL MEASURES TO PROTECT THE SAFETY OF THE PUBLIC ALONG WITH THE SAFETY OF PROPERTY AND HIMSELF, DURING CONSTRUCTION. SUCH MEASURES SHALL INCLUDE, BUT NOT BE LIMITED TO, RETAINING PROFESSIONAL TO AID IN DEVELOPING, SHORING AND BRACING SYSTEMS, AND INSPECTION OF THE ASSEMBLY AND MAINTENANCE OF BRACING AND SHORING SYSTEMS. DESIGN, CONSTRUCT, INSPECT AND MAINTAIN BRACING AND SHORING SYSTEMS TO SUSTAIN PRESCRIBED SERVICE LOADS PER THE INTERNATIONAL BUILDING CODE. THE CONTRACTOR WILL BE REQUIRED TO CORRECT AT HIS OWN EXPENSE ANY SUBSIDENCE, STRUCTURAL DAMAGE OR OTHER OBJECTIONAL CONDITIONS CAUSED BY HIS OPERATIONS.

ISSUED FOR PERMIT





ISSUE LOG	
May, 2016	
Designed by: Patel-Tex Inc.	
Drawn by: Jose Juan Perez Martinez	
Checked by: Jorge Trevino	
NO. DESCRIPTION	
1	
2	
3	
4	
5	

AMERICAS BEST VALUE INN & SUITES
 OWNER:
 6424 Queenston Blvd., Houston Tx. 77084

JL Trevino & Associates P.L.L.C.
 9800 Northwest freeway, 500
 Houston, Texas, 77092
 (281) 433-8688
 jltandassociates@gmail.com

This is an original design by J. TREVINO & ASSOCIATES and is solely owned by and for the exclusive use of and by J. TREVINO & ASSOC. All rights are reserved. Any infringement of this copyright is prohibited by law.

Legal Description	
LOT/TRACK TR 1A-6 ABST 910 CO	
BLOCK SEC 11 BLK 2	
TAX ID: 046010000057	
SUBD.	
KEY-MAP	407 U
FLOOD ZONE	X

PATEL - TEX INC.
 FIRM No. F-9040
 Engineers & Planners
 9727 THERRELL DRIVE
 HOUSTON, TEXAS 77064

State of Texas
 JORGE LUIS TREVINO
 Professional Engineer
 No. 96465

Scale: 1:20
 DGN. BY: PATEL-TEX INC.
 CHK. BY: JLTrevino & Assoc.

Job Number:
C-23 08/19/2016

Plot Date:
 June 13, 2017

TX FIRM #10510
 5/3/2018

Sheet Number:
C-15.0

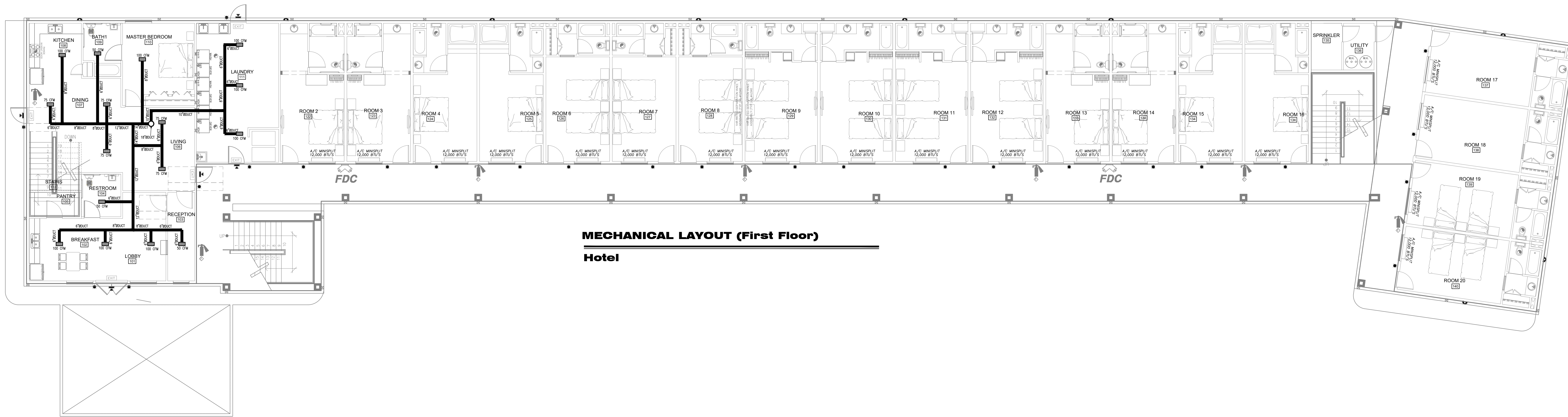
DEPARTMENT OF PLANNING AND DEVELOPMENT LANDSCAPE ANALYSIS	
A. STREET TREES:	
Length of property line in lineal feet as measured along all sides of the property fronting on a public street(s) = 180 lineal feet/30 = 6 Street trees required. (Staff may create an artificial lot)	
B. PARKING LOT TREES:	
Number of new parking stalls to be constructed 45 /10 = 5 Parking lot trees required.	
C. TOTAL TREE REQ.	
A + B = 11 total number of street and parking lot trees required.	
D. SHRUBS:	
(Are required for new or the expanded portion of parking lots) Total number of street trees required, from A above X 10 = 110 shrubs.	
E. LANDSCAPE BUFFER:	
30'-60" high screening fence, or 30'-60" side evergreen planting strip along the total length of property line adjacent to existing single-family residential, or limit of expansion adjacent to existing single-family residential. (Site plan must show land use on all sides of the property).	

PLANT SCHEDULE						
SYMBOL	KEY	QTY.	SCIENTIFIC NAME	COMMON NAME	SIZE	REMARKS
	QV	11	QUERCUS VIRGINIANA	LIVE OAK	2' CAL	STRAIGHT SINGLE TRUNK FULL SYMMETRICAL HEAD 12'-14' HT. X 7'-8" SPREAD
	PN	110	NANDINA DOMESTICA 'NAVA PURPUREA'	DWARF PURPLE NANDINA	5 GAL	10" HT. X 15" MIN. SPREAD FULL POT, 2 YEAR PLANT 2-4" g.c.
	SS	00	ATENANTHURUM SECUNDATUM	SAINTE AUGUSTINE		SOLID SOD GRASS

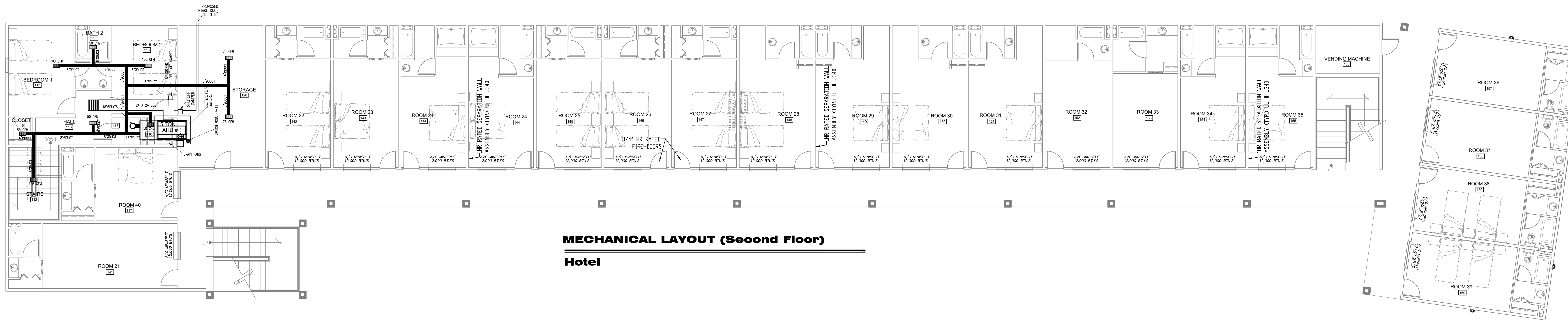


$R=2050.00'$
 $L=180.95'$
 $\Delta=5^{\circ}03'27''$
 CHB=N 129'26" W
 CHL=180.89'

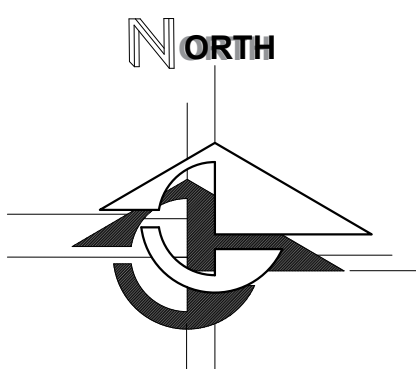
$R=2050.00'$
 $L=326.30'$
 $\Delta=9^{\circ}07'11''$



MECHANICAL LAYOUT (First Floor)
Hotel



MECHANICAL LAYOUT (Second Floor)
Hotel



ISSUE LOG May, 2016

NO.	DESCRIPTION
1	
2	
3	
4	
5	

AMERICAS BEST VALUE INN & SUITES
OWNER:
6424 Queenston Blvd. Houston Tx. 77084

JL Trevino & Associates P.L.L.C.
9800 Northwest Freeway, 500
Houston, Texas 77092
(281) 433-8668
jtrevino@jlatc.com

This is an original design and is solely owned by J. TREVINO & ASSOCIATES. All rights are reserved. Any infringement of this copyright is prohibited by law.

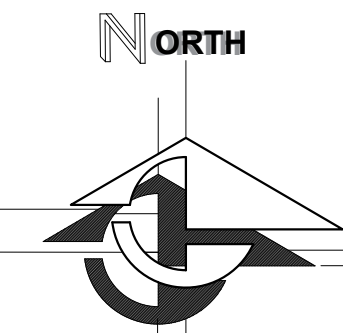
Legal Description

LOT/TRACK	TR 1A-6 ABST 910 CO
BLOCK	SEC 11 BLK 2
TAX ID:	046010000057
SUBD.	
KEY-MAP	407 U
FLOOD ZONE	X

PATEL - TEX INC.

FIRM No. P-9040
Engineers & Planners
9727 THERRELL DRIVE
HOUSTON, TEXAS 77064

<p>Seal:</p> <p>INTERIM REVIEW ONLY</p> <p>THIS DOCUMENT IS RELEASED FOR THE PURPOSE OF INTERIM REVIEW UNDER THE AUTHORITY OF P.E. DHRUBHAR R PATEL</p> <p>P.E. DHRUBHAR R PATEL</p> <p>DATE: August 22, 2018</p> <p>IT IS NOT TO BE USED FOR CONSTRUCTION, RECORD OR PERMITTING PURPOSES.</p>	<p>Sheet Name:</p> <p>Mchanical Layout</p>	<p>Scale:</p> <p>1/8" = 1'-0"</p> <p>DGN. BY: PATEL-TEX INC.</p> <p>CHK. BY: JLTrevino & Assoc.</p> <p>Plot Date:</p> <p>August 22, 2018</p>	<p>Job Number:</p> <p>C-23 08/19/2016</p> <p>Sheet Number:</p> <p>M100</p>
--	--	--	---



ISSUE LOG

May, 2016

Company: Patel-Tex Inc.

Drawn by: Jose Juan Perez Martinez

Checked by: Jorge Trevino

No. DESCRIPTION

1	
2	
3	
4	
5	

AMERICAS BEST VALUE INN & SUITES
OWNER: Houston Tx. 77084
6424 Queenston Blvd.

JL Trevino & Associates P.L.L.C.
9800 Northwest Freeway, 500
Houston, Texas 77092
(281) 433-8688
jtrevino@americasbestvalueinn.com

This is an original design prepared by J.L. Trevino & Associates and is solely owned by and for the exclusive use of and by J.L. Trevino & Assoc. All rights are reserved. Any infringement of this copyright is prohibited by law.

Legal Description

LOT 7 TRACK 1 TR 1A-6 ABST 910 CC

BLOCK SEC 11 BLK 2

TAX ID: 0360100000072

SUBD.

KEY-MAP 407 U

FLOOD ZONE: X

Sheet Name:

Mechanical Calc. & Spec.

Job Number: C-23 08/19/2016

Sheet Number: M200

DATE: August 22, 2018

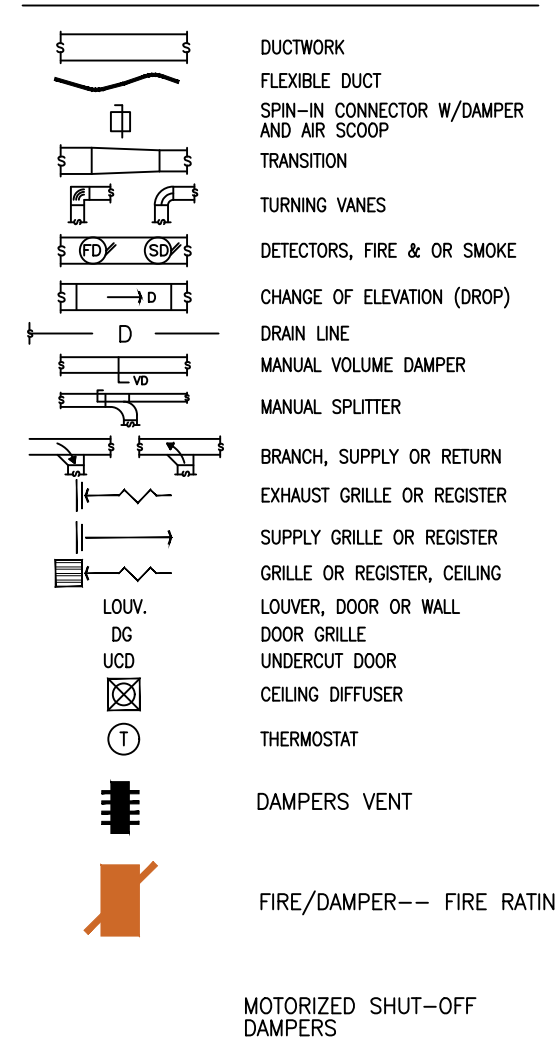
August 22, 2018

PATEL - TEX INC.
FIRM No. P-9040
Engineers & Planners
9727 THERRELL DRIVE
HOUSTON, TEXAS 77064

INTERIM REVIEW ONLY
THIS DOCUMENT IS RELEASED FOR THE PURPOSE OF INTERIM REVIEW UNDER THE AUTHORITY OF P.E. DHIRUBHAR PATEL
DATE: August 22, 2018
IT IS NOT TO BE USED FOR CONSTRUCTION, RECORD OR PERMITTING PURPOSES.

Scale: Mechanical Calc. & Spec.
Job Number: C-23 08/19/2016
Sheet Number: M200
DATE: August 22, 2018
August 22, 2018

MECHANICAL SYMBOLS



GENERAL MECHANICAL NOTES:

- THE MECHANICAL CONTRACTOR SHALL SUPPLY OWNER WITH COMPLETE SHOP DRAWINGS, SHOWING SIZE OF ALL UNITS, DIFFUSERS, DUCT WORK ETC./H-2026. PERTAINING TO HIS WORK AND ANY CHANGES REQUIRED TO PROVIDE A COMPLETE H.V.A.C. SYSTEM.
- ALL HEATING, VENTILATING AND AIR CONDITIONING (H.V.A.C.) WORK SHALL COMPLY WITH ALL APPLICABLE LOCAL AND STATE CODES.
- UNLESS OTHERWISE NOTED THE MECHANICAL CONTRACTOR SHALL FURNISH AND INSTALL ALL EQUIPMENT AND MATERIAL REQUIRED FOR A COMPLETE SYSTEM.
- ALL AIR CONDITIONING, HEATING AND EXHAUST EQUIPMENT MUST DISPLAY AN APPROVED TESTING AGENCY ACCEPTANCE SYMBOL.
- THE MECHANICAL CONTRACTOR SHALL GUARANTEE HIS WORK FOR ONE FULL YEAR.
- AIR CONDITIONING COMPRESSORS SHALL HAVE A SEER RATING OF 9+ WITH A FIVE YEAR WARRANTY.
- THE MECHANICAL CONTRACTOR SHALL PAY ALL FEES, COST OF PERMITS AND PRO RATA COST UP TO 20%.
- AIR CONDITIONING UNITS RATED OVER 2000 CFM SHALL BE EQUIPPED WITH AUTOMATIC SHUT-OFF SMOKE DETECTORS IN SUPPLY AND RETURN AIR.
- LOCATE OUTSIDE AIR INTAKES A MINIMUM OF 10' HORIZONTALLY OR 3' VERTICALLY BELOW ALL PLUMBING VENTS, HEATING FULES AND EXHAUST VENTS.
- ALL SUPPLY AND RETURN AIR DUCTS TO BE ZINC COATED GALVANIZED STEEL, G-90, INSTALLED PER THE LATEST S.M.A.C.N.A. STANDARDS, ALL DUCT JOINTS SHALL BE SEALED WITH DUCT SEAL MASTIC.
- INTERNALLY INSULATE SUPPLY AND RETURN AIR DUCTS WITH 1 1/2" THICK, 1 1/2 LB/SP' DUCT LINER, EQUAL TO JOHN-MANVILLE AEROFLEX. MECHANICAL FASTENERS REQUIRED ON DUCTS OVER 12" WIDE. DUCT SIZES ARE FOR INTERNAL FREE AIR, INCREASE SIZE FOR DUCT LINER. EXHAUST DUCTS ARE NOT INSULATED.
- VERIFY EXACT LOCATION OF CEILING AIR DEVICES WITH ARCHITECTURAL AND ELECTRICAL DRAWINGS.
- FLEXIBLE DUCTS SHALL BE PRE-INSULATED, USE SPIN-IN CONNECTOR WITH AIR SCOOP AND DAMPER AT DUCT TAKE-OFFS. DUCT SIZES ARE FOR INTERNAL FREE AIR.
- CONDENSATE TRAP AND DRAIN PIPING SHALL BE SCHEDULE #40 PVC PIPE INSULATE ALL CONDENSATE DRAIN PIPING WITH 1/2" THICK ARMAFLEX.
- SIZE ALL REFRIGERATION PIPING ACCORDING TO MANUFACTURERS REPRESENTATIVE INSULATE REFRIGERATION SUCTION LINE WITH 1/2" THICK ARMAFLEX. ALL REFRIGERATION PIPING SHALL BE COPPER (TYPE "K" SOFT OR TYPE "L" HARD).
- SEAL ALL PIPE AND DUCT PENETRATIONS OF WALLS.
- COORDINATE H.V.A.C. PLAN WITH ARCHITECTURAL STRUCTURAL PLUMBING AND ELECTRICAL.

SCHEDULE OF AIR DEVICES

MARK	DESCRIPTION
LOUV	TITUS MODEL OXL-02 EXTERIOR WEATHERPROOF LOUVER WITH CHANNEL FRAME, STANDARD FINISH AND BROSCREEN.
CG	TITUS MODEL TMDC LOUVERED FACE CEILING DIFFUSER WITH OFF-WHITE FINISH AND OPPOSED BLADE VOLUME DAMPER.
RAC	TITUS MODEL S06 1" GRID EGROGATE RETURN AIR GRILLE WITH OFF-WHITE FINISH AND DUCT CONNECTION. NECK SIZE AS INDICATED ON PLANS.
SWR	TITUS MODEL S06 1" GRID EGROGATE RETURN AIR GRILLE WITH OFF-WHITE FINISH AND DUCT CONNECTION. NECK SIZE AS INDICATED ON PLANS.
SMR	TITUS MODEL 272-F55 SIDEWALL SUPPLY REGISTER WITH OPPOSED BLADE VOLUME DAMPER AND MOUNTING FRAME. NECK SIZE AS INDICATED ON PLANS.
ITMS	TITUS MODEL CT-700-BF DOOR GRILLE. SIZE AS INDICATED.
SG	SPECIAL NOTE: BACK OF ALL CG'S AND RAC'S SHALL BE INSULATED WITH 1" THICK FIBERGLASS INSULATION WITH VAPOR BARRIER WHEN LOCATED IN AREAS WITH CEILING.
GN	GENERAL NOTE: TESTING AGENCY ACCEPTANCE SYMBOL.
AD	AIR DEVICES TO HAVE SURFACE OR LAYIN FRAMES AS REQUIRED BY CEILING CONSTRUCTION.

CONDENSATE WASTE SIZING

EQUIP. CAPACITY IN TONS	MIN. PIPE DIAMETER IN INCHES
21 - 40	1 1/4"
41 - 90	1 1/2"
91 - 125	1 3/4"
126 - 250	2"

CONDENSATE LINES NOTE

CONDENSATE SHALL BE COLLECTED AND DISCHARGED TO AN APPROVED PLUMBING FIXTURE OR DISPOSAL AREA. IF DISCHARGED INTO THE DRAINAGE SYSTEM EQUIPMENT SHALL DRAIN BY MEANS OF AN INDIRECT WASTE PIPE. THE WASTE PIPE SHALL HAVE A SLOPE OF NOT LESS THAN 1/4" INCH PER FOOT AND SHALL BE OF APPROVED CORROSION-RESISTANT MATERIAL, NOT SMALLER THAN THE OUTLET SIZE AS REQUIRED. CONDENSATE OR WASTE WATER SHALL NOT DRAIN OVER A PUBLIC WAY.

THERMOSTAT CONTROL NOTE

EACH HEATING AND COOLING SYSTEM SHALL HAVE AT LEAST ONE SOLID STATE PROGRAMMABLE THERMOSTAT. THE THERMOSTAT SHALL HAVE THE CAPABILITY TO SET BACK OR SHUT DOWN THE SYSTEM BASED ON THE DAY OF THE WEEK AND TIME OF DAY AND PROVIDE A READILY ACCESSIBLE MANUAL OVERRIDE THAT WILL RETURN TO THE PRESETBACK OR SHUTDOWN SCHEDULE WITHOUT REPROGRAMMING.

MECHANICAL SPECIFICATIONS

CODE COMPLIANCE: CONTRACTOR SHALL COMPLY WITH ALL NATIONAL, STATE AND LOCAL CODES. PROPOSED CONDITIONS: CONTRACTOR SHALL FIELD VERIFY ALL PROPOSED CONDITIONS PRIOR TO SUBMITTING BID. BY SUBMITTING BID, CONTRACTOR STATES THAT HE HAS EXAMINED ALL PROPOSED CONDITIONS IF CONTRACTOR ENCOUNTERS PROPOSED CONDITIONS WHICH NEED CLARIFICATION, CONTACT ENGINEER FOR REGULATION OR CLARIFICATION.

PERMITS AND FEES: CONTRACTOR SHALL OBTAIN ALL PERMITS AND PAY ALL FEES AND CHARGES REQUIRED. GUARANTEE AND WARRANTIES: ALL WORK PERFORMED UNDER THIS CONTRACT SHALL HAVE ONE (1) YEAR WRITTEN GUARANTEE FOR ALL MATERIALS AND WORKMANSHIP. ALL COMPRESSORS SHALL HAVE FIVE (5) YEAR FACTORY WARRANTY.

MATERIALS AND WORKMANSHIP: ALL MATERIALS SHALL BE NEW AND OF BEST CLASS QUALITY. NO "USED" MATERIALS WILL BE PERMITTED TO BE INSTALLED ON THIS PROJECT.

DUCTWORK: ALL DUCTWORK SHALL BE FABRICATED AND INSTALLED IN ACCORDANCE WITH THE LATEST S.M.A.C.N.A. MANUALS. ALL DUCT SIZES INDICATED ARE "FREE AREA" INSIDE REQUIREMENTS. ALL INTERIOR SUPPLY AND RETURN DUCTWORK SHALL BE SHEET METAL WITH 2" THICK R-8 EXTERNAL FIBERGLASS INSULATION WITH VAPOR BARRIER. ALL FLEXIBLE DUCT SHALL BE CLASS 1 FIBERGLASS FLEXIBLE AIR DUCT WITH A MAXIMUM LENGTH OF SIX (6) FEET, WHERE RUNOUT EXCEEDS THIS DISTANCE, PROVIDE ROUND SHEET METAL DUCT WITH 2" THICK R-8 EXTERNAL FIBERGLASS INSULATION WITH VAPOR BARRIER.

SEALING OF DUCTWORK: ALL DUCTWORK SHALL BE SEALED WITH A HIGH PRESSURE SEALANT. DUCTWORK SHALL BE TESTED IN ACCORDANCE WITH S.M.A.C.N.A. WITH A MAXIMUM LEAKAGE OF FIVE (5) L.P.M.P.M.P.M.

CONDENSATE DRAIN PIPING SHALL BE SCHEDULE #40 STEEL.

INSULATION: CONDENSATE DRAIN PIPING SHALL BE INSULATED WITH 3/4" THICK CLOSED CELL ELASTOMERIC INSULATION.

A/C EQUIPMENT: AIR CONDITIONING EQUIPMENT SHALL BE AS SCHEDULED ON THE DRAWINGS. SYSTEMS SHALL BE COMPLETE WITH FILTERS AND MOTOR STARTERS FOR ALL MOTORS.

EQUIPMENT ROOF CURBS: ALL EQUIPMENT ON ROOF SHALL BE SUPPORTED BY 14" HIGH INSULATED ROOF CURBS AND SUPPORTS INSTALLED LEVEL.

FANS: FANS SHALL BE AS SCHEDULED ON THE DRAWINGS. FANS SHALL BE COMPLETE WITH BACKDRIFT DAMPERS, BROSCREEN, MOTOR STARTERS, MOTOR DISCONNECTS, AND ROOF CURBS (WHERE FANS ARE ROOF MOUNTED).

CEILING AIR DEVICES: EACH A/C SYSTEM SHALL BE CONTROLLED BY A 7 DAY PROGRAMMABLE THERMOSTAT. EACH SYSTEM HANDLING 2000 CFM AND GREATER SHALL HAVE A SMOKE DETECTOR INSTALLED IN THE SUPPLY AIR DUCTWORK.

FLEX PIPING: FLEX PIPING SHALL BE METALBESTOS OR EQUAL DOUBLE WALL FLUE PIPE.

CEILING AIR DEVICES: AIR DEVICES SHALL BE AS SCHEDULED ON THE DRAWINGS. DEVICES SHALL BE COMPLETE WITH ALL MOUNTING HARDWARE REQUIRED FOR INSTALLATION.

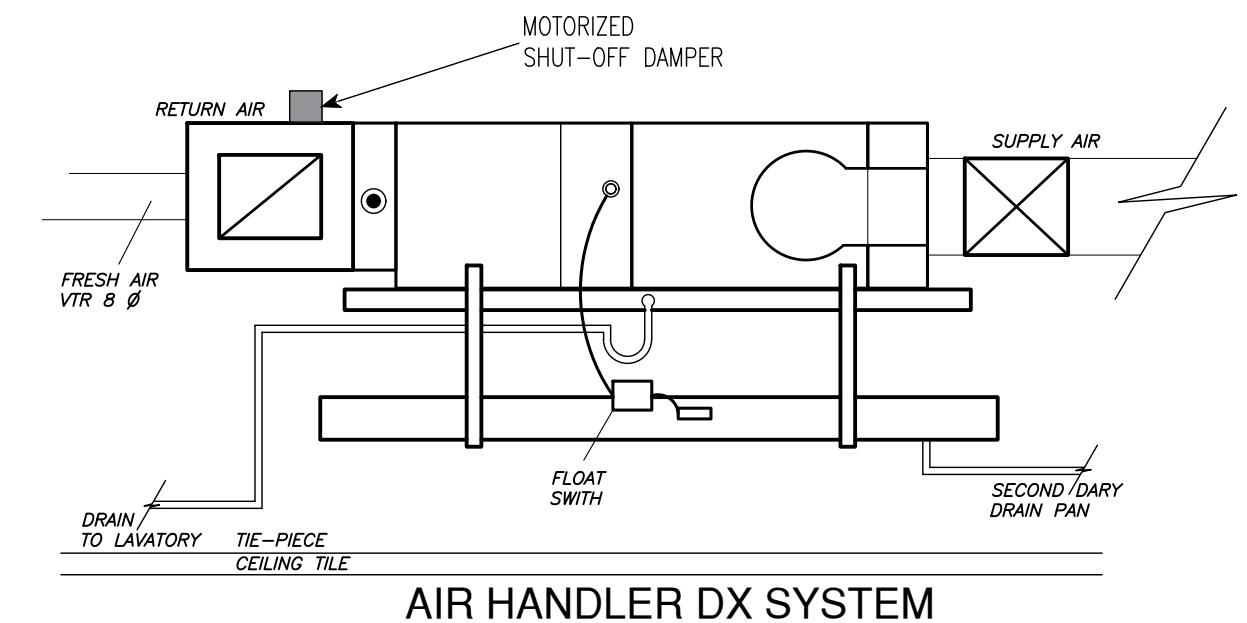
LOCATION OF AIR DEVICES: COORDINATE LOCATION OF ALL AIR DEVICES IN CEILING WITH LIGHTING FIXTURES. REFER TO ARCHITECTURAL REFLECTED CEILING PLANS FOR LOCATIONS IN CEILING.

DAMPERS: DAMPERS SHALL BE PROVIDED AT ALL BRANCH TAKE-OFFS FROM MAIN DUCTWORK AND AT EACH AIR DEVICE FOR SYSTEM BALANCING. DAMPERS AT DEVICES SHALL BE OF THE OPPOSED BLADE TYPE.

BALANCING AND TESTING: CONTRACTOR SHALL BALANCE THE SYSTEM UPON COMPLETION OF WORK. ANY DEFECTS OR DEFICIENCIES DISCOVERED AS A RESULT OF TESTS SHALL BE IMMEDIATELY REPAIRED AND TESTS SHALL BE REPEATED UNTIL THE TEST REQUIREMENTS ARE FULLY COMPLIED WITH. SUBMIT AIR BALANCE REPORT AT COMPLETION OF TESTING.

SUBMITTALS AND SUBSTITUTIONS: CONTRACTOR SHALL FURNISH SUBMITTAL DATA TO ENGINEER FOR APPROVAL ON ALL A/C EQUIPMENT, FANS, AIR DEVICES, ETC. PRIOR TO ORDERING ANY ITEMS. CONTRACTOR MAY OFFER SUBSTITUTIONS ON ITEMS FOR APPROVAL BY ENGINEER. SUBSTITUTIONS MUST BE EQUAL IN ALL RESPECTS TO ITEMS SCHEDULED OR SPECIFIED.

AS-BUILT DRAWINGS: CONTRACTOR SHALL FURNISH OWNER WITH COMPLETE SET OF AS-BUILT DRAWINGS AT COMPLETION OF PROJECT. ENGINEER WILL FURNISH CONTRACTOR ONE (1) CLEAN SET OF BLUELINE PRINTS FOR CONTRACTOR'S USE. CONTRACTOR SHALL LEGIBLY MARK THIS SET OF PRINTS WITH RED INK TO SHOW AS-BUILT CONDITIONS. CONTRACTOR SHALL MARK THESE DRAWINGS AS "AS-BUILT DRAWINGS" IN LOWER RIGHT HAND CORNER AND ADD THE COMPANY NAME AND TELEPHONE NUMBER.

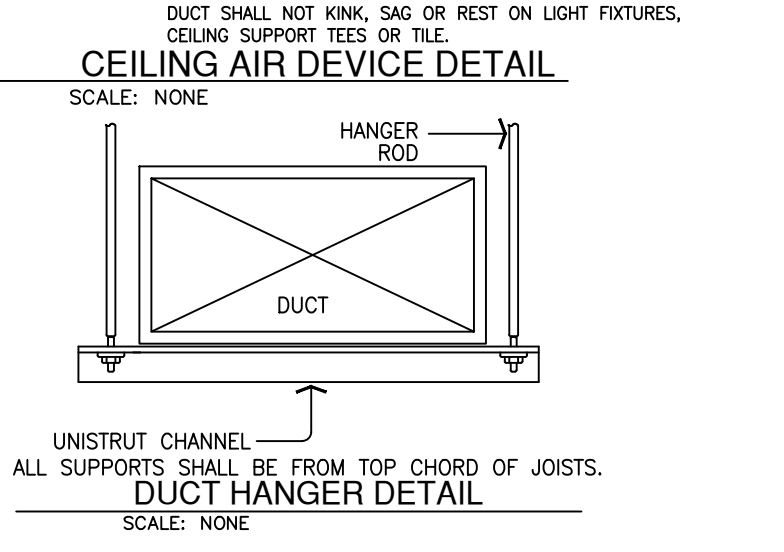
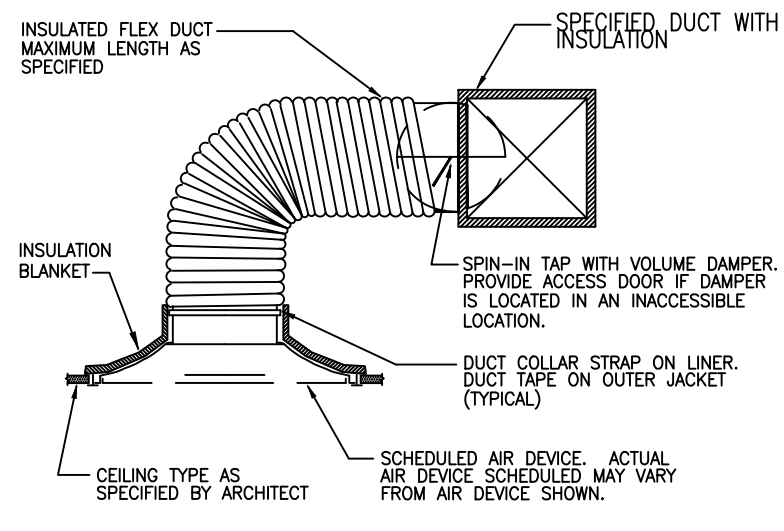
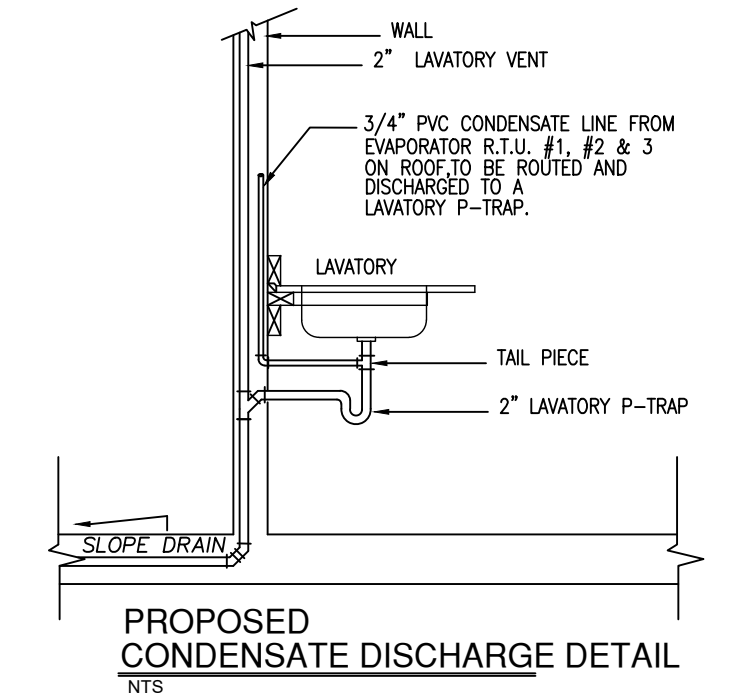


Important Note:
THIS BUILDING SHALL HAVE A KID MOTORIZED DAMPERS IN A/C MACHINE. BECAUSE OVER PASS 300 CFM

FLEX DUCT SIZE	CFM RANGE
6" DIA.	0 TO 120
8" DIA.	121 TO 230
10" DIA.	231 TO 500
12" DIA.	501 TO 500

SCHEDULE OF A/C UNITS

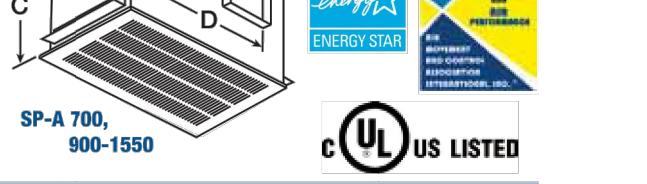
MARK	DESCRIPTION
AHU #1	TRANE MODEL YSC036A3RLA**C00044B005A7 PACKAGES COOLING UNIT WITH 8.3 KW ELECTRIC HEAT. NOMINAL COOLING OF 36,000 BTUH AT 95° AMBIENT.
3.0 TON	1200 CFM AT 0.6" E.S.P.; 240 CFM OUTSIDE AIR. AT 240/3 PH
1 UNIT	PROVIDE SMOKE DETECTOR BY FIRE ALARM SYSTEM MUST BE INSTALL A LEVEL FLOAT SWITCH MOD: FT-11 IN DRAIN PAN ELECTRICAL SHALL BE SINGLE POINT CONNECTION. UNIT SEER = 13 MINIMUM. REFRIGERANT TYPE = R-410A
A/C WINDOWS	AMANA PTAC MODEL PTH123G35AXXX PACKAGES COOLING UNIT WITH 3.5 KW ELECTRIC HEAT. NOMINAL COOLING OF 120,000 BTUH AT 95° AMBIENT.
12,000 BTU'S	290 CFM AT 0.6" E.S.P.; 58 CFM OUTSIDE AIR. AT 120/230/3 PH
40 UNITS	ELECTRICAL SHALL BE SINGLE POINT CONNECTION. UNIT SEER = 13.0 MINIMUM. REFRIGERANT TYPE = R-410A



Model SP-A Premium Ceiling Fan



Model SP-A Dimensions					
Model	A	B	C	D	E
50, 70, 90	13 1/4	10 1/2	9	6	15 1/2
110, 125, 150	13 1/4	10 1/2	9	8	15 1/2
200, 250, 290, 350	14	11 1/4	11 1/4	8	18 1/4 x 18 1/4
410, 510	18	14 1/4	14 1/4	10	18 1/4 x 18 1/4
700	23 1/4	11 1/4	11 1/4	10 1/2	25 1/4 x 13 1/4
710, 780	18	14 1/4	14 1/4	10	18 1/4 x 16 1/4
900, 1050, 1410, 1550	23 1/4	14 1/4	14 1/4	10 1/2	25 1/4 x 16 1/4



Model	Energy Star	RPM	Amps*	Watts	0	0.1	0.125	0.25	0.375	0.5	0.625	0.75	0.875	1
SP-A50...s		700	0.31	18.3	CFM 76	0.1	0.125	0.25	0.375	0.5	0.625	0.75	0.875	1
SP-A70...s		850	0.27	20.3	CFM 83	0.1	0.125	0.25	0.375	0.5	0.625	0.75	0.875	1
SP-A90...s		900	0.34	29.4	CFM 99	0.1	0.125	0.25	0.375	0.5	0.625	0.75	0.875	1
SP-A110...s		950	0.58	48.7	CFM 119	0.1	0.125	0.25	0.375	0.5	0.625	0.75	0.875	1
SP-A125...s		1100	0.62	52.5	CFM 136	0.1	0.125	0.25	0.375	0.5	0.625	0.75	0.875	1
SP-A190...s		1400	1.30	113	CFM 216	0.1	0.125	0.25	0.375	0.5	0.625	0.75	0.875	1
SP-A300...s		900	0.43	48.3	CFM 247	0.1	0.125	0.25	0.375	0.5	0.625	0.75	0.875	1
SP-A250...s		1000	0.77	83.1	CFM 272	0.1	0.125	0.25	0.375	0.5	0.625	0.75	0.875	1
SP-A290...s		1050	0.72	80.7	CFM 315	0.1	0.125	0.25	0.375	0.5	0.625	0.75	0.875	1
SP-A390...s		1350	1.34	135	CFM 445	0.1	0.125	0.25	0.375	0.5	0.625	0.75	0.875	1
SP-A410...		1000	1.74	121	CFM 443	0.1	0.125	0.25	0.375	0.5	0.625	0.75	0.875	1
SP-A510...		1170	3.30	224	CFM 557	0.1	0.125	0.25	0.375	0.5	0.625	0.75	0.875	1
SP-A700...		1000	3.20	350	CFM 752	0.1	0.125	0.25	0.375	0.5	0.625	0.75	0.875	1
SP-A710...		1080	4.40	285	CFM 757	0.1	0.125	0.25	0.375	0.5	0.625	0.75	0.875	1
SP-A780...s		1600	3.30	348	CFM 752	0.1	0.125	0.25	0.375	0.5	0.625	0.75	0.875	1
SP-A900...		950	4.00	285	CFM 955	0.1	0.125	0.25	0.375	0.5	0.625	0.75	0.875	1
SP-A1050...		1095	6.30	420	CFM 1125	0.1	0.125	0.25	0.375	0.5	0.625	0.75	0.875	1
SP-A1410...		1450	7.40	796	CFM 1455	0.1	0.125	0.25	0.375	0.5	0.625	0.75	0.875	1
SP-A1550...s		1610	8.80	818	CFM 1607	0.1	0.125	0.25	0.375	0.5	0.625	0.75	0.875	1

LMC 2012 Amendments TABLE 4.2
Outdoor Air Analysis Requirements For Ventilation

HOUSE'S MANAGER

AHU #	5	TON.	400	2000	CFM	0.2	%	400	CFM
TOTAL PROVIDED									400
TOTAL MINIMUM OUTSIDE AIR REQUIRED									250
TOTAL OUTSIDE AIR PROVIDED									400

No. Room	DESCRIPTION AREA	SQ. FT.	OUTDOOR VENTILATION	CFM REQUIRED BY AREA
101	LOBBY	136	0.05	6.8
102	BREAKFAST	205	0.18	36.9
103	RECEPTION	85	0.05	4.25
104	RESTROOM	1	50.00	50
105	PANTRY	0	0.00	0
106	LIVING AREA	283	0.18	50.94
107	DINING AREA	184	0.18	33.12
108	KITCHEN	102	0.18	18.36
109	BATHROOM 1	1	50.00	50
110	MASTER BEDROOM	211	0.08	16.88
111	LAUNDRY	406	0.05	20.3
112	STAIRS	103	0.05	5.15
113	BEDROOM 1	202	0.08	16.16
114	BATHROOM 2	1	50.00	50
115	BEDROOM 2	202	0.08	16.16
116	CLOSET	33	0.05	1.65
117	BEDROOM 3	0	0.00	0
118	CLOSET	15	0.05	0.75
119	CLOSET	23	0.05	1.15
120	STORAGE	406	0.05	20.3
TOTAL REQUIRED				250
TOTAL MINIMUM OUTSIDE AIR REQUIRED				250
TOTAL OUTSIDE AIR PROVIDED				400