

# THE PLAZA CONDO

LOCATED IN THE HEART OF DOWNTOWN

SALE PRICE: \$445,000

2,960 RSF AVAILABLE FOR SALE

---

FOUNDRY  
COMMERCIAL



## CLASS-A DEVELOPMENT

The Plaza Condo is located in the heart of Orlando’s Central Business District. There are plenty of restaurants within walking distance as well as access to businesses located in Downtown Orlando.

SUITE	RSF
900	2,960

## PROPERTY FEATURES

- Double door entry access off main lobby
- Balcony area with excellent views of Downtown Orlando
- 24 hour access
- Parking available at an additional cost
- Executive Offices with floor to ceiling windows
- Breakroom with seating area located within the suite

FOR MORE INFORMATION, PLEASE CONTACT:

GABE DE JESUS | 407.650.1501  
Partner  
Gabe.DeJesus@foundrycommercial.com  
Licensed Real Estate Broker

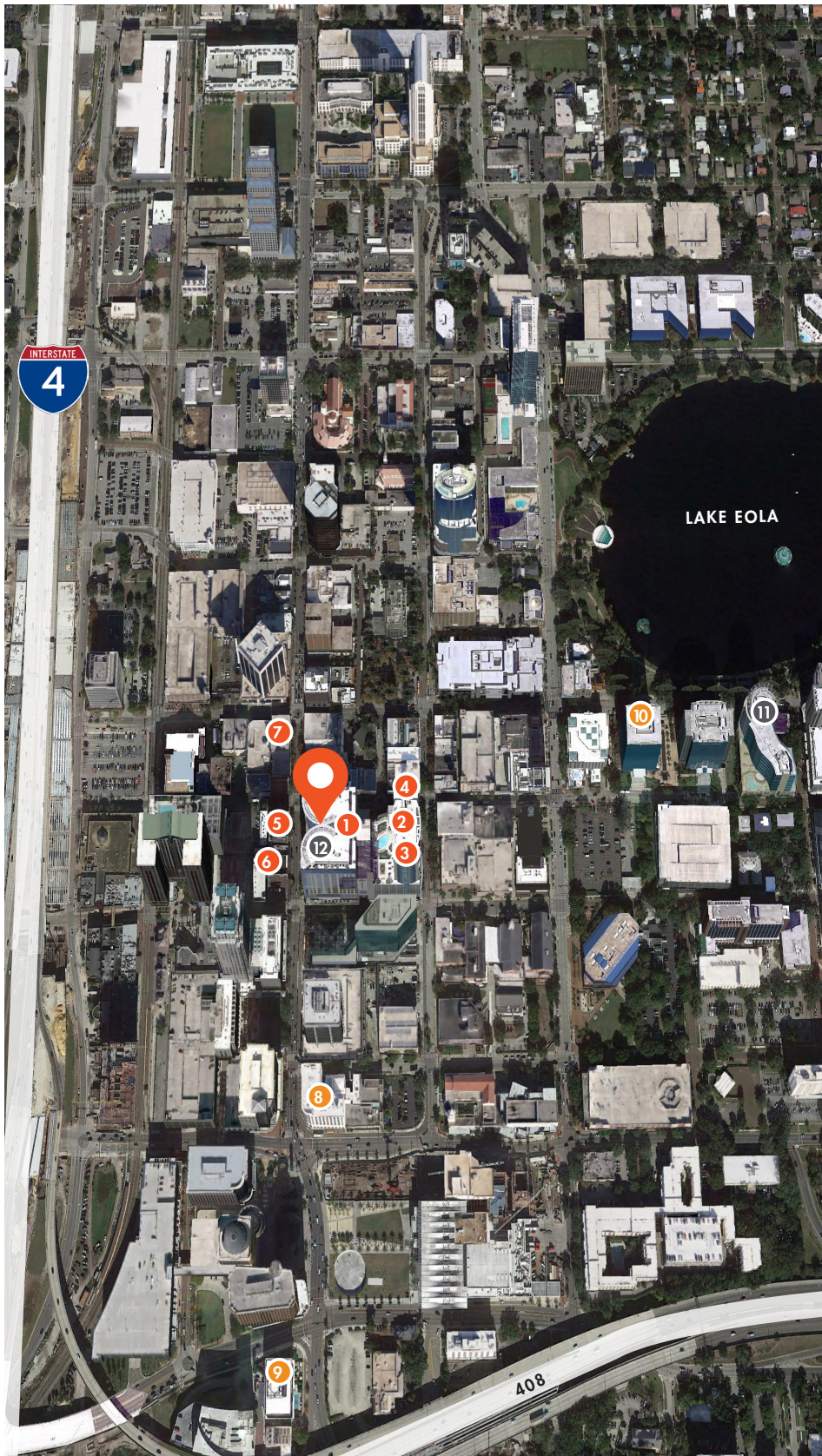




**BREAKROOM**



**BALCONY WITH VIEWS OF DOWNTOWN ORLANDO**



## LOCATION

The Plaza Condo is located in Downtown Orlando with many accessible dining and retail options within walking distance.

## WALKABLE DINING

- 1 Bento Cafe
- 2 Market on Magnolia
- 3 Le Gourmet Break
- 4 Jimmy Hula's
- 5 Gitto's Pizza
- 6 Kres Chophouse
- 7 Mecatos Bakery & Cafe

## HOTELS

- 8 Grand Bohemian Hotel Orlando
- 9 Aloft Orlando Downtown
- 10 Embassy Suites by Hilton

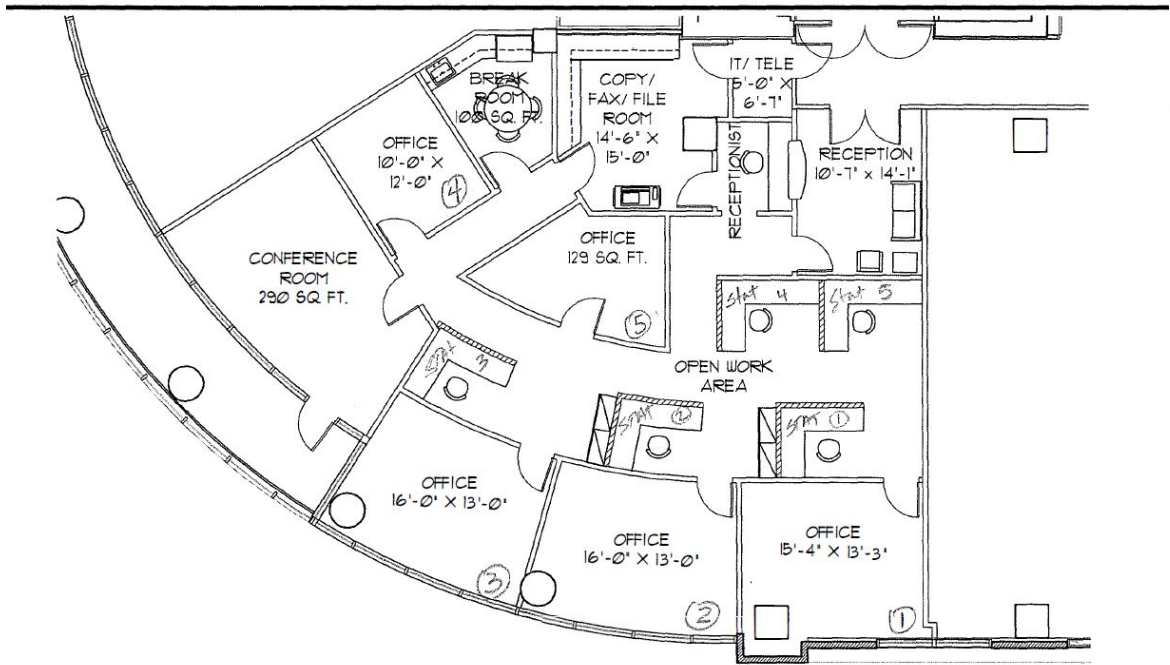
## AMENITIES

- 11 Publix
- 12 Cobb Plaza Cinema Cafe

# NINTH FLOOR

SUITE 900

2,960 SF AVAILABLE



Although the information contained herein was provided by sources believed to be reliable, Foundry Commercial makes no representation, expressed or implied, as to its accuracy and said information is subject to errors, omissions or changes.

FOR MORE INFORMATION, PLEASE CONTACT:

GABE DE JESUS | 407.650.1501

Partner

Gabe.DeJesus@foundrycommercial.com

Licensed Real Estate Broker

