

BAYSIDE REALTY PARTNERS PRESENTS

433 Airport Boulevard Burlingame, California

67,000 SF Multi-Tenant Building Located on San Francisco Bay

NOW OFFERING
BROKER
COMMISSION
\$3.00 per rentable sq ft
per year
New Leases Only



TRASK LEONARD
President and CEO
650.533.2591

TLeonard@baysiderp.com
DRE#01152101

IAN CALVELLO
Senior Property Director
650.282.4621

ICalvello@baysiderp.com
DRE#01713240

FRANCISCO LEON
Senior Property Director
650.522.0993

FLeon@baysiderp.com
DRE#01875946


BAYSIDE
REALTY PARTNERS
MEDICAL/DENTAL PROPERTY SPECIALISTS

433 Airport Boulevard Burlingame, California

LOCATION

- Close to SFO and downtown Burlingame, adjacent to US 101
- Close proximity to major hotels and many fine restaurants and eating establishments



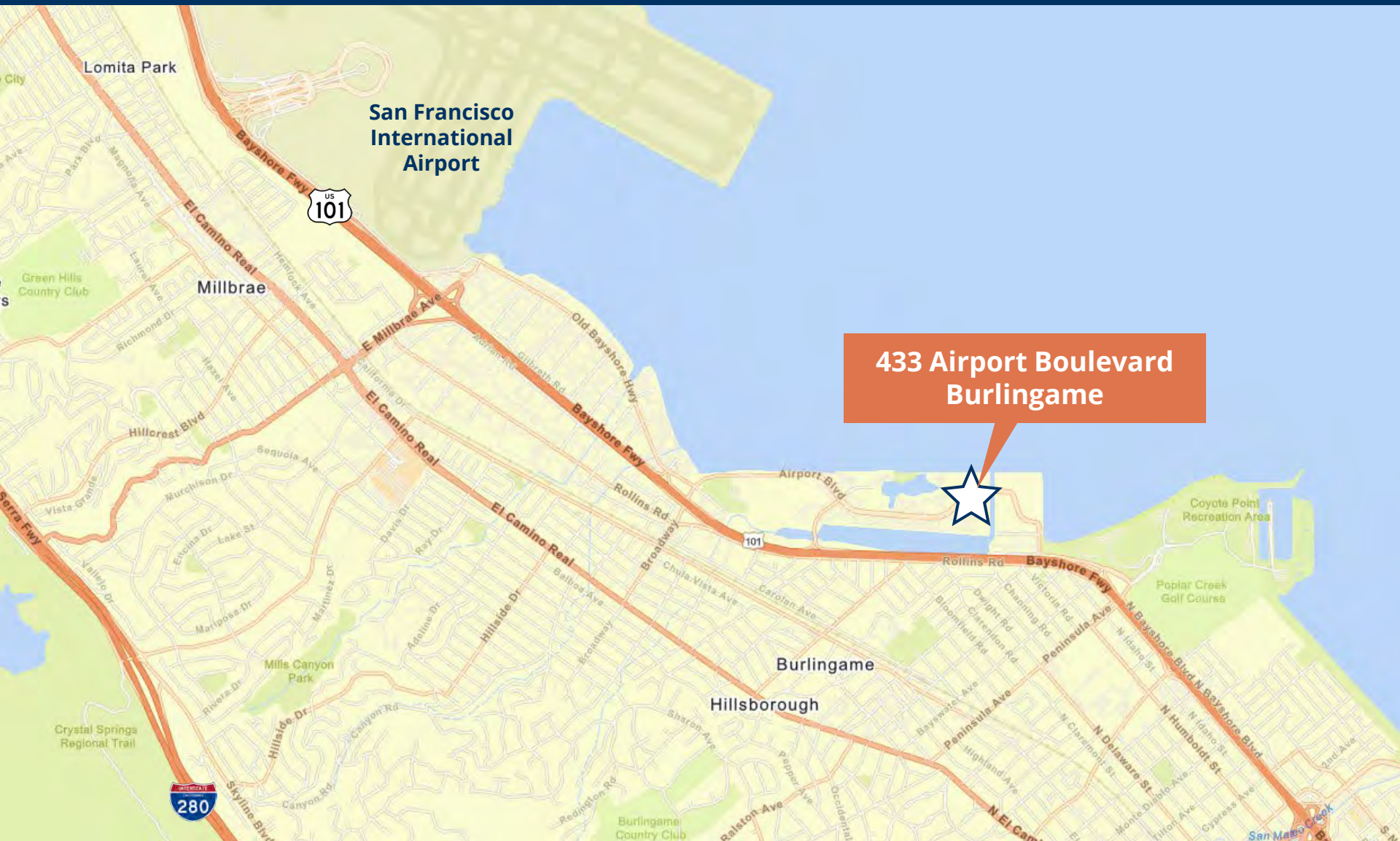
BUILDING

- Spectacular views of the bay
- 67,000 SF multi-tenant building located on beautiful San Francisco Bay
- 5 story, Class B building specializing in well-managed smaller spaces
- On-site conference room, kitchenette and locker room with shower. Unobstructed bay views
- Covered and surface parking, 4 spaces per 1,000 sf
- Fiber served

433 Airport Boulevard Burlingame, California



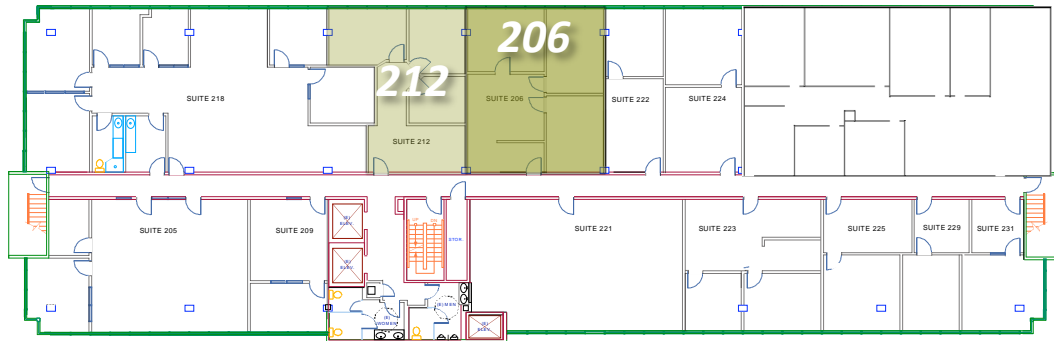
433 Airport Boulevard Burlingame, California



433 Airport Boulevard
Burlingame

433 Airport Boulevard Burlingame, California

SAN FRANCISCO BAY VIEW



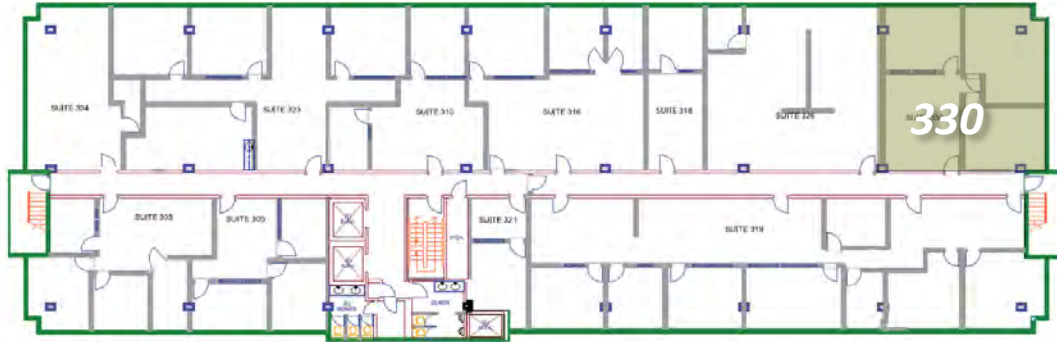
SECOND FLOOR

Suite 206 1,095 RSF
3 offices with reception area

Suite 212 940 RSF
Two window offices. One interior office, reception.

433 Airport Boulevard Burlingame, California

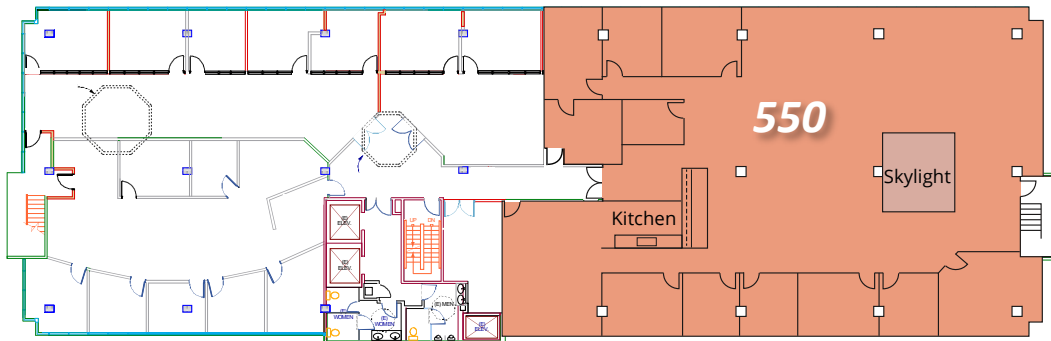
SAN FRANCISCO BAY VIEW



THIRD FLOOR

Suite 330 1,251 RSF
Corner suite with 3 private offices, reception or open area

SAN FRANCISCO BAY VIEW



FIFTH FLOOR

Suite 550 7,868 RSF
Best views of San Francisco Bay in Burlingame!
Top floor, expansive views of SFO and shoreline.
11 offices, full kitchen, skylight. Previously built for tech tenant with modern touches

Meet Your Expert Team



TRASK LEONARD

President and CEO

650.533.2591

TLeonard@baysiderp.com

DRE#01152101



IAN CALVELLO

Senior Property Director

650.282.4621

ICalvello@baysiderp.com

DRE#01713240



FRANCISCO LEON

Senior Property Director

650.522.0993

FLeon@baysiderp.com

DRE#02230832

DOMINANT. EXPERT. INFLUENTIAL.

BAYSIDE REALTY PARTNERS

The preeminent provider of management, leasing, construction management and accounting services for healthcare properties.



MARKET LEADER

- Leasing & Property Management
- Investment Sales
- Tenant Representation
- Construction Management
- Property Repositioning



INFLUENTIAL NETWORK

- Institutional Investors
- Healthcare Systems and Healthcare Districts
- Physicians & Districts
- Private Investors



DOMINANT FOOTPRINT

- 2 million SF leased & managed
 - 50+ MOB portfolio
 - 10,000-240,000 SF
 - 500,000 SF portfolio
- San Francisco's largest MOBs
- 950+ leases executed
- 500+ medical and dental tenants

DOMINANT. EXPERT. INFLUENTIAL.