



FOR LEASE

BE BALDWIN EAST A COMMERCIAL & LIGHT INDUSTRIAL PARK

100,000 SF TOTAL

Baldwin East is a 12 ½ acre Commercial and Light Industrial Park located just a short distance from I-94 in Baldwin, Wisconsin. The property consists of the former Dairyland Power Building, which is a Multi-Tenant 40,000 SF Building, along with a 60,000 SF Multi-Tenant Office/Warehouse Building.



**OFFICE/SHOWROOM
1ST LEVEL**

- Office & Showroom Space
- Warehouse & Production Space
- Outdoor Storage
- Dock & Drive-In Doors
- Heavy Three Phase Power



**ELEVATOR SERVING
2ND LEVEL**

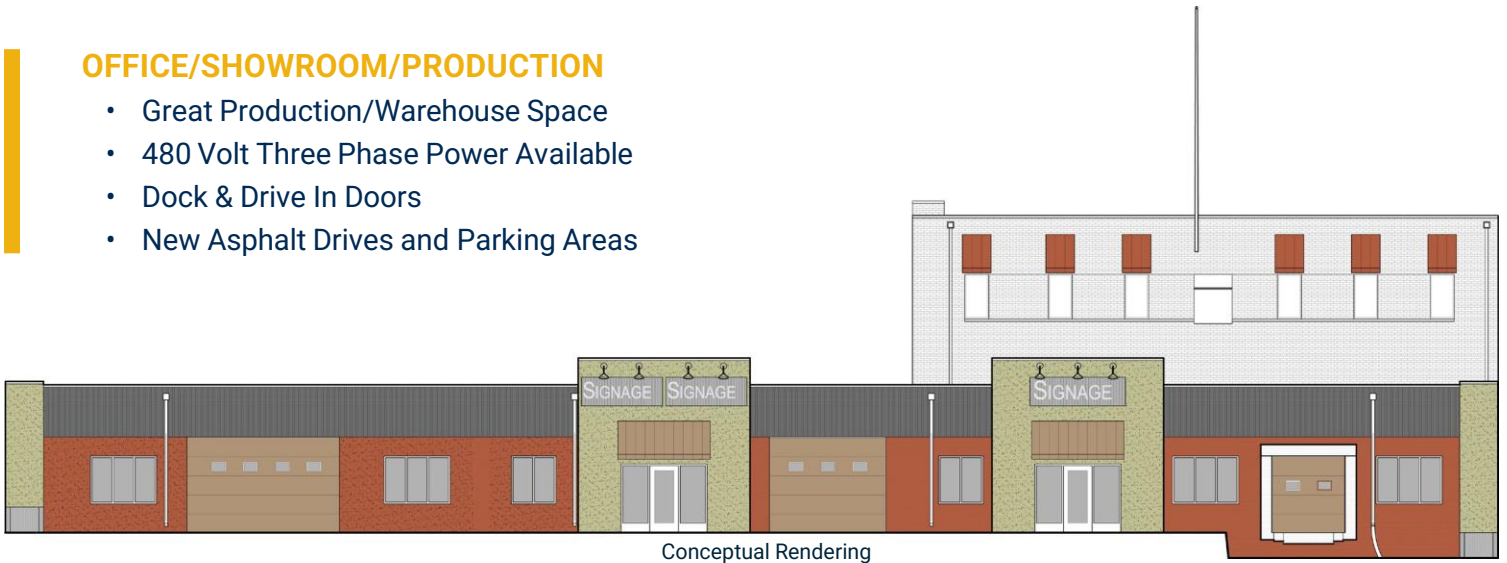


FOR MORE INFORMATION CONTACT:
Kevin J. LaCasse | 651.216.4858 | klacasse@greystone-commercial.com

DAIRYLAND BUILDING

OFFICE/SHOWROOM/PRODUCTION

- Great Production/Warehouse Space
- 480 Volt Three Phase Power Available
- Dock & Drive In Doors
- New Asphalt Drives and Parking Areas



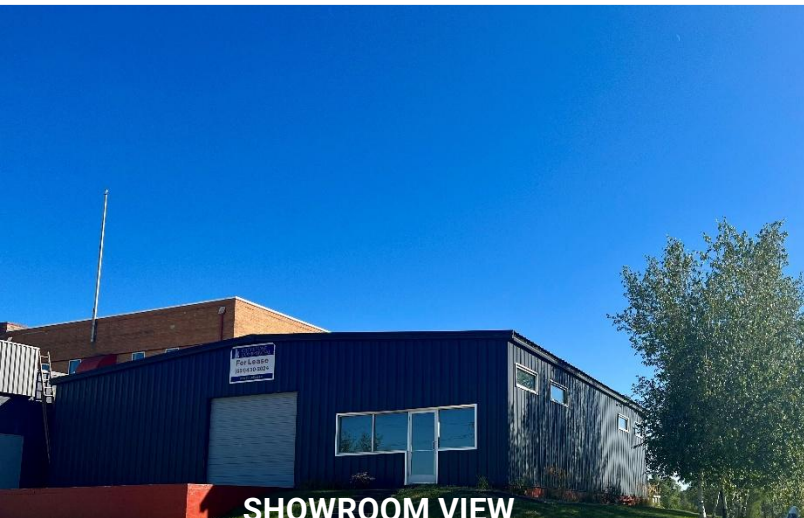
DAIRYLAND SHOWROOM

SHOWROOM/PRODUCTION/WAREHOUSE

- Exterior Improvements Coming Soon
- Newly Insulated Throughout
- High Ceiling & Open Floor Plan
- Interior & Exterior Dock Doors



Conceptual Rendering



SHOWROOM VIEW



SHOWROOM/WAREHOUSE



WEST SIDE LOADING DOCKS



COMMON DOCK AREA

60,000 SF BUILDING

OFFICE/SHOWROOM/WAREHOUSE

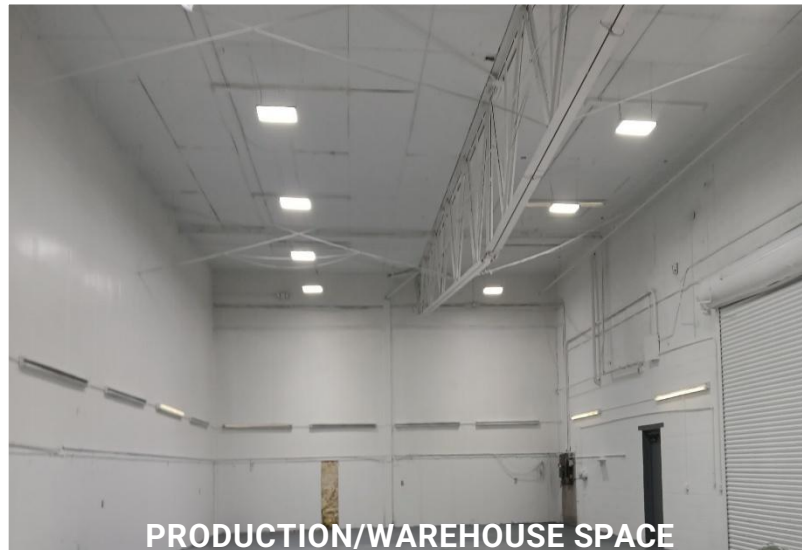
- 927 SF & Up
- 480 Volt Three Phase Power
- Dock & Drive In Doors
- New Asphalt Drives and Parking
- Additional Windows Coming
- LED Lighting



Conceptual Rendering



EAST SIDE VIEW



PRODUCTION/WAREHOUSE SPACE



TENANT ENTRANCE WITH SIGNAGE



ADDITIONAL PARKING