

FOR LEASE

# 20 Selig Drive

ATLANTA, GA 30336



±2.82 ACRES OF FULLY FENCED, LIT OUTSIDE STORAGE



FOR MORE  
INFORMATION:

**CONNOR WINKLER, SIOR**  
*Executive VP / Principal*  
cwinkler@lee-associates.com  
O: 404.442.2803

OWNED & MANAGED BY:

**B&D**  
HOLDINGS

**LEE &  
ASSOCIATES**  
COMMERCIAL REAL ESTATE SERVICES

# Property Highlights

## PROPERTY SIZE

± 2.82 AC

## ZONING

M-2 Zoning (Heavy Industrial)

## SUBMARKET

I-20 West / Fulton Industrial

## OUTSIDE STORAGE

- Perimeter fencing
- Lit
- Crushed concrete



FOR MORE  
INFORMATION:

**CONNOR WINKLER, SIOR**

*Executive VP / Principal*

[cwinkler@lee-associates.com](mailto:cwinkler@lee-associates.com)

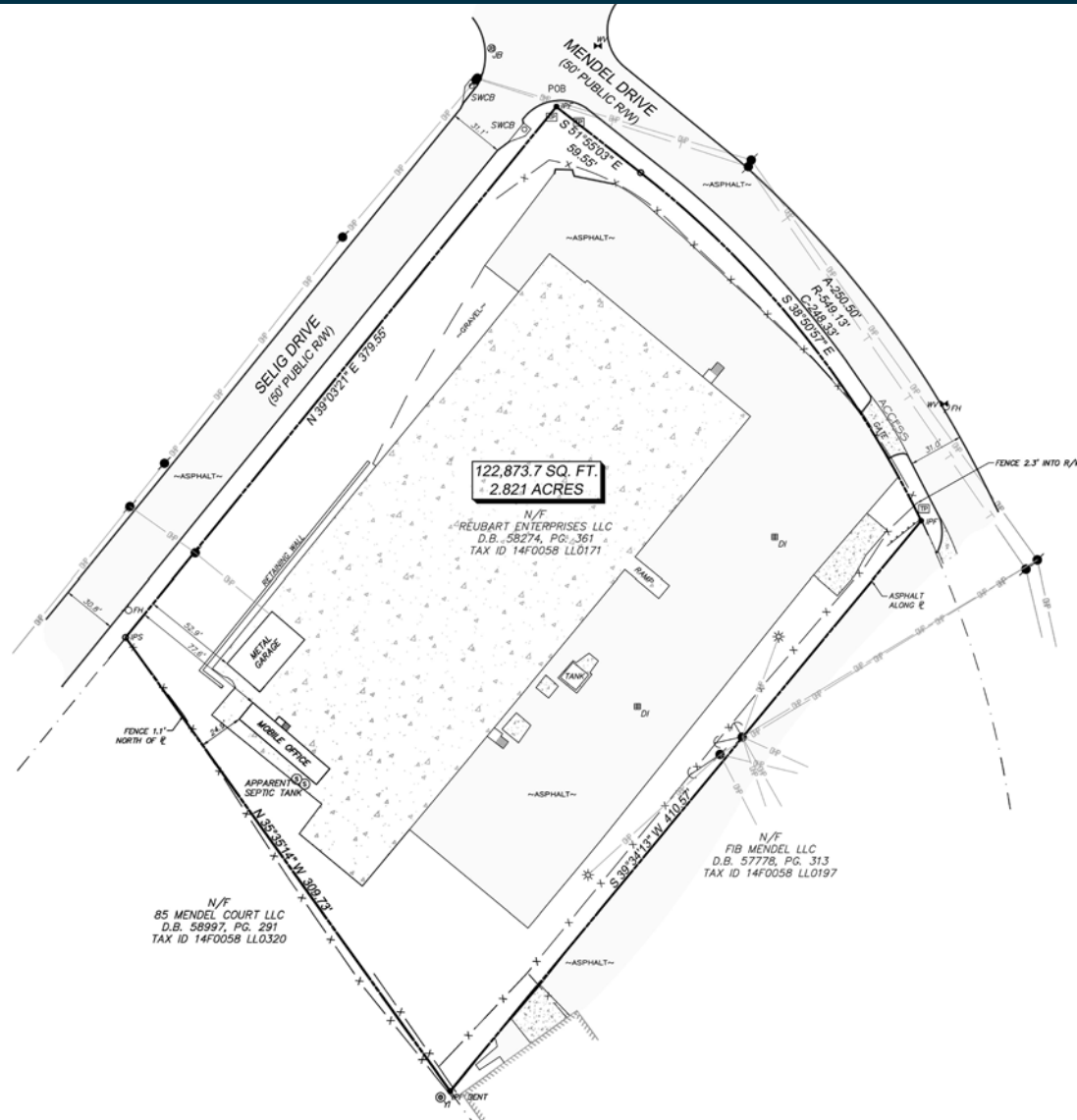
O: 404.442.2803

# Property Survey

● Location Highlights

● Property Survey

● Property Summary



FOR MORE  
INFORMATION:

**CONNOR WINKLER, SIOR**  
Executive VP / Principal  
cwinkler@lee-associates.com  
O: 404.442.2803

OWNED & MANAGED BY:


**B&D**  
HOLDINGS

**LEE & ASSOCIATES**  
COMMERCIAL REAL ESTATE SERVICES


# Location Highlights


## KEY DISTANCES

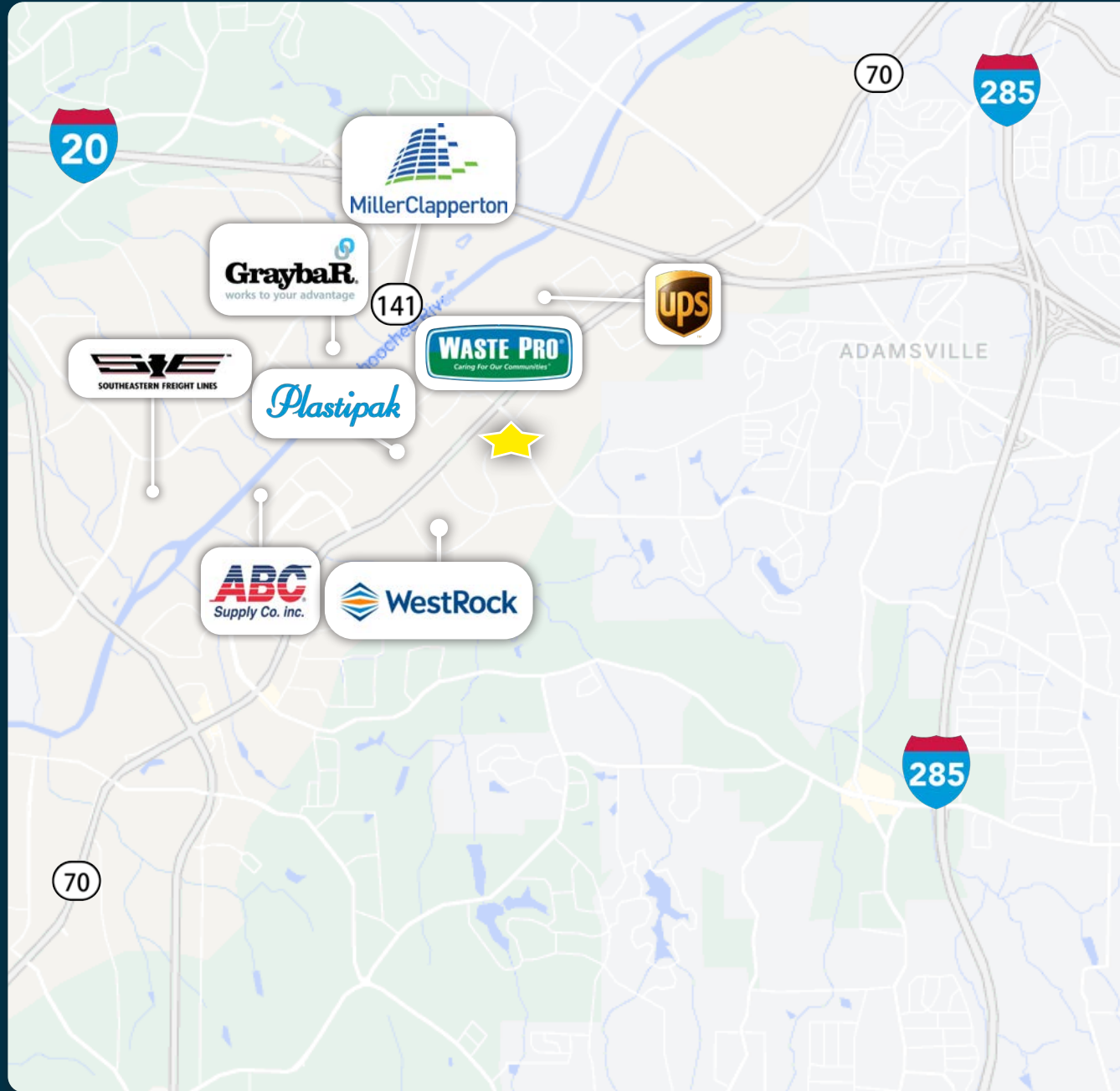
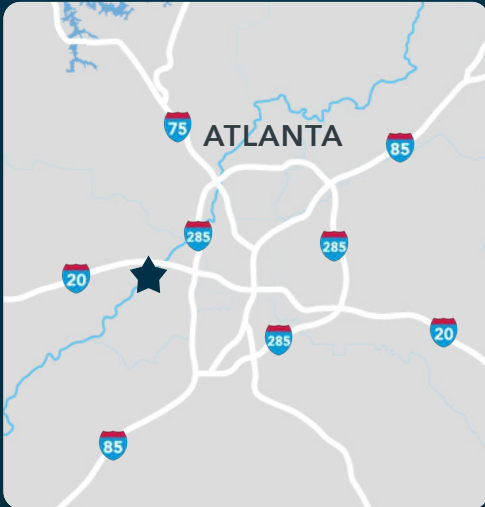
★ 20 Selig Drive

 1.4 miles

 3.5 miles

 15.5 miles to Hartsfield-Jackson Atlanta International Airport

 259 miles from Port of Savannah



FOR MORE INFORMATION:

**CONNOR WINKLER, SIOR**  
Executive VP / Principal  
cwinkler@lee-associates.com  
O: 404.442.2803

OWNED & MANAGED BY:  
**B&D**  
HOLDINGS

**LEE & ASSOCIATES**  
COMMERCIAL REAL ESTATE SERVICES