

Available for lease!

1652-1656 Oak Street
Bakersfield, California 93301



DAVID MALING
Executive Vice President
213.453.1770 call or text
dmaling@naicapital.com
License No. 01139115

NAI Capital
Commercial Real Estate Services, Worldwide



Leasing terms

SF AVAILABLE: 1,372 SF

ASKING RENT: \$1.25

TERM: Modified Gross

DATE AVAILABLE: Available



HIGHLIGHTS

- Unit 1656-C: ±1,372 SF space
- Unit 1656-D: ±1,372 SF space
- Great opportunity for various retail including pet services, beauty, health, and more!
- Ample parking (5.22/1,000 SF)
- Customizable interiors

Location overview

Demographics (2 mile radius)

40,236

Population

14,609

Households

62,049

Employees

\$60,510

Average household income

54%

Renter occupied

7,821

Businesses

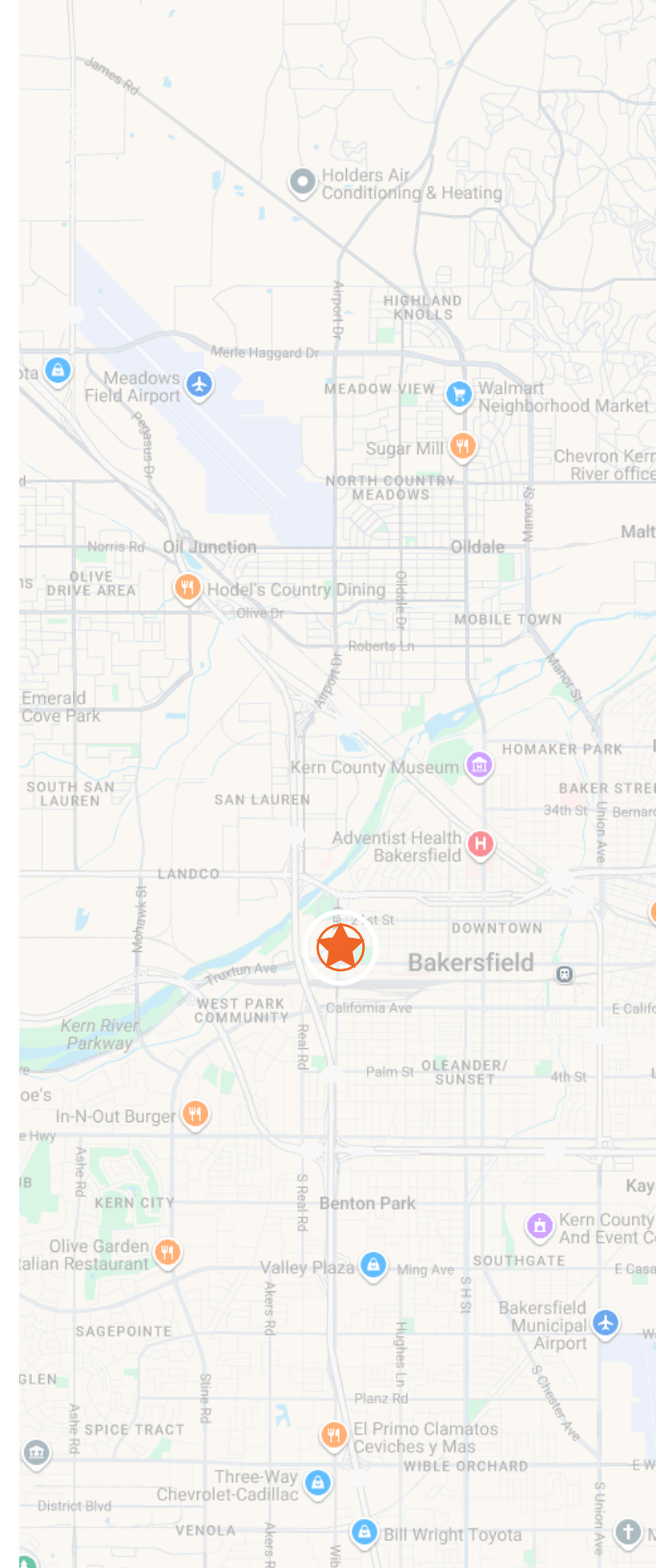
About Bakersfield, California

Bakersfield is a city in and the county seat of Kern County, California, United States. The city covers about 151 sq mi near the southern end of the San Joaquin Valley, which is located in the Central Valley region.

Bakersfield's population as of the 2020 Census was 403,455, making it the 47th-most populous city in the United States and the 9th-most populous in California. The Bakersfield–Delano Metropolitan Statistical Area, which includes all of Kern County, had a 2020 census population of 909,235, making it the 62nd largest metropolitan area in the United States.

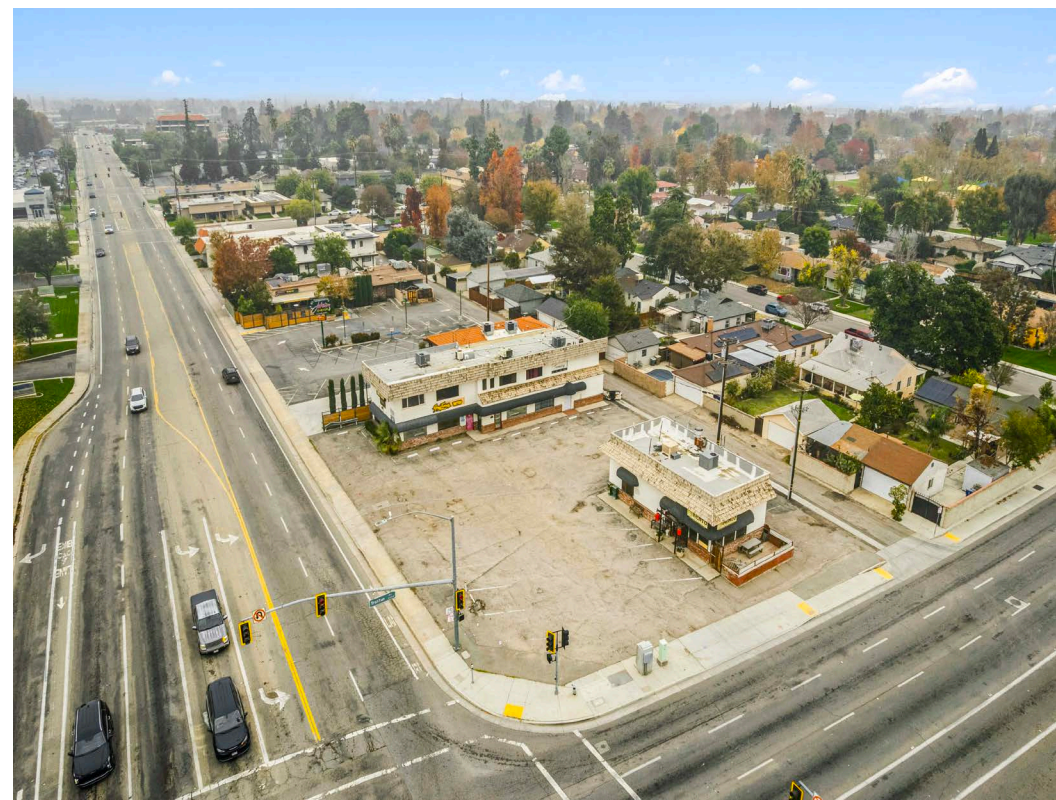
Bakersfield is a significant hub for both agriculture and energy production. Kern County is California's most productive oil-producing county and the fourth most productive agricultural county (by value) in the United States. Industries in and around Bakersfield include natural gas and other energy extraction, mining, petroleum refining, distribution, food processing, and corporate regional offices.

source: https://en.wikipedia.org/wiki/Bakersfield,_California



Property photos







David Maling
Executive Vice President
213.53.1770 call or text
dmaling@naicapital.com
License No. 01139115

Information contained herein was obtained from sources deemed reliable and, while thought to be correct, have not been verified. NAI Capital Commercial does not guarantee the accuracy or completeness of the information presented, nor assumes any responsibility or liability for any errors or omissions therein.

