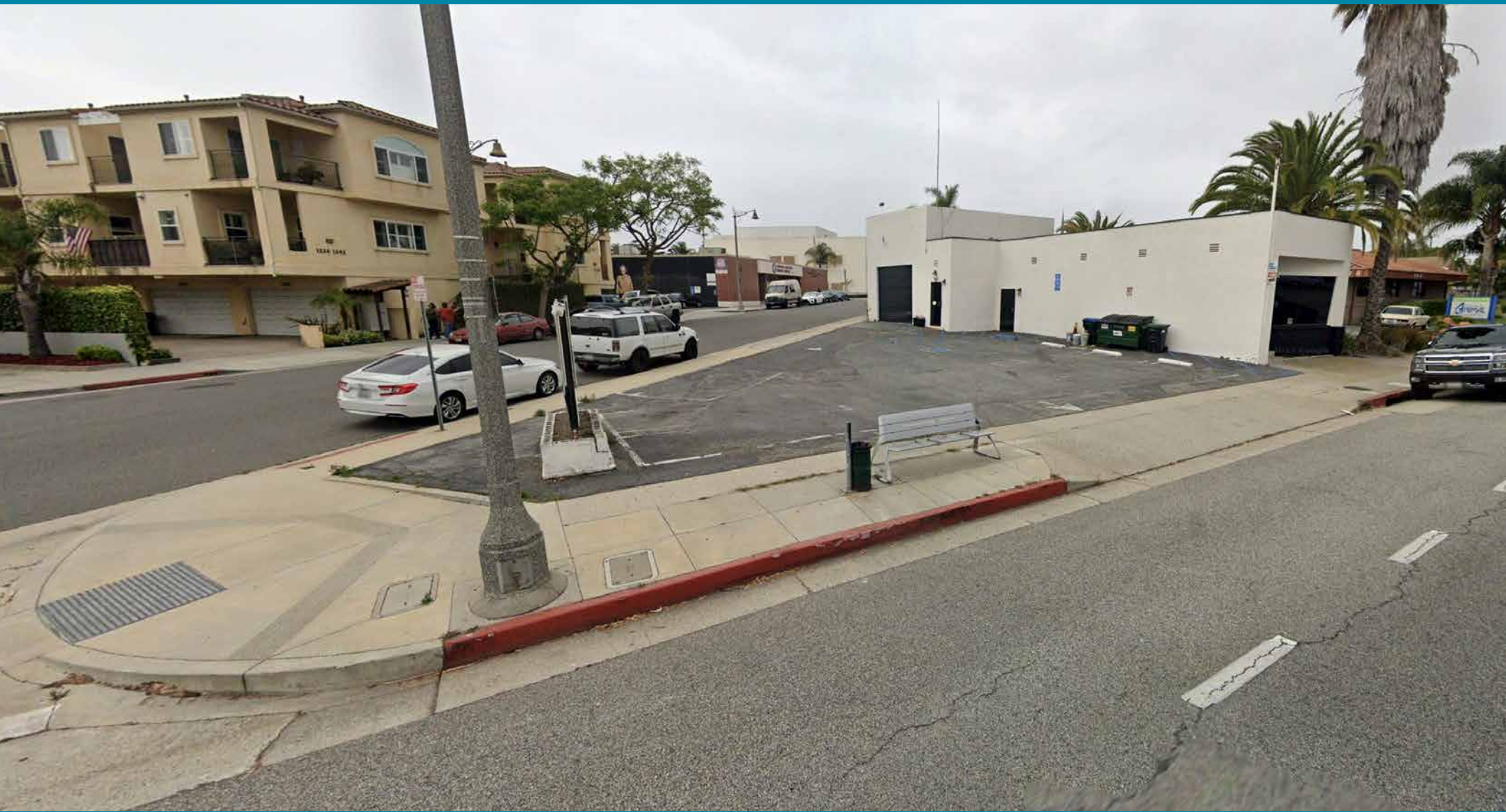


FOR SALE

MIXED-USE RETAIL OR INDUSTRIAL PROPERTY



±2,343 SF Building on ±4,637 SF of Land
2068 Torrance Blvd, Torrance, CA 90501

MAJOR PROPERTIES
REAL ESTATE
Commercial • Industrial • Multi-Family

2068 TORRANCE BLVD TORRANCE, CA 90501

Property Details

Building Area: ±2,343 SF

Land Area: ±4,637 SF

Stories: One

Year Built: 1947

Ground Level Loading Doors: 2

Parking: ±7 Surface Spaces

Zoning: TODC-CTR

APN: 7355-026-032

Traffic Count: 33,204 Vehicles Per Day (2025)

Property Highlights

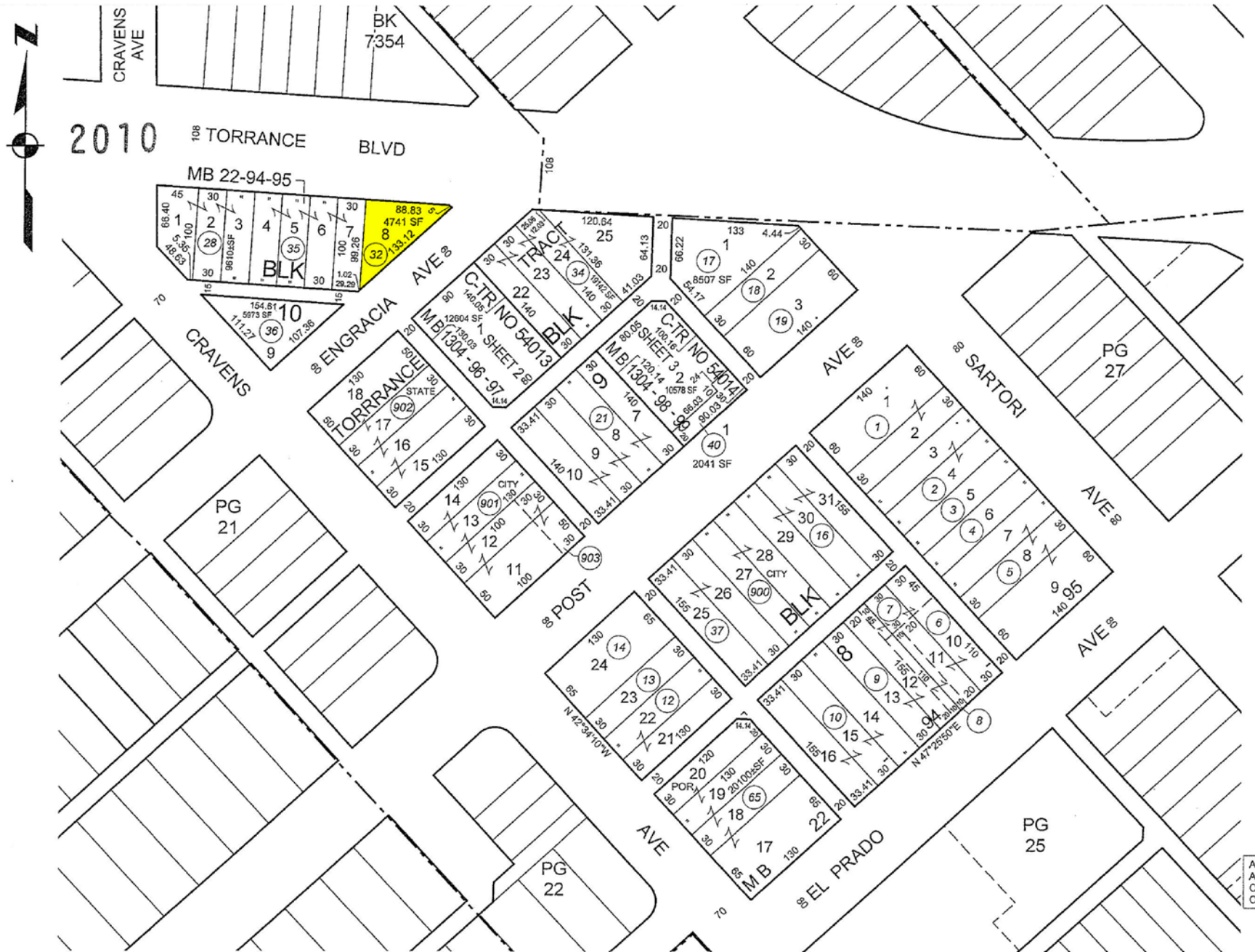
- Multi-use retail or industrial property
- Prime owner-user purchase opportunity
- Many possible uses!
- Ideal for any retail, furniture, antiques, music/recording studio, fitness, auto related, creative office or warehouse applications
- Heavy traffic location at the southwest corner of Torrance Blvd and Engracia Ave
- Fantastic exposure with excellent signage
- Includes ±7 surface parking spaces
- 2 roll-up ground level loading doors



Asking Price: \$1,250,000 (\$533.50 Per SF)



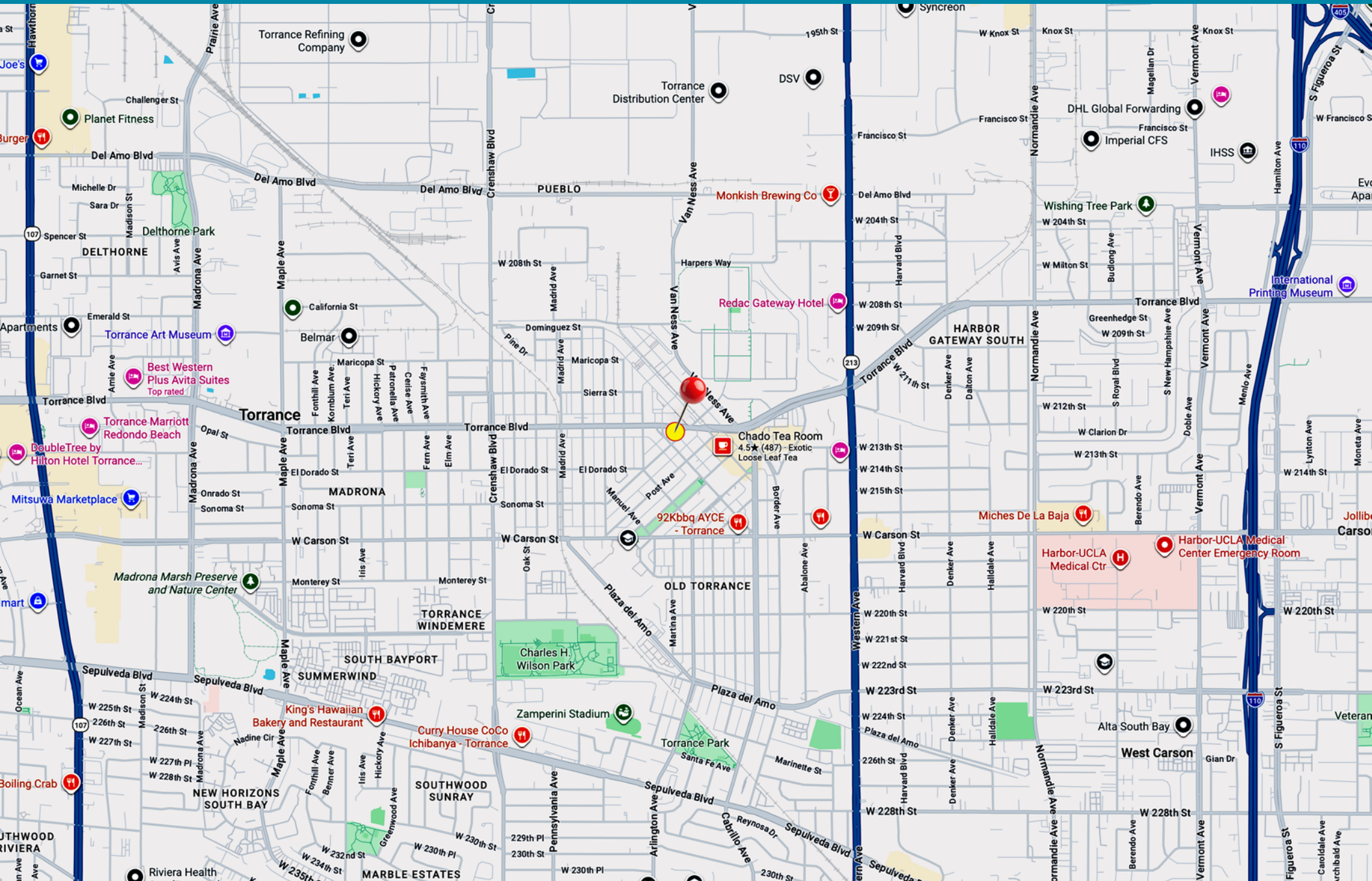
PLAT MAP



AERIAL PHOTO

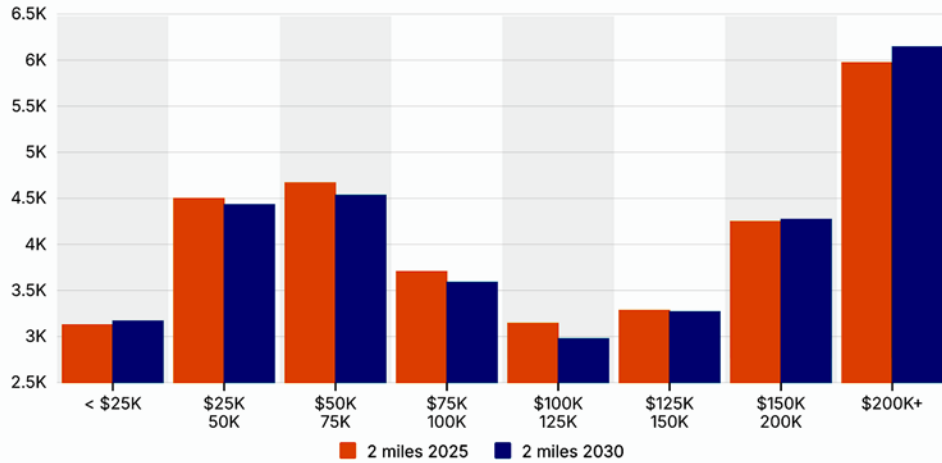


AREA MAP

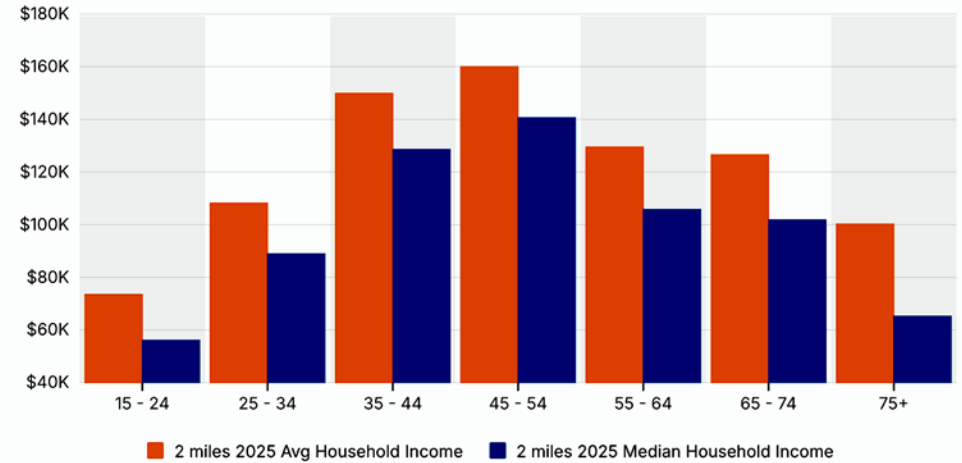


NEIGHBORHOOD DEMOGRAPHICS

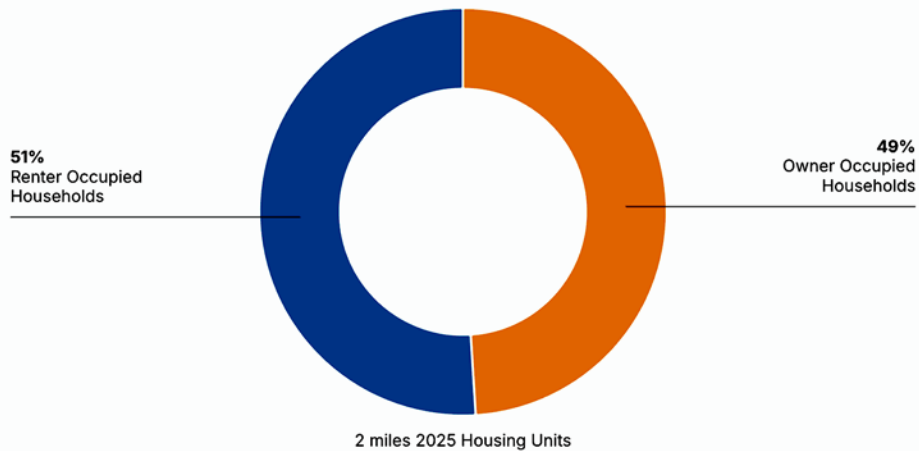
Households By Income



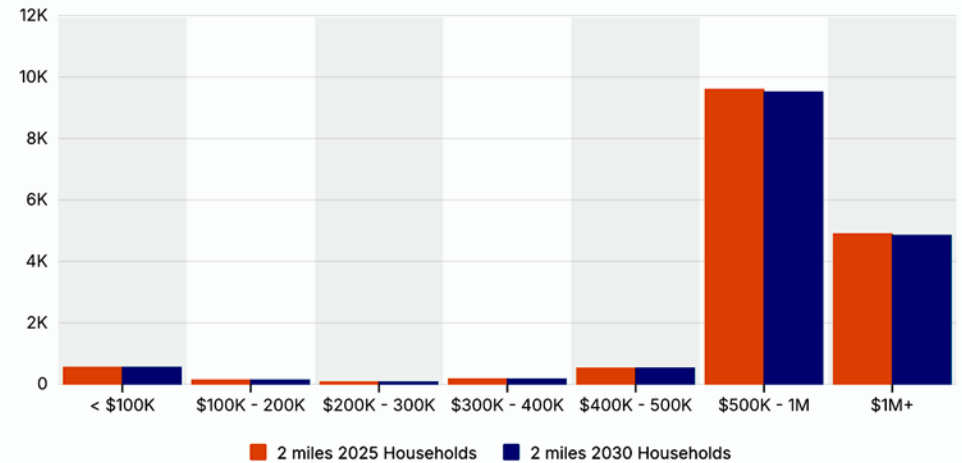
Household Income By Age



Housing Occupancy



Home Values



FOR SALE

Mixed-Use Retail or Industrial Opportunity ±2,343 SF Building on ±4,637 SF of Land

The information contained in this offering material is confidential and furnished solely for the purpose of a review by prospective Buyers of the subject business and is not to be used for any other purpose or made available to any other person without the express written consent of Major Properties or Compass.

This Brochure was prepared by Major Properties and Compass. It contains summary information pertaining to the business and does not purport to be all-inclusive or to contain all of the information that a prospective Buyer may desire. All information is provided for general reference purposes only and is subject to change. The summaries do not purport to be complete or accurate descriptions of the full documents involved, nor do they constitute a legal analysis of such documents.

This information has been secured from sources we believe to be reliable. We make no representations or warranties, expressed or implied, as to the accuracy of the information. References to income, square footage or age are approximate. Recipient of this report must verify the information and bears all risk for any inaccuracies.

Exclusively offered by:



Minaz Ahamed
Vice President

office 213.222.1201

mobile 310.408.0918

minaz@majorproperties.com

DRE Lic. 02230056

2068 TORRANCE BLVD, TORRANCE, CA 90501

MAJOR PROPERTIES
REAL ESTATE
Commercial & Industrial Specialists