



ROCKY MOUNTAIN EYE CENTER

4400 South 700 East, Murray, UT 84107

PROPERTY DESCRIPTION :

- Located on Highly Trafficked 700 East
- Abundant Parking Ratio of 4.7 Stalls/1,000 SF
- General or Medical Office Users
- Close Proximity to I-15 and I-215 Freeway Access Points
- Well Kept Property Grounds and Common Areas
- Competitive Full Service Lease Rate (Excl. Interior Janitorial)
- T.I. Available for Qualified Tenants
- Suite 240 May be Demised

LEASE RATE:

\$21.50 SF/YR
(FULL SERVICE)

PROPERTY DETAILS:

SUITE 220: 204 SF
SUITE 240: 2,400-4,710 SF

CHRIS METOS
801.879.7870
chris@iproperties.com

JAMES BURGESS
801.916.5457
james@theburgessco.com

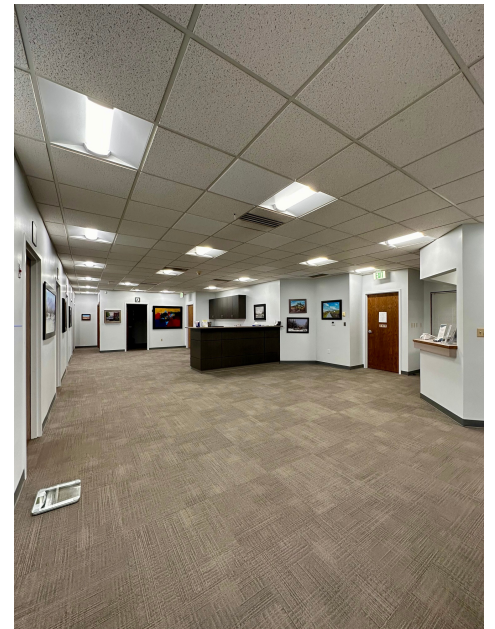
51 East 400 South Suite 210
Salt Lake City, UT 84111
801.355.0600 | iproperties.com



CHRIS METOS
801.879.7870
chris@iproperties.com

JAMES BURGESS
801.916.5457
james@theburgessco.com

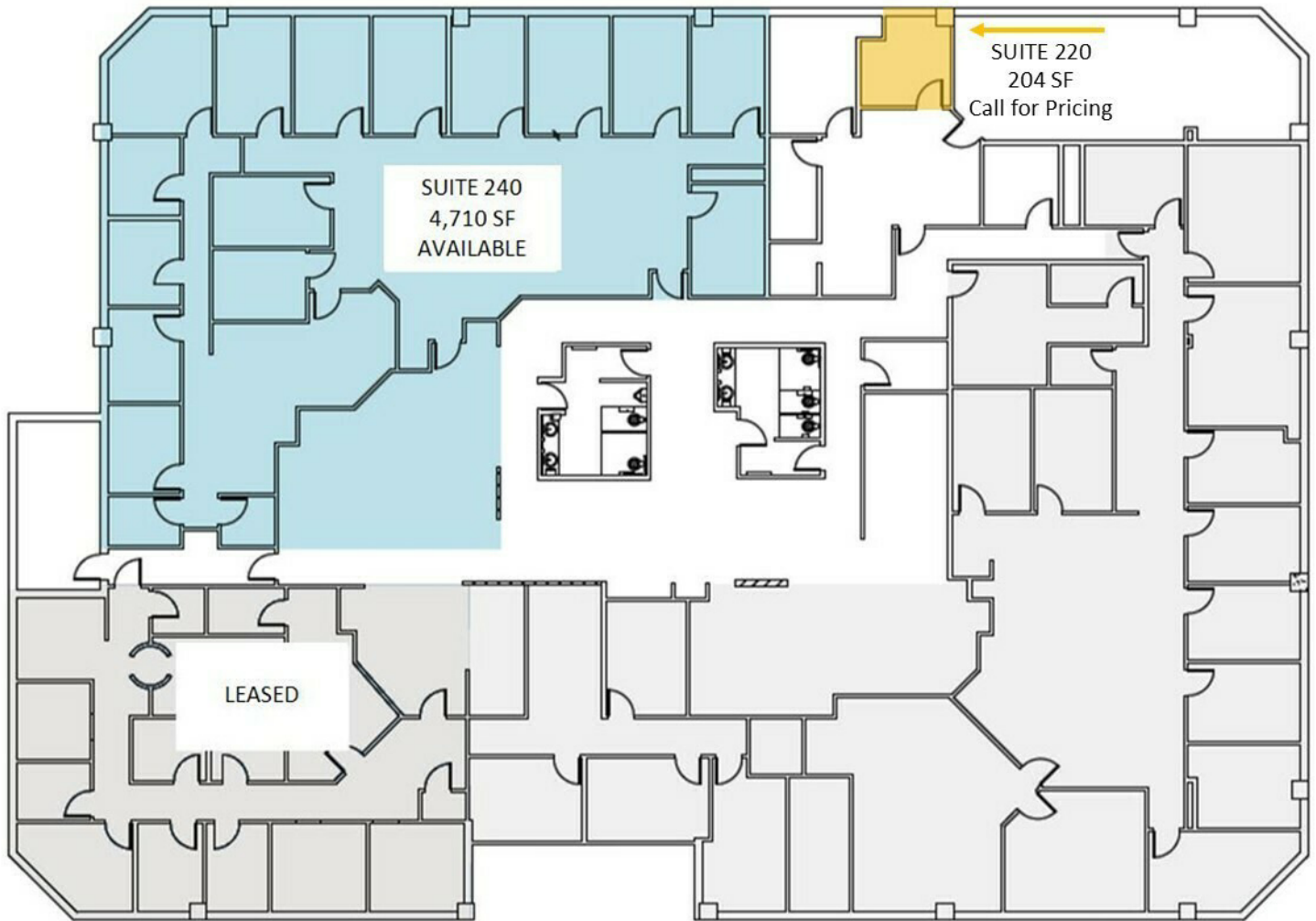
51 East 400 South Suite 210
Salt Lake City, UT 84111
801.355.0600 | iproperties.com



CHRIS METOS
801.879.7870
chris@iproperties.com

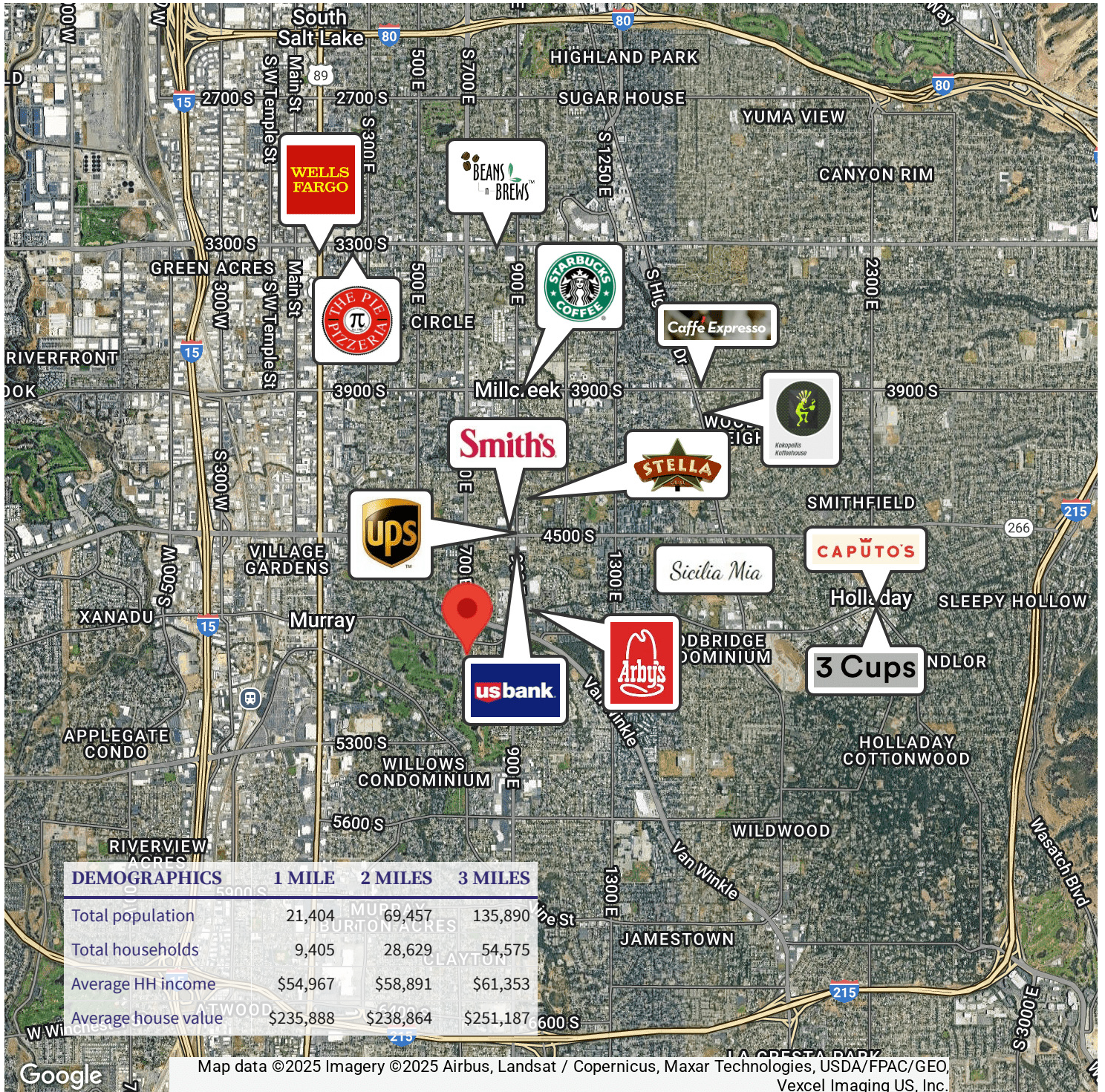
JAMES BURGESS
801.916.5457
james@theburgessco.com

51 East 400 South Suite 210
Salt Lake City, UT 84111
801.355.0600 | iproperties.com



CHRIS METOS **JAMES BURGESS**
801.879.7870 801.916.5457
chris@iproperties.com james@theburgessco.com

51 East 400 South Suite 210
Salt Lake City, UT 84111
801.355.0600 | iproperties.com



CHRIS METOS
801.879.7870
chris@iproperties.com

JAMES BURGESS
801.916.5457
james@theburgessco.com

51 East 400 South Suite 210
Salt Lake City, UT 84111
801.355.0600 | iproperties.com