









**FOR SUBLEASE**

## **±5,034 SF OFFICE/WAREHOUSE WITH 100% AC**

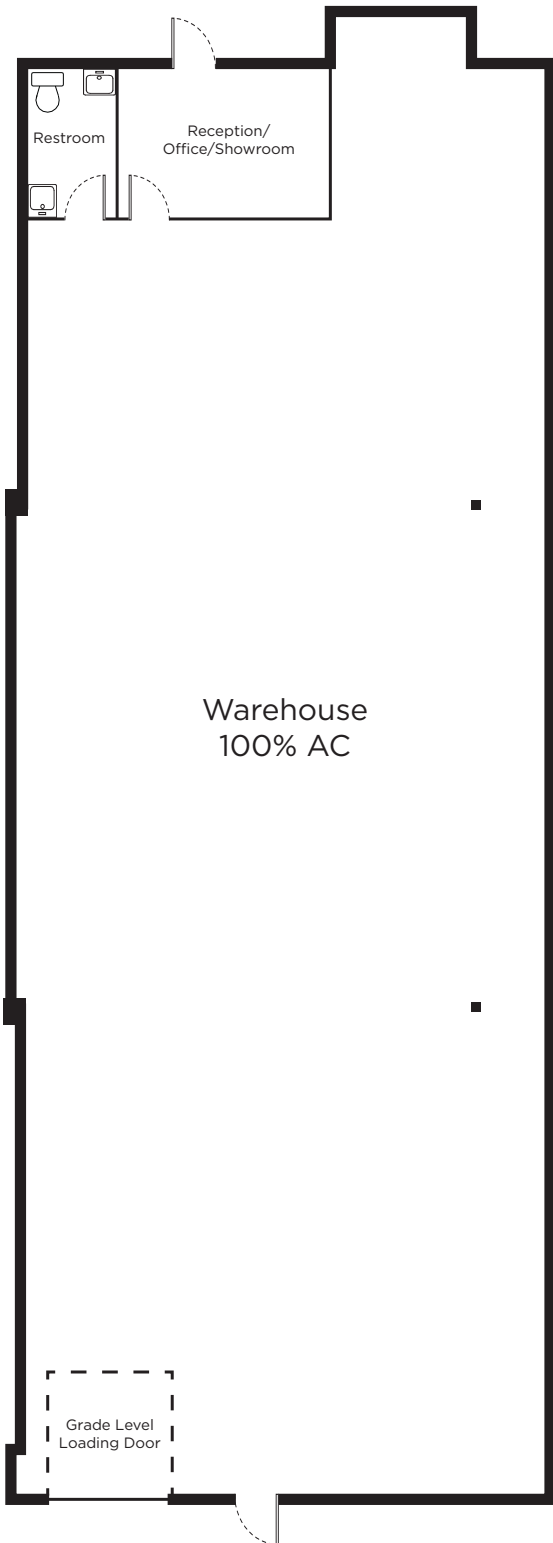
-  ±5,034 SF with reception/showroom/  
open bull pen and restroom
-  Grade level loading
-  ±23' clear height in warehouse (100% AC)
-  Fire sprinklered
-  Zoned: LI (Light Industrial), City of Mesa
-  Built in 2008



**Garrett Wilson**  
**Director**  
+1 602 224 4458  
garrett.wilson@cushwake.com

2555 E Camelback Rd, Suite 400  
Phoenix, AZ 85016  
+1 602 954 9000

[cushmanwakefield.com](http://cushmanwakefield.com)



**Garrett Wilson**  
**Director**  
+1 602 224 4458  
garrett.wilson@cushwake.com

2555 E Camelback Rd, Suite 400  
Phoenix, AZ 85016  
+1 602 954 9000

[cushmanwakefield.com](http://cushmanwakefield.com)



**Garrett Wilson**  
**Director**  
+1 602 224 4458  
garrett.wilson@cushwake.com

2555 E Camelback Rd, Suite 400  
Phoenix, AZ 85016  
+1 602 954 9000

[cushmanwakefield.com](http://cushmanwakefield.com)