

Oakland Business Park

11801-11891 E 33rd Ave, Aurora, Colorado

M B R C



AVAILABILITY:

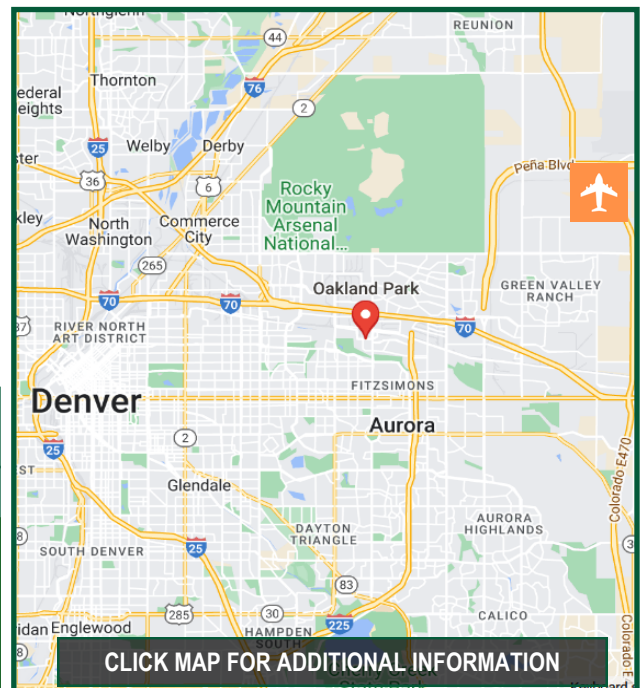
- | | |
|---------------------------|------------------------|
| 1 UNIT: 11881 D..... | 1,330 SF (2,250/mo MG) |
| 2 UNITS: 11801 A&B..... | 2,660 SF (4,500/mo MG) |
| 3 UNITS: 11831 A,B&C..... | 3,990 SF (6,750/mo MG) |

MICHAEL BLOOM
REALTY COMPANY



IMPORTANT FEATURES:

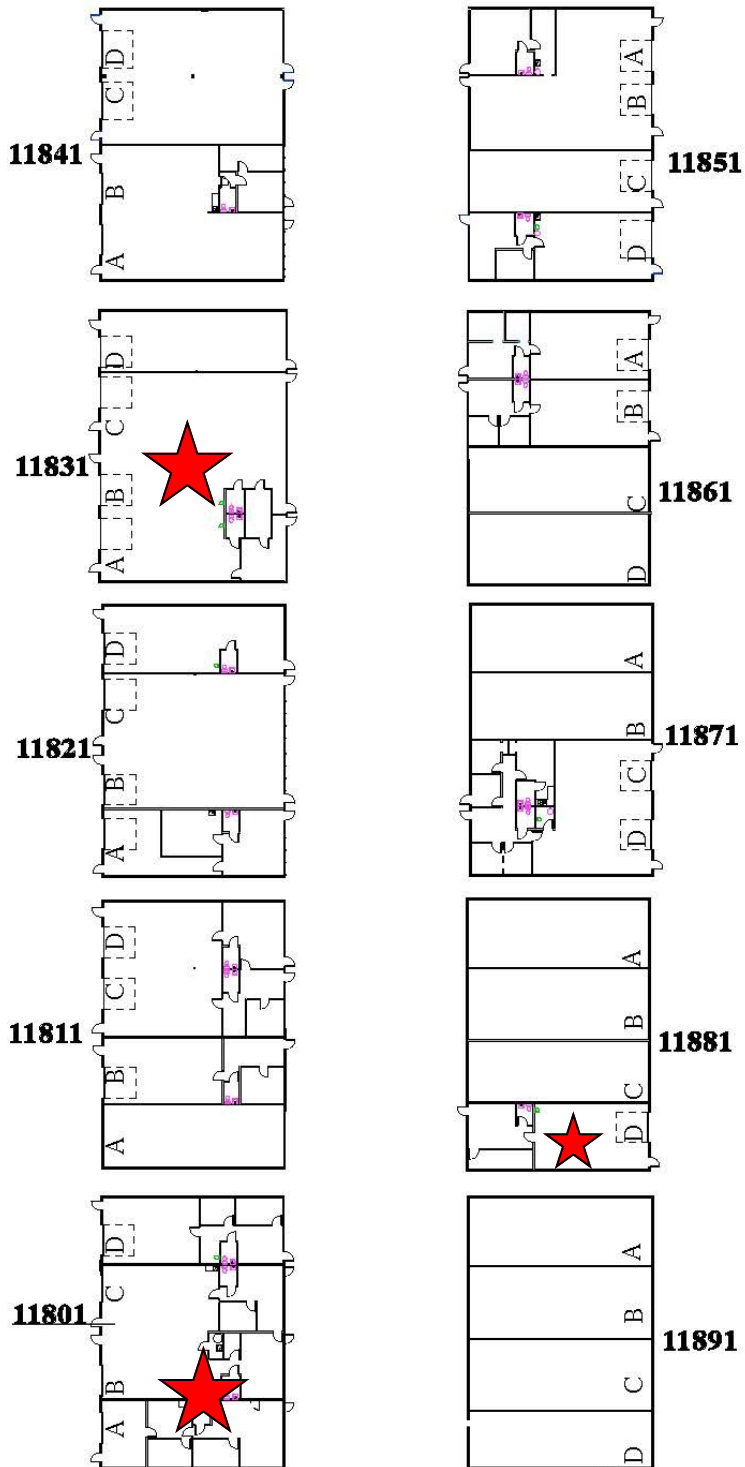
- PERIMETER SECURITY FENCE
- 10' X 10' DRIVE-IN LOADING DOORS
- 14' WAREHOUSE CEILING HEIGHT
- GENEROUS OFF STREET PARKING
- INDUSTRIAL ZONING



CLICK MAP FOR ADDITIONAL INFORMATION

Available	Total SF	Office SF	Loading	Power
11881 D	1,330	+/- 400	Drive-In	3 Phase
11801 A&B	2,660	+/- 800	Drive-In	3 Phase
11831 A,B&C	3,990	+/- 600	Drive-In	3 Phase

Oakland Business Park



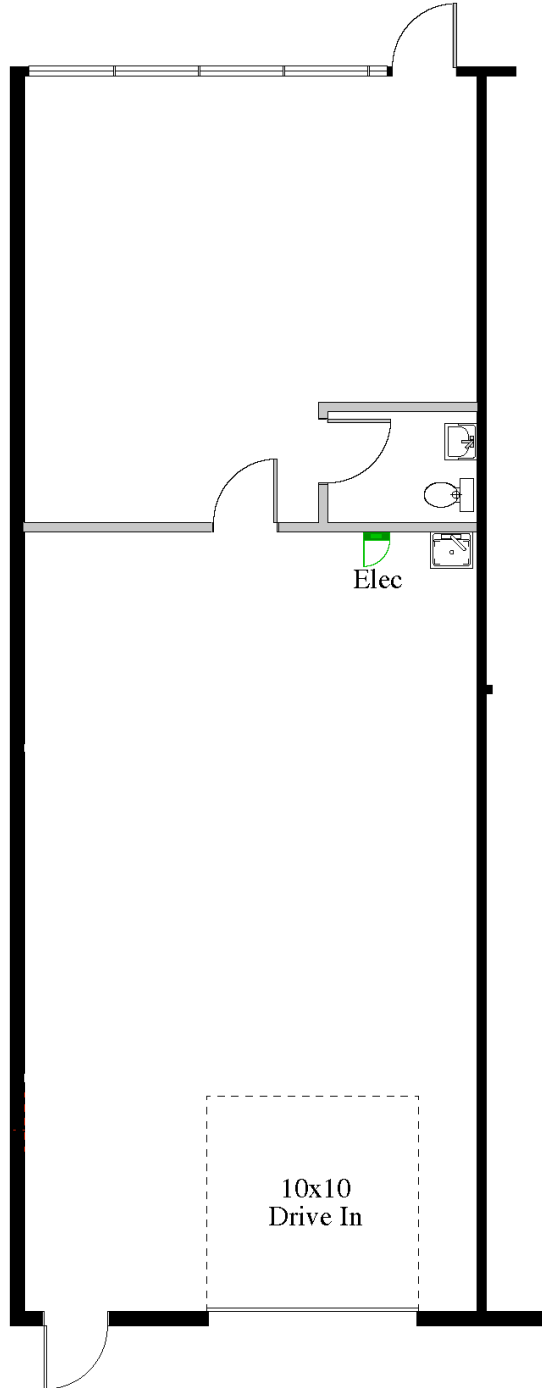
Brokerage Disclosure



1 Site Plan
Scale: 1" = 50 ft

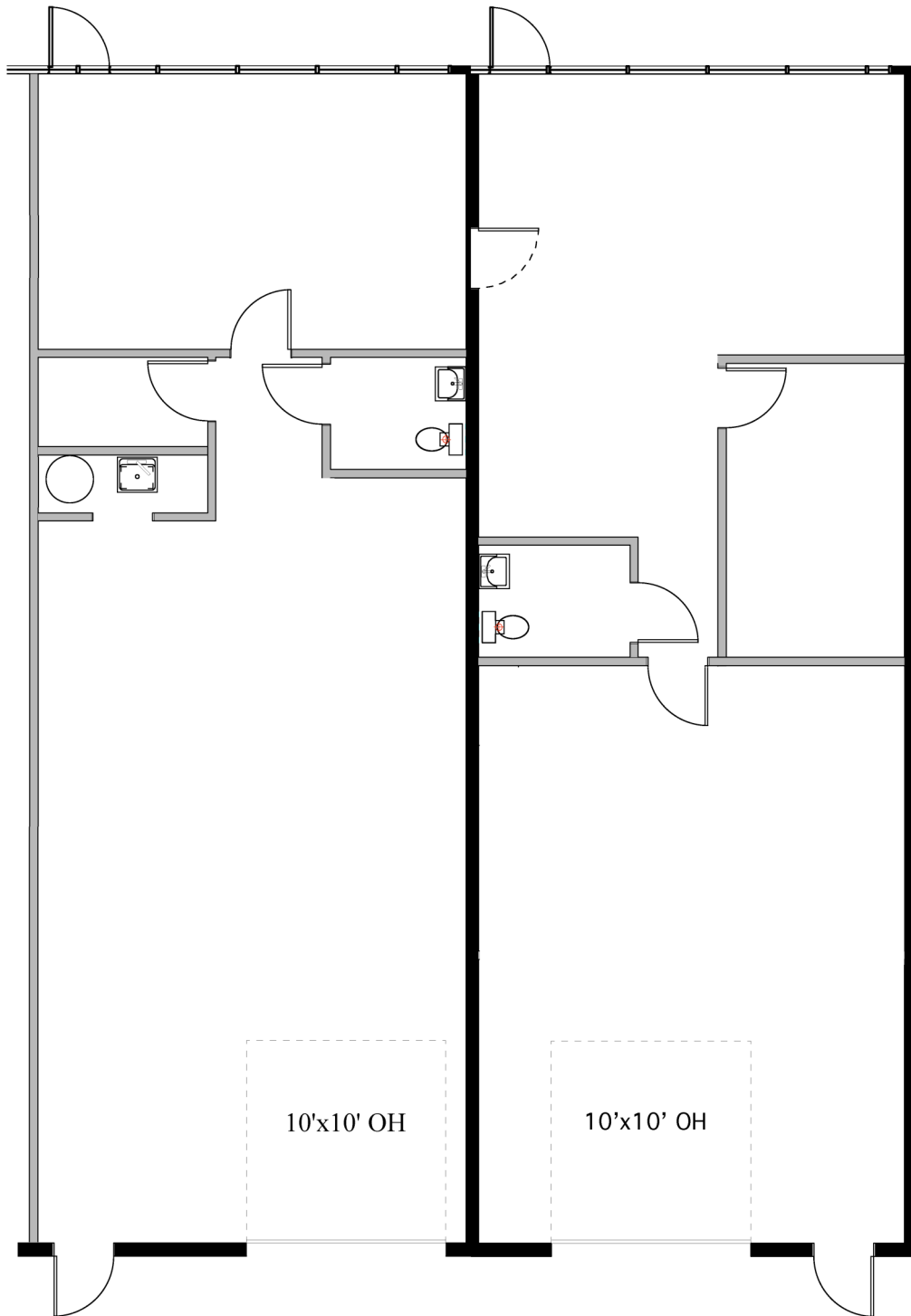


11881 East 33rd Unit D



1 Demolition Plan 1,330 sf
Scale: 1/8" = 1'-0"

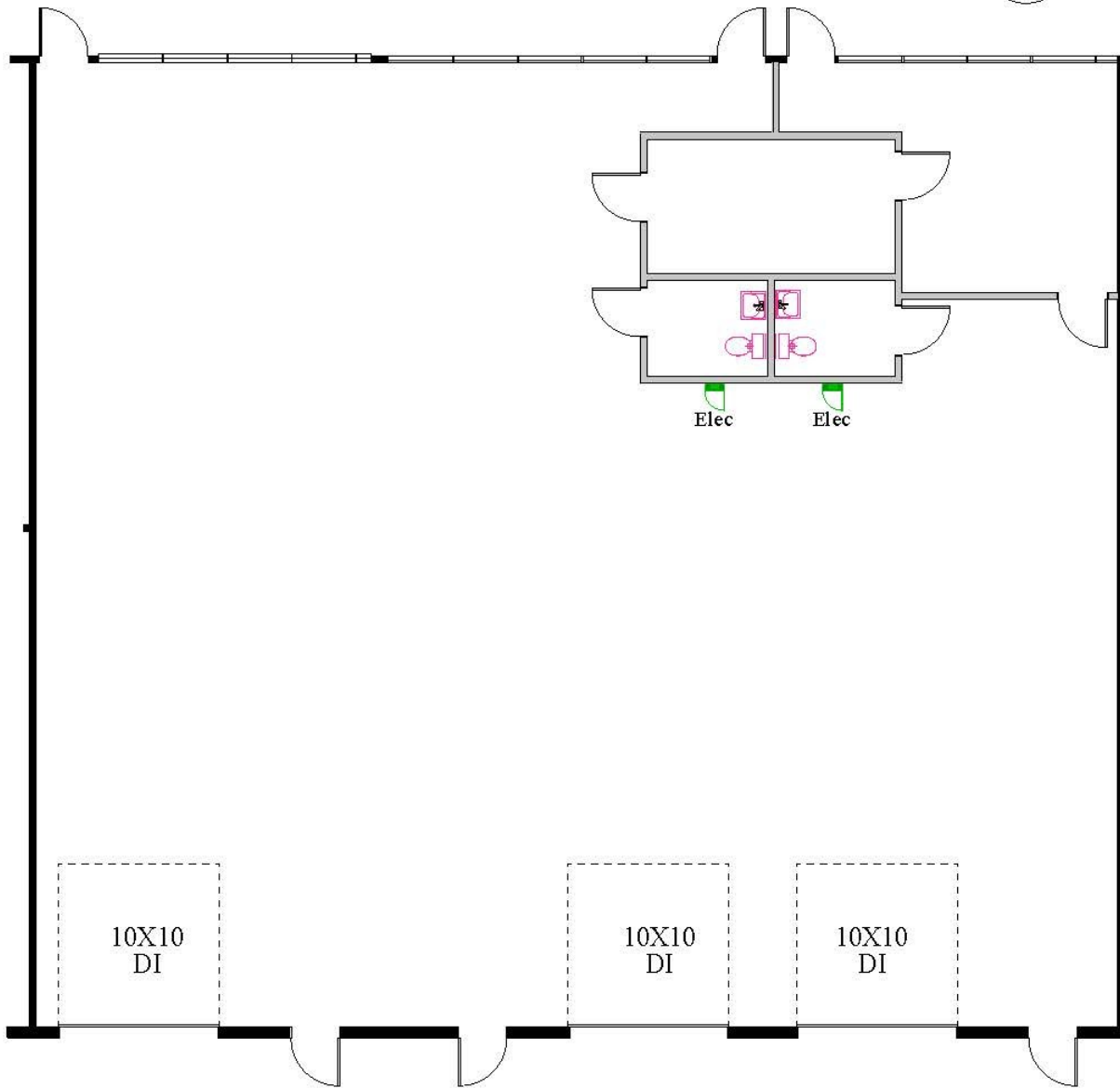
11801 East 33rd Avenue Unit A & B



1 Floor Plan 2,660 SF
Scale: 1/8" = 1'-0"



11831 East 33rd Units A,B, & C



1 Floor Plan
Scale: 1" = 10 ft