

9043 W Barnes Drive, Boise, ID

Mallard Place Building, in Blackeagle Center



SPACE DETAILS

SPACE: 1,704 SF
ACCESS: Private entry on north side of building.
LAYOUT: Glass frontage, open work area, private office, conference room, IT/storage and break area. Common restrooms.
AVAILABLE: September 2026

PROPERTY FEATURES

BLDG TYPE: Office
BLDG SIZE: 44,866 Square Feet
FLOORS: Single Story
PARKING: 5/1,000 SF Leased, included
LEASE TYPE: Full Service, Less Tenant Janitorial
ZONING: City of Boise, C-3D/DA
OWNER: Sundance Investments, L.L.L.P.

Call: 208-322-7300

WWW.SUNDANCECO.COM



9043 W Barnes Drive, Boise, ID

Mallard Place Building, in Blackeagle Center



HIGHLIGHTS

- Office building
- Maple Grove Road access and exposure
- Excellent building signage available
- Professional Blackeagle Center, 45 acres park provides abundant service and food amenities in close proximity
- Generous parking included
- Public bus stop adjacent to business park
- Close freeway access at both Overland (exit 50A/B) and Franklin Road (exit 49)

Call: 208-322-7300

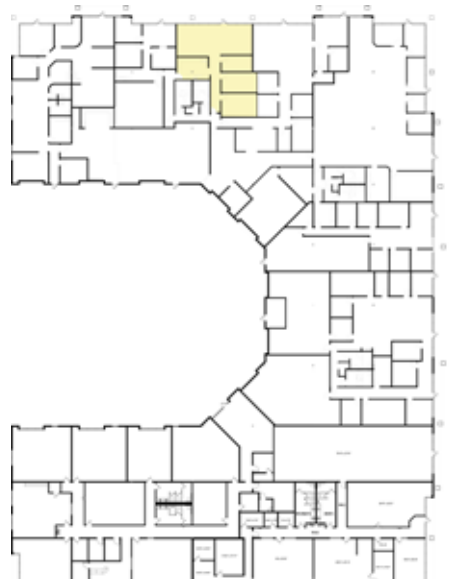
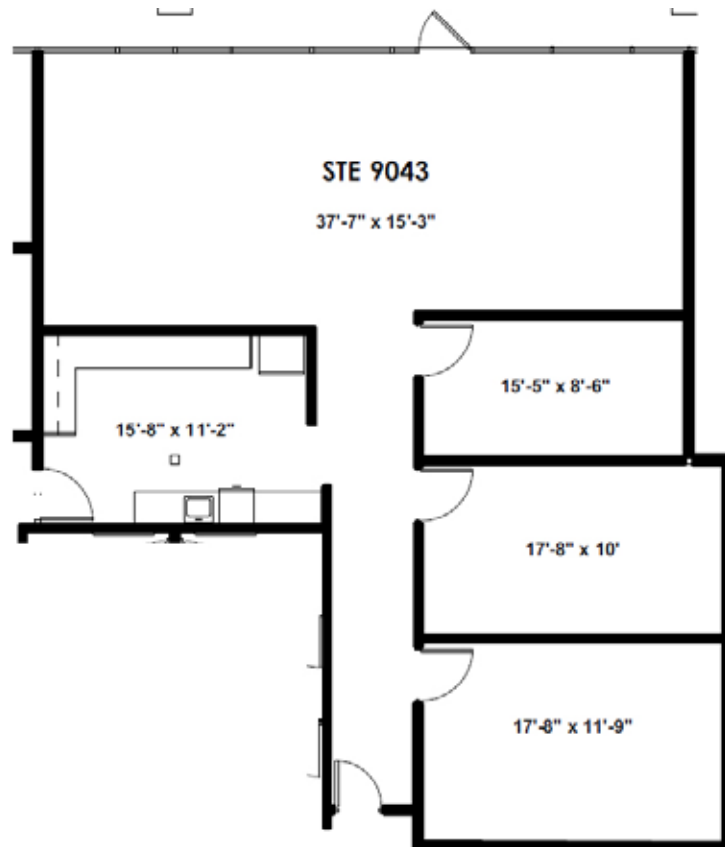
WWW.SUNDANCECO.COM



9043 W Barnes Drive, Boise, ID

Mallard Place Building, in Blackeagle Center

Floor Plan 1,704 SF



Call: 208-322-7300

WWW.SUNDANCECO.COM



9043 W Barnes Drive, Boise, ID

Mallard Place Building, in Blackeagle Center



Call: 208-322-7300

WWW.SUNDANCECO.COM

