

FOR SALE

3670 SW 185TH AVE

ALOHA, OR



3670 SW 185TH AVE



Features secure fencing and is ideally situated within commercial zoning in Beaverton, offering excellent potential for a variety of business uses.

PROPERTY OVERVIEW

ADDRESS	3670 SW 185th Ave Aloha, OR
BUILDING SF	4,290 SF
LOT SIZE	.38 Acres
POWER	Heavy power
OFFICE	2 story
AMENITIES	Multiple restrooms
SALE PRICE	\$950,000

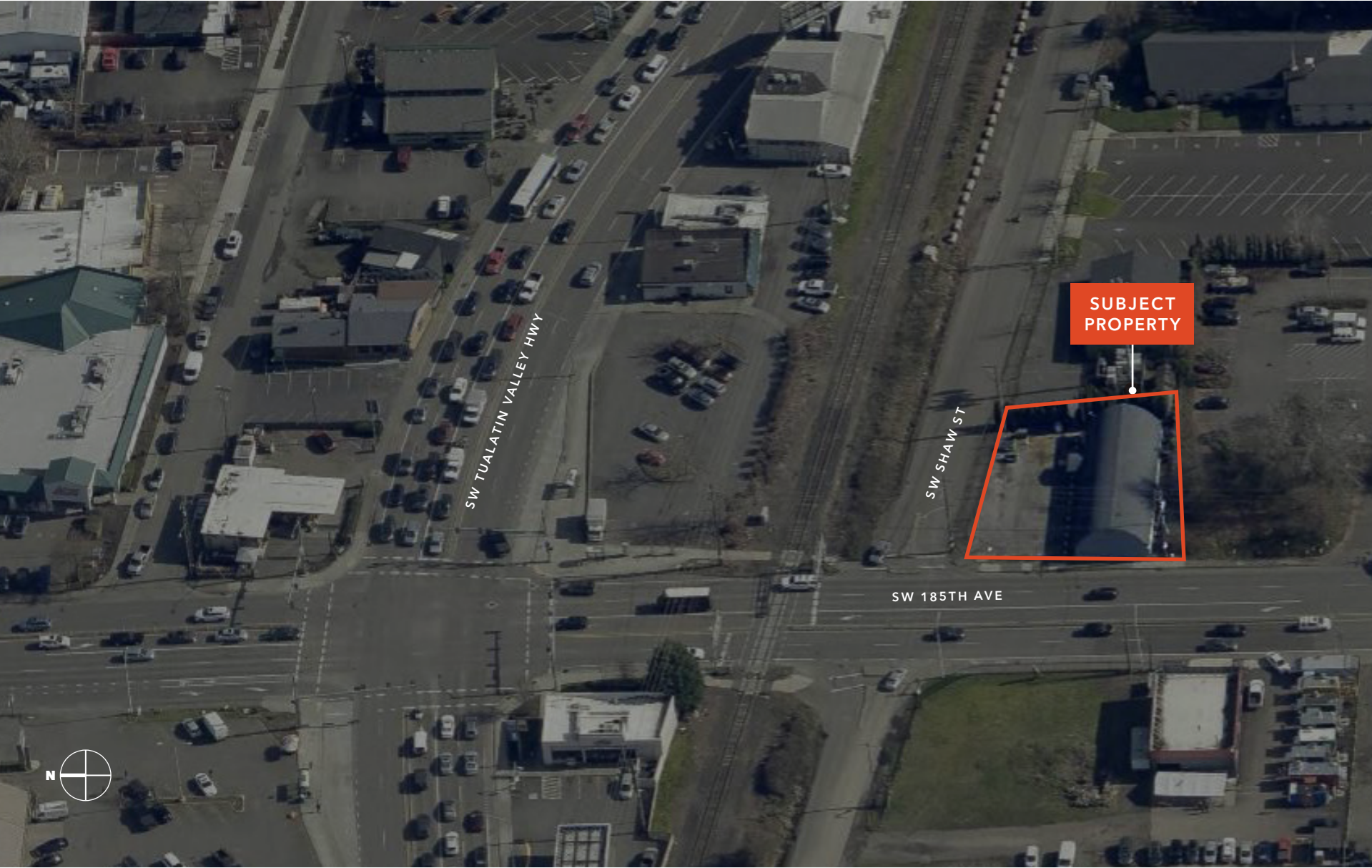
4,290 SF

TOTAL BUILDING SIZE

\$950K

SALE PRICE







3670 SW 185TH AVE

For more information on this property, please contact

CLIFF FINNELL
 Senior Vice President, Partner
 503.804.1772
 cliff.finnell@kidder.com

KIDDER.COM

This information supplied herein is from sources we deem reliable. It is provided without any representation, warranty, or guarantee, expressed or implied as to its accuracy. Prospective Buyer or Tenant should conduct an independent investigation and verification of all matters deemed to be material, including, but not limited to, statements of income and expenses. Consult your attorney, accountant, or other professional advisor. All Kidder Mathews designs are the sole property of Kidder Mathews. Branded materials and layouts are not authorized for use by any other firm or person.

