

BLDG F // SUITE 148 // FLOORPLAN

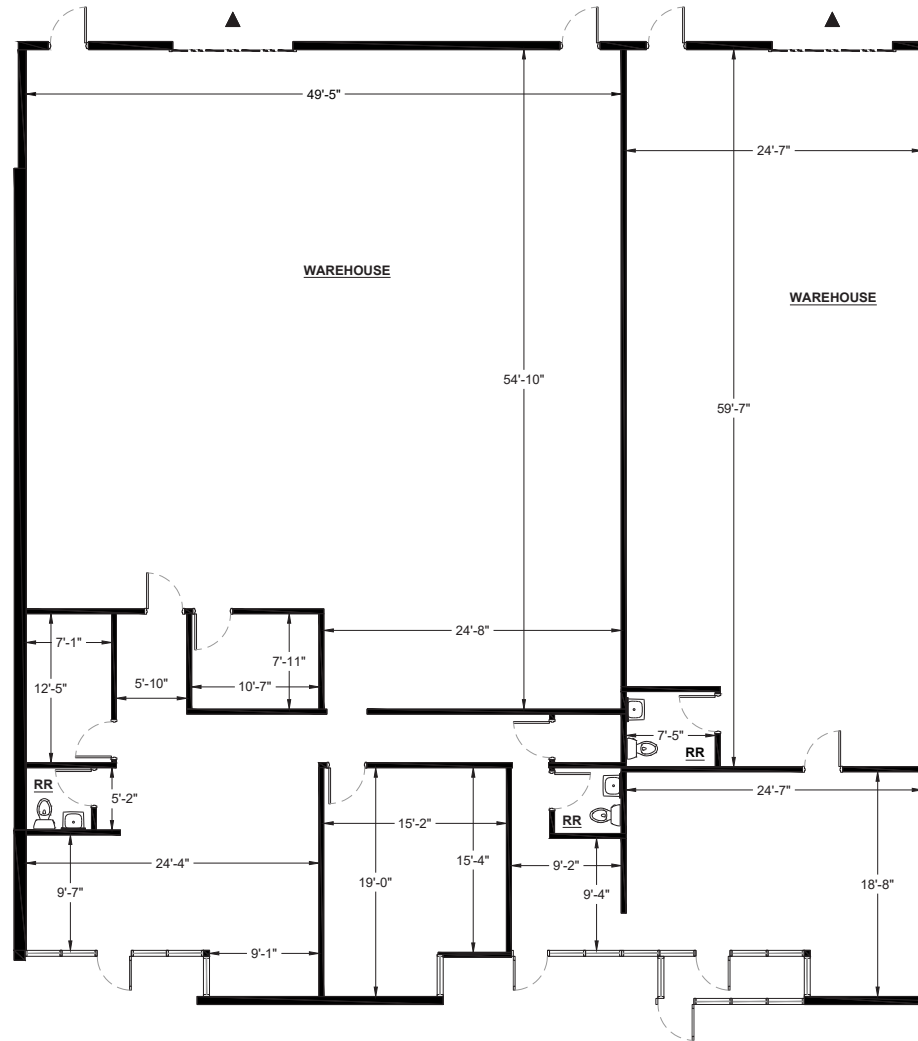
BLDG. F // SUITE 148

» AVAILABLE SF: 5,909

Keith Bell
o. 303.260.4332
keith.bell@nrmk.com

Newmark
1800 Larimer Street, Suite 1700
Denver, CO 80202
nrmk.com

14 INVERNESS DRIVE EAST
ENGLEWOOD, CO 80112

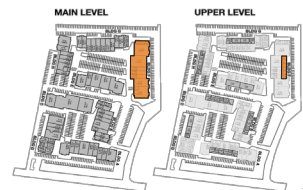


SUITE DATA:

OFFICE AREA	1,794 SF
WAREHOUSE AREA	4,115 SF
TOTAL SUITE AREA	5,909 SF

CLEAR HEIGHT	12'-0"
⊙ GRADE LEVEL DOORS	2

SITE KEY PLAN:



BUILDING KEY PLAN:

