



Each office independently owned and operated

FOR LEASE

OFFICE BUILDING

593 RAMAPO VALLEY RD

OAKLAND, NJ 07436

PATRICK VARELAS RE/MAX COMMERCIAL

392 Ramapo Valley Rd
Oakland, NJ 07436



PRESENTED BY:

PATRICK VARELAS
201.400.5344

FOR LEASE

OFFICE BUILDING

PROPERTY SUMMARY

593 RAMAPO VALLEY RD

OAKLAND, NJ 07436



PROPERTY DESCRIPTION

Beautifully renovated and ready for immediate occupancy, this approximately 1,500 SF ground-level suite offers a rare combination of professional finishes and flexible layout on a high-visibility Oakland corridor. Ideal for a law practice, medical or wellness provider, professional services firm, or any business seeking a turnkey space with upscale appeal. The interior has been finished to a high standard throughout, featuring premium wide-plank flooring, fresh white walls, recessed and designer lighting, and windows that bring in abundant natural light—uncommon for a ground-level space. The floor plan is genuinely versatile, pairing a welcoming open reception and work area with multiple private offices, a dedicated conference or treatment room, and a stylishly appointed full bathroom finished with marble-look tile and a custom vanity. A stone accent wall and tasteful fixtures lend a refined, established feel that's ready to impress clients from day one. Situated along Ramapo Valley Road (Route 202) with its own private rear entrance and signage potential, the suite enjoys strong daily traffic visibility and convenient access to Routes 287 and 208, making it easy to reach for staff and clients throughout Bergen County. On-site parking is available for both staff and visitors, and the space is well suited to medical, legal, wellness, or general professional office use. Spaces this polished and turnkey rarely come available for lease. Contact us today to schedule a private showing.

OFFERING SUMMARY

Lease Rate:	\$25 SF/yr (MG)
Number of Units:	1
Available SF:	1,500 SF
Lot Size:	16,771 SF
Building Size:	3,000 SF

DEMOGRAPHICS	1 MILE	5 MILES	10 MILES
Total Households	2,286	38,262	213,578
Total Population	6,595	104,571	589,452
Average HH Income	\$146,043	\$164,516	\$133,817



PATRICK VARELAS RE/MAX COMMERCIAL
Each office independently owned and operated

PATRICK VARELAS
201.400.5344
patrick@chopperrussoteam.com

392 Ramapo Valley Rd
Oakland, NJ 07436

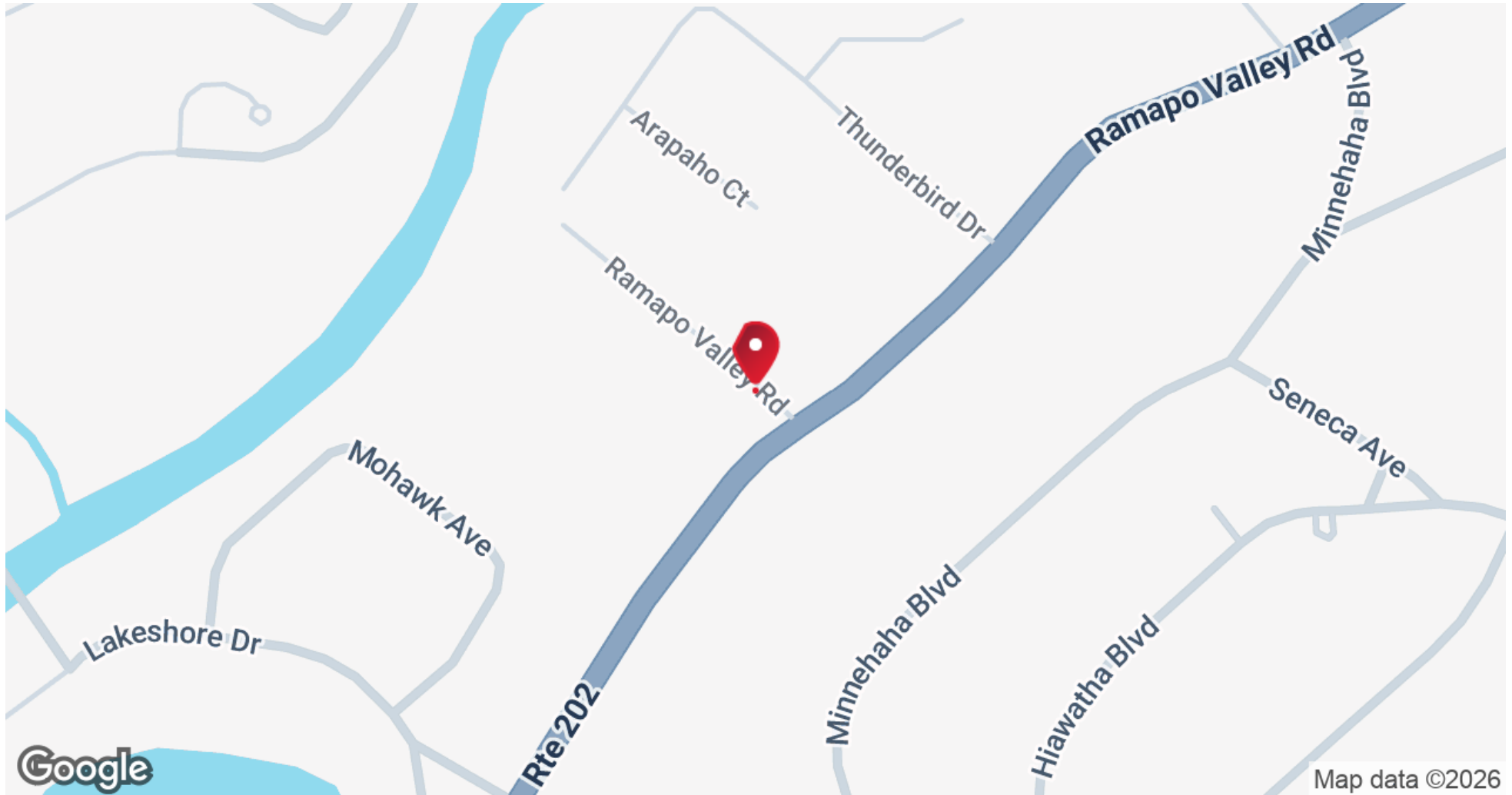
FOR LEASE

OFFICE BUILDING

LOCATION MAP

593 RAMAPO VALLEY RD

OAKLAND, NJ 07436



PATRICK VARELAS RE/MAX COMMERCIAL
Each office independently owned and operated

PATRICK VARELAS
201.400.5344
patrick@chopperrussoteam.com

392 Ramapo Valley Rd
Oakland, NJ 07436

All information contained herein is deemed reliable but not guaranteed. Each office independently owned and operated

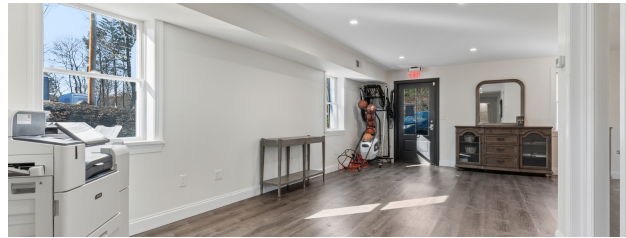
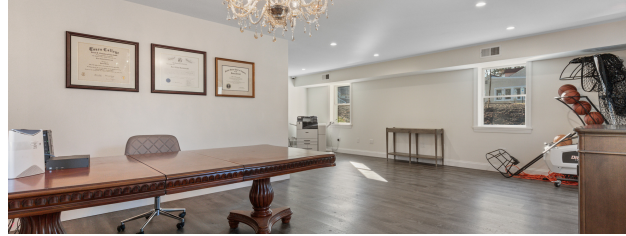
FOR LEASE

OFFICE BUILDING

ADDITIONAL PHOTOS

593 RAMAPO VALLEY RD

OAKLAND, NJ 07436



PATRICK VARELAS RE/MAX COMMERCIAL
Each office independently owned and operated

PATRICK VARELAS
201.400.5344
patrick@chopperrussoteam.com

392 Ramapo Valley Rd
Oakland, NJ 07436

All information contained herein is deemed reliable but not guaranteed. Each office independently owned and operated

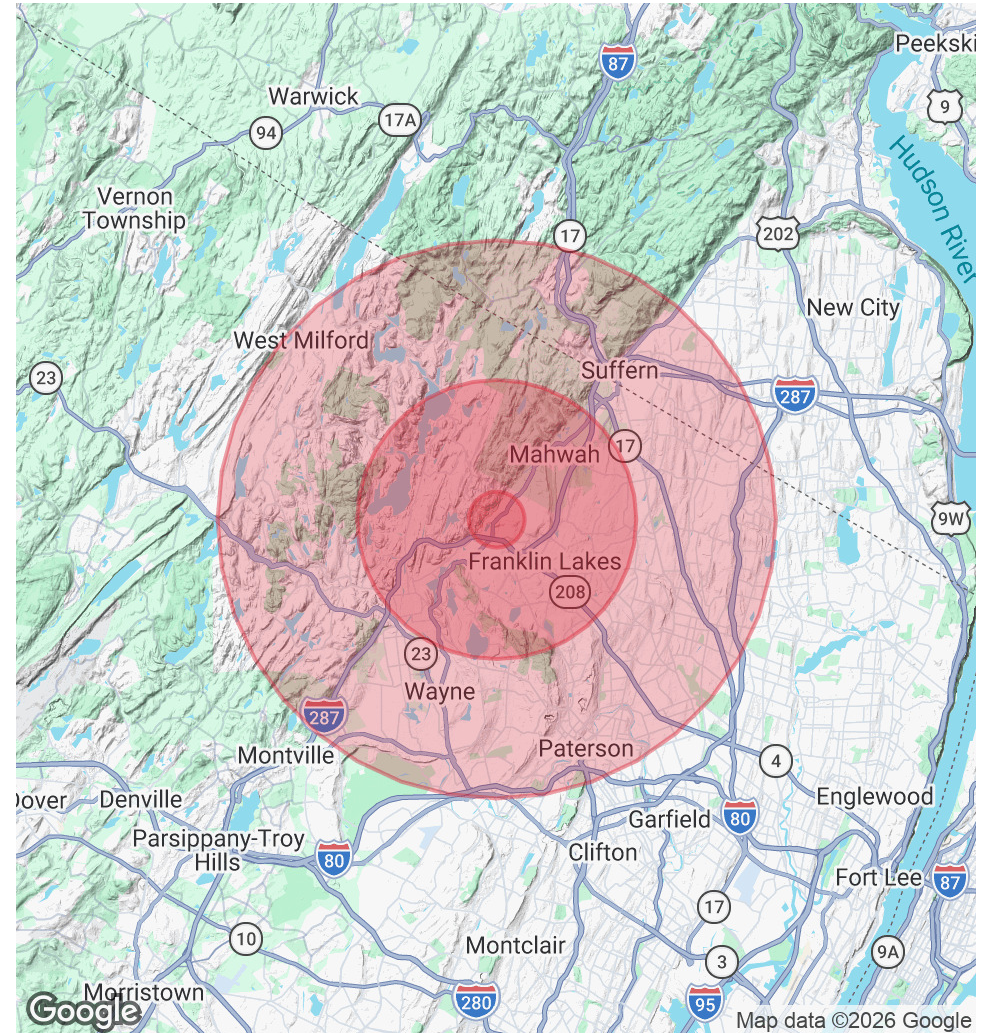
593 RAMAPO VALLEY RD

OAKLAND, NJ 07436

POPULATION	1 MILE	5 MILES	10 MILES
Total Population	6,595	104,571	589,452
Average Age	41.1	44.2	41.3
Average Age (Male)	43.8	42.9	39.6
Average Age (Female)	40.1	45.4	42.3

HOUSEHOLDS & INCOME	1 MILE	5 MILES	10 MILES
Total Households	2,286	38,262	213,578
# of Persons per HH	2.9	2.7	2.8
Average HH Income	\$146,043	\$164,516	\$133,817
Average House Value	\$465,678	\$573,120	\$468,758

2020 American Community Survey (ACS)



PATRICK VARELAS RE/MAX COMMERCIAL
Each office independently owned and operated

PATRICK VARELAS
201.400.5344
patrick@chopperrussoteam.com

392 Ramapo Valley Rd
Oakland, NJ 07436

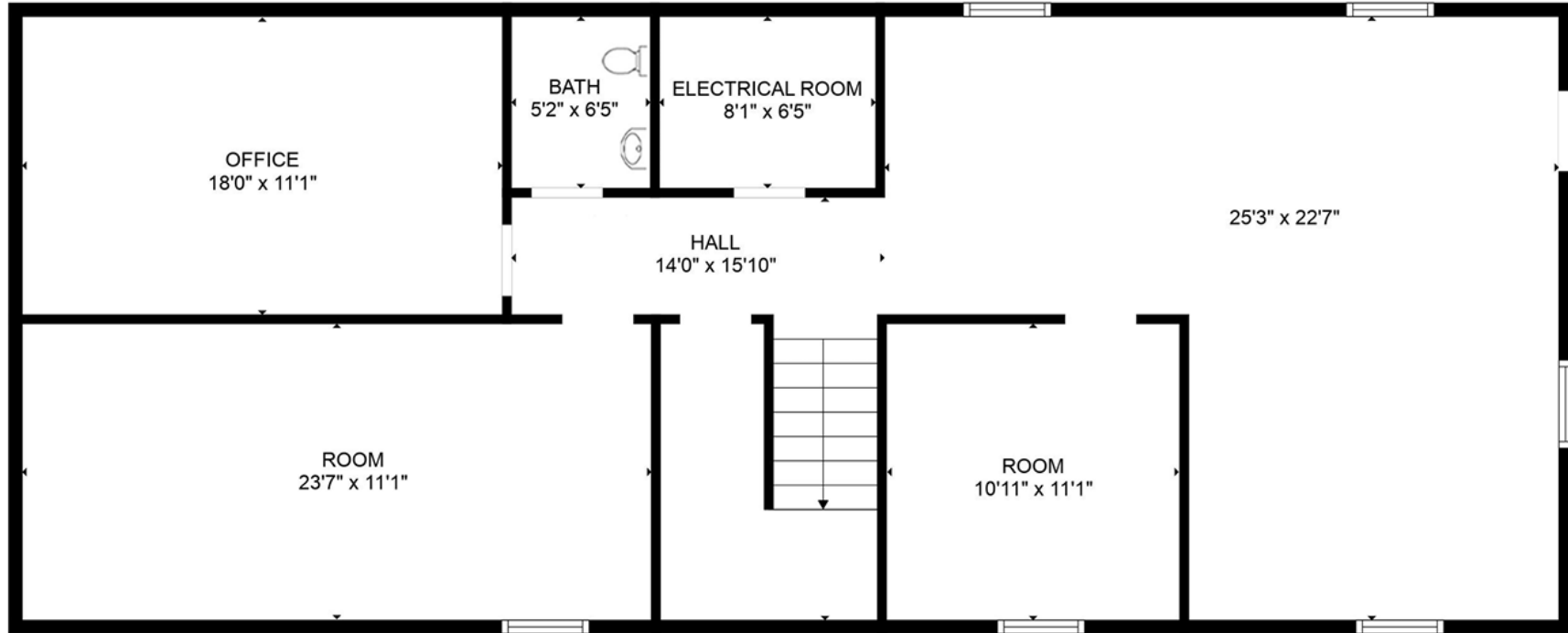
FOR LEASE

OFFICE BUILDING

FLOOR PLANS

593 RAMAPO VALLEY RD

OAKLAND, NJ 07436



FLOOR 1



PATRICK VARELAS RE/MAX COMMERCIAL
Each office independently owned and operated

PATRICK VARELAS
201.400.5344
patrick@chopperrussoteam.com

392 Ramapo Valley Rd
Oakland, NJ 07436

All information contained herein is deemed reliable but not guaranteed. Each office independently owned and operated