



HARTMANN
COMMERCIAL REAL ESTATE

FOR SALE - 280 Acre Farm

- 4 Pivots – Irrigated – Hay Barn
- Turnkey alfalfa and Sudan production

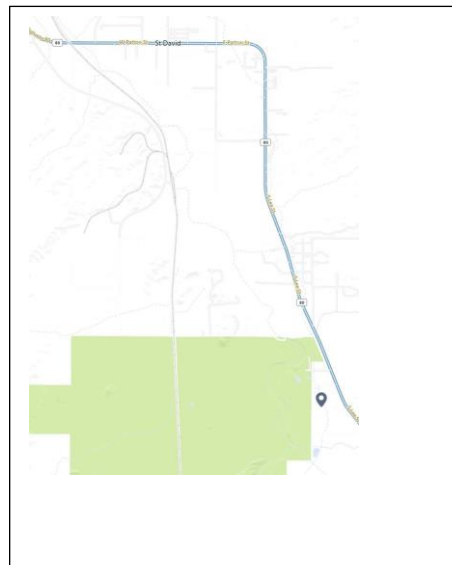
Curtis/Springs Farm

South Curtis Rd, St David, AZ

- Parcels :** 121-31-002B; 121-31-002A; 121-35-008; 121-42-003; 121-35-004B/C/D; 121-36-006K/6S
- Zoning:** R-36 / RU-4 (Cochise County)
- Price:** \$2,800,000
- Utilities:** SSVEC 3-phase electric to lot line; 1 artesian well plus 4 large irrigation wells. Install septic as needed.
- Terms:** Cash or submit
- Comments:** Four pivots on farm fields plus irrigated row fields and over ½ mile of extensive underground, 12” piping with bonnets. Alfalfa and Sudan production farmland near San Pedro River with BLM bordering property. Access to San Pedro Riparian National Conservation Area.

**FOR MORE
INFORMATION
PLEASE CONTACT:**

Alain Hartmann
Designated Broker
520.870-1030
alain@hcreinc.com



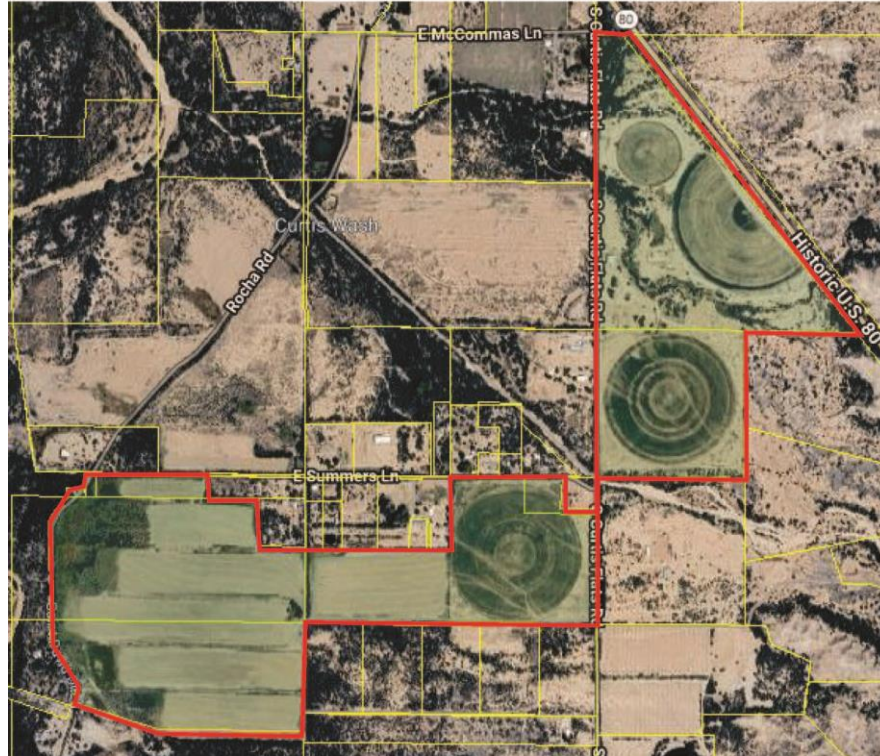
No warranty or representation, express or implied, is made to the accuracy or completeness of the information contained herein, and same is submitted subject to errors, omissions, change of price, rental or other conditions, withdrawal without notice, and to any special listing conditions imposed by the property owner(s). All surface water rights in the San Pedro Valley are subject to the Gila River and Little Colorado River General Adjudication.

FOR SALE - 280 Acre Farm

- 4 Pivots – Irrigated
- Row fields under irrigation

Curtis/Springs Farm

South Curtis Rd, St David, AZ



View to the southwest across the property

FOR SALE - 280 Acres

- 4 Pivots – Irrigated
- Row fields under irrigation

Curtis/Springs Farm

South Curtis Rd, St David, AZ



Hay Barn – Equipment not included





6075 E Grant Rd, Tucson, AZ 85712
O: 520.332.6000 C: 520.870.1030

Curtis 105, 12 inch Underground Water System and Riser Install

Building the 12 Inch Pipe riser insert



Adding gasket



Underground Water System and Riser Install

Lowering assembly



Connecting assembly & riser



Curtis Farms 105 Acre Commercial Irrigation

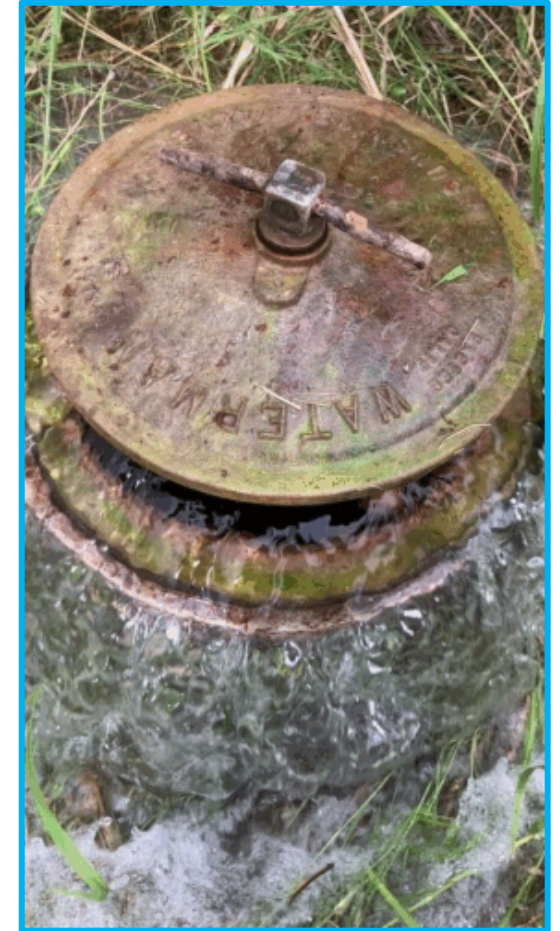
Bonnet attached to Riser



Laterals



7 risers in total



Well – 1600 gpm



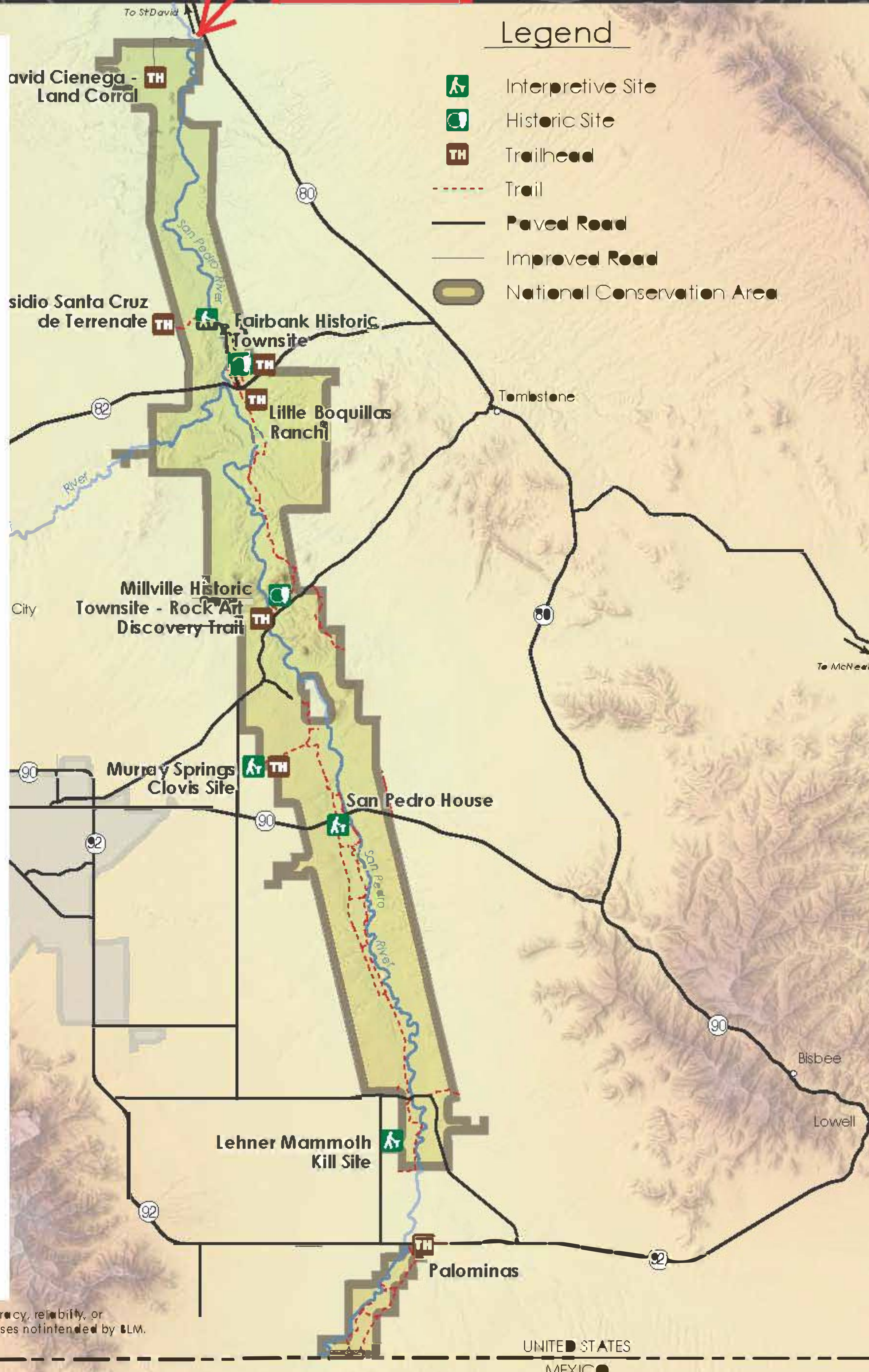
Row Irrigation



San Pedro Riparian National Conservation Area

Subject Property

Curtis Farms is near the top of SPRNCA, the San Pedro Riparian National Conservation Area. The San Pedro River is celebrated as the most protected river in America. Home to over 400 species of birds. Visitors are attracted from around the world to discover along the San Pedro the birds that are difficult to find elsewhere.



No warranty is made by the BLM as to the accuracy, reliability, or completeness of these data for use or for purposes not intended by BLM. M14-09-01:2015