

555

WEST 25TH STREET

BETWEEN TENTH AND ELEVENTH AVENUES


CURRENT

GALLERY HENOCH

555

dna



BUILDING OVERVIEW

- Full floor office space available
- Tenant controlled HVAC
- Private keyed elevator entry/video security system
- On-site super
- 400 AMPS per floor
- 3 Sides of light on every floor
- 12' Ceiling heights



555 WEST 25TH STREET

Full 4th Floor

SIZE

9,011 RSF

POSSESSION

Immediate

ASKING

\$49 PSF

TERM

3-10 Years

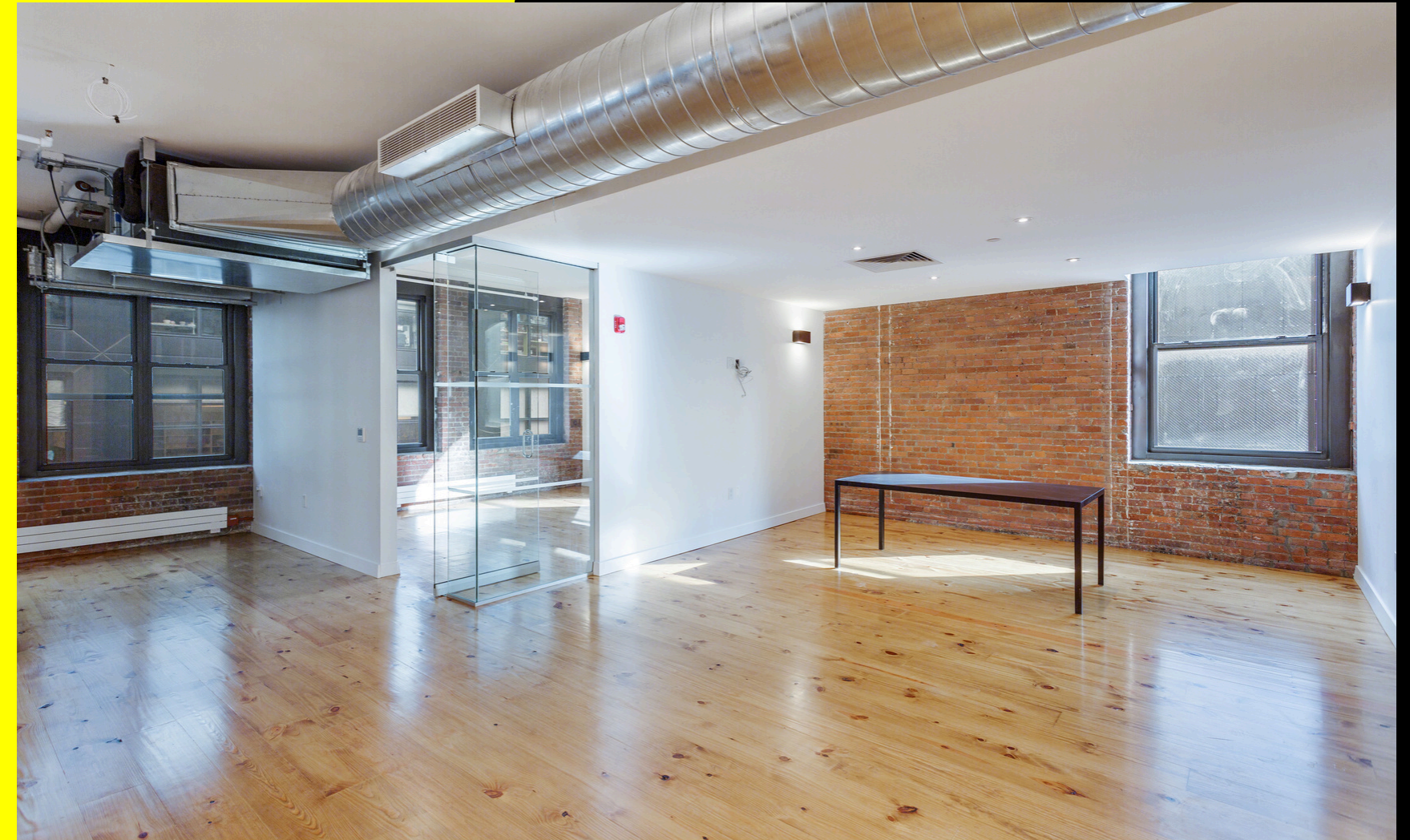
HIGHLIGHTS

- Full floor brand new pre-built space
- Built with glass conference room, glass offices and brand new kitchen
- Private restrooms
- 3 Sides of light



555 WEST 25TH STREET

Full 4th Floor



555 WEST 25TH STREET

Partial 3rd Floor | Spaces D & F Available

SIZE & ASKING RENT

Space D: 2,214 SF, \$8,000/month

Space F: 472 SF, \$2,600/month

AVAILABLE NOW: SPACES D + F

Space D: 2,214 SF | Space F: 472 SF

Immediate

TERM

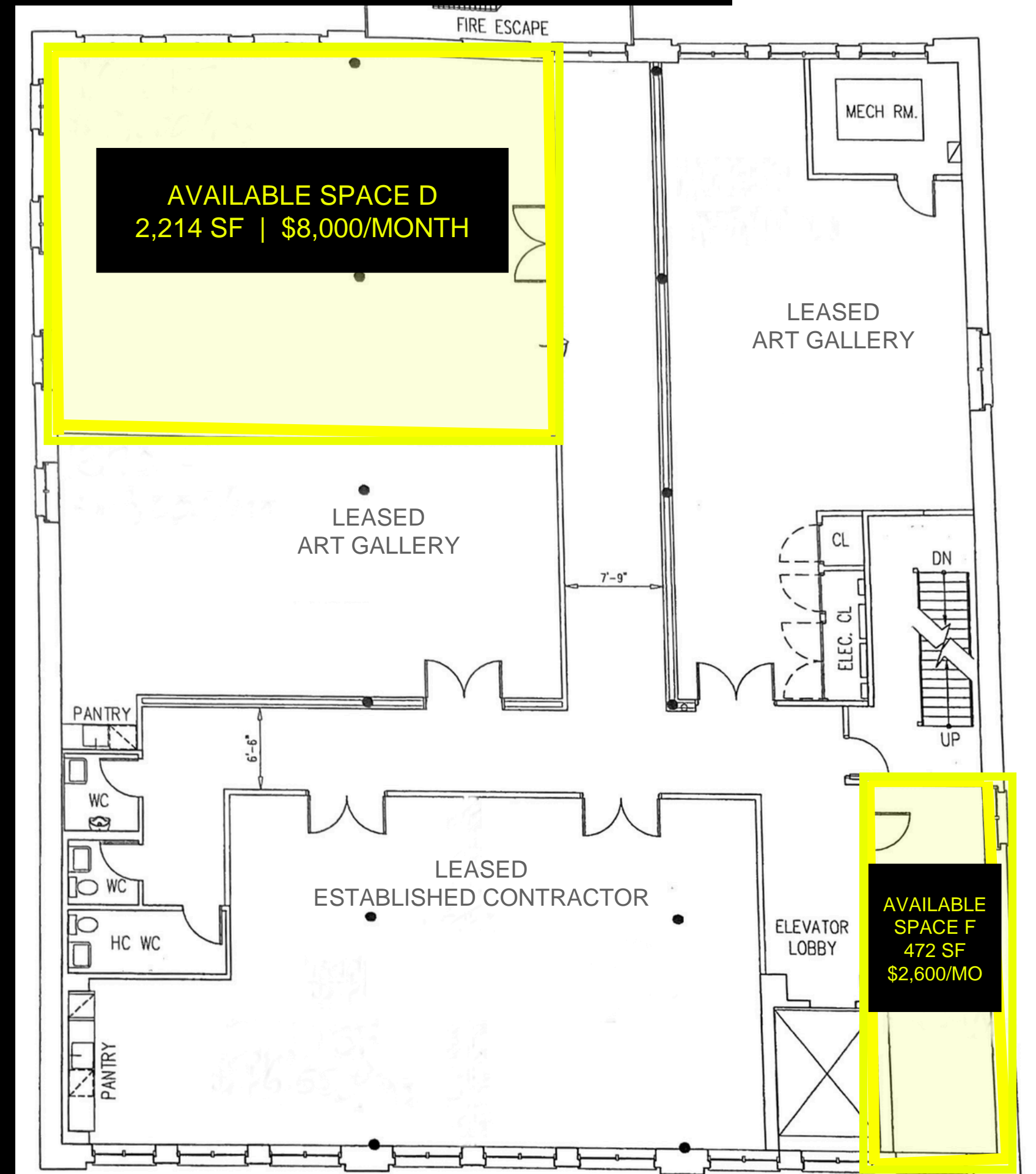
Negotiable

HIGHLIGHTS

- Space D:
 - Corner space with 6 windows
 - Open loft space
 - Landlord can build to suit
 - Central HVAC
 - Landlord has the ability to install wet pantry
- Space F:
 - Private corner office
 - South facing windows

Tenant mix includes an established contractor and two art galleries.

3RD FLOOR AVAILABILITY: SPACES D + F





CONTACT

MICHAEL SEGERMAN

msegerman@currentadvisors.com

516.297.3337

CURRENT
Real Estate Advisors