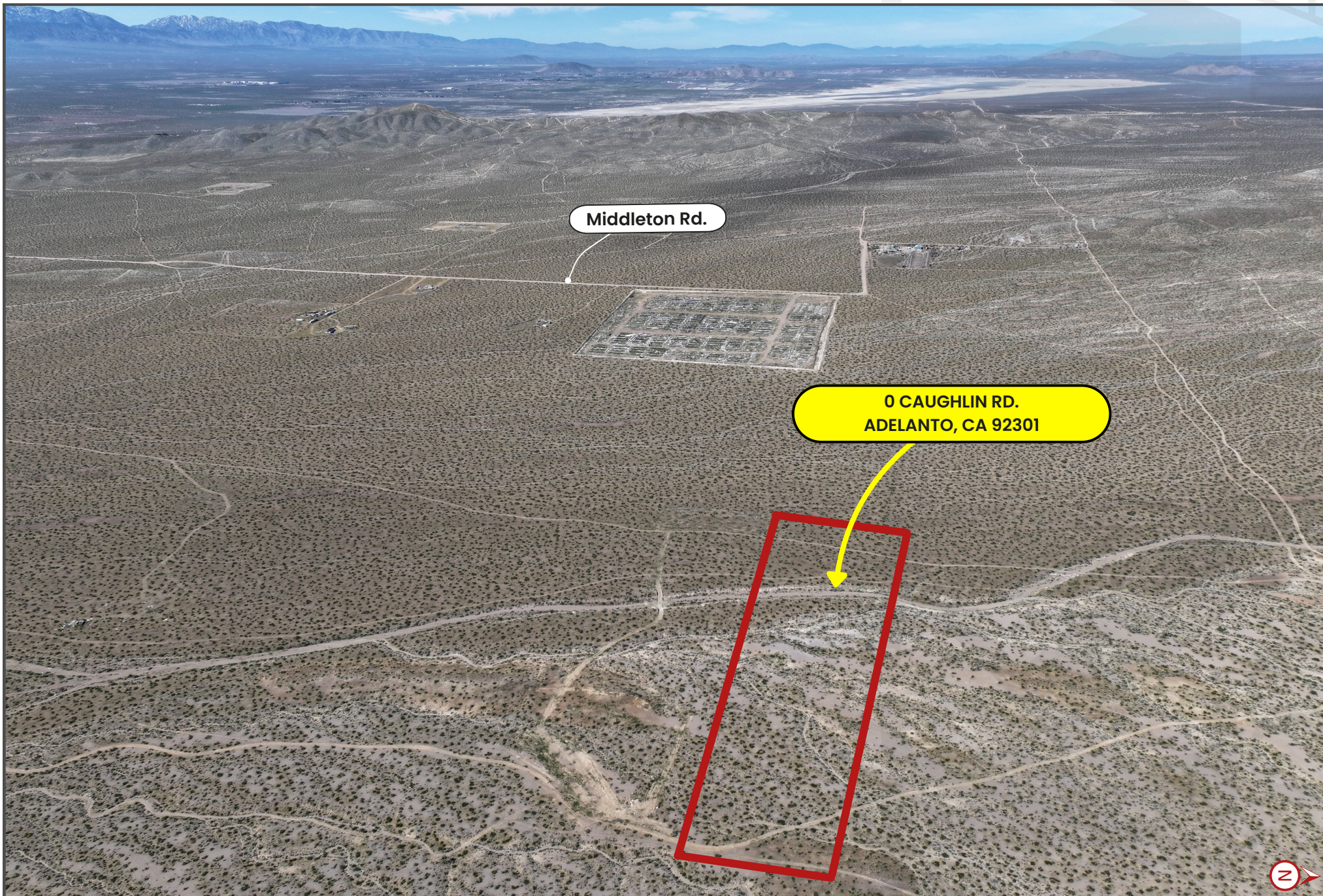


FOR SALE



INLAND
EMPIRE

±10 - ACRES (±435,600 SQ.FT.) OF LAND
0 CAUGHLIN RD., ADELANTO, CA 92301 (0458-042-51-0000)



0 CAUGHLIN RD., ADELANTO, CA 92301 (0458-042-51-0000)



INLAND
EMPIRE

±10 - ACRES (±435,600 SQ.FT.) OF LAND

PROPERTY FEATURES

Address: 0 Caughlin Rd., Adelanto, CA 92356

Lot Size: ±10 Acres (±435,600 SF)

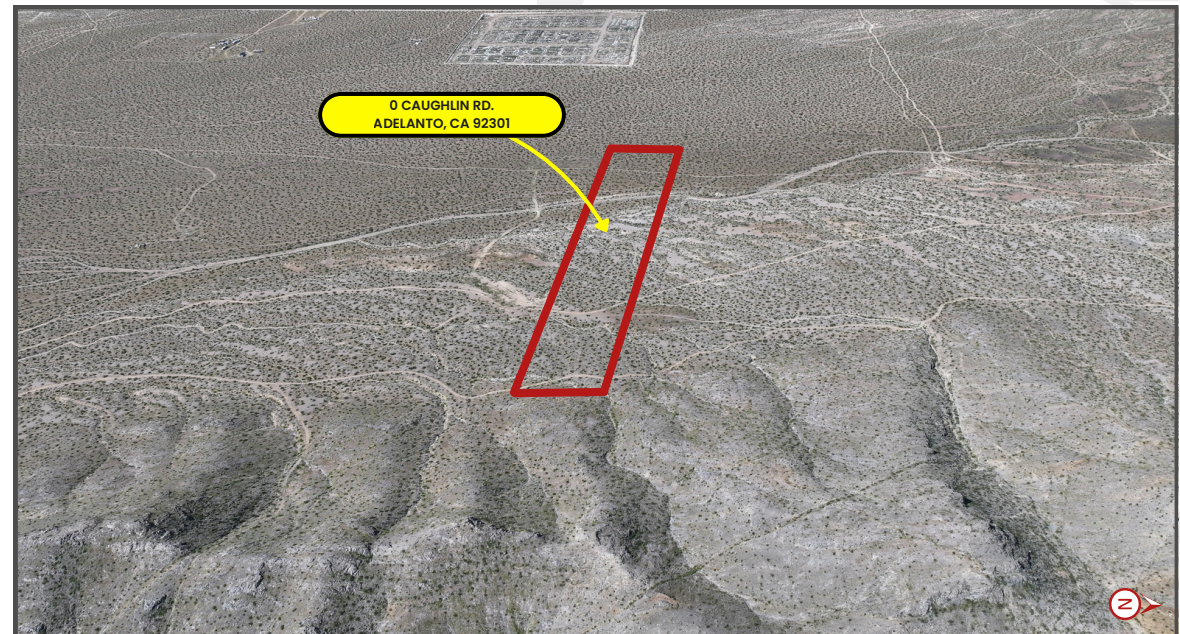
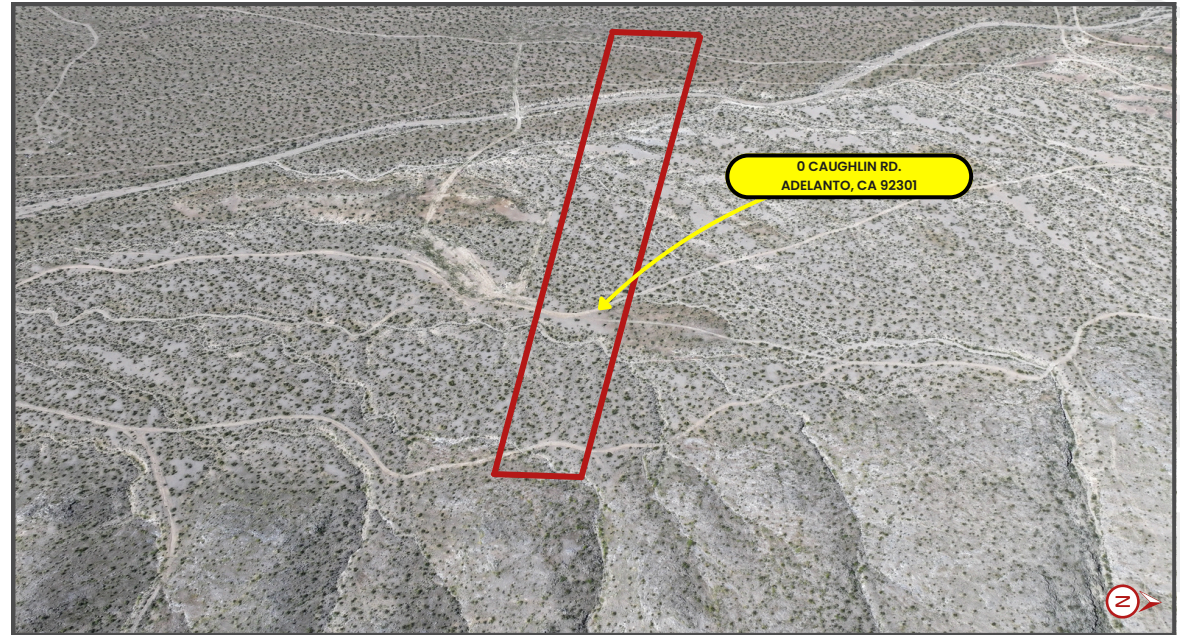
APN: 0458-042-51-0000

Zoning: Residential Low (RL)

PROPERTY HIGHLIGHTS

- ±10 Acres of Vacant Land – Large parcels offering ample space for residential development, farming, or a private retreat.
- Mountain & Desert Views – Scenic surroundings with open landscapes and natural High Desert beauty.
- Quiet & Remote Location – Peaceful setting away from city congestion, ideal for privacy and rural living.
- Agricultural Potential – Suitable for small farming operations, gardening, or rural lifestyle uses.
- Residential Zoning (RL) – Zoned Low Density Residential, providing potential for future residential development or rural homesite

ADDITIONAL PICTURES



0 CAUGHLIN RD., ADELANTO, CA 92301 (0458-042-51-0000)



±10 - ACRES (±435,600 SQ.FT.) OF LAND

CONTACTS

"Happy" Raj Singh

T(909) 935-0931

Raj.Singh@kwcommercial.com

CaIDRE Lic. #02199675

Rene Ramos, Jr.

T(909) 980-6868

Rene.Ramos@kwcommercial.com

CaIDRE Lic. #01836872

WE OBTAINED THE INFORMATION ABOVE FROM SOURCES WE BELIEVE TO BE RELIABLE. HOWEVER, WE HAVE NOT VERIFIED ITS ACCURACY AND MAKE NO GUARANTEE, WARRANTY, OR REPRESENTATION ABOUT IT. IT IS SUBMITTED SUBJECT TO THE POSSIBILITY OF ERRORS, OMISSIONS, CHANGE OF PRICE, RENTAL OR OTHER CONDITIONS, PRIOR SALE, LEASE OR FINANCING, OR WITHDRAWAL WITHOUT NOTICE. WE INCLUDE PROJECTIONS, OPINIONS, ASSUMPTIONS OR ESTIMATES FOR EXAMPLE ONLY, AND THEY MAY NOT REPRESENT CURRENT OR FUTURE PERFORMANCE OF THE PROPERTY. YOU AND YOUR TAX AND LEGAL ADVISORS SHOULD CONDUCT YOUR OWN INVESTIGATION OF THE PROPERTY AND TRANSACTION.

KW COMMERCIAL- INLAND EMPIRE

3595-1 Inland Empire Blvd.

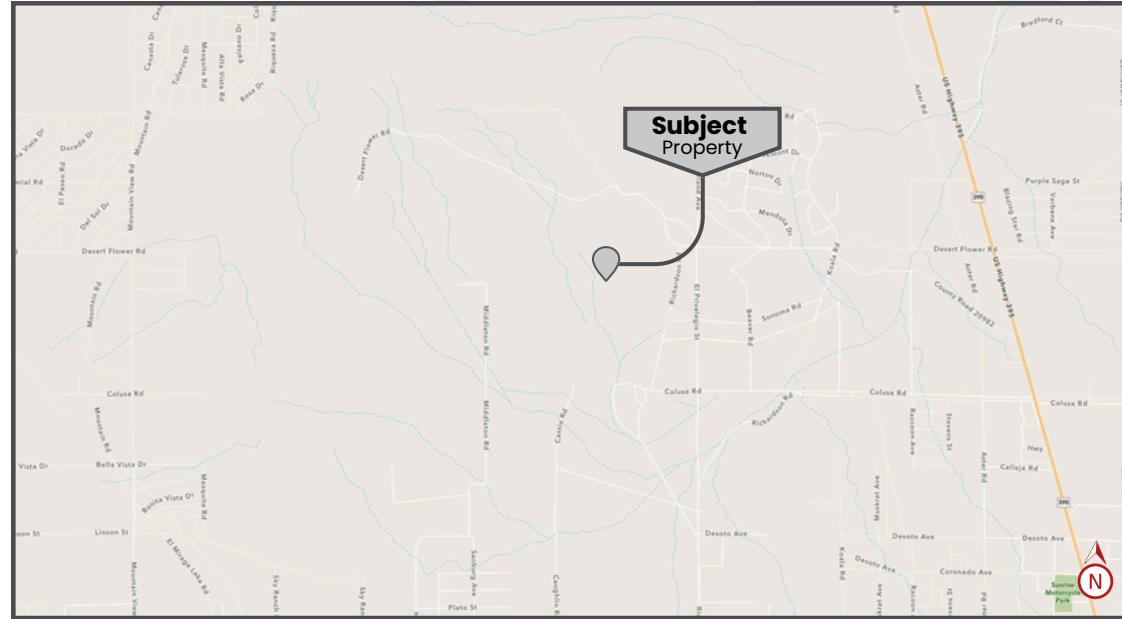
Suite 1250

Ontario, CA 91764

909.980.6868

www.kwcie.com

LOCAL MAP



REGIONAL MAP

