

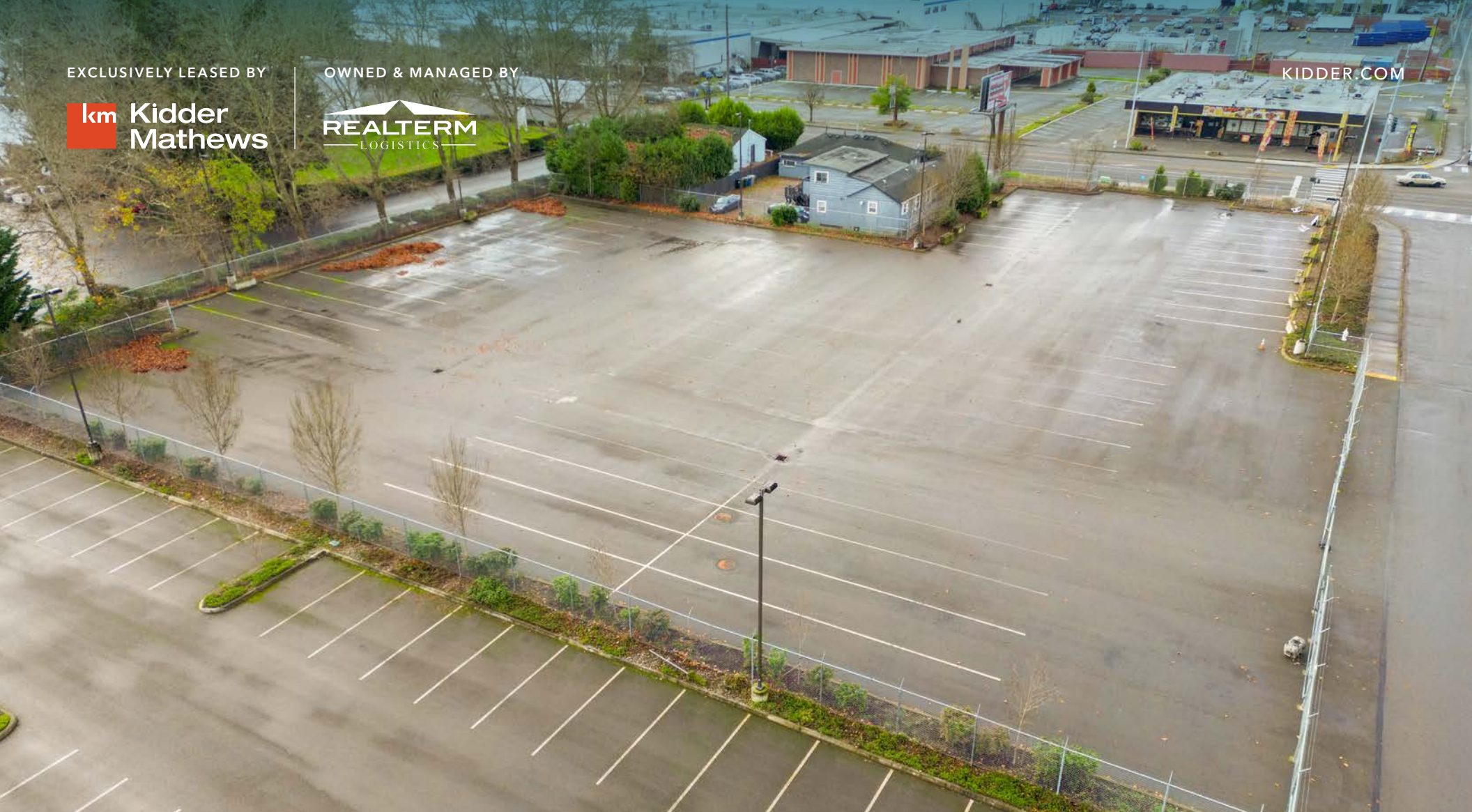
EXCLUSIVELY LEASED BY

km Kidder
Mathews

OWNED & MANAGED BY

REALTERM
LOGISTICS

KIDDER.COM

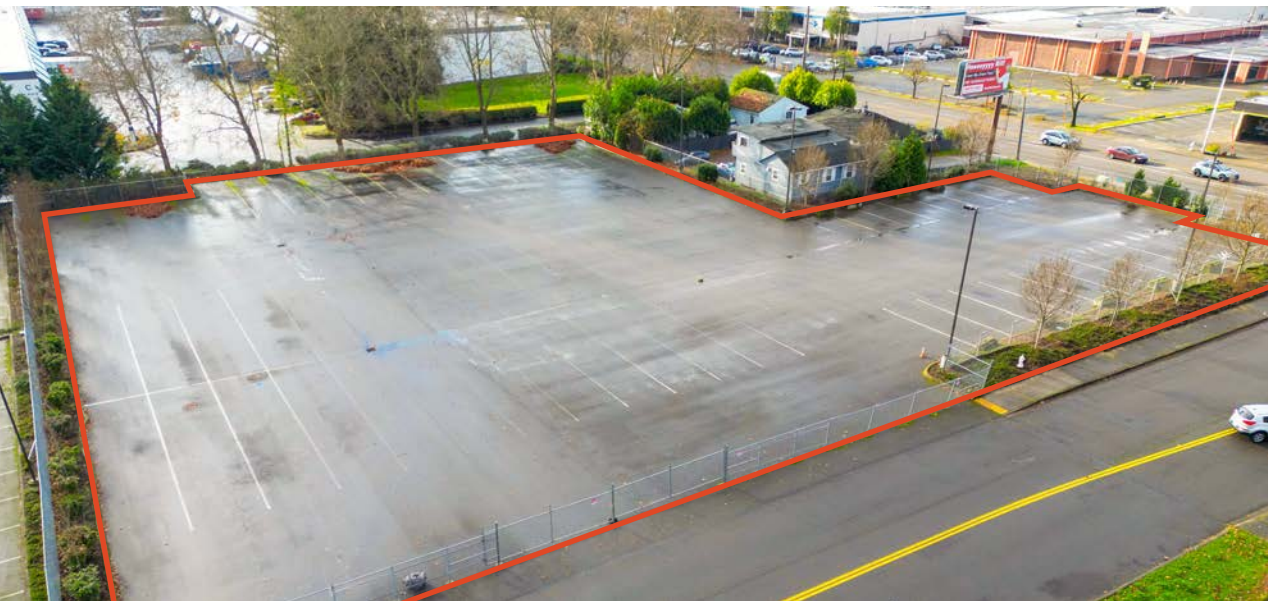


19604 84TH
AVE SOUTH

*1.3-Acre Industrial Yard for Lease
Available Now in Kent, WA with
Great Access to I-405 & SR-167*

KENT, WA

19604 84TH AVE S



PROPERTY HIGHLIGHTS

1.3 AC parcel

Fenced, paved, and lit

37 striped trailer stalls

21 striped car parks

Access off East Valley Highway

I2 (Mixed Industrial - City of Kent) zoning

Easy access to I-405 and SR-167

\$0.38 PSF, NNN
- \$21,519/month base rent

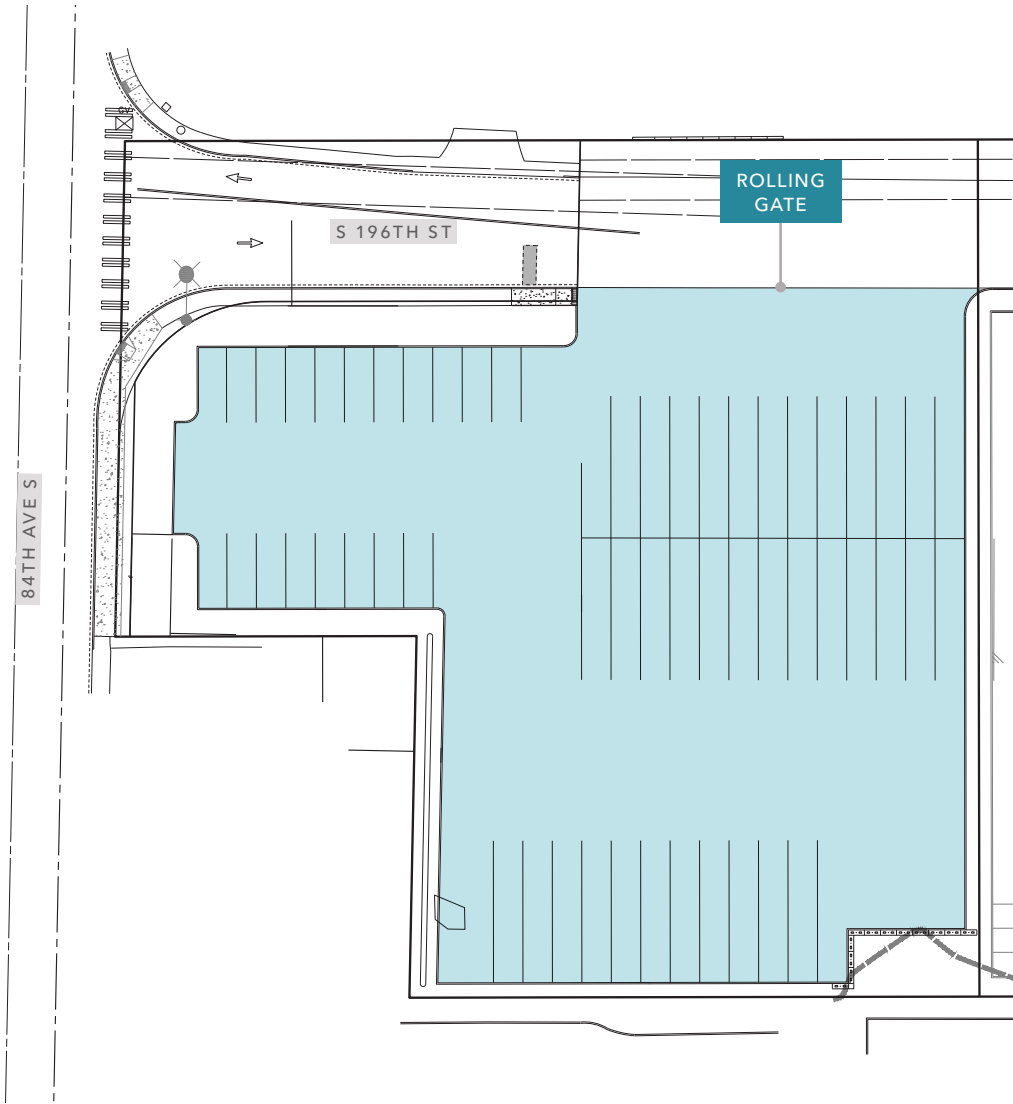
→ ZONING MAP

→ ZONING TABLE

1.5 AC
AVAILABLE

\$0.38 PSF
+ NNN LEASE RATE

SITE PLAN



1.3 AC

AVAILABLE

37

STRIPED TRAILER STALLS

21

STRIPED CAR PARKS



EXCLUSIVELY LEASED BY



OWNED & MANAGED BY



Exclusively listed by

KRAIG HEETER, SIOR
Executive Vice President
206.248.7313
kraig.heeter@kidder.com

MATT MCLENNAN, SIOR, CCIM
Executive Vice President
253.722.1458
matt.mclennan@kidder.com

KIDDER.COM

This information supplied herein is from sources we deem reliable. It is provided without any representation, warranty, or guarantee, expressed or implied as to its accuracy. Prospective Buyer or Tenant should conduct an independent investigation and verification of all matters deemed to be material, including, but not limited to, statements of income and expenses. Consult your attorney, accountant, or other professional advisor. All Kidder Mathews designs are the sole property of Kidder Mathews. Branded materials and layouts are not authorized for use by any other firm or person.