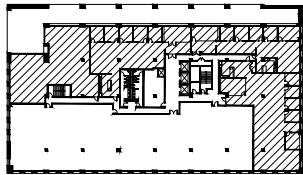
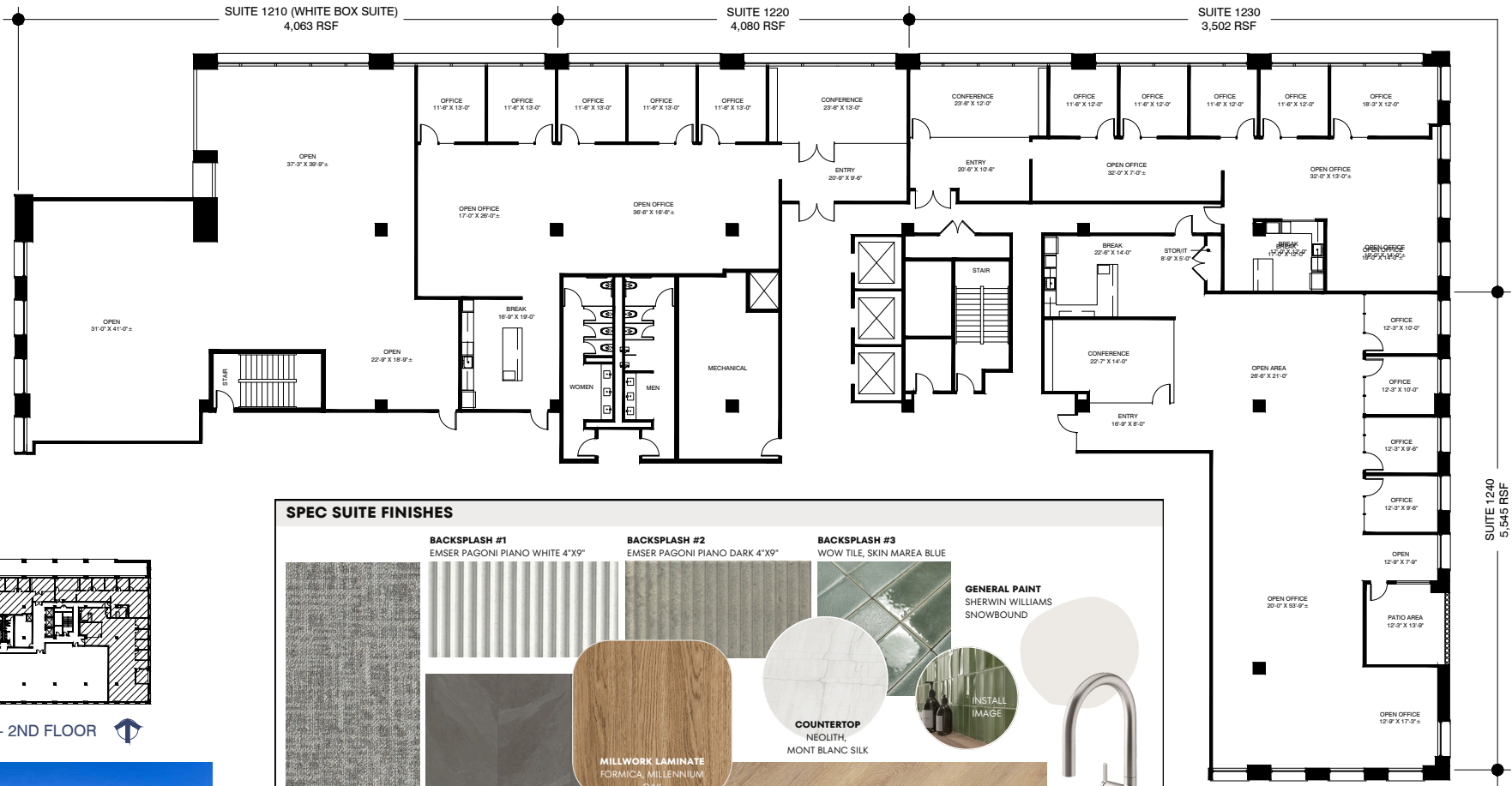


# SUITES 1210/1220/1230/1240 | 17,190 RSF



KEYPLAN - 2ND FLOOR



### SPEC SUITE FINISHES

<p><b>BACKSPLASH #1</b> EMSER PAGONI PIANO WHITE 4"X9"</p>	<p><b>BACKSPLASH #2</b> EMSER PAGONI PIANO DARK 4"X9"</p>	<p><b>BACKSPLASH #3</b> WOW TILE, SKIN MAREA BLUE</p>	<p><b>COUNTERTOP</b> NEOLITH, MONT BLANC SILK</p>	<p><b>GENERAL PAINT</b> SHERWIN WILLIAMS SNOWBOUND</p>	<p><b>INSTALL IMAGE</b></p>	<p><b>FAUCET</b> KOHLER COMPONENTS VIBRANT STAINLESS</p>
<p><b>CARPET TILE</b> MOHAWK GENTLE GROUNDS DAYLIGHT 12"X32"</p>	<p><b>PORCELAIN TILE</b> THORNTREE, BRAZILIAN SLATE ELEPHANT GREY, 24X48 OR 32X32</p>	<p><b>LVT FLOORING</b> FLOORET NAKAN, 9"X72"</p>				

**MILLWORK LAMINATE**  
FORMICA, MILLENNIUM  
OAK



**THE PLAZA AT SOLANA**  
BUILDING 1 | 1301 SOLANA BLVD. WESTLAKE, TX 76262

KOLBY DICKERSON - 214.534.1599  
kdickerson@txreproperties.com  
SAM DAVIS - 214.684.7197  
sdavis@txreproperties.com