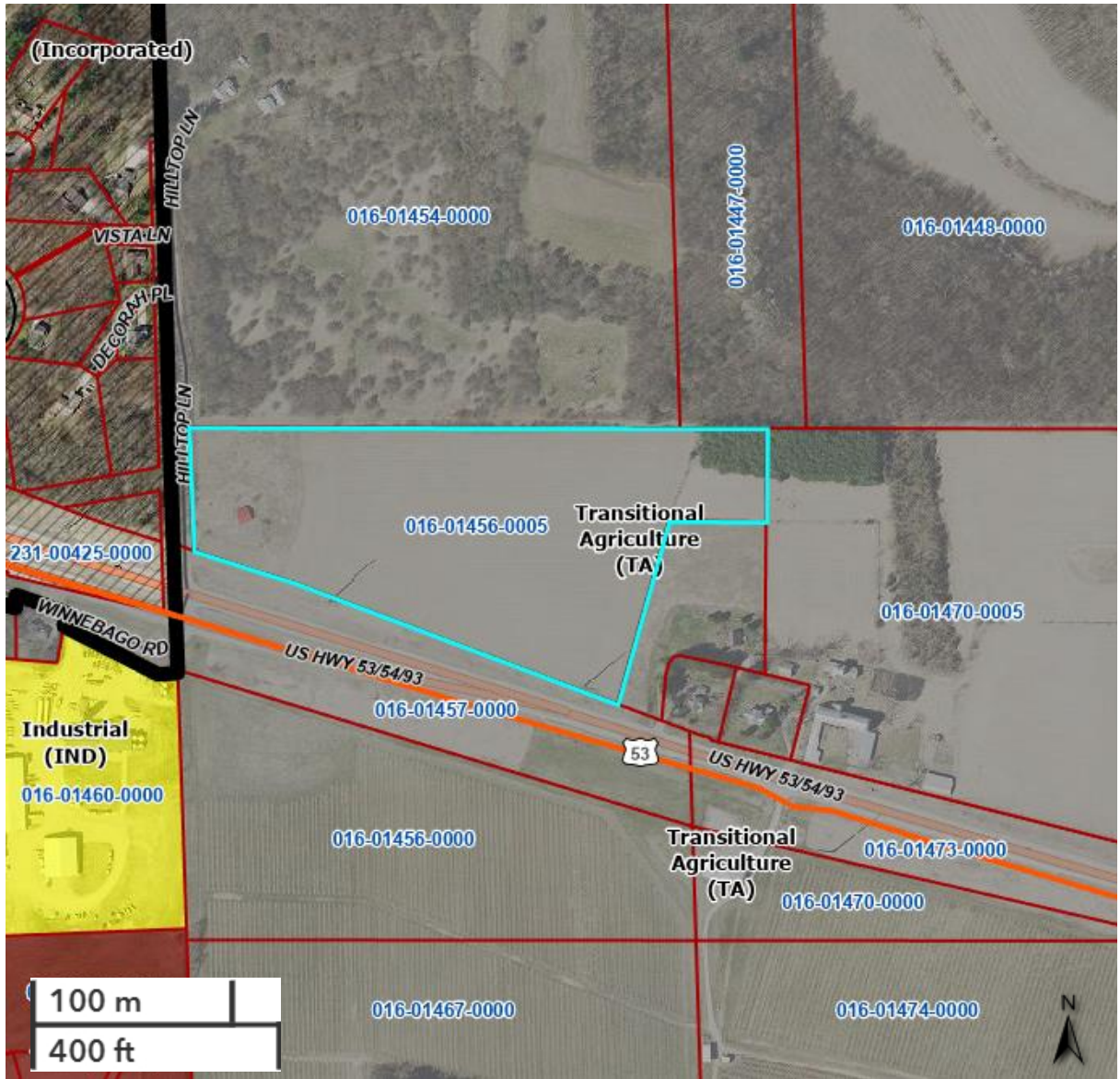


CAG3, LLC

Created by: null



- ▭ Parcels
- ▭ Parcel Numbers
- ▭ Mines
- ▨ In Development
- ▨ Annexed
- ▨ Operational
- County Zoning
- ▭ Exclusive Agriculture (EA)
- ▭ Exclusive Agriculture 2 (EA 2)
- ▭ Primary Agriculture (PA)
- ▭ Rural Residential (RR)
- ▭ Residential - 8 (R-8)
- ▭ Residential - 20 (R-20)
- ▭ Commercial (C)
- ▭ Industrial (IND)
- ▨ Commercial/Industrial (C/I)
- ▭ Institutional (INST)
- ▭ Transitional Agriculture (TA)
- ▭ Environmental Significance (ES)
- ▭ Right of Way (ROW)
- ▨ Residential Public Utilities (RPU)
- ▨ (Incorporated)
- ▨ NULL
- ▭ Existing Business
- Roads
- ▬ Interstate
- ▬ US Hwy
- ▬ State Rd
- ▬ County Rd
- ▬ Town Rd
- ▬ City St
- ▬ Private Rd
- ▬ Wayside
- ▬ Scenic Overlook
- ▬ Access
- ▬ 12
- USA Major Highways
- ▬ Limited Access
- ▬ Highway
- ▬ Major Road
- ▬ Local Road
- ▬ Pedestrian Way

Date created: 10/15/2025  
 Last Data Uploaded: 10/14/2025 10:00:18 PM  
 Developed by

