

For Lease

1235 Commerce Road

Morrow, Georgia 30260

159,666 SF



NICK PEACHER
VICE PRESIDENT
nicholas.peacher@streamrealty.com
404.962.8650



ANDREW ASHMORE
ANALYST
andrew.ashmore@streamrealty.com
770.315.8280

No warranty or representation, expressed or implied, is made as to the accuracy of the information contained herein, and same is submitted subject to error and omissions.

1235 Commerce Road

Morrow, Georgia 30260

159,666 SF



PROPERTY HIGHLIGHTS - SUITE E

Available SF	3,168
Office SF	1,195
Ceiling Height	20'
Loading	1 Grade Level Door
Lighting	LED



LOCATION:

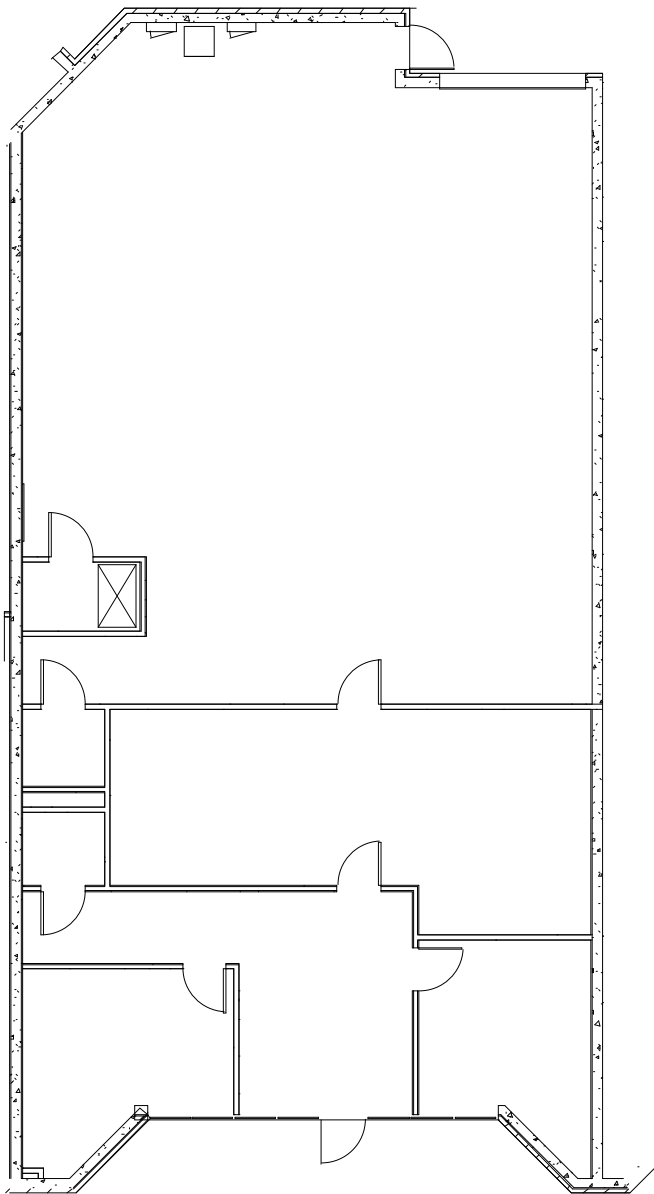
- Superior access to I-75
- Superior access to I-285
- Superior access to air cargo terminal and Port of Savannah

For Lease

1235 Commerce Road

Morrow, Georgia 30260

159,666 SF



Suite E
3,168 SF

No warranty or representation, expressed or implied, is made as to the accuracy of the information contained herein, and same is submitted subject to error and omissions.