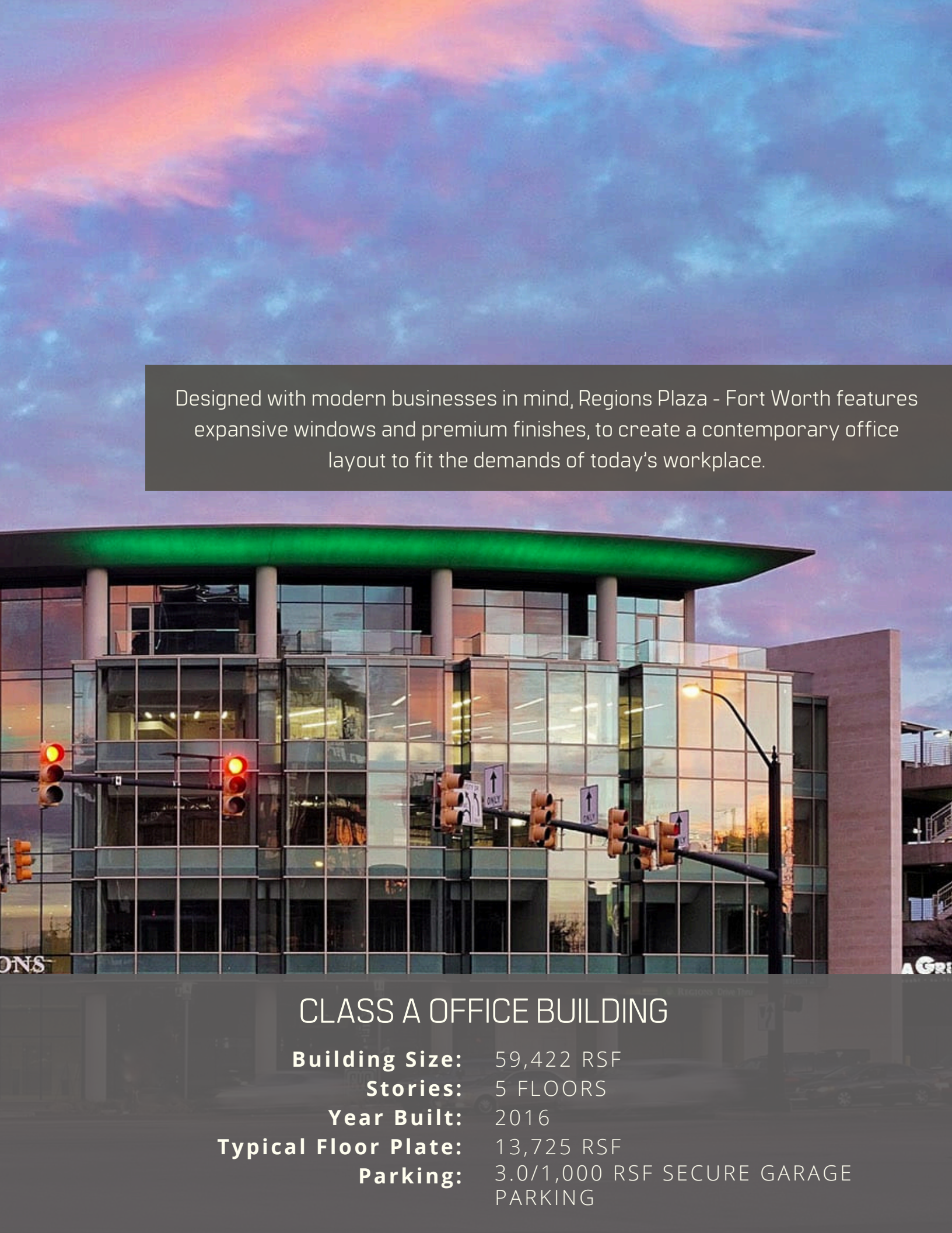


# REGIONS PLAZA-FORT WORTH

3017 W 7TH ST, FORT WORTH 76107

REDEFINING WORKSPACES  
IN THE **HEART** OF FORT WORTH

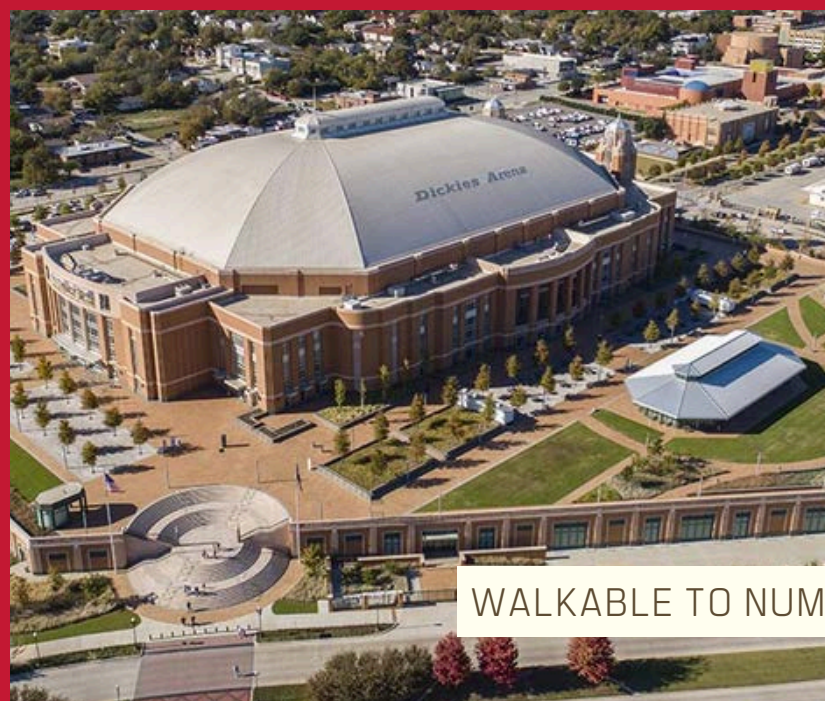


A photograph of the Regions Plaza office building in Fort Worth, Texas, at dusk. The building features a prominent curved, cantilevered top section illuminated with a vibrant green light. The main structure is composed of large glass panels reflecting the colorful sky, which transitions from a deep blue to a soft pink and orange. The building is situated at a street intersection, with traffic lights and street signs visible in the foreground. The overall atmosphere is modern and sophisticated.

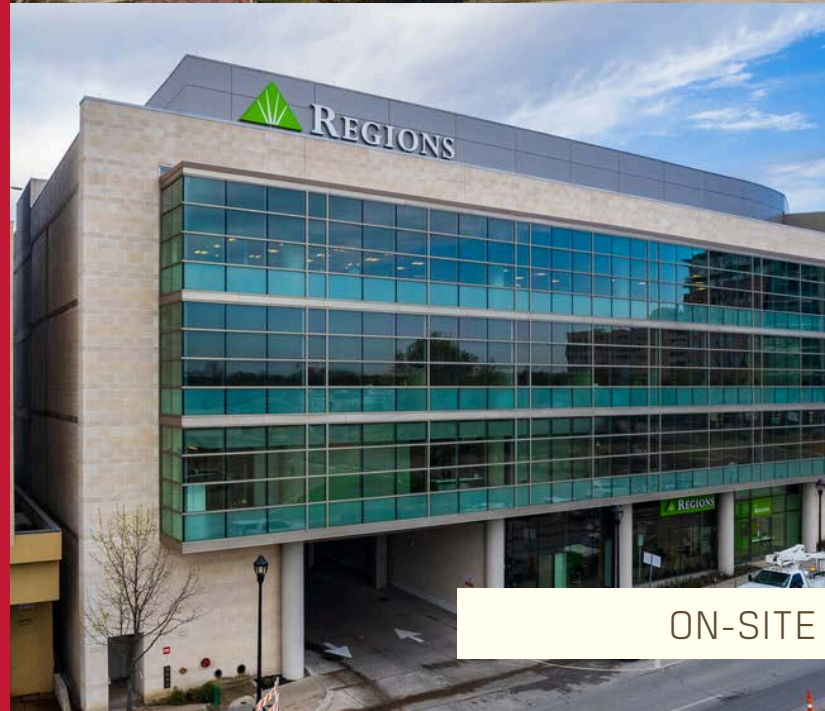
Designed with modern businesses in mind, Regions Plaza - Fort Worth features expansive windows and premium finishes, to create a contemporary office layout to fit the demands of today's workplace.

## CLASS A OFFICE BUILDING

<b>Building Size:</b>	59,422 RSF
<b>Stories:</b>	5 FLOORS
<b>Year Built:</b>	2016
<b>Typical Floor Plate:</b>	13,725 RSF
<b>Parking:</b>	3.0/1,000 RSF SECURE GARAGE PARKING



WALKABLE TO NUMEROUS AMMENITIES



ON-SITE BANKING








HIGH END OFFICE FINISHES



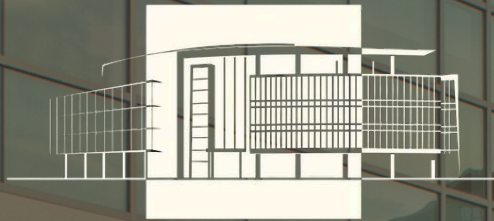
SIGNAGE OPPORTUNITIES AVAILABLE

# EXPLORE FORT WORTH

Walk Score: 94- Walkers Paradise  
Over 80,000 vehicles per day  
5-minutes [0.75 miles] from Dickies Arena  
1.5 Miles from Downtown

-  FITNESS
-  ENTERTAINMENT
-  RESTAURANT/BAR
-  APARTMENTS
-  MUSEUMS





# REGIONS PLAZA-FORT WORTH

3017 W 7TH ST, FORT WORTH 76107

Copyright ©2024 Citadel Partners, LLC. The information contained herein was obtained from sources deemed reliable and is believed to be true; it has not been verified and as such, cannot be warranted nor form any part of any future contract.

CULLEN DONOHUE

(817) 809-6237

CDONOHUE@CITADELPARTNERSUS.COM

ANDY GOLDSTON, CCIM

(817) 809-6236

AGOLDSTON@CITADELPARTNERSUS.COM

BRECK BESSERER

(817) 809-6234

BBESSERER@CITADELPARTNERSUS.COM

**CITADEL  
PARTNERS**