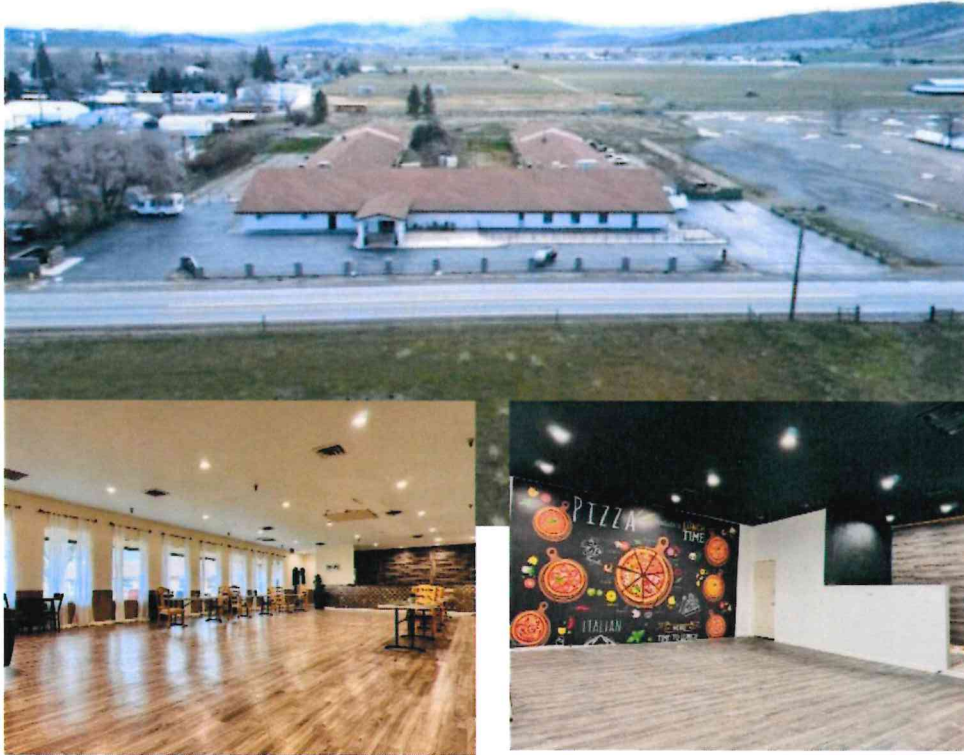


# Commercial Property on I-5

**John L. Scott**  
REAL ESTATE

## 424 County Highway A12 Grenada, CA



## Potential Travel Center in Northern California

This property, known as Grenada Gardens, has most recently been a senior care facility. Originally built in the early 80's, as a motel, restaurant and lounge, it has had several versions of remodel. Today nearly 2/3's of the 30,000 sq. ft. structure has a beautiful grand entry, large dining facility, day spa and theater area, offices, a large commercial kitchen and paved parking. Two brand new spaces have been created along the front for convenience store and coffee house/restaurant. 28 of the 56 private rooms w/ full or half baths have been remodeled and used for senior occupants. The building occupies approximately 1 acre of this 6.5 acre property. The balance would be ideal for mini storage, RV storage, additional parking or ???. This location near the I-5 interchange would be a terrific full service Travel Center. It is a popular pull off for commercial truck drivers who utilize the parking areas on either side of the neighboring fuel facility.

### FEATURES

- 6.50 Acres
- Building Square Feet: 30,000
- Easy Access to I-5 North/South
- Possible Parcel Split into Multi-Uses
- Fueling Facilities adjacent to property
- Plans for Travel Center include; Coffee house/restaurant, beauty salon and grocery store.
- 56 Private Rooms
- Large Commercial Kitchen
- Nice Interior/Exterior Common Spaces



[View Photos](#)

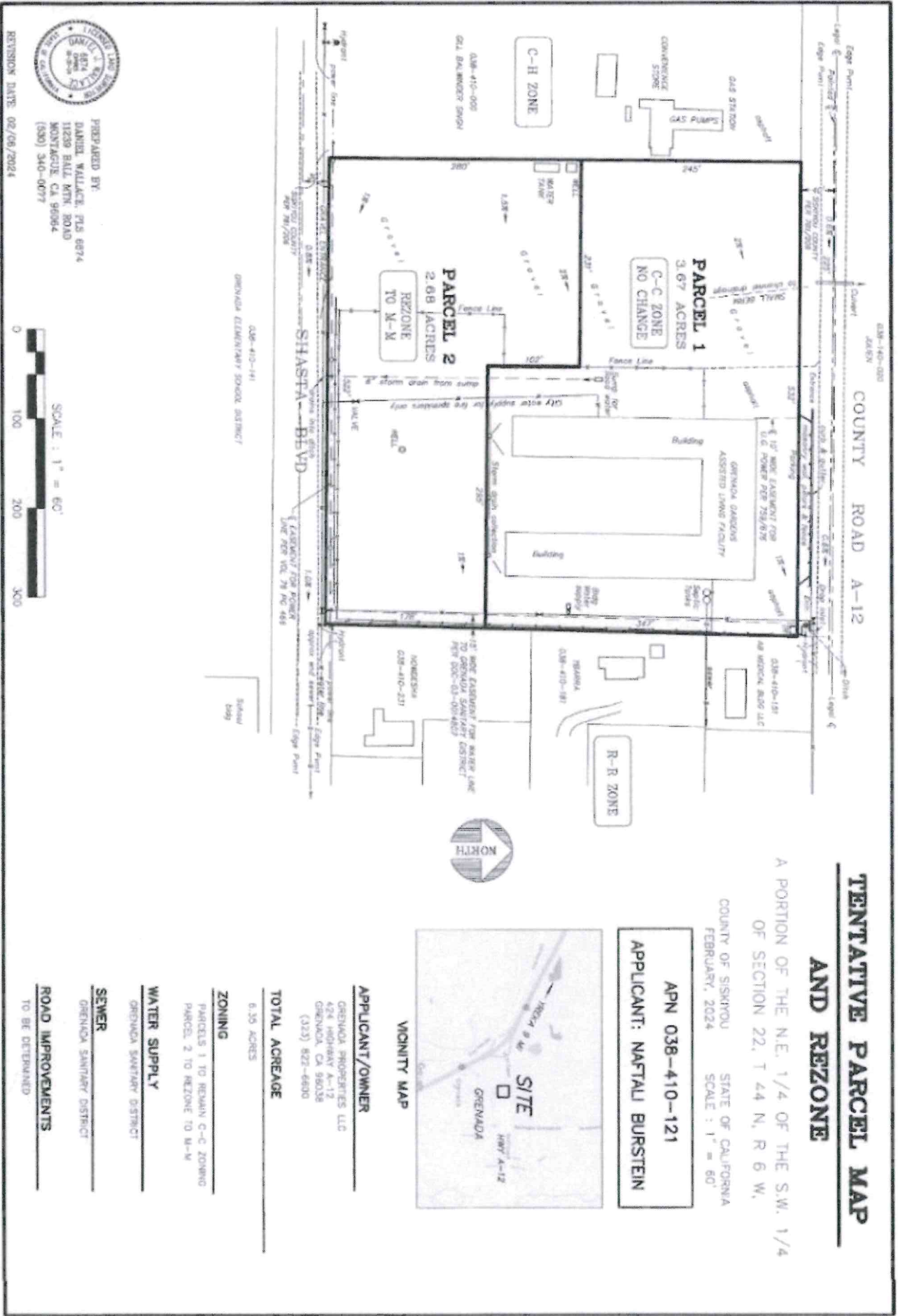


**Chris Kutzkey**  
Real Estate Broker, DRE# 498725  
530-842-7319 ext 101  
ckutzkey@yahoo.com  
chrisk.johnlscott.com



Offered at \$3,400,000

All listings may not be displayed in a specific marketplace as some Brokers or property owners may opt out. If your property is currently listed with another broker, this mailing is not intended as a solicitation of that listing.



PREPARED BY:  
 DANIEL WALLACE, PLS 6874  
 11239 BALT MTR. ROAD  
 MONTAGUE, CA 95064  
 (530) 340-0077

REVISION DATE: 02/08/2024

