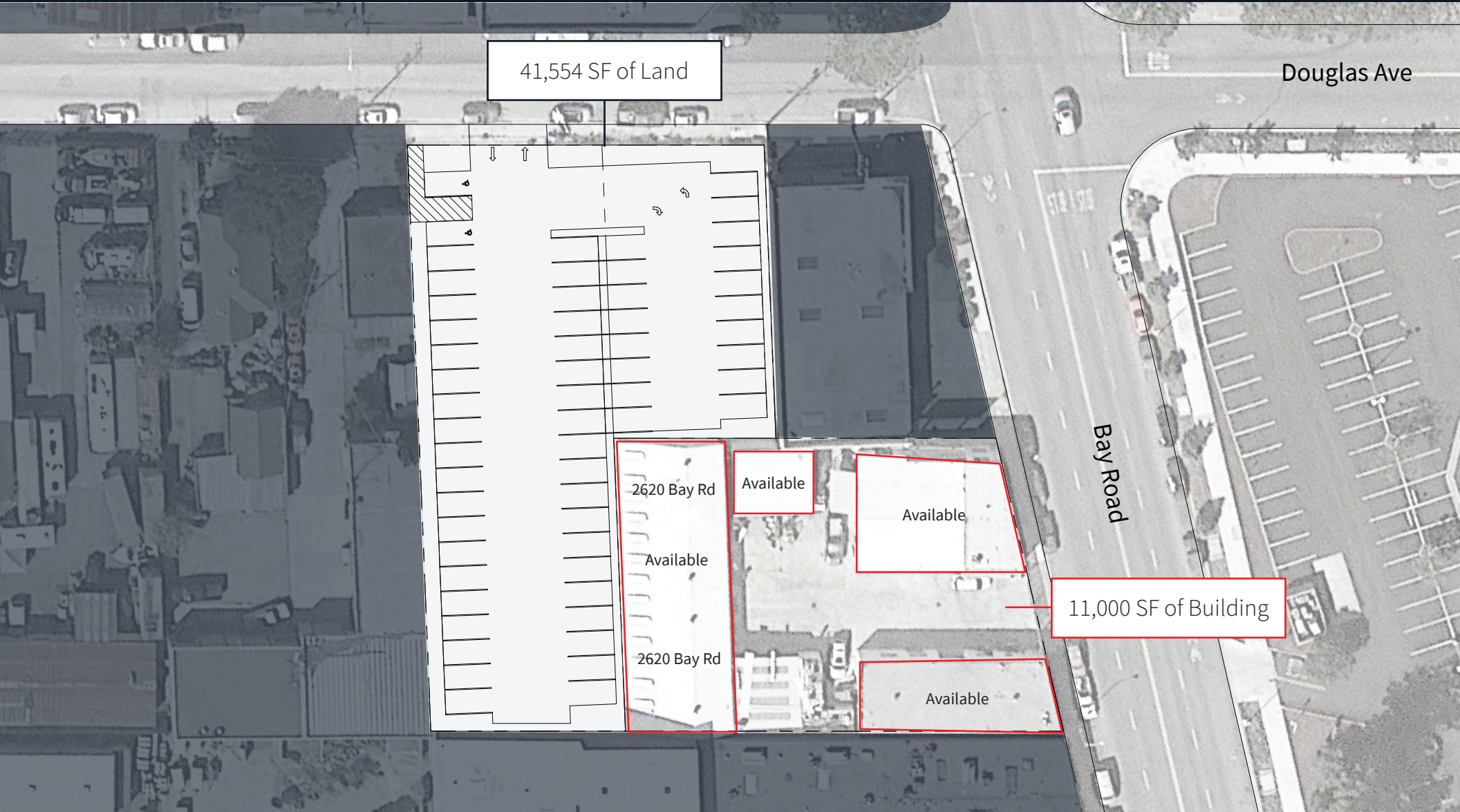
 **JLL** SEE A BRIGHTER WAY

For lease

2610 - 2620 Bay Road

11,000 SF building on
41,554 SF of land



2610 - 2620 Bay Road / Redwood City

Size

11,000 SF building on
41,554 SF of land

Rate

\$48,500 IG per month

Availability

Available

Term

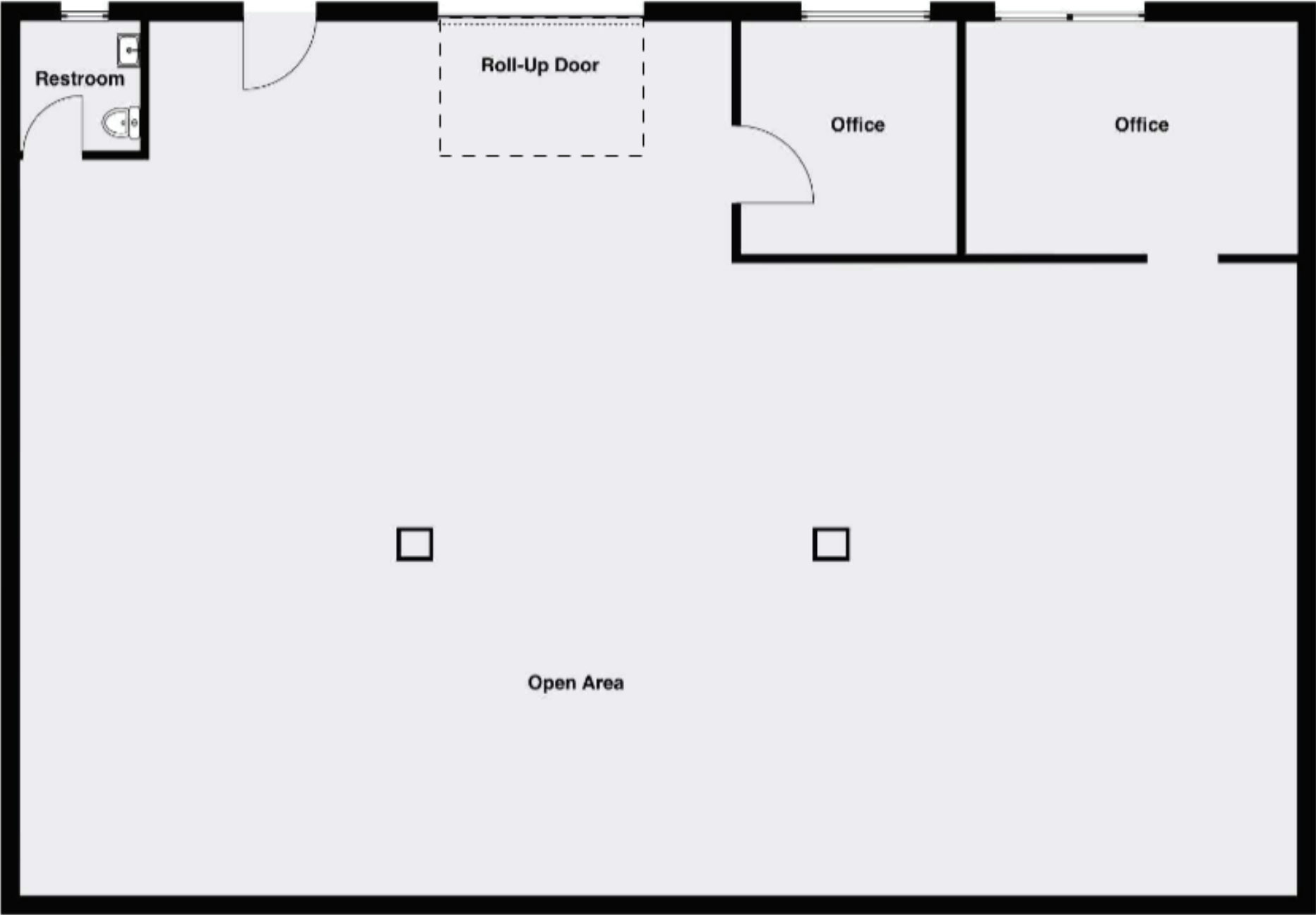
Flexible

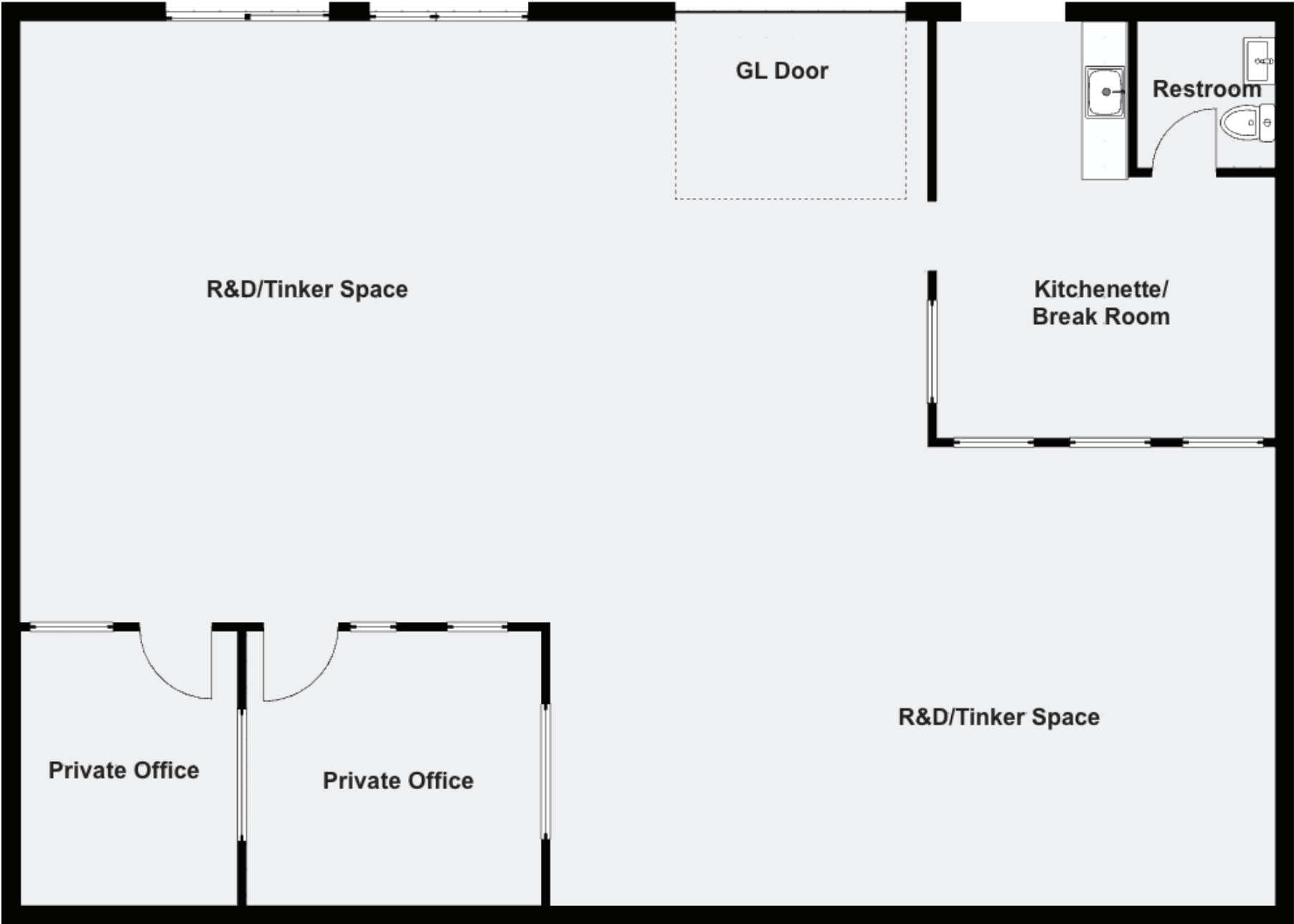
Details

- Awesome opportunity to lease almost an acre in Redwood City
- Great industrial opportunity
- Located directly across from Stamford Redwood City's new development
- Great breakdown of space and access to the lot
- Divisible



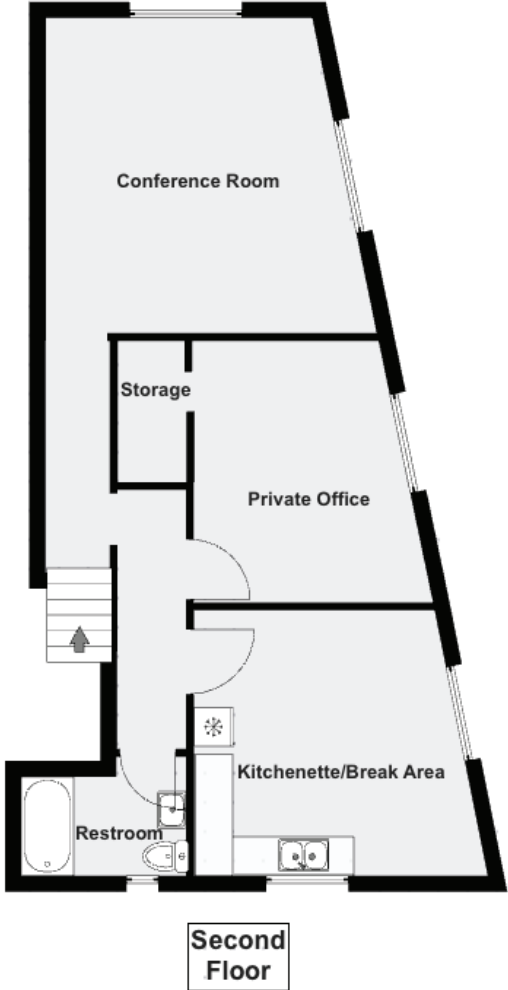
2620 Bay Road Unit A / Redwood City







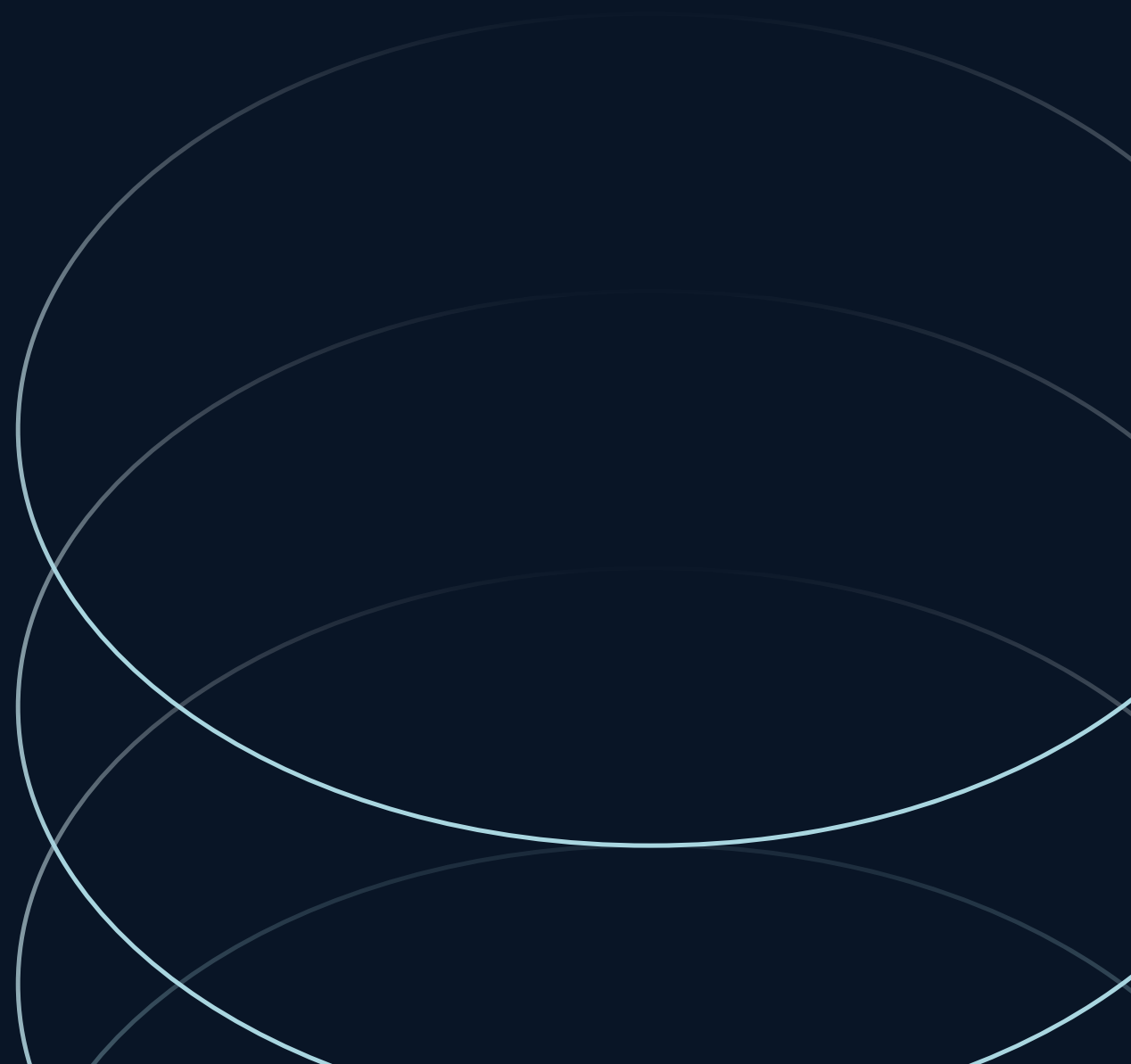
Ground Floor



Second Floor

2610 - 2620 Bay Road / Redwood City





Joey Alftin

Lic. 02086817

joey.alftin@jll.com

650-520-0324

Beto Santana Ruiz

Lic. 02222480

beto.santana@jll.com

385-250-7852