

FOR SALE OR LEASE

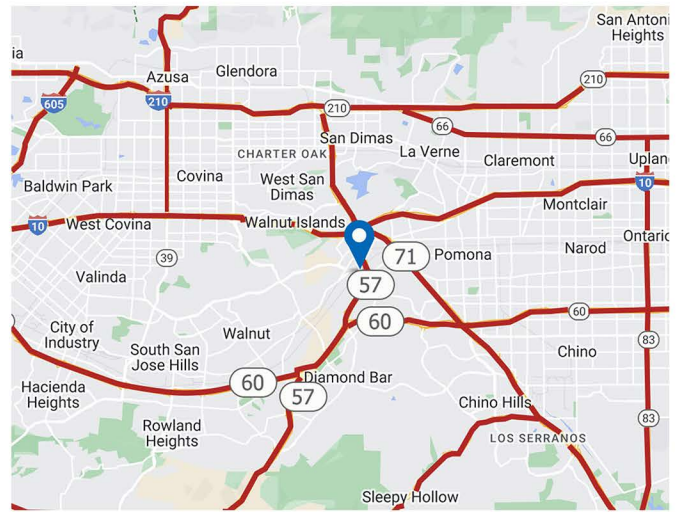
1,120 SF AVAILABLE

3191 W TEMPLE AVE SUITE 165, POMONA CA 91768



Space Highlights:

- Suite 165: 1,120 SF Available
- Located in 1st Floor with Large Windows
- in Warm Shell Condition
- Ample Parking 4.8/1000 SF Parking Ratio
- Medical Use Approved
- After Hour Security Access



FOR MORE INFORMATION, PLEASE CONTACT.



Ricky Lee, MBA
Broker, Loan Consultant | License ID # 01932116
P: 909-348-3956
E: rickyjessie.lee@gmail.com

Daniel Huang
Senior Associate | License ID # 01959072
PYC Commercial | Li01884917
P: 626-382-8240
E: 626care1@gmail.com

RJ REALTY
888 BREA CANYON ROAD SUITE 200
DIAMOND BAR, CA 91789
P: 909-895-7770
CORP ID 02201099

The information contained herein is obtained from sources believed to be reliable. However, we have not verified it and make no guarantees, warranties or representations as to the completeness or accuracy thereof. The presentation of this property is used for example and is submitted subject to errors, omissions, change of price or conditions, and is subject to prior sale, lease or withdrawal without notice.

FOR SALE OR LEASE

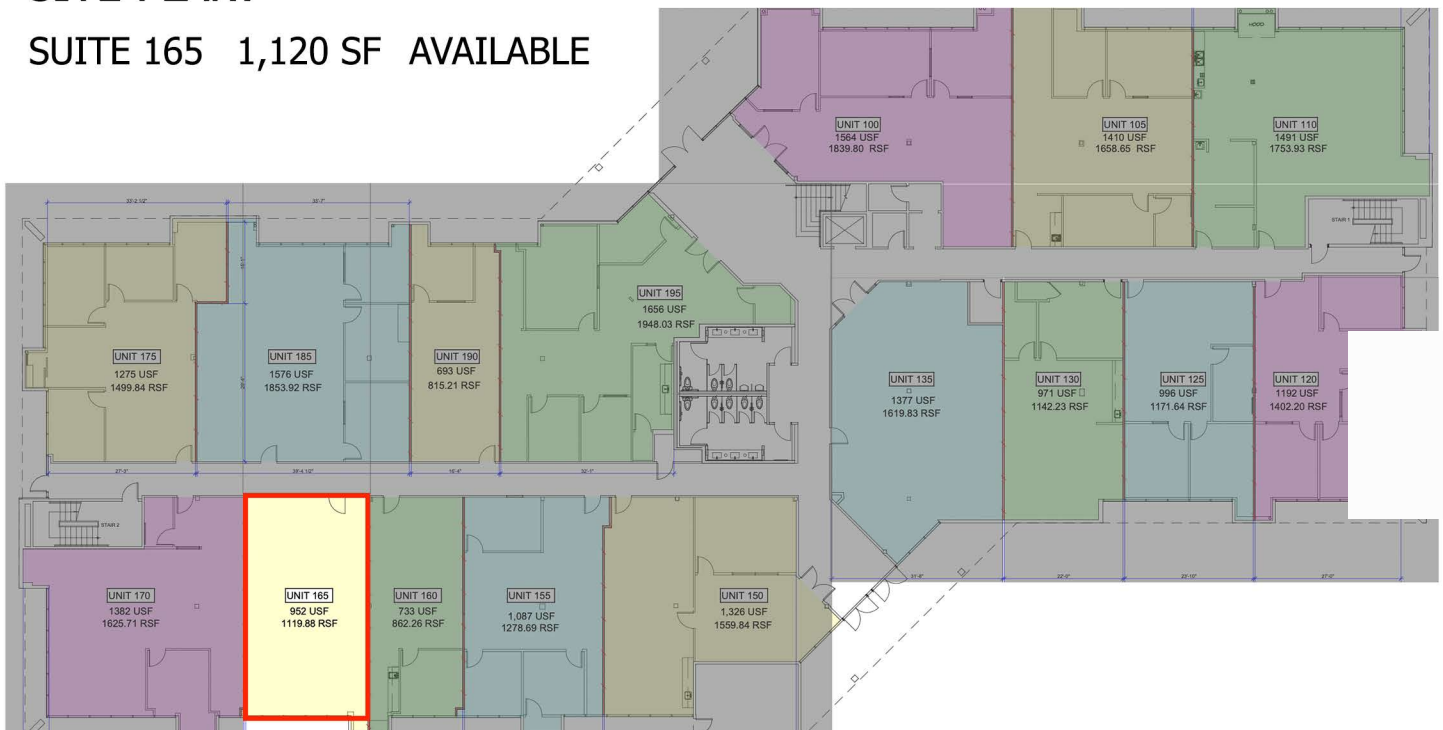
1,120 SF AVAILABLE

3191 W TEMPLE AVE SUITE 165, POMONA CA 91768



SITE PLAN:

SUITE 165 1,120 SF AVAILABLE



FOR MORE INFORMATION, PLEASE CONTACT:



Ricky Lee, MBA
Broker, Loan Consultant | License ID # 01932116
P: 909-348-3956
E: rickyjessie.lee@gmail.com

Daniel Huang
Senior Associate | License ID # 01959072
PYC Commercial | 01868062
P: (626)382-8240
E: 626care1@gmail.com



RJ REALTY
888 BREA CANYON ROAD SUITE 200
DIAMOND BAR, CA 91789
P: 909-468-2727
CORP ID 02201099

The information contained herein is obtained from sources believed to be reliable. However, we have not verified it and make no guarantees, warranties or representations as to the completeness or accuracy thereof. The presentation of this property is used for example and is submitted subject to errors, omissions, change of price or conditions, and is subject to prior sale, lease or withdrawal without notice.