

LEASE

EXCELLENT WAREHOUSE WITH OFFICE IN BOTHELL

17514 Bothell Way NE Bothell, WA 98011



OFFERING SUMMARY

| | |
|---------------|---------------------|
| Lease Rate: | \$21.50 SF/yr (NNN) |
| Available SF: | 3,000 SF |
| Lot Size: | 0.38 Acres |
| Zoning: | 522 Corridor |

PROPERTY OVERVIEW

This versatile warehouse, office, and retail suite offers an excellent opportunity for the right business, ideally located just off the high-traffic Bothell Everett Highway/522 corridor. With three bays featuring 16-foot ceilings, two bathrooms, a shower, and three garage bays, the space is well-equipped to support a wide range of industrial or retail uses, including car detailing. The functional layout allows for efficient operations, storage, or customer-facing activities. Its prominent location provides strong visibility and convenient access for both customers and vendors. Zoned for the 522 Corridor, this flexible suite can be tailored to suit a variety of business needs.

Nicole Wright-Neumiller
(425) 591-5935
NicoleWNeumiller@gmail.com

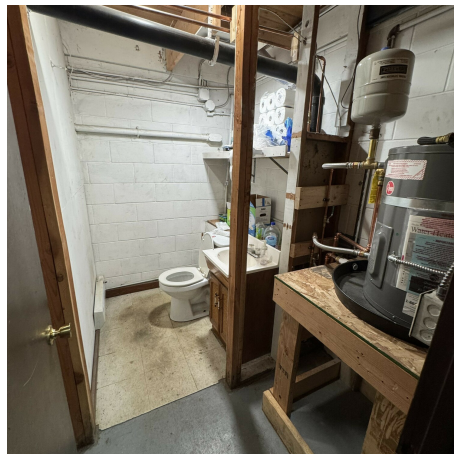
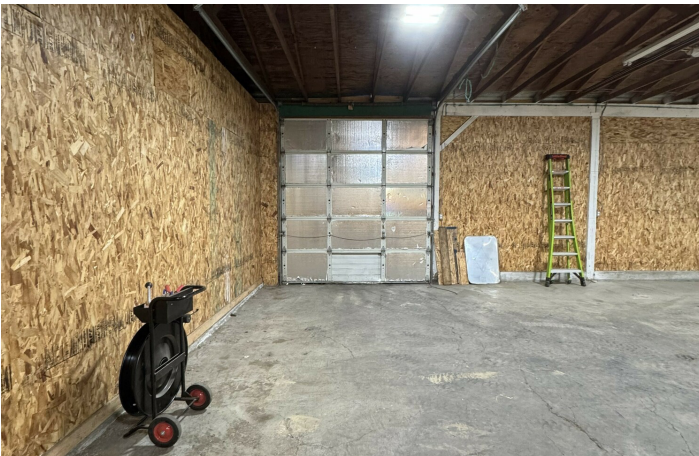
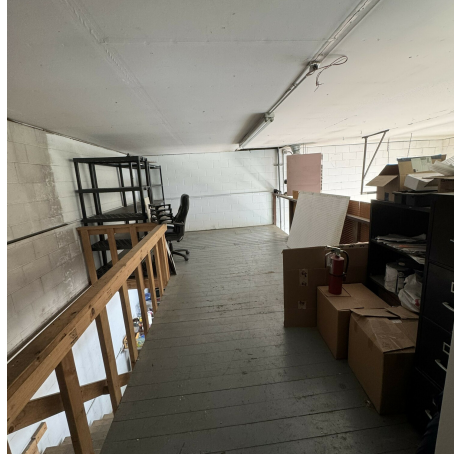


**COLDWELL BANKER
COMMERCIAL**
DANFORTH

LEASE

EXCELLENT WAREHOUSE WITH OFFICE IN BOTHELL

17514 Bothell Way NE Bothell, WA 98011



Nicole Wright-Neumiller
(425) 591-5935
NicoleWNeumiller@gmail.com



**COLDWELL BANKER
COMMERCIAL**
DANFORTH

LEASE

EXCELLENT WAREHOUSE WITH OFFICE IN BOTHELL

17514 Bothell Way NE Bothell, WA 98011



Nicole Wright-Neumiller
(425) 591-5935
NicoleWNeumiller@gmail.com



**COLDWELL BANKER
COMMERCIAL**
DANFORTH