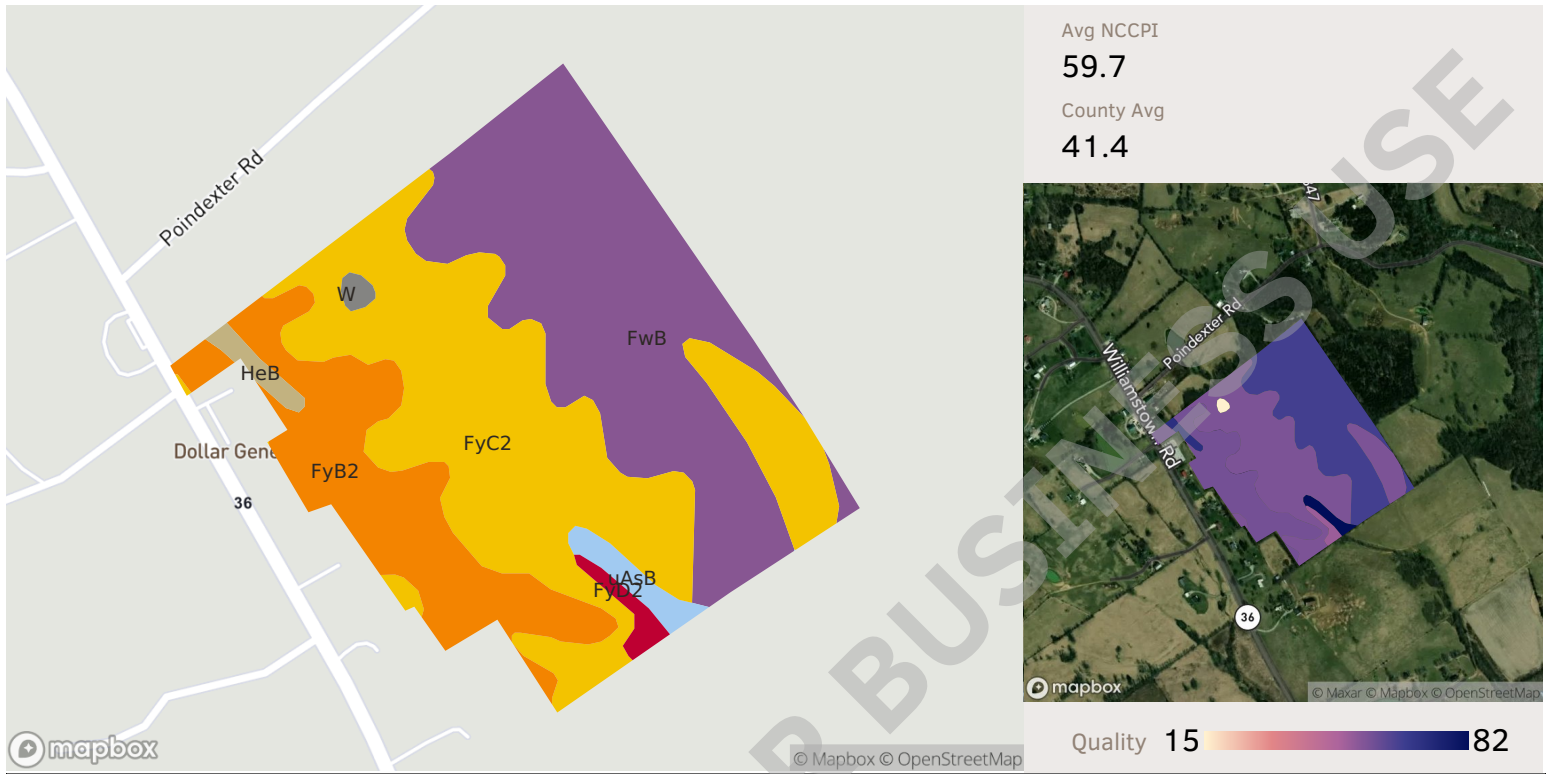


1 field, 61 acres in Harrison County, KY


Source: NRCS Soil Survey

All fields

61 ac.

Soil Code	Soil Description	Acres	Percentage of Field	Soil Class	NCCPI
FyC2	Faywood silty clay loam, 6 to 12 percent slopes, eroded	24.84	40.5%	3	55.7
FwB	Faywood silt loam, 2 to 6 percent slopes	22.70	37.0%	2	64.2
FyB2	Faywood silty clay loam, 2 to 6 percent slopes, eroded	11.20	18.3%	2	56.9
uAsB	Ashton silt loam, 2 to 6 percent slopes	1.06	1.7%	2	87.9
FyD2	Faywood silty clay loam, 12 to 20 percent slopes, eroded	0.65	1.1%	4	51.1
HeB	Heitt silt loam, 2 to 6 percent slopes	0.63	1.0%	2	69.9
W	Water	0.27	0.4%		N/A
		61.08	99.6%		59.7