



Subject Property



In Association with Scott Reid & ParaSell, Inc.
A Licensed Indiana Broker #RC51900187

Offering Memorandum

Hard Corner Development Site

Indianapolis, Indiana [View Map](#)

7444 Pendleton Pike, Indianapolis, IN 46226

Rare Hard Corner Opportunity with C4 Commercial Zoning
Irreplaceable Real Estate, Prime I-465 Frontage
+30K Vehicles Per Day

Advisory Team

Marc Merchant

Vice President
MMerchant@centurypartnersre.com
(916) 995-3298 | CA DRE LIC #02117365

Matt Kramer

Managing Partner
MKramer@centurypartnersre.com
(818) 601-4595 | CA DRE LIC #01995909

Joshua Berger

Managing Partner
JBerger@centurypartnersre.com
(310) 270-3308 | CA DRE LIC #01984719

Scott Reid

ParaSell, Inc. - Broker of Record
Scott@parasellinc.com
(949) 942-6578 | IN License #RB19001284

 [Contact Team](#)



Century Partners Real Estate, Inc.
Los Angeles, California
(310) 362-4303 | CA DRE LIC #02235147

In Association with Scott Reid & ParaSell, Inc.
A Licensed Indiana Broker #RC51900187



Immediate Value-Add Opportunity

Hard Corner Development Site



Price
\$700,000

Land Size:
± 0.77 Acres

Investment Highlights

- Direct frontage to Pendleton Pike (30,000 VPD), primary retail corridor in the area.
- Immediate Value Add Opportunity on Desirable Hard Corner
- Commercial zoning allows for a variety of uses, ideal for QSR, Gas Station, Car Wash, or other retail development.
- Located directly off I-465 exit ramp.
- Across the freeway from Menard's, the dominant home improvement retailer for the region

Location Highlights

- High traffic volume from Pendleton Pike and immediate proximity to I-465.
- 30,000 VPD on Pendleton Pike (main thoroughfare)
- I-465 averages 162,000+ vehicles per day (VPD) during peak times (Source: INDOT traffic data)
- Densely populated submarket with a population of 222,000+ in the 5-mile radius

T Mobile

R&C
REPAIR & CENTER

SUBWAY



O'Reilly AUTO PARTS
PROFESSIONAL PARTS PEOPLE

ROSES

Batteries + Bulbs



CVS

Advance Auto Parts



WAFFLE HOUSE



AT&T



SHERWIN WILLIAMS

Pendleton Pike - 30,000 VPD

I-465 Offramp

**Hard-Corner Development Opportunity
with Commercial Zoning**
Ideal for QSR, Gas Station, Car Wash or other Retail



INTERSTATE 465 162,000 VPD



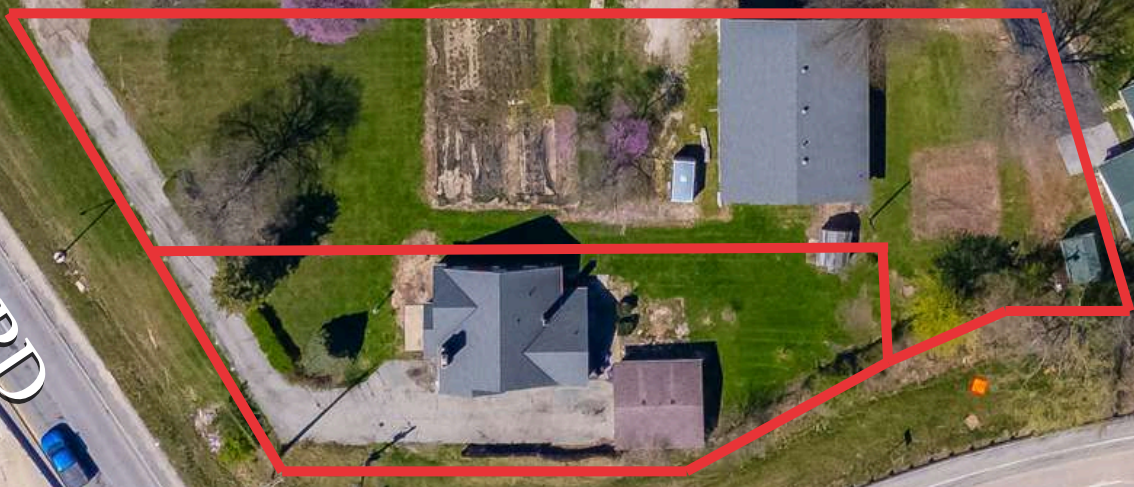
Subject Property



Pendleton Pike - 30,000 VPD

High Traffic Trade Area
90,000+ Population within 3 Miles

Pendleton Pike - 30,000 VPD



Neighboring Strip Center Parcel Will Provide Cross Access

About Indianapolis

Indianapolis, Indiana is the state's capital and most populous city, serving as a major economic and cultural hub within the state. The city and its surrounding metropolitan area form a significant commercial center with a diverse economy. Key industries include healthcare, life sciences, manufacturing, logistics, and finance. Indianapolis is home to major employers such as Eli Lilly and Company (a global pharmaceutical company), Anthem, Inc. (a health insurance provider), and various large hospital networks.

The city also benefits from its strategic location as a transportation crossroads, with significant interstate highway access and a large FedEx hub, contributing to its strength in logistics. Beyond its economic drivers, Indianapolis offers a growing downtown area with cultural attractions, including museums, sports venues (home of the Indianapolis Colts and the Indianapolis 500), and a developing culinary scene. The city boasts a moderate cost of living compared to many major metropolitan areas, and it is focused on continued growth and diversification of its economy.



Demographic Highlights

2 Million+

Projected Indianapolis–Carmel–Greenwood MSA Population by 2030

221,045

5-Mile Population

Radius	3-Mile	5-Mile
Population (2024)	90,017	221,045
Average Income	\$54,559	\$66,732
Households	35,292	89,619

Major Employers in Indianapolis



Advisory Team

Marc Merchant

Vice President

MMerchant@centurypartnersre.com

(916) 995-3298 | CA DRE LIC #02117365

Matt Kramer

Managing Partner

MKramer@centurypartnersre.com

(818) 601-4595 | CA DRE LIC #01995909

Joshua Berger

Managing Partner

JBerger@centurypartnersre.com

(310) 270-3308 | CA DRE LIC #01984719

Scott Reid

ParaSell, Inc. - Broker of Record

Scott@parasellinc.com

(949) 942-6578 | IN License #RB19001284

 [Contact Team](#)



Century Partners Real Estate, Inc.

Los Angeles, California

(310) 362-4303 | CA DRE LIC #02235147

In Association with Scott Reid & ParaSell, Inc.

A Licensed Indiana Broker #RC51900187



Confidentiality & Disclaimer Statement

This document has been prepared by Century Partners Real Estate, Inc. and ParaSell, Inc. and has received approval for distribution from all necessary parties. While every effort has been made to provide accurate information, neither Century Partners, ParaSell, Inc. nor the entities represented by Century Partners make any guarantees, warranties, or representations regarding the completeness of the materials presented in this document or in any other written or oral communications that have been transmitted or made available.

Certain documents may have been summarized, and these summaries do not claim to represent or constitute a legal analysis of the contents of those documents. Neither Century Partners, ParaSell, Inc. nor the entities represented by Century Partners assert that this document contains all-inclusive information or encompasses all the data you may require.

Any financial projections and/or conclusions presented in this document are provided solely for reference purposes and have been developed based on assumptions and conditions that were in effect at the time the evaluations were conducted. These projections and conclusions do not claim to reflect changes in economic performance, local market conditions, economic and demographic statistics, or other business activities subsequent to the date of this document's preparation. Recipients of this document are strongly encouraged to conduct their independent evaluation of the subject matter and/or asset(s) discussed in this document.