

# 2333 Dundas Street W

Office Space Steps from Dundas West Station

For Lease: Office and Retail

Dundas West  
Subway Station  
& UP Express

**Paul Cheevers\***  
Senior Vice President  
416.649.5949  
[pcheevers@lennard.com](mailto:pcheevers@lennard.com)

\*Broker

**Lennard:**

200-55 University Avenue, Toronto  
416.649.5920  
[lennard.com](http://lennard.com)



Virtual Tours  
Available



# 2333 Dundas Street W

At the corner of Dundas Street W and Bloor Street W. Well situated building, steps from Dundas West Subway Station and UP Express.



Available Space

**Ground Floor\*: 700 SF** NEW: Perfect for Dentist or Medical

200: 734 SF Built

201: 1,080 SF Built Medical Office

206: 598 SF Built

~~208: 750 SF~~ Leased

301: 862 SF Built and Shows Well!

302: 1,610 SF Built Medical Office

~~303: 1,095 SF~~ Leased

406: 791 SF Base Building

~~501: 1,175 SF~~ Leased

502: 668 SF Base Building



Gross Rent

**\$28.00 PSF** Excludes Retail



Available

**Immediately**



Virtual Tour

**Suite 201**

[Click to View](#)

**Suite 206**

[Click to View](#)

**Suite 301**

[Click to View](#)

**Suite 302**

[Click to View](#)

## Features

- Building well suited for medical, professional or not for-profit use
- Across the street from Dundas West Subway Station and UP Express
- Great natural light and corner units available
- Underground monthly parking available
- On site property management
- Many suites are build and ready for occupancy



Leasing Agent

**Paul Cheevers\***

Senior Vice President

416.649.5949

pcheevers@lennard.com

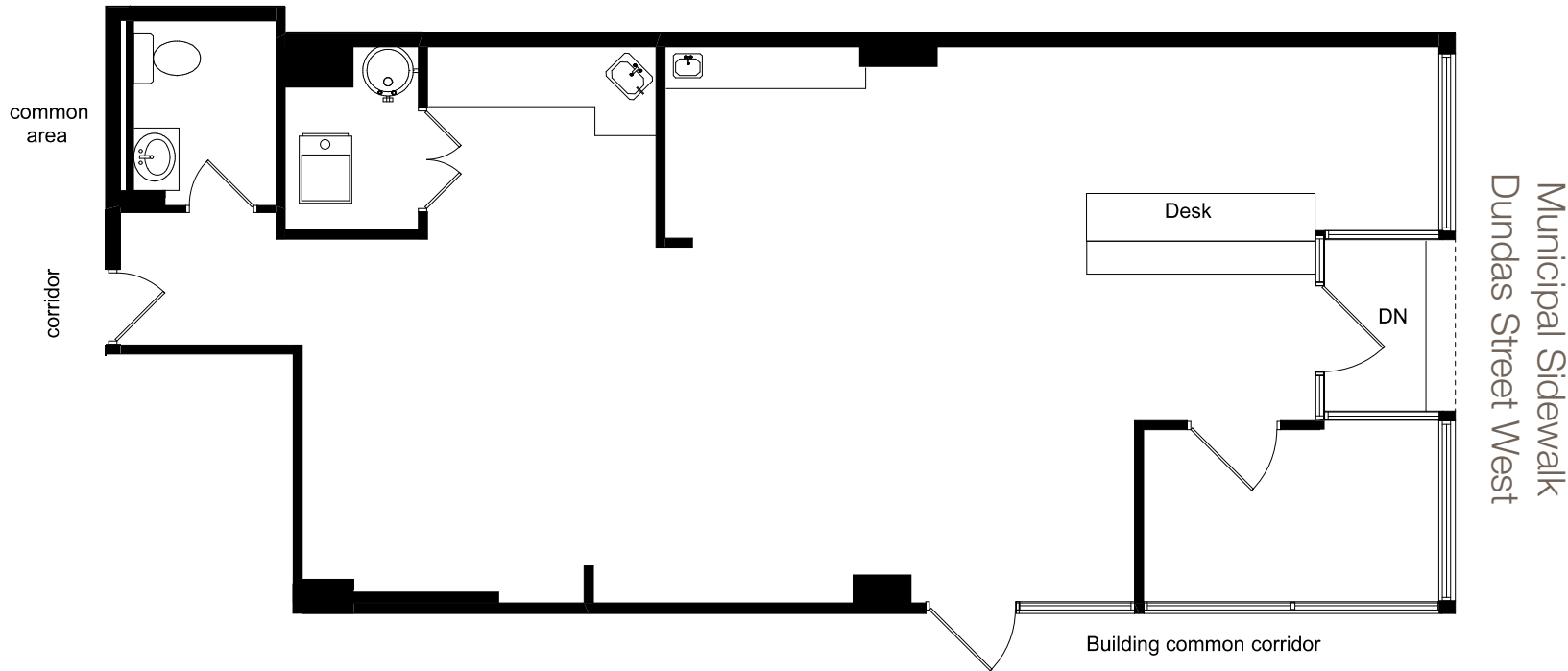
\*Broker

\*This space is located at 2335 Dundas Street W

# 2335 Dundas Street W

Floor Plan

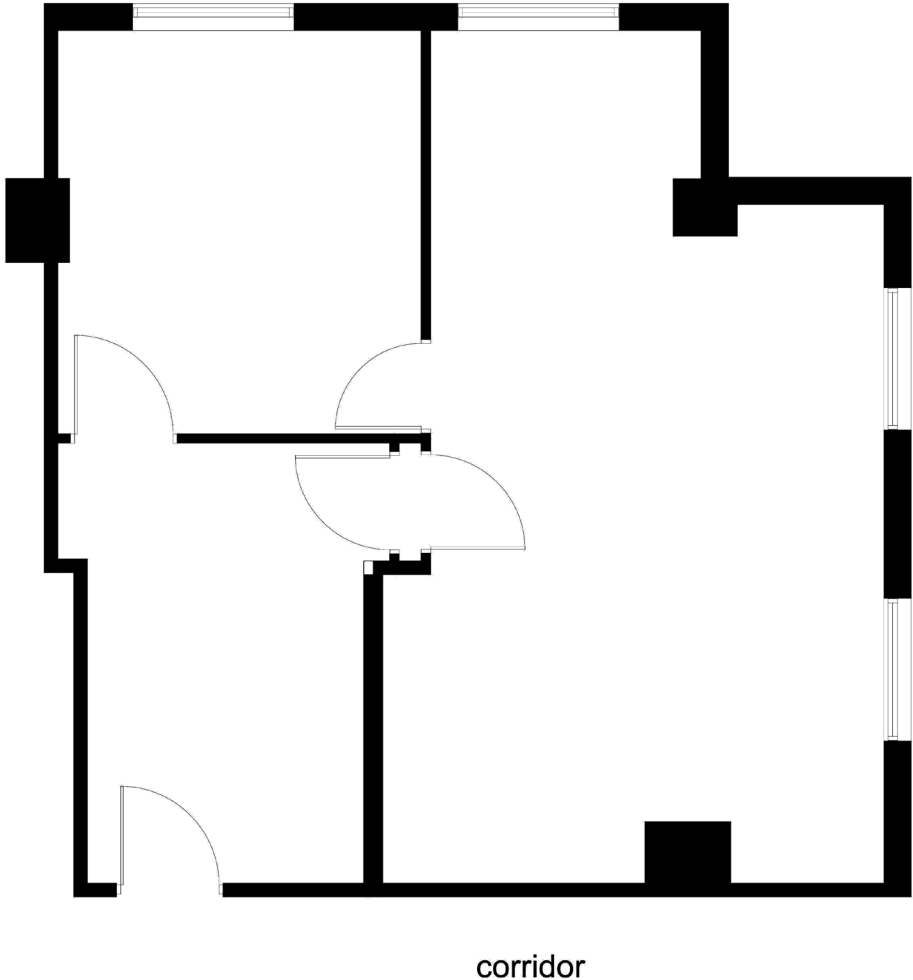
Ground Floor: 700 SF



# 2333 Dundas Street W

Floor Plan

Suite 200: 734 SF



# 2333 Dundas Street W

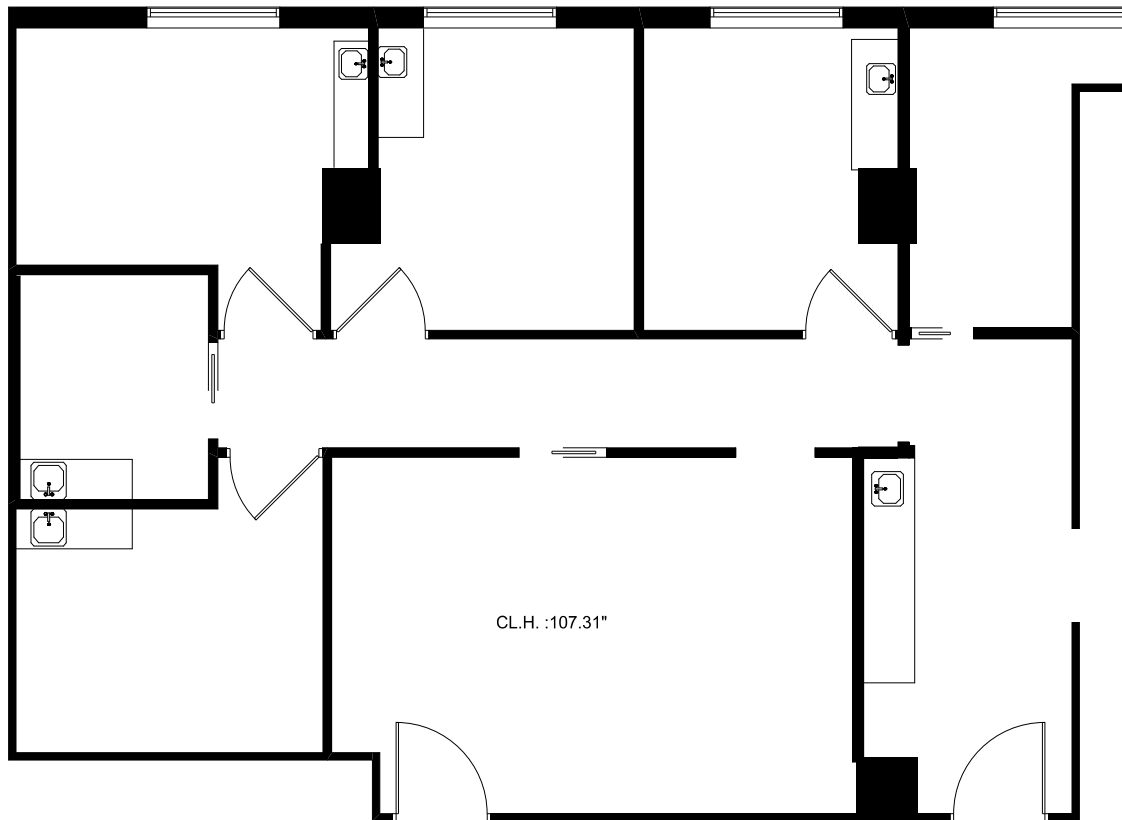
Floor Plan

Suite 201: 1,080 SF



Virtual Tour

[Click Here to View](#)



**Lennard:**

[lennard.com](http://lennard.com)

# 2333 Dundas Street W

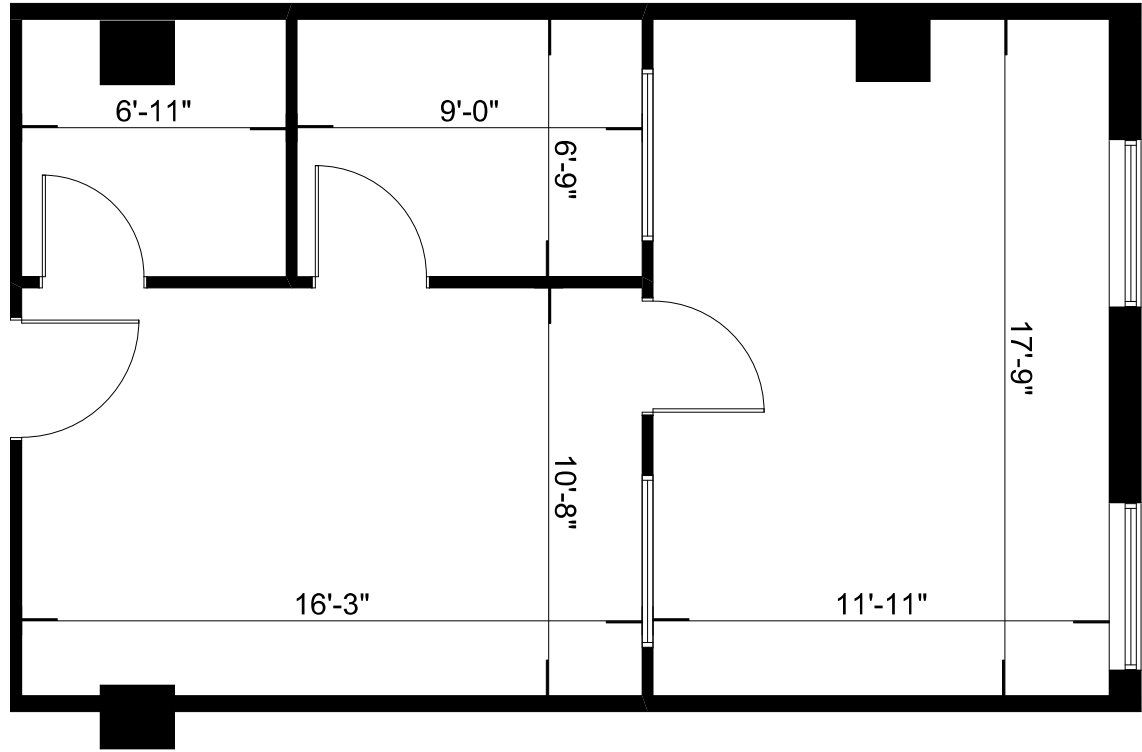
Floor Plan

Suite 206: 598 SF



Virtual Tour

[Click Here to View](#)



# 2333 Dundas Street W

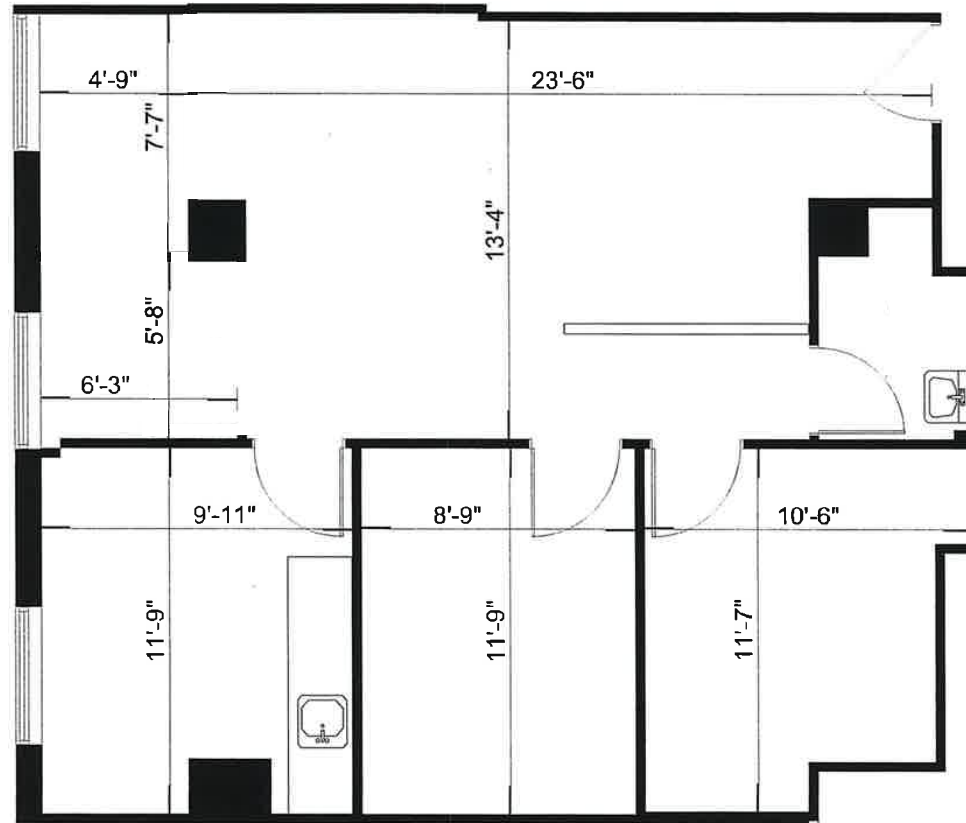
Floor Plan

Suite 301: 862 SF



Virtual Tour

[Click Here to View](#)



\*Note: Floor plan and measurements are approximate

# 2333 Dundas Street W

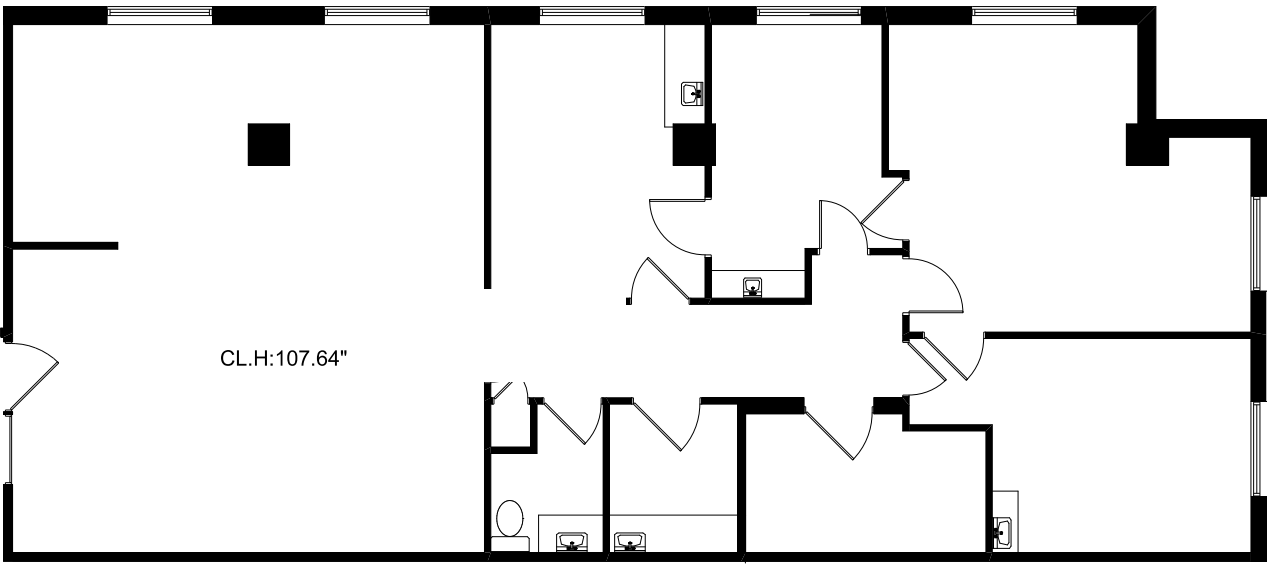
Floor Plan

Suite 302: 1,610 SF



Virtual Tour

[Click Here to View](#)



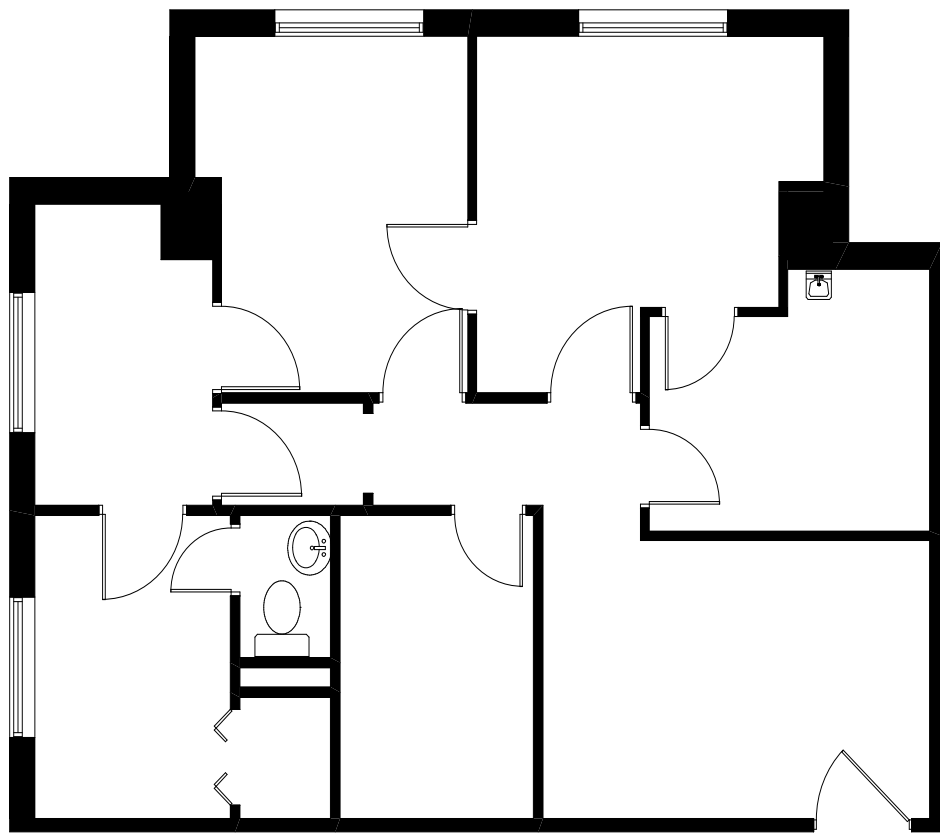
**Lennard:**

[lennard.com](http://lennard.com)

# 2333 Dundas Street W

Floor Plan

Suite 406: 791 SF

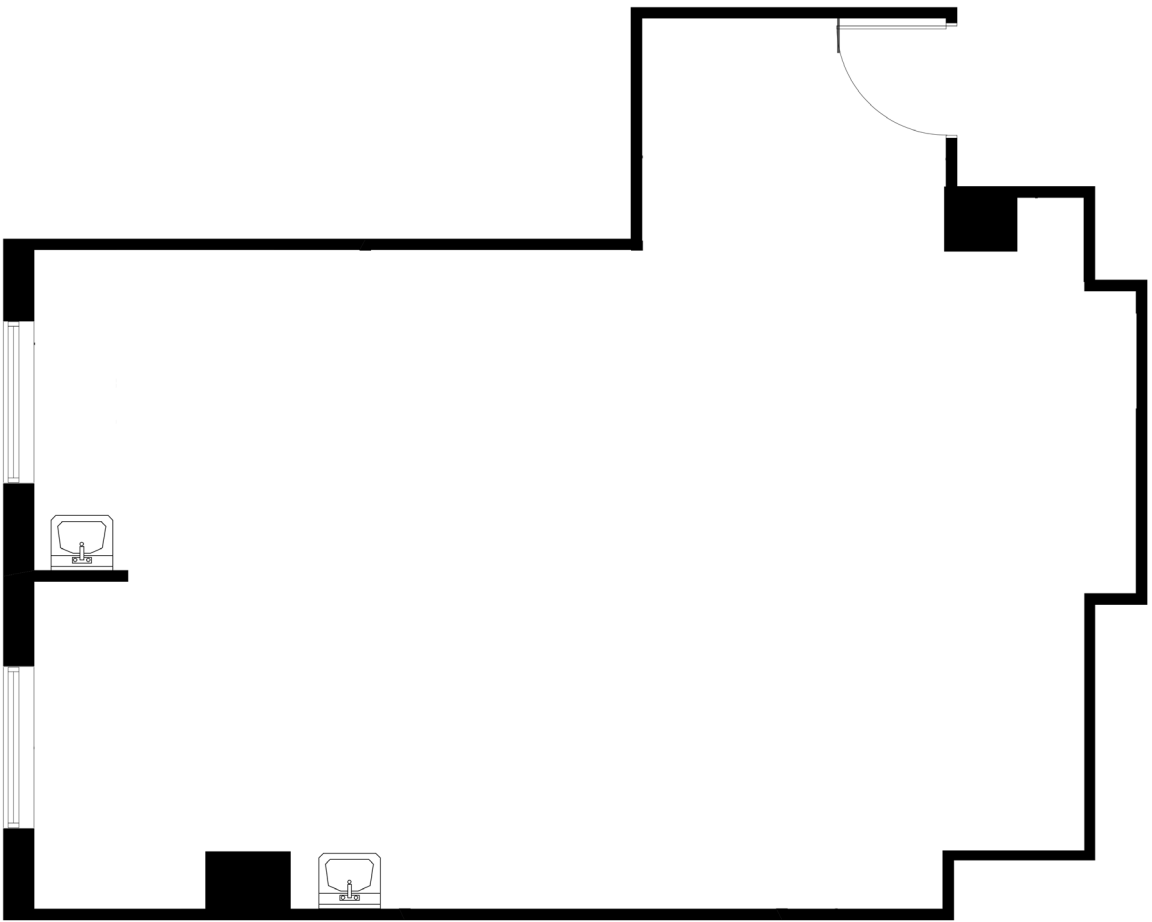


\*Note: Space is in base building condition

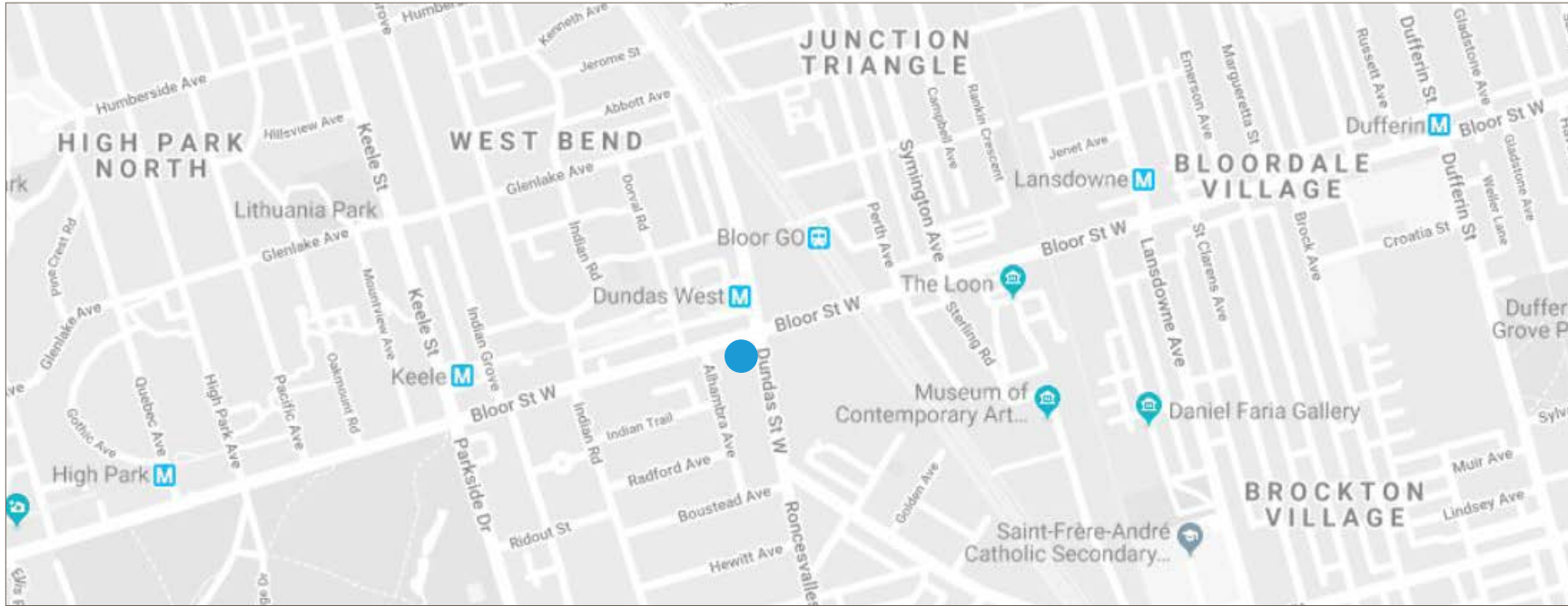
# 2333 Dundas Street W

Floor Plan

Suite 502: 668 SF (Base Building)



# 2333 Dundas Street W



## What's Near By

2333 Dundas Street W is located at the corner of Dundas Street West and Bloor Street W. It is steps away from public transit (Subway, 24hr Streetcar, Up Express, and Bloor GO Station), a variety of shops and restaurants. Less than a 15 minute drive from the Gardiner Express Way and is close proximity to the thriving High Park and Junction neighbourhoods.

## Lennard:

Statements and information contained herein are based on information furnished by principals and sources we deem reliable; however, we make no representation or warranty as to the accuracy, completeness or current status of such information and assume no responsibility for any errors, omissions, or misstatements. All information should be independently verified by the recipient. Lennard Commercial Realty, Brokerage.