

FOR LEASE



Studio / Office / Artistic Space Available

215 QUEEN ST W
CAMBRIDGE, ONTARIO

WHITNEY
Commercial Real Estate Services

The Textile Factory

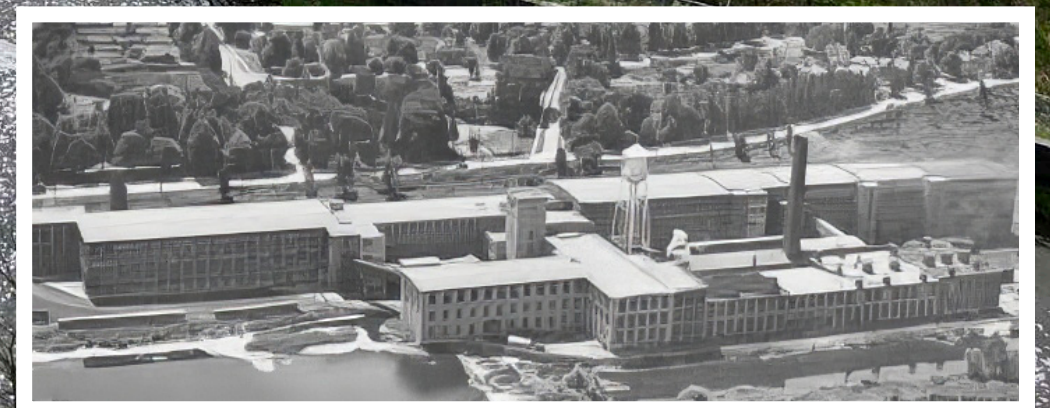
Cambridge, Ontario has a rich industrial history, and textiles played a significant role in the city's development. One notable textile factory in Cambridge was the Dominion Woollens and Worsteds Company.

The Dominion Woollens and Worsteds Company was established in 1882 and became one of the largest textile manufacturers in Canada. The factory specialized in producing a wide range of woolen and worsted fabrics, including blankets, flannels, and dress goods.

Throughout its history, the Dominion Woollens and Worsteds Company expanded its operations, acquired other textile mills, and introduced new technologies to improve production efficiency. The factory employed a large number of workers, contributing to the growth of the local economy and the development of the surrounding community.

Unfortunately, like many textile factories in North America, the Dominion Woollens and Worsteds Company faced challenges due to changing market conditions and increased global competition. The factory eventually closed its doors in the late 20th century, marking the end of an era for the textile industry in Cambridge.

While the Dominion Woollens and Worsteds Company is one example of a textile factory in Cambridge, there may have been other smaller mills or businesses that operated in the area as well.



SECOND LEVEL

ZONING | (H)(F)RM2CS5

UNIT B-200

AVAILABLE AREA | 1,560 SF

LEASE RATE | \$3,250.00 / Month Gross

UNIT B-201

AVAILABLE AREA | 645 SF

LEASE RATE | \$1,750.00 / Month Gross

UNIT B-202

AVAILABLE AREA | 1,310 SF

LEASE RATE | \$2,950.00 / Month Gross

UNIT B-203

AVAILABLE AREA | 975 SF

LEASE RATE | \$2,250.00 / Month Gross

UNIT B-204 | LEASED

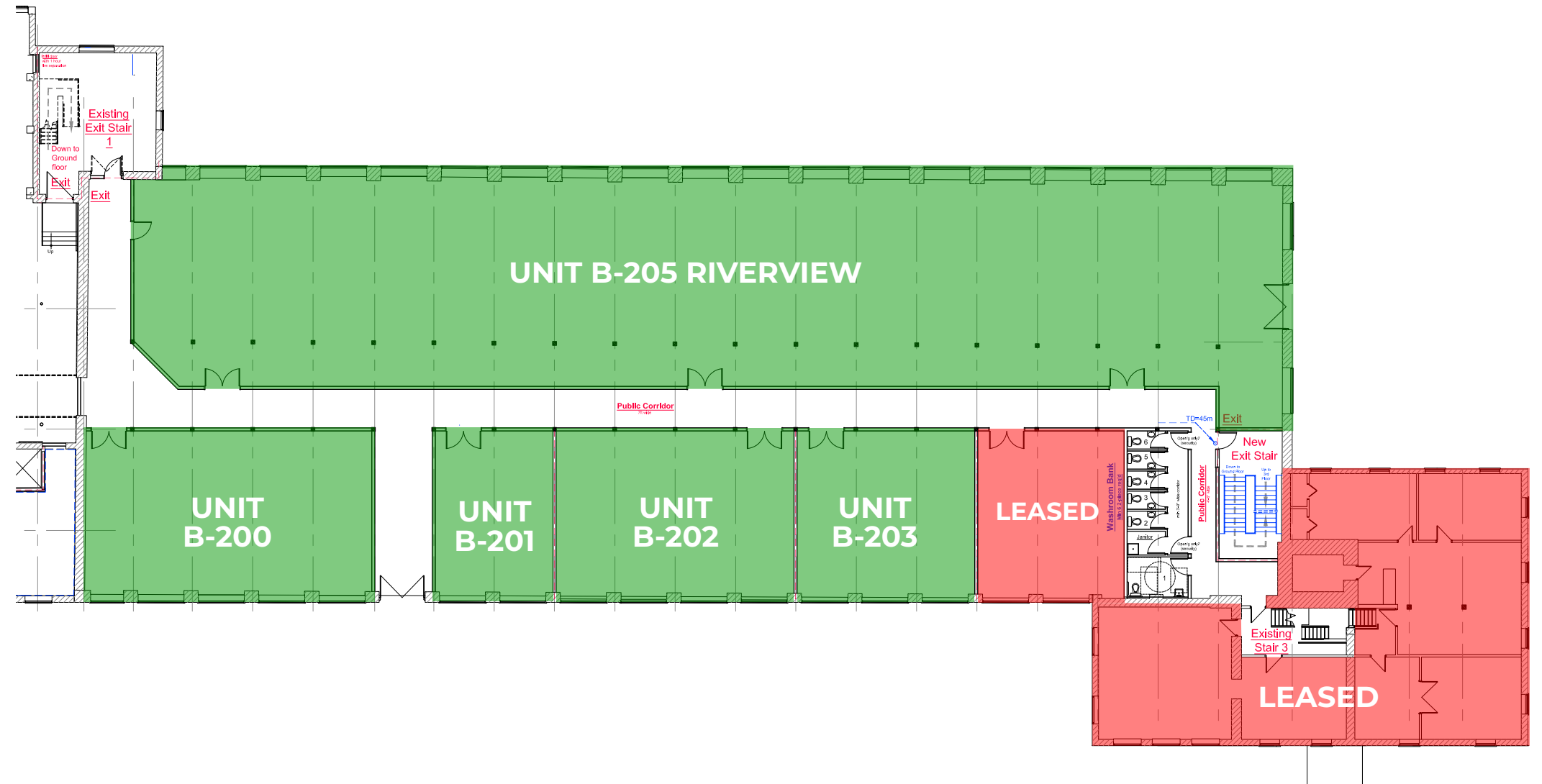
AVAILABLE AREA | 810 SF

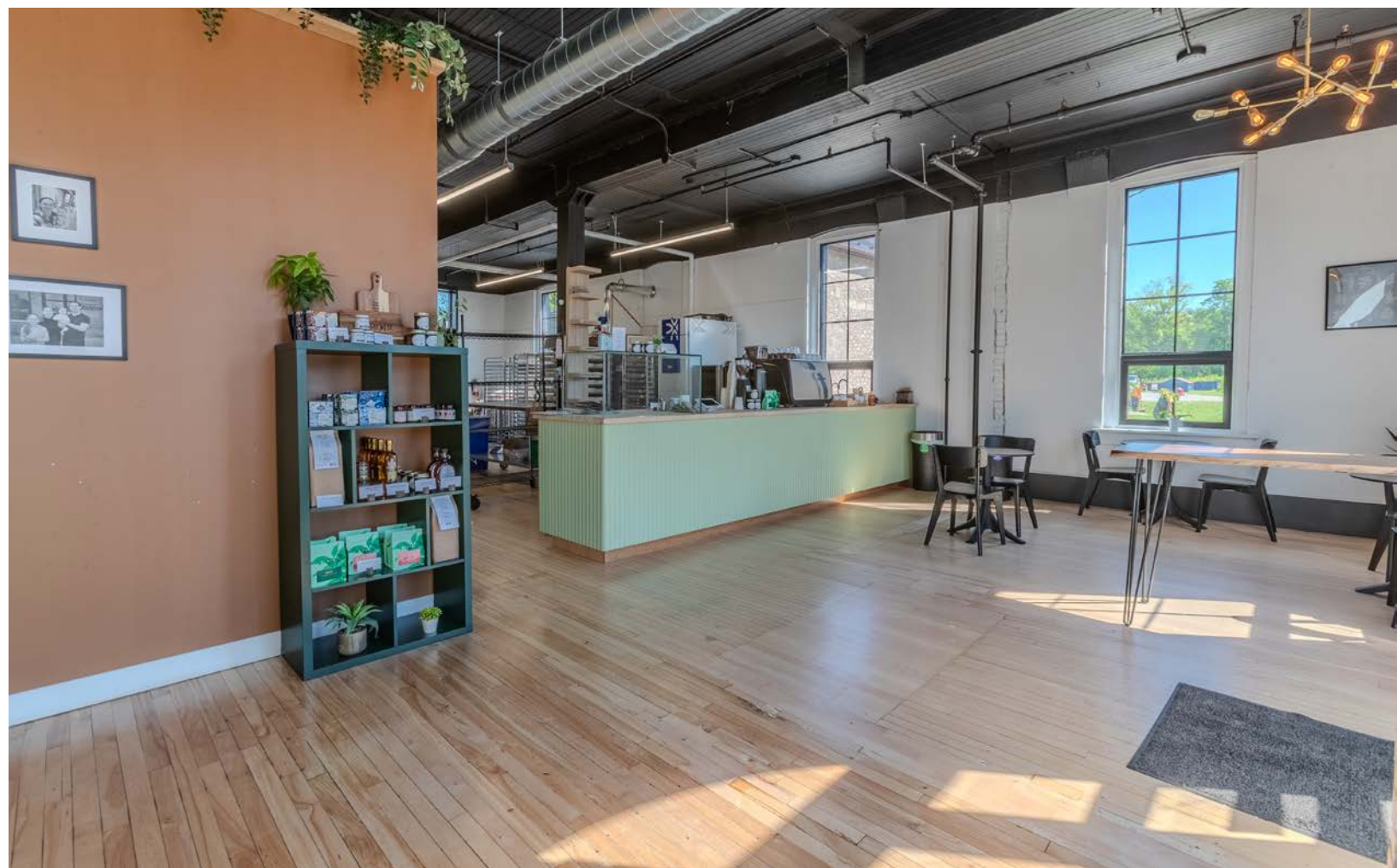
UNIT B-205

AVAILABLE AREA | 3,000, 5000, 7,800 SF

LEASE RATE | \$25.00 / SF Gross

SECOND LEVEL







JOIN THESE COMPANIES



Qigong • Tai Chi • Kung Fu





**PROXIMITY TO 215 QUEEN ST W,
CAMBRIDGE**

HWY 401 - 2 KM
Downtown Hespeler - 0.9 KM
Downtown Kitchener - 17.5 KM

Contact Listing Agents for more information



Xavier Ayora
Sales Representative
226.929.4667
xavier.ayora@whitneyre.com



Ginger Whitney**, SIOR, CCIM
Vice President
519.590.5242
ginger.whitney@whitneyre.com



Jack Hayward
Sales Representative
519.270.3314
jack.hayward@whitneyre.com

WHITNEY
Commercial Real Estate Services

WHITNEY & Company Realty Limited, Brokerage
103 Bauer Place, Suite 2
Waterloo, Ontario N2L 6B5
1.519.746.6300

www.whitneyre.com

The information provided herein, including but not limited to images, assumptions, estimates, and descriptions (the "Information"), is obtained from sources considered reliable. However, WHITNEY & Company Realty Limited ("Whitney") and its representatives, agents, or brokers do not warrant, guarantee, or make any representations as to the accuracy, correctness, or completeness of the Information. Whitney disclaims any liability or responsibility for the Information or for any reliance the recipient places upon it. Recipients are advised to perform their own due diligence to verify the Information before relying on it. The Information is subject to change, and any property referenced herein may be withdrawn from the market at any time without prior notice. Property outlines are approximate and may not represent actual boundaries. All Rights Reserved. © Whitney & Company Realty Limited, Brokerage - 2024

**Broker *Sales Representative