

REVISION ISSUES		
NO.	DATE	DESCRIPTION
..		PROJECT STATUS

Confidential - These drawings are the sole property of the Mirador Group. No part of these drawings shall be used, copied, or distributed by any person including the client without the prior written permission of the Mirador Group.

FOR REVIEW

PEARLAND OFFICE PARK

SMITH RANCH ROAD



6575 West Loop South
Suite 650
Bellaire, Texas 77401
p.713.626.4770
f.713.661.6606

PROJECT 17-118

PEARLAND OFFICE PARK

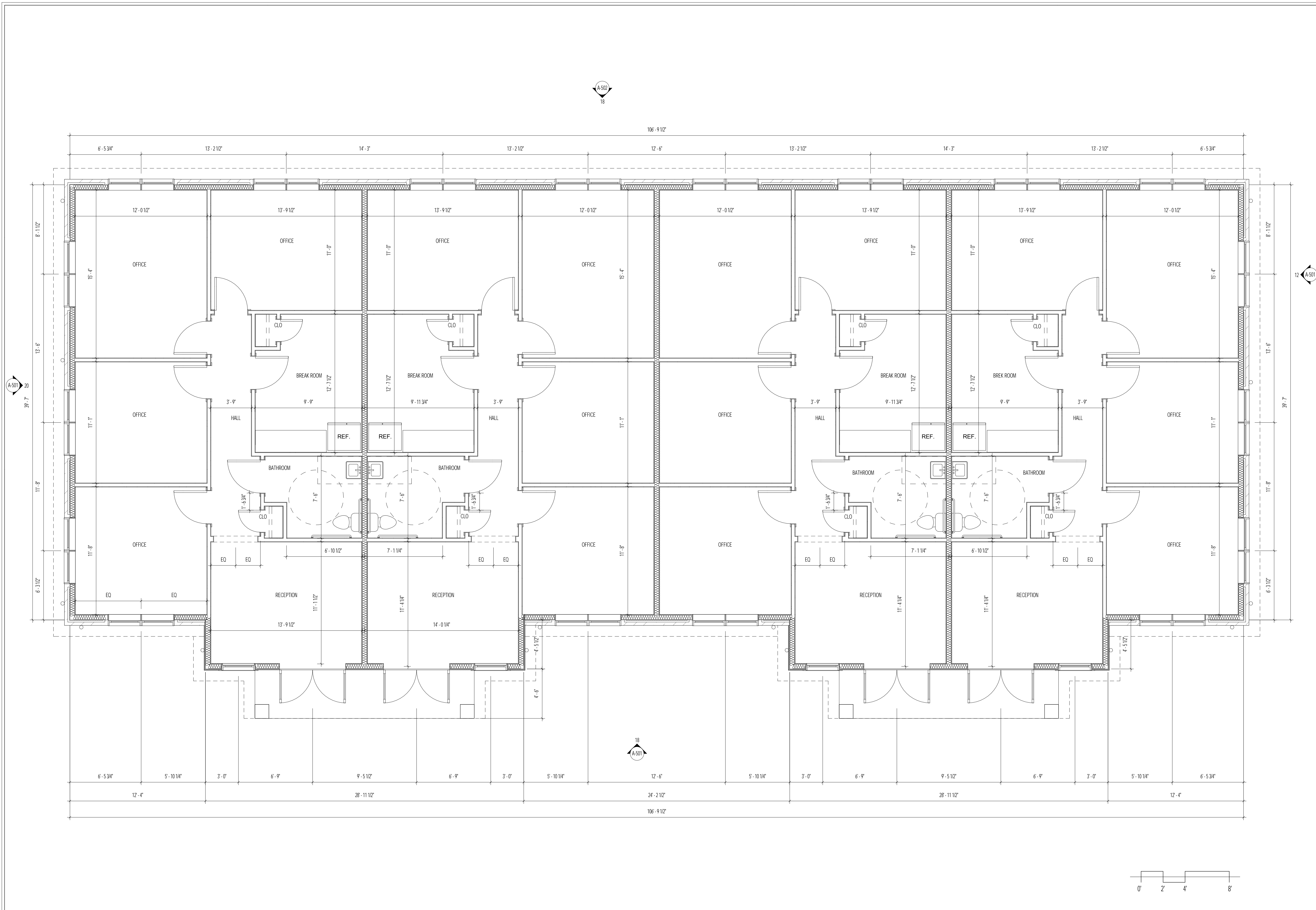
PROJECT ISSUE ..

DRAWN SLD CHECKED TLB

FILE
C:\Users\slsd\Documents\17-118 - Pearland Office Park_sld.rvt

FIRST FLOOR PLAN

A-101



6/8/2017 4:13:31 PM

REVISION ISSUES		
NO.	DATE	DESCRIPTION
		PROJECT STATUS

Confidential - These drawings are the sole property of the Mirador Group. No part of these drawings shall be used, copied, or distributed by any person including the client without the prior written permission of the Mirador Group.

FOR REVIEW

PEARLAND OFFICE PARK
SMITH RANCH ROAD

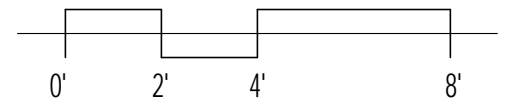
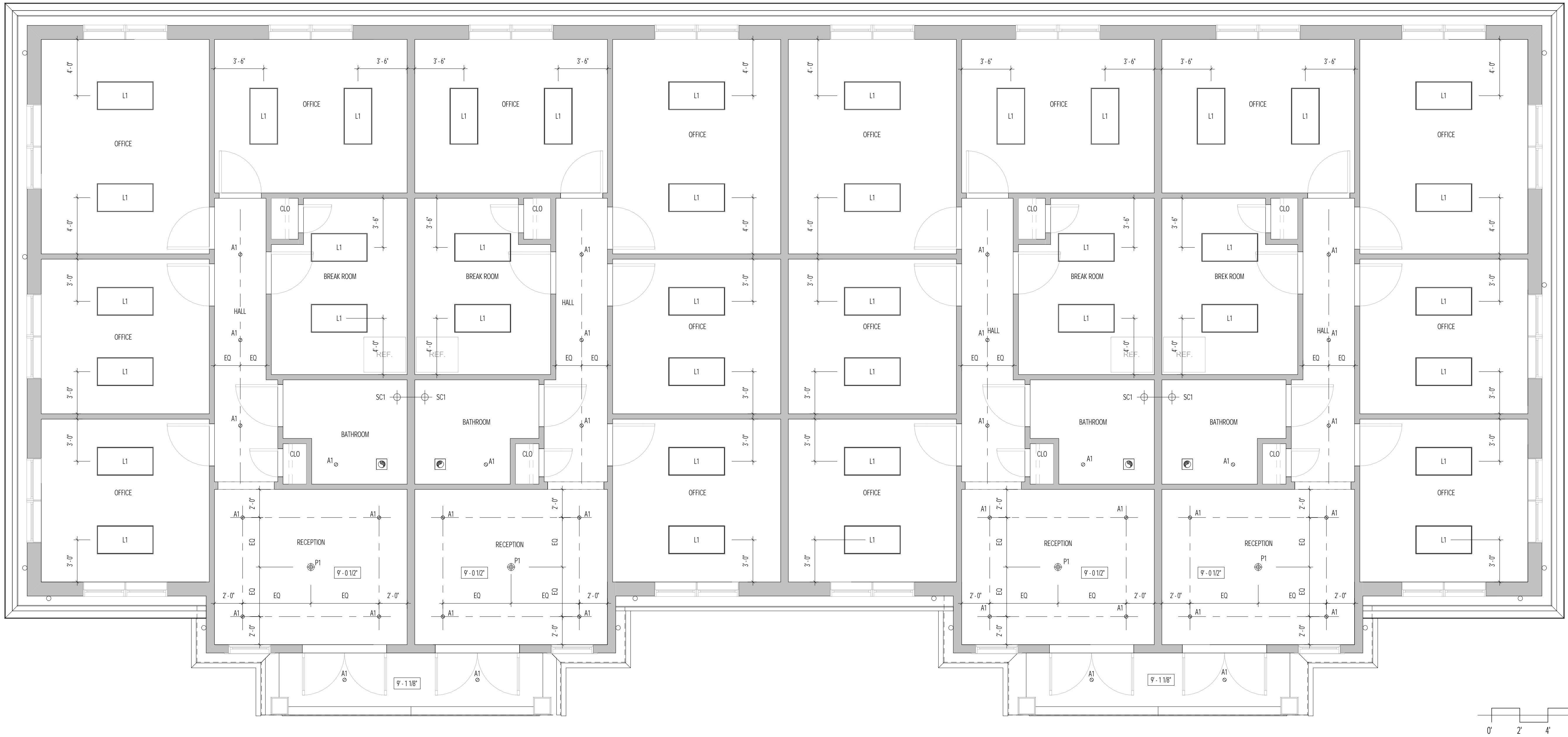


6575 West Loop South
Suite 650
Bellaire, Texas 77401
p.713.626.4770
f.713.661.6606

PROJECT 17-118
PEARLAND OFFICE PARK
PROJECT ISSUE
DRAWN -- CHECKED TLB

FILE
C:\Users\sdaz\Documents\17-118 - Pearland Office Park_sda2.rvt
FIRST FLOOR REFLECTED
CEILING PLAN

A-201



18 FIRST FLOOR REFLECTED CEILING PLAN

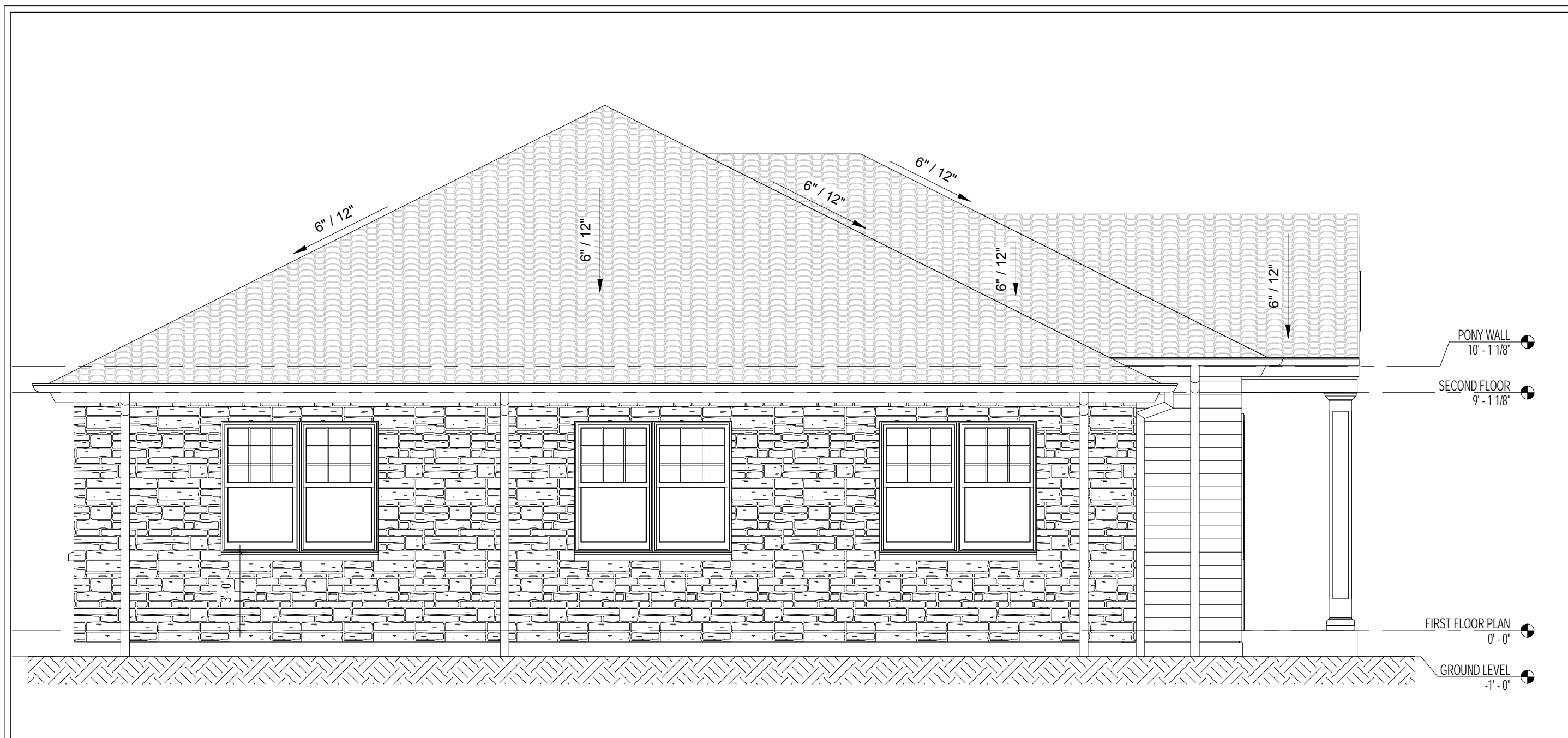
SCALE: 1/4" = 1'-0"

13 LEGEND - CEILING PLAN LIGHTING	
	SUSPENDED GYP. BOARD CEILING
	4" LOW VOLTAGE DOWNLIGHT - PIN HOLE TRIM (LIGHTOLIER 2000X/2013)
	WALL WASHER
	MONOPOINT
	2X4" SUSPENDED, L.E.D. FIXTURE WITH UPLIGHT AND DOWNLIGHT
	PENDANT LIGHT
	L.E.D. EXTERIOR WALL PACK
	L.E.D. EXTERIOR WALL SCONCE
	2 X 2 X 2 RECESSED LIGHT
	2 X 4 RECESSED LIGHT
	NEW EMERGENCY EXIT SIGNAGE
	EXISTING EMERGENCY EXIT SIGNAGE TO REMAIN
	EXHAUST FAN
	EXTERIOR LIGHTING WITH INTEGRATED MOTION SENSOR
	XENON STRIP LIGHTING (XENFLEX OR EQUAL)
	UNDERCOUNTER LIGHT
	OVERCOUNTER LIGHT
	LED STRIP LIGHT
	NEW 8' STRIP FLUORESCENT LIGHT FIXTURE
	TRACK LIGHTING
	CABLE LIGHTING

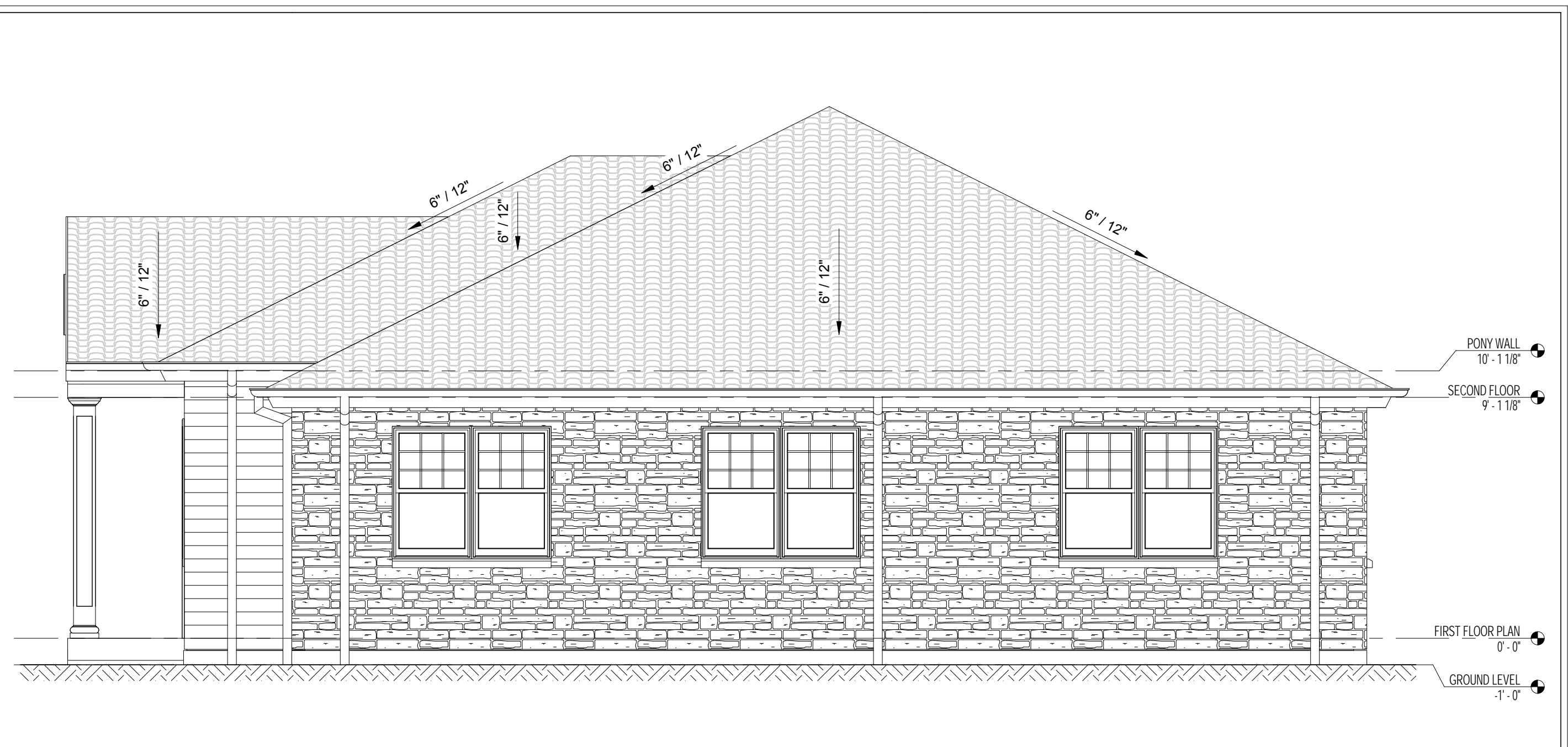
KEYNOTE	NOTES
05	KEYNOTES

- A. PENETRATIONS INTO FIRE RESISTANT RATED PARTITIONS SHALL NOT REDUCE THE FIRE RESISTANCE RATING OF WALL. REFER TO IBC SECTION 712 PENETRATIONS
- B. CEILINGS TO BE COVERED IN 5/8" GYPSUM BOARD WHEN FRAMING IS GREATER THAN 16" O.C. U.N.O.
- C. UNDER STAIR PROTECTION TO ENCLOSE ACCESSIBLE SPACE WITH 5/8" TYPE 'X' GYPSUM BOARD
- D. SMOKE DETECTORS TO BE HARD WIRED AND INTERCONNECTED WITH BATTERY BACK UP
- E. CARBON MONOXIDE & SMOKE DETECTOR INSTALLED IN HALLWAY AND WITHIN 4'-0" INSIDE AND 12'-0" OUTSIDE OF BEDROOM
- F. USE AIRTIGHT J-BOXES WHEN LOCATED IN THERMAL ENVELOPE
- G. EXTERIOR ELECTRICAL PENETRATIONS TO BE FLASHED PER THE TVEX DETAIL SHEET
- H. PROVIDE A 110 VOLT OUTLET AND SWITCHED LIGHT IN THE ATTIC NEAR THE MECHANICAL EQUIPMENT. LOCATE THE SWITCH NEAR THE ATTIC ACCESS OR OUTSIDE THE ATTIC
- I. ATTIC ACCESS LADDER TO BE A MINIMUM OF 34" WIDE AND 54" LONG TO ACCOMMODATE ALL EQUIPMENT AND A LOAD CAPACITY OF 350 LBS. PROVIDE 3/4" PLYWOOD DECKING 34" WIDE FROM THE ATTIC ACCESS LADDER TO THE EQUIPMENT. PROVIDE A 30" WIDE SERVICE PLATFORM AT THE SERVICE SIDE OF ALL EQUIPMENT IN THE ATTIC
- J. ATTIC HATCH ACCESS AND PULL DOWN STAIRS MUST BE SEALED AND INSULATED TO MATCH ADJACENT R-VALUE UNLESS ATTIC IS A CONDITIONED SPACE
- K. ATTIC DOOR ACCESS MUST MEET THE SAME FENESTRATION U-FACTOR AS THE FRONT DOOR
- LIGHTING:
- A. INSTALL LIGHT FIXTURES PER THE DIMENSIONS FURNISHED. VERIFY LOCATION OF LIGHT FIXTURES WITH TRUSS LOCATIONS ARCHITECT SHOULD BE CONTACTED IF ADDITIONAL DIMENSIONS ARE NEEDED OR A CONFLICT ARISES TO ALIGN FIXTURES
- B. 75% OF LAMPS TO BE HIGH-EFFICACY
- C. SEALED RECESSED CAN LIGHT FIXTURES ARE REQUIRED WHEN INSTALLED IN THE THERMAL ENVELOPE. PROVIDE FIRE RESISTANT ROCK WOOL COVERS BY TENMAT OR EQUAL AND FULLY COVER IN INSULATION TO ACHIEVE SPECIFIED R-VALUE
- D. COORDINATE HEIGHT OF WALL SCONCES WITH INTERIOR ELEVATIONS. IF NO DIMENSION IS SHOWN CONTACT ARCHITECT
- E. MOUNT EXTERIOR WALL SCONCES 84" FROM FINISH GRADE TO THE BOTTOM OF LIGHT FIXTURES, U.N.O.
- F. LIGHT SWITCHES TO BE INSTALLED AT 42" A.F.F. UNLESS NOTED OTHERWISE
- G. ALL FIXTURES LOCATED IN CLOSES ARE TO BE EQUIPPED WITH A DOOR SWITCH
- H. ALL SWITCH PLATES AND OUTLET COVERS TO HAVE CONCEALED FASTENERS
- I. GAS LAMPS MAY NOT HAVE A CONTINUOUSLY BURNING PILOT

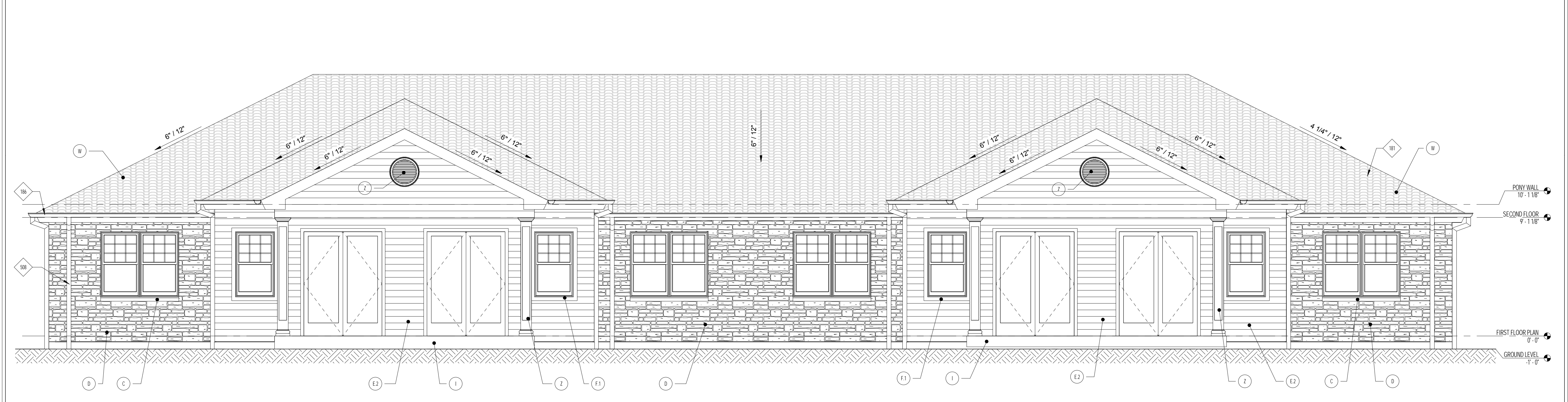
6/8/2017 4:13:32 PM



20 LEFT ELEVATION SCALE: 1/4" = 1'-0"



12 RIGHT ELEVATION SCALE: 1/4" = 1'-0"



18 FRONT ELEVATION SCALE: 1/4" = 1'-0"

KEYNOTE	NOTES
181	ROOFING CLAY TILE WITH ONE LAYER OF 30LB ASPHALT SATURATED FELT AND ONE LAYER OF W.R. GRACES ICE AND WATER SHIELD
186	GUTTER 6" HALF ROUND, COORDINATE WITH ELEVATIONS AND DETAILS
508	DOWNSPOUT, TO DISCHARGE AT GRADE WITH SPLASH BLOCKS AND INTO LANDSCAPE SWALE TO STREET

17 KEYNOTES

KEYNOTE	MATERIAL	MANUFACTURER	STYLE/MODEL NO.	COLOR	NOTES
D	STONE				
E.2	ARTISAN HARDIE				
F.1	TRIM				
I	CONCRETE				
W	CLAY ROOF TILE				
Z	LOUVER				

09 EXTERIOR MATERIALS

- A. ALL STUCCO, WOOD, AND HARDIE SURFACES TO BE PRIMED AND PAINTED PER MANUFACTURERS REQUIREMENTS
- B. ALL STEEL LINTELS TO BE FULLY PRIMED AND PAINTED WITH ACRYLIC FINISH PRIOR TO INSTALLATION, A SECOND FINISH COAT TO BE APPLIED AFTER INSTALLATION.
- C. PROVIDE SAMPLES OF ALL COLORS ON ACTUAL MATERIALS TO BE INSTALLED AND FINISHED, I.E. ON THE STUCCO WALL, WOOD FENCE, ETC. OWNER/ARCHITECT TO REVIEW AND APPROVE.
- D. PROVIDE STUCCO CONTROL JOINTS IN THE STUCCO AS PER THE RECOMMENDATION OF THE NATIONAL STUCCO MANUFACTURERS ASSOCIATION (HTTP://WWW.STUCCOMFGASSOC.COM). COORDINATE WITH THE ELEVATIONS AS SHOWN.
- E. PROVIDE EXPANSION JOINTS IN BRICK AND STONE AS PER THE BRICK INDUSTRY ASSOCIATION. SPACING SHALL BE NO MORE THAN 25 FEET APART AND SHALL BE INSTALLED AT WALL INTERSECTIONS, INSIDE CORNERS, OFFSETS, SETBACKS AND CHANGES IN WALL HEIGHT OR WHEN WALL BACKING SYSTEM CHANGES OR SUPPORT CHANGES, WHERE WALL FUNCTION CHANGES OR CLIMATE EXPOSURE CHANGES. EXTEND TO TOP OF BRICKWORK OR PARAPETS.
- F. PROVIDE SEALANT AT ALL INTERSECTIONS OF DIFFERENT MATERIALS.
- G. CHIMNEYS TO BE A MINIMUM 2'-0" ABOVE ANY ROOF WITHIN A 10'-0" RADIUS OR 3'-0" ABOVE ANY ROOF LINE RIDGE. CHIMNEY PIPES SHALL EXIT THROUGH THE ROOF DECKING INSIDE ALL BUILDING AND SETBACK LINES. PROVIDE A SPARK ARRESTOR AT THE CHIMNEY. THE MESH IS TO HAVE A MAXIMUM GAP OF 1/2", MINIMUM GAP OF 3/8".
- H. ALL WINDOW HEAD HEIGHTS TAKEN FROM IMMEDIATE INTERIOR FLOOR LEVEL. HEAD HEIGHTS IN STAIRWELLS TAKEN FROM FLOOR LEVEL OF THE STAIRWELL.

01 GENERAL NOTES - EXTERIOR ELEVATIONS

REVISION ISSUES		
NO.	DATE	DESCRIPTION
		PROJECT STATUS

Confidential - These drawings are the sole property of the Mirador Group. No part of these drawings shall be used, copied, or distributed by any person including the client without the prior written permission of the Mirador Group.

FOR REVIEW

PEARLAND OFFICE PARK
SMITH RANCH ROAD



6575 West Loop South
Suite 650
Bellaire, Texas 77401
p.713.626.4770
f.713.661.6606

PROJECT	17-118
PEARLAND OFFICE PARK	
PROJECT ISSUE	
DRAWN	CHECKED TLB
FILE	C:\Users\stodaz\Documents\17-118 - Pearland Office Park_sdad.rvt

BUILDING ELEVATIONS
FRONT & RIGHT

A-501