



# SOUTH PARK GROUP

[www.southparkgroup.com](http://www.southparkgroup.com)



## FOR LEASE

### CREATIVE OFFICE

5015 Eagle Rock Boulevard  
Los Angeles, California 90041

Newly remodeled Class A office building with up to 16 foot floor to ceiling glass. Exposed steel beams, concrete floors. Ample parking on site. All spaces are build to suit.

#### AVAILABLE SPACE

**Suite 202:** Approximately 813 rentable sqft

**Suite 205:** Approximately 1,140 rentable sqft

**Rate: \$2.85 per sqft, Modified Gross**

**Parking: \$150 per space**

#### DAVID RAVANSHENAS

Tel. 323.782.1205

E. [david@southparkgroup.com](mailto:david@southparkgroup.com)

No. 01869082

#### ETHAN WEBSTER

Tel. 323.782.1260

E. [ethan@southparkgroup.com](mailto:ethan@southparkgroup.com)

No. 02225923

SOUTH PARK GROUP | 8322 Beverly Blvd., Suite 301 | Los Angeles, CA 90048

This information has been furnished by sources that we deem reliable, but for which we assume no liability. The information contained herein is given, in confidence, with the understanding that all negotiations pertaining to this property be handled through the submitting office. All measurements are approximate.

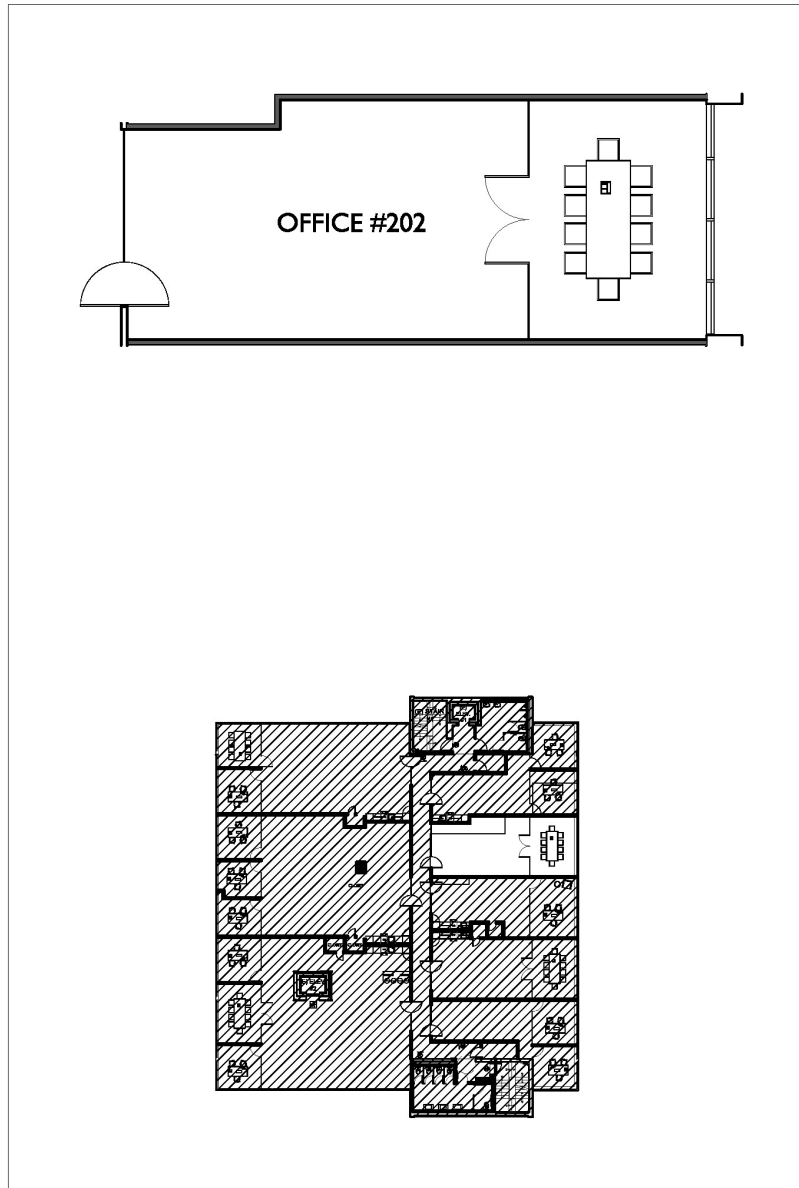


# SOUTH PARK GROUP

[www.southparkgroup.com](http://www.southparkgroup.com)

## FLOOR PLAN

5015 Eagle Rock Blvd., Suite 202, Los Angeles, California 90041



**SUITE 202: 813 RSF**

**SOUTH PARK GROUP | 8322 Beverly Blvd., Suite 301 | Los Angeles, CA 90048**

This information has been furnished by sources that we deem reliable, but for which we assume no liability. The information contained herein is given, in confidence, with the understanding that all negotiations pertaining to this property be handled through the submitting office. All measurements are approximate.

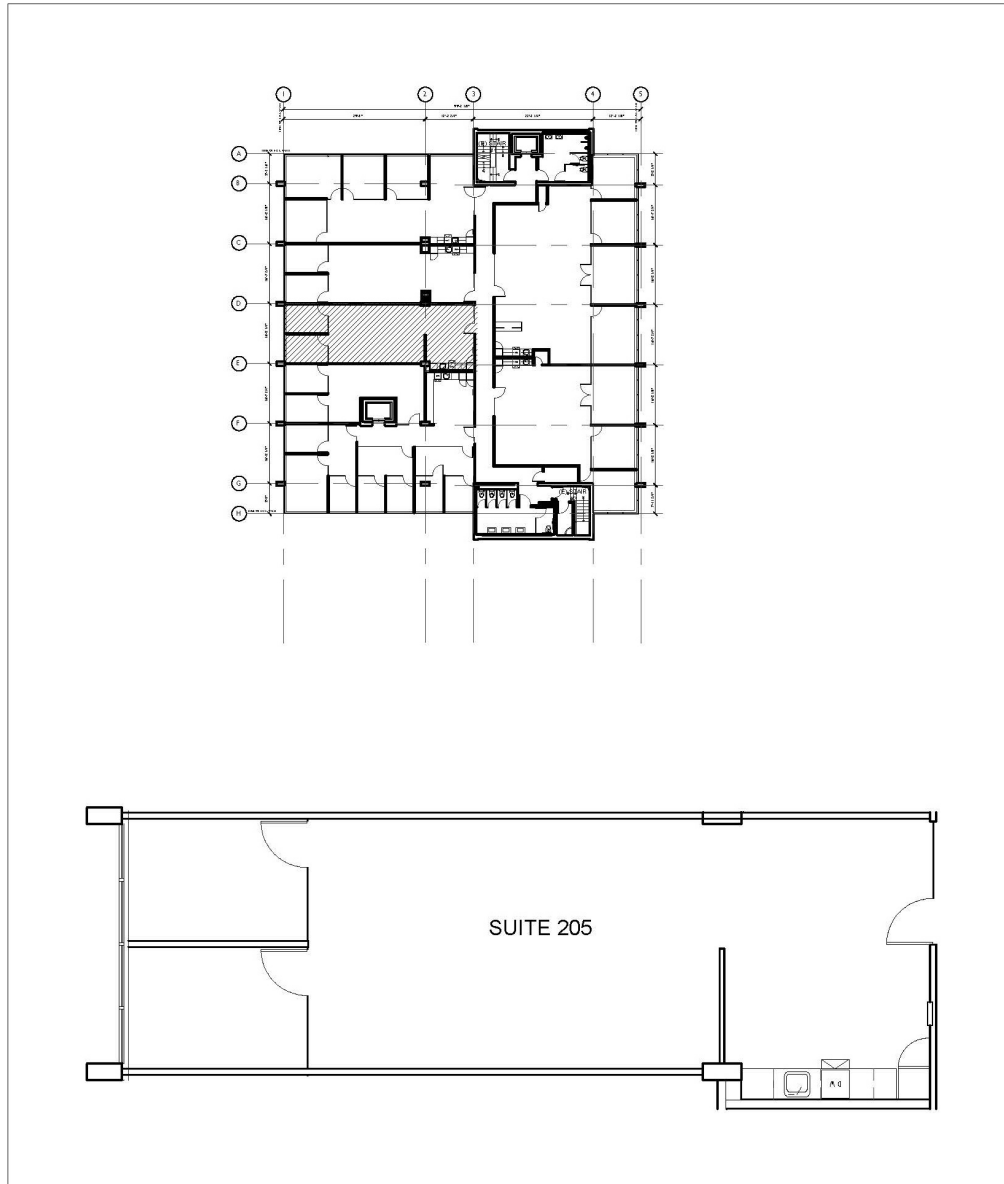


# SOUTH PARK GROUP

[www.southparkgroup.com](http://www.southparkgroup.com)

## FLOOR PLAN

5015 Eagle Rock Blvd., Suite 205, Los Angeles, California 90041



**SUITE 205: 1,140 RSF**

**SOUTH PARK GROUP | 8322 Beverly Blvd., Suite 301 | Los Angeles, CA 90048**

This information has been furnished by sources that we deem reliable, but for which we assume no liability. The information contained herein is given, in confidence, with the understanding that all negotiations pertaining to this property be handled through the submitting office. All measurements are approximate.



# SOUTH PARK GROUP

[www.southparkgroup.com](http://www.southparkgroup.com)

## INTERIOR

5015 Eagle Rock Blvd., Los Angeles, California 90041



**SOUTH PARK GROUP | 8322 Beverly Blvd., Suite 30% | Los Angeles, CA 90048**

This information has been furnished by sources that we deem reliable, but for which we assume no liability. The information contained herein is given, in confidence, with the understanding that all negotiations pertaining to this property be handled through the submitting office. All measurements are approximate.