

2324 KIMARRA PLACE

Lincoln, NE 68508



PROPERTY DESCRIPTION

Located off 27th street, just south of Cornhusker Hwy, this industrial building contains individual garage bays, high ceilings, and suited for a range of uses. Take advantage of ample indoor space to streamline operations and propel your business forward in this dynamic and adaptable facility. Inquire now to secure your future workspace!

OFFERING SUMMARY

Lease Rate	\$6.50 - 6.95 SF/yr (NNN)
Number of Units	12
Total Available SF	13,497 SF
Building Size	40,779 SF
NNN	\$2.25 / SF

SPACES	LEASE RATE	SPACE SIZE
2324 Kimarra Place Suite 3	\$6.50 - 6.95 SF/yr	6,797 - 11,441 SF
2300 Kimarra Place Suite 5	\$6.50 - 6.95 SF/yr	2,171 - 6,700 SF
2300 Kimarra Place Suite 6	\$6.50 - 6.95 SF/yr	2,000 - 6,700 SF
2300 Kimarra Place Suite 7	\$6.50 - 6.95 SF/yr	2,529 - 6,700 SF

DEMOGRAPHICS	0.3 MILES	0.5 MILES	1 MILE
Total Households	108	671	3,508
Total Population	291	1,835	9,020
Average HH Income	\$52,604	\$58,604	\$60,429



TOM GIFFORD
 Broker
 402.326.2413
 TJGifford@SpeedwayProperties.com



KERI BOWER
 Commercial Leasing Agent
 402.323.3127
 kabower@speedwayproperties.com

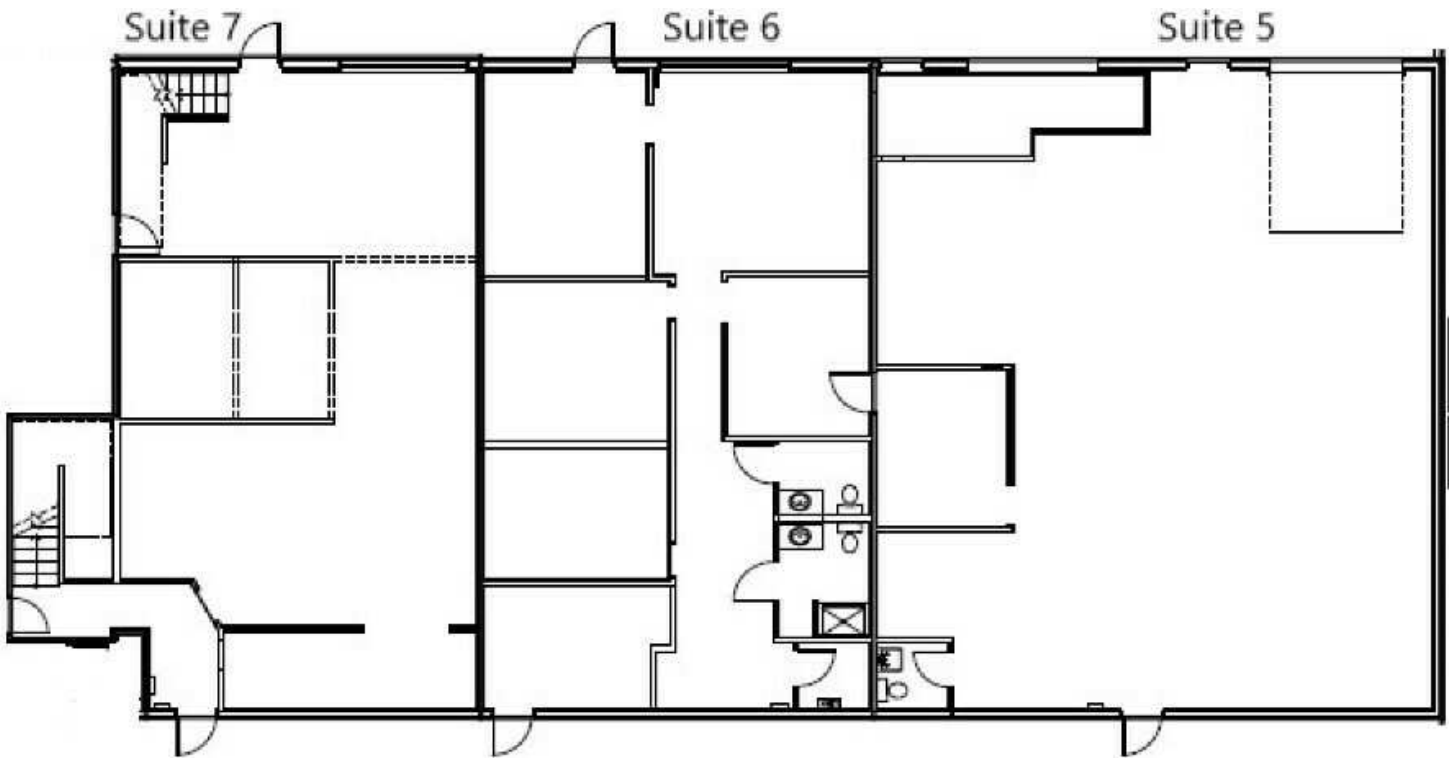
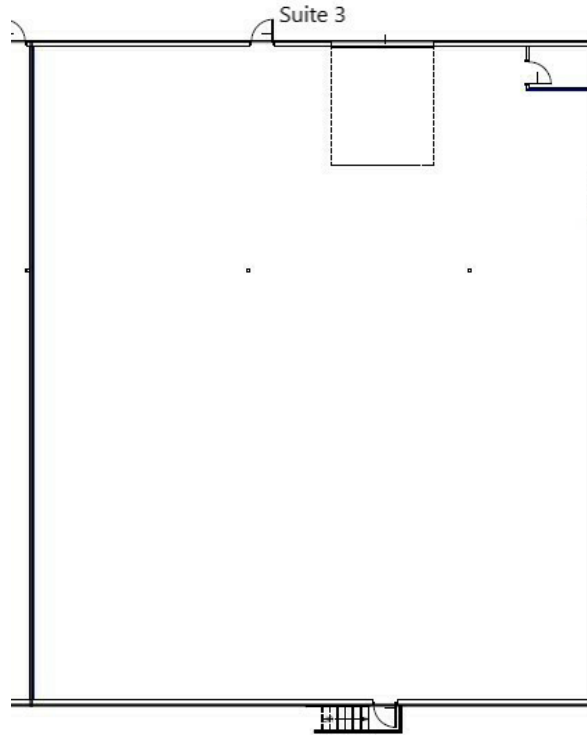


LAUREN COOK
 Commercial Leasing Agent
 402.323.3126
 lmcook@speedwayproperties.com



2324 KIMARRA PLACE

2324 Kimarra Place, Lincoln, NE 68508



TOM GIFFORD
Broker
402.326.2413
TJGifford@SpeedwayProperties.com



KERI BOWER
Commercial Leasing Agent
402.323.3127
kabower@speedwayproperties.com



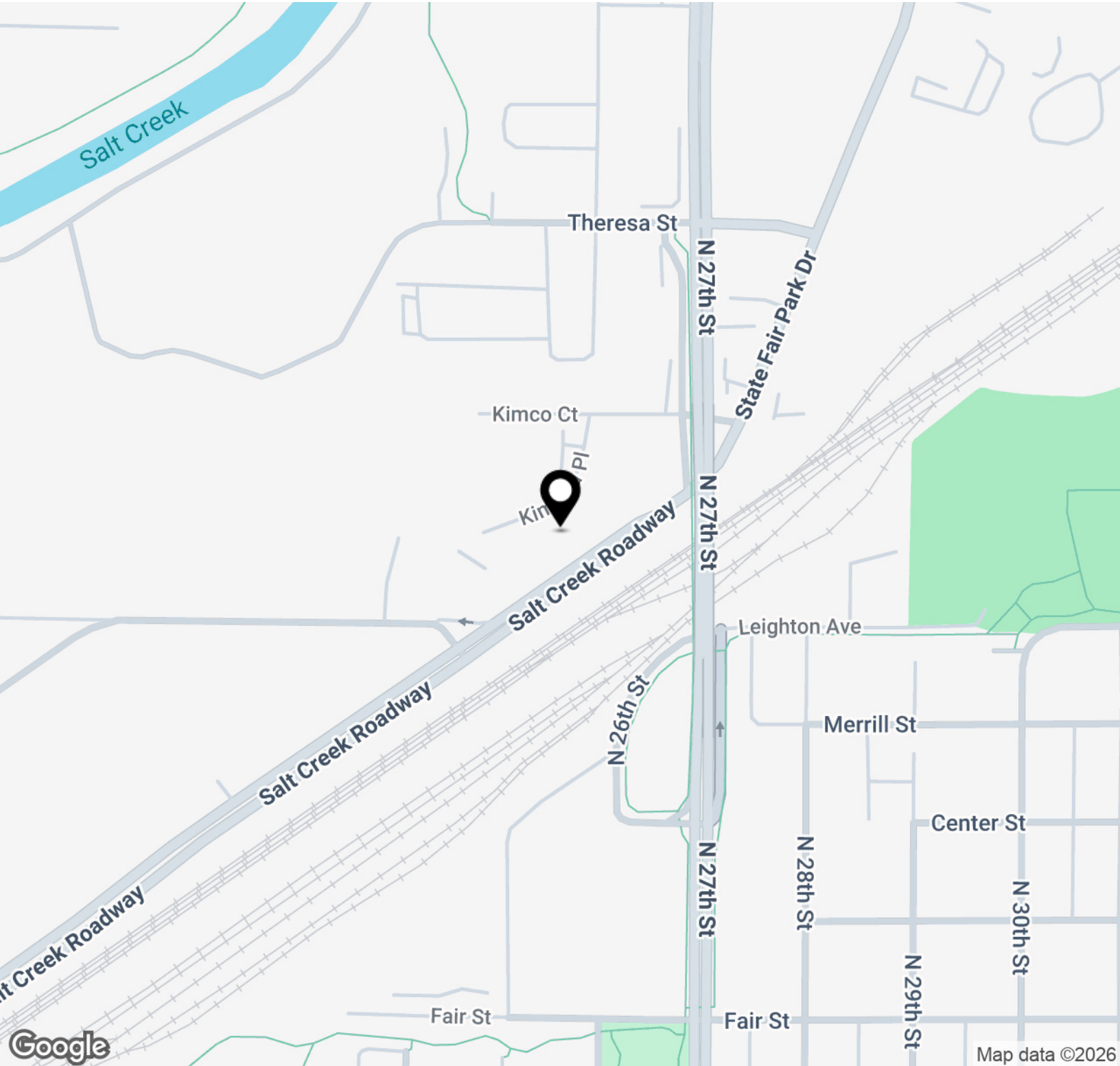
LAUREN COOK
Commercial Leasing Agent
402.323.3126
lmcook@speedwayproperties.com



Flex Space For Lease

2324 KIMARRA PLACE

2324 Kimarra Place, Lincoln, NE 68508



TOM GIFFORD
Broker
402.326.2413
TJGifford@SpeedwayProperties.com



KERI BOWER
Commercial Leasing Agent
402.323.3127
kabower@speedwayproperties.com

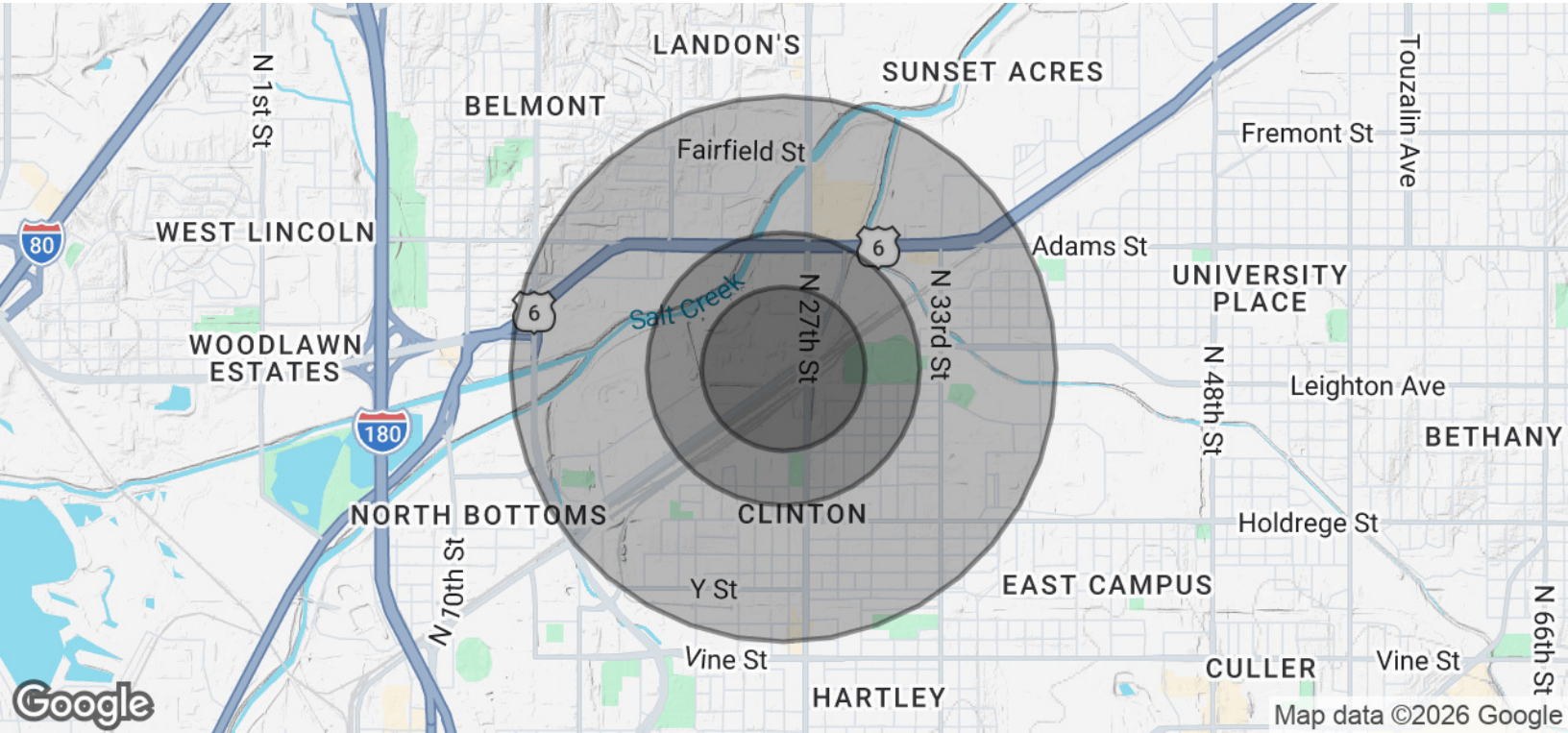


LAUREN COOK
Commercial Leasing Agent
402.323.3126
lmcook@speedwayproperties.com



2324 KIMARRA PLACE

2324 Kimarra Place, Lincoln, NE 68508



POPULATION	0.3 MILES	0.5 MILES	1 MILE
Total Population	291	1,835	9,020
Average Age	32	33	33
Average Age (Male)	32	32	33
Average Age (Female)	33	33	34

HOUSEHOLDS & INCOME	0.3 MILES	0.5 MILES	1 MILE
Total Households	108	671	3,508
# of Persons per HH	2.7	2.7	2.6
Average HH Income	\$52,604	\$58,604	\$60,429
Average House Value	\$133,230	\$152,372	\$173,197

2020 American Community Survey (ACS)



TOM GIFFORD
 Broker
 402.326.2413
 TJGifford@SpeedwayProperties.com



KERI BOWER
 Commercial Leasing Agent
 402.323.3127
 kabower@speedwayproperties.com



LAUREN COOK
 Commercial Leasing Agent
 402.323.3126
 lmcook@speedwayproperties.com