

FOR LEASE

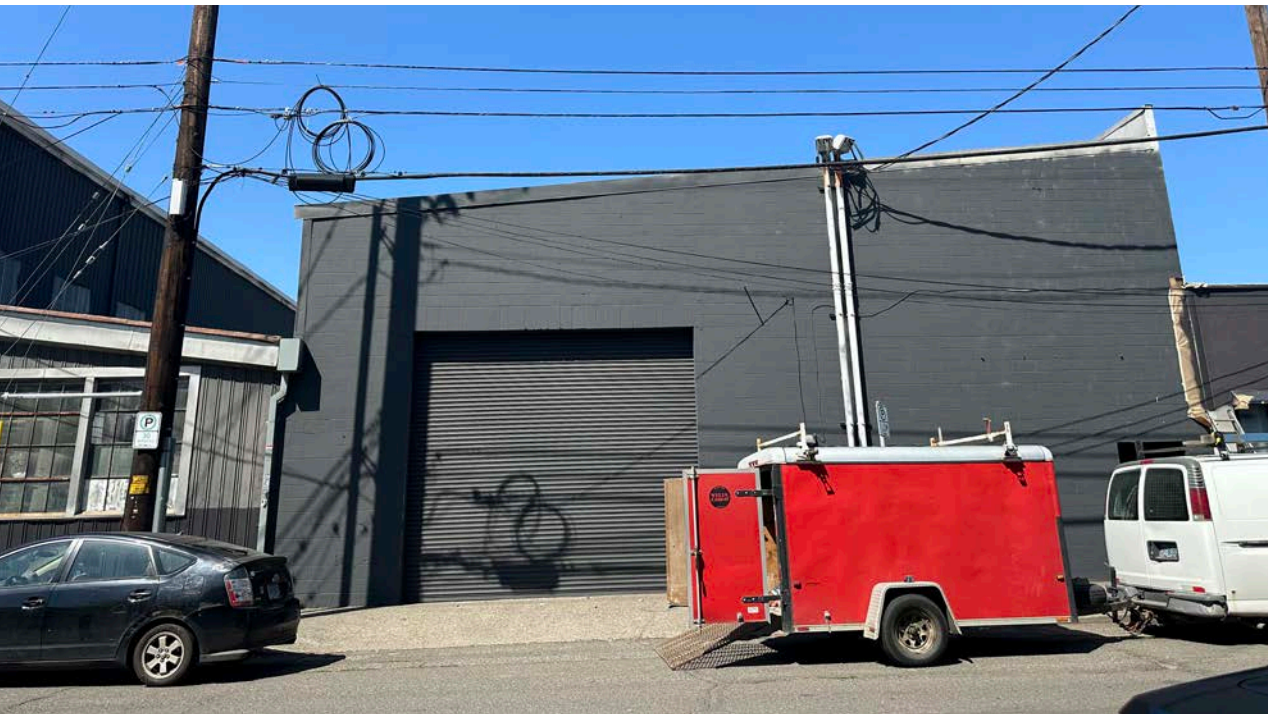
721-723 N TILLAMOOK ST

*18,344 SF Warehouse with Parking/
Outside Storage in North Portland*

PORTLAND, OR 97227



721-723 N TILLAMOOK ST



Owner Open to Short or Long-Term Deal; Rare North Portland Warehouse Building with Yard/Parking.

| | |
|---------------|--|
| ADDRESS | 721-723 N Tillamook St Portland, OR 97227 |
| BUILDING SIZE | 18,344 SF building; with small office/showroom, restrooms, and conference room |
| YARD/PARKING | ±7,500 SF of yard/parking |
| ZONING | General Industrial (IG1), city of Portland, allowing for wide range of industrial uses |
| POWER | 3-phase electrical |
| LOADING | 2 grade-level loading doors |
| VISIBILITY | Excellent visibility on Interstate Ave |
| LEASE RATE | \$0.70 PSF, NNN blended |

18.3K SF

AVAILABLE

\$0.70 PSF

LEASE RATE (NNN BLENDED)

721-723 N TILLAMOOK ST

SITE PLAN

18.3K SF

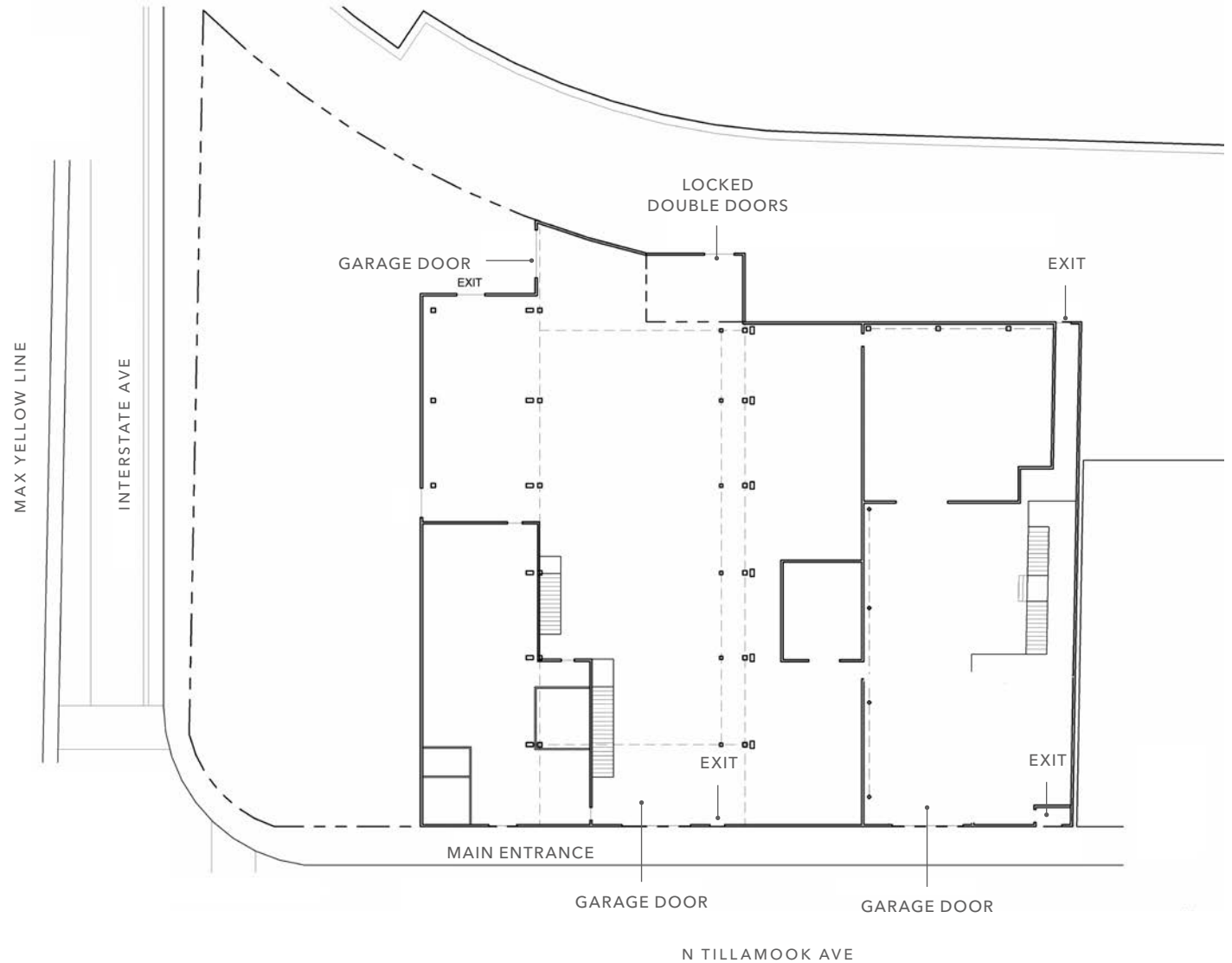
AVAILABLE

7,500 SF

YARD/PARKING AREA

2

GRADE-LEVEL LOADING DOORS

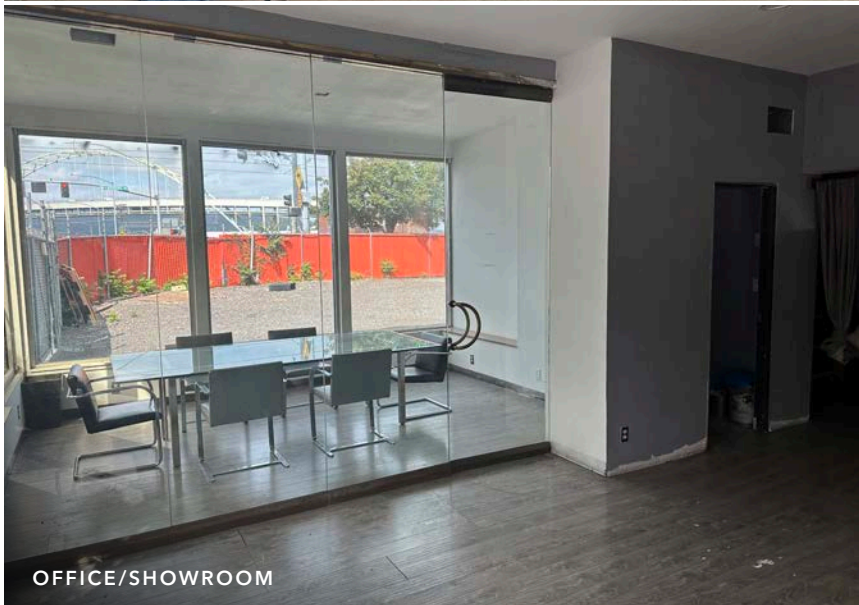




HIGH CLEAR WAREHOUSE



AUTOMATIC GRADE DOOR



OFFICE/SHOWROOM



SECURE YARD/PARKING

721-723 N TILLAMOOK ST

DRIVE TIMES

I-5 Ramp - 5 min

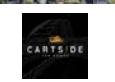
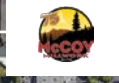
405 Ramp - 5 min

PDX Airport - 25 min

Beaverton - 23 min

Clackamas - 30 min

PORTLAND



NW BROADWAY BRIDGE



Willamette River



MODA CENTER



AVAILABLE FOR LEASE

KIDDER MATHEWS



721-723 N TILLAMOOK ST

*For more information on
this property, please contact*

KARLA HANSEN
503.721.2727
karla.hansen@kidder.com

ZACH FRANCIS
503.221.2290
zach.francis@kidder.com

CHRIS DOWHANIUK
503.789.5308
chris.dowhaniuk@kidder.com

KIDDER.COM

This information supplied herein is from sources we deem reliable. It is provided without any representation, warranty, or guarantee, expressed or implied as to its accuracy. Prospective Buyer or Tenant should conduct an independent investigation and verification of all matters deemed to be material, including, but not limited to, statements of income and expenses. Consult your attorney, accountant, or other professional advisor. All Kidder Mathews designs are the sole property of Kidder Mathews. Branded materials and layouts are not authorized for use by any other firm or person.

