

# THE SEAPORT

RETAIL OPPORTUNITIES AT THE GATEWAY TO THE SEAPORT'S HUB FOR  
DINING, NIGHTLIFE & ENTERTAINMENT

---

1 SEAPORT PLAZA

FRONT STREET  
BETWEEN FULTON & JOHN  
STREETS

SEAPORT ENTERTAINMENT  
GROUP



# THE SEAPORT

## PIER 17

THE ROOFTOP AT PIER 17

gitano CARNE MARE  
The Fulton mister dips

5,923 sf available

## COMING SOON

FLANKER KITCHEN + SPORTING CLUB  
HIDDEN BOOT SALOON MEOW WOLF  
COMING SOON

## SCHERMERHORN ROW

SOUTH STREET SEAPORT MUSEUM  
McNALLY JACKSON INDEPENDENT BOOKSELLERS  
cork WINE BAR

863 sf to 2,500 sf available

## TIN BUILDING

Balloon MUSEUM  
COMING SOON

## FULTON MARKET

THE TUCK ROOM IPIC THE LAWN CLUB SEAPORT

## MUSEUM BLOCK

PUBLIC RECORDS  
COMING SOON

SADIE'S

Willett's  
COMING SOON

1,241 sf to 2,981 sf available

## 117 BEEKMAN STREET

3,699 sf available

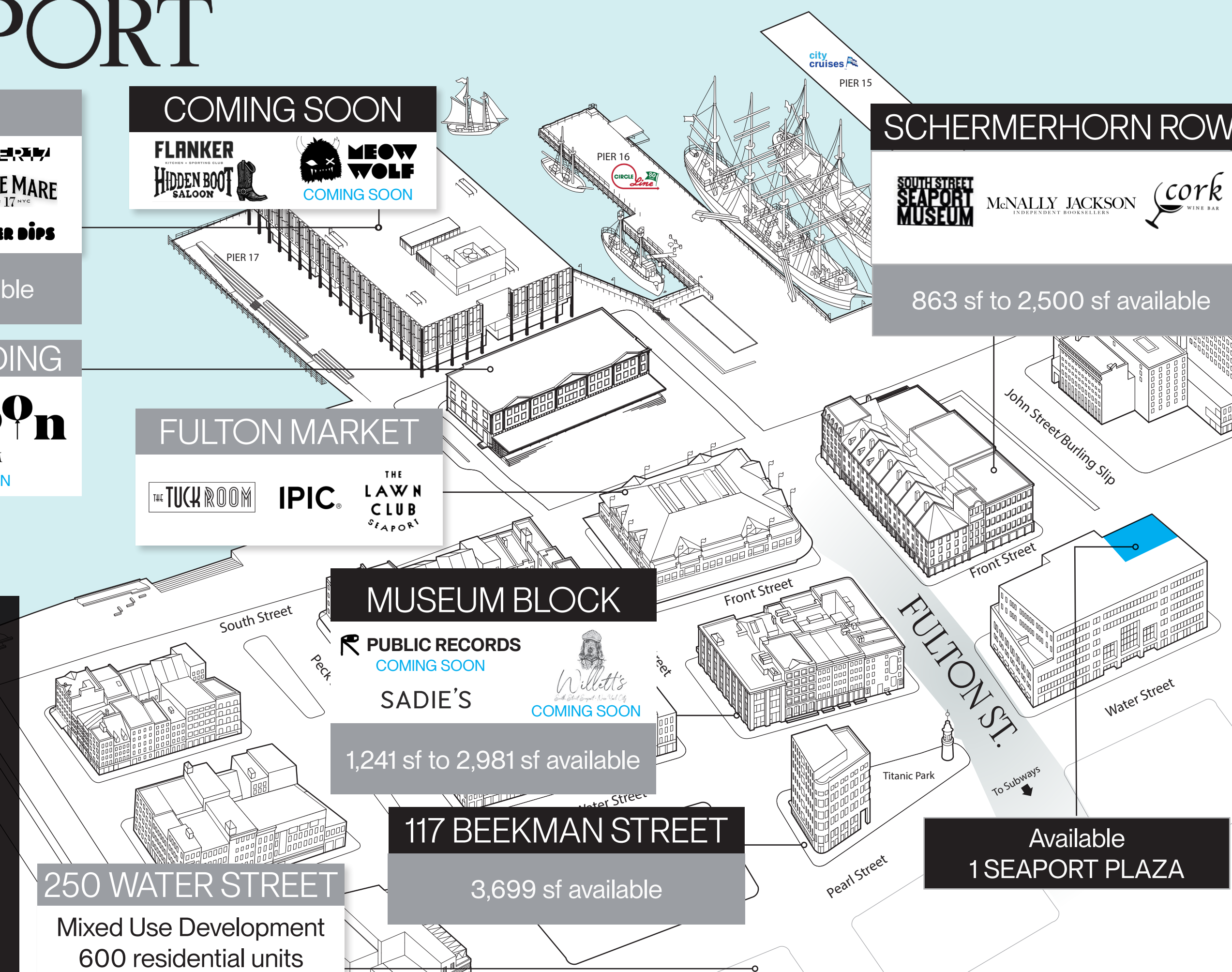
## 250 WATER STREET

Mixed Use Development  
600 residential units

Available  
1 SEAPORT PLAZA

## WELCOME TO THE SEAPORT

A historic neighborhood reborn. Where iconic waterfront landmarks meet modern culinary, cultural & entertainment experiences, captivating all who venture here.



# RETAIL AVAILABILITIES

GROUND LEVEL

Available  
1 SEAPORT PLAZA



1 SEAPORT PLAZA

Front St.

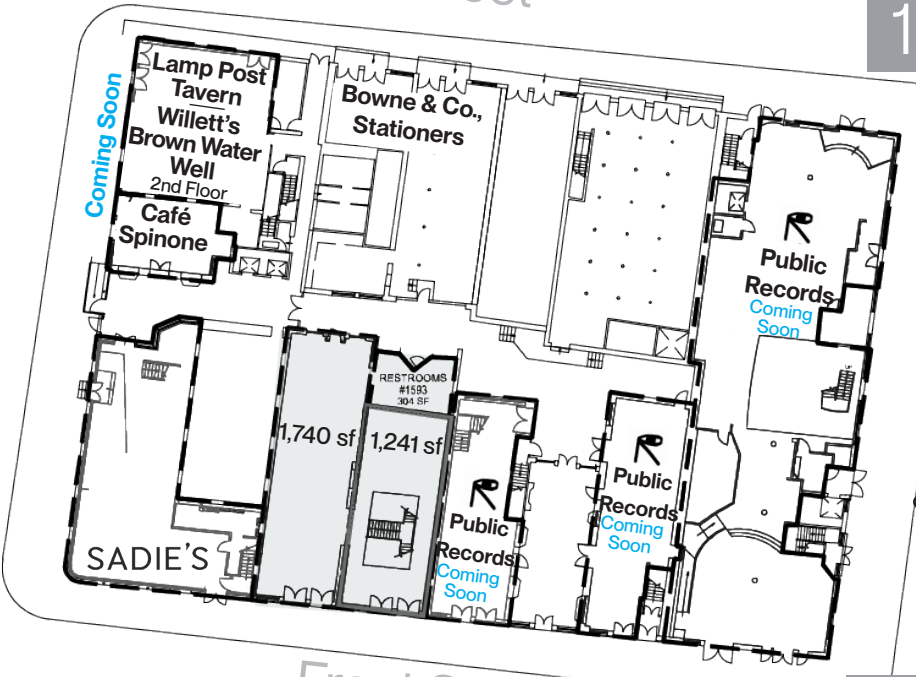
Water St.

The Titanic Memorial Lighthouse



Water Street

117 BEEKMAN ST.

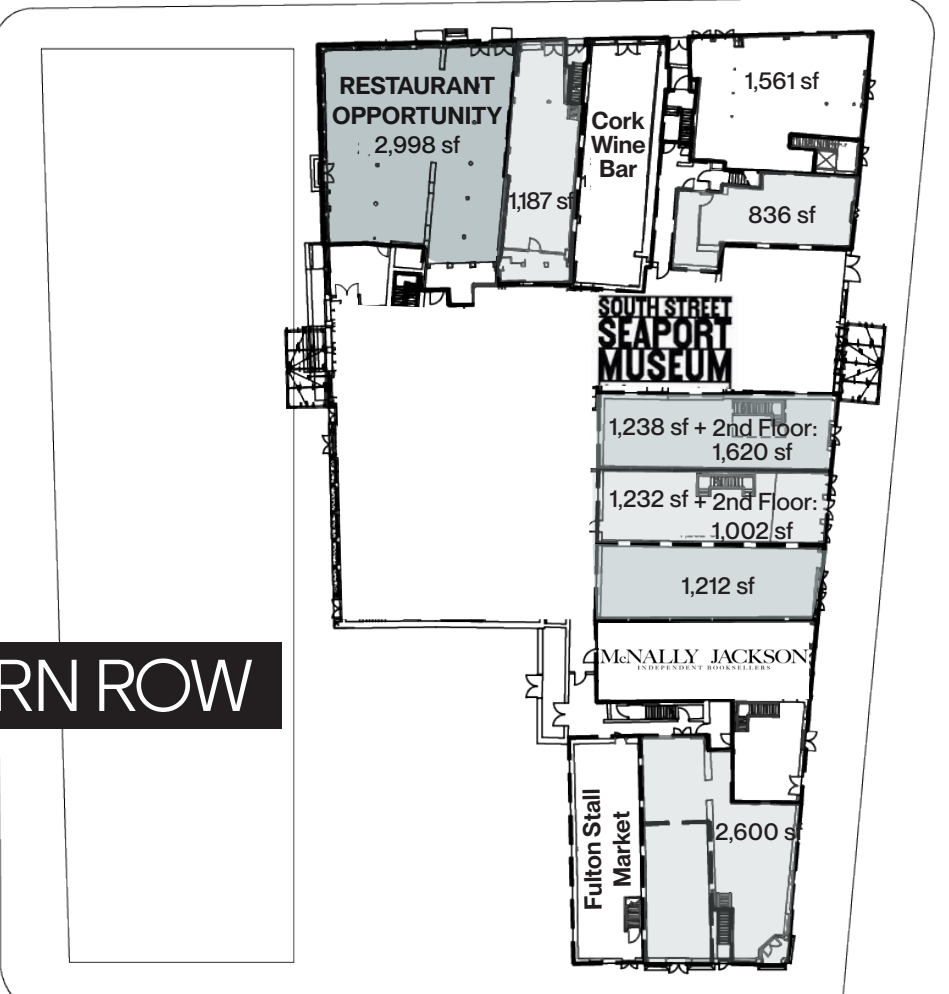


Beekman St.

MUSEUM BLOCK

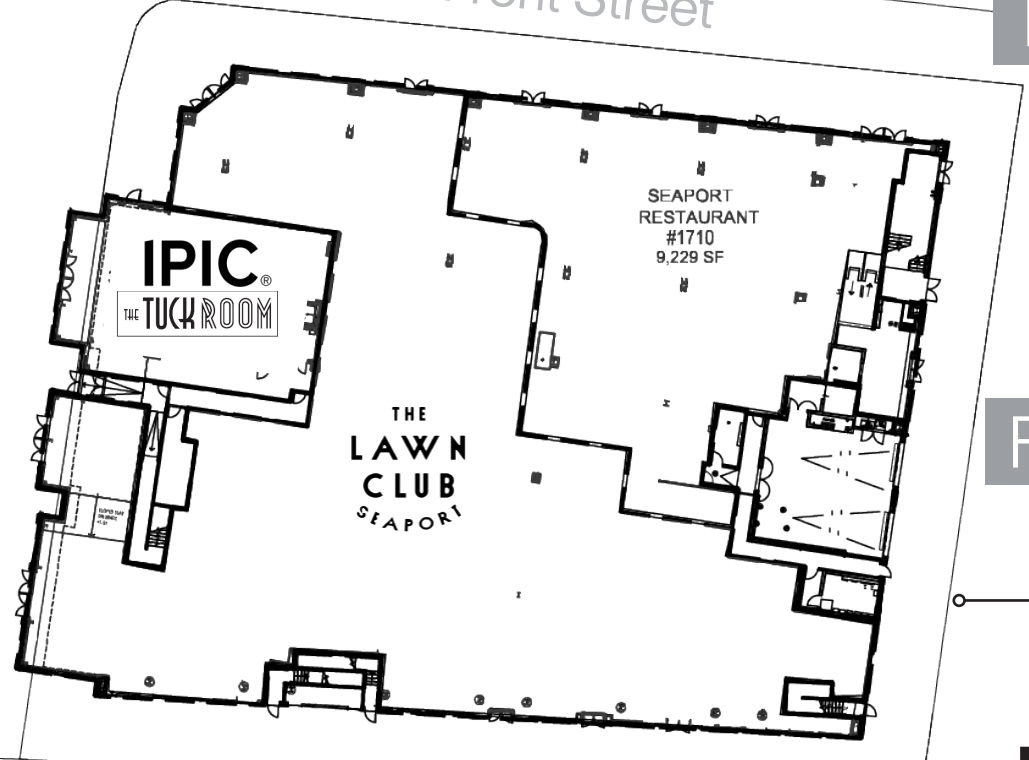
John St.

SCHERMERHORN ROW



Fulton St.

Front Street



FULTON MARKET

South St.

TIN BUILDING

# 1 SEAPORT PLAZA



# 1 SEAPORT PLAZA

## THE OPPORTUNITIES

### Location:

Front Street, between Fulton & John Streets

### Retail 1

**Ground Floor:** 562 sf

**Frontage:** 53' wraparound

**Possession:** Immediate

**Status:** Available

### Retail 2

**Ground Floor:** 1,868 sf

**Frontage:** 113' on Front Street

**Possession:** Arranged

**Status:** Available

### Retail 3

**Ground Floor:** 429 sf

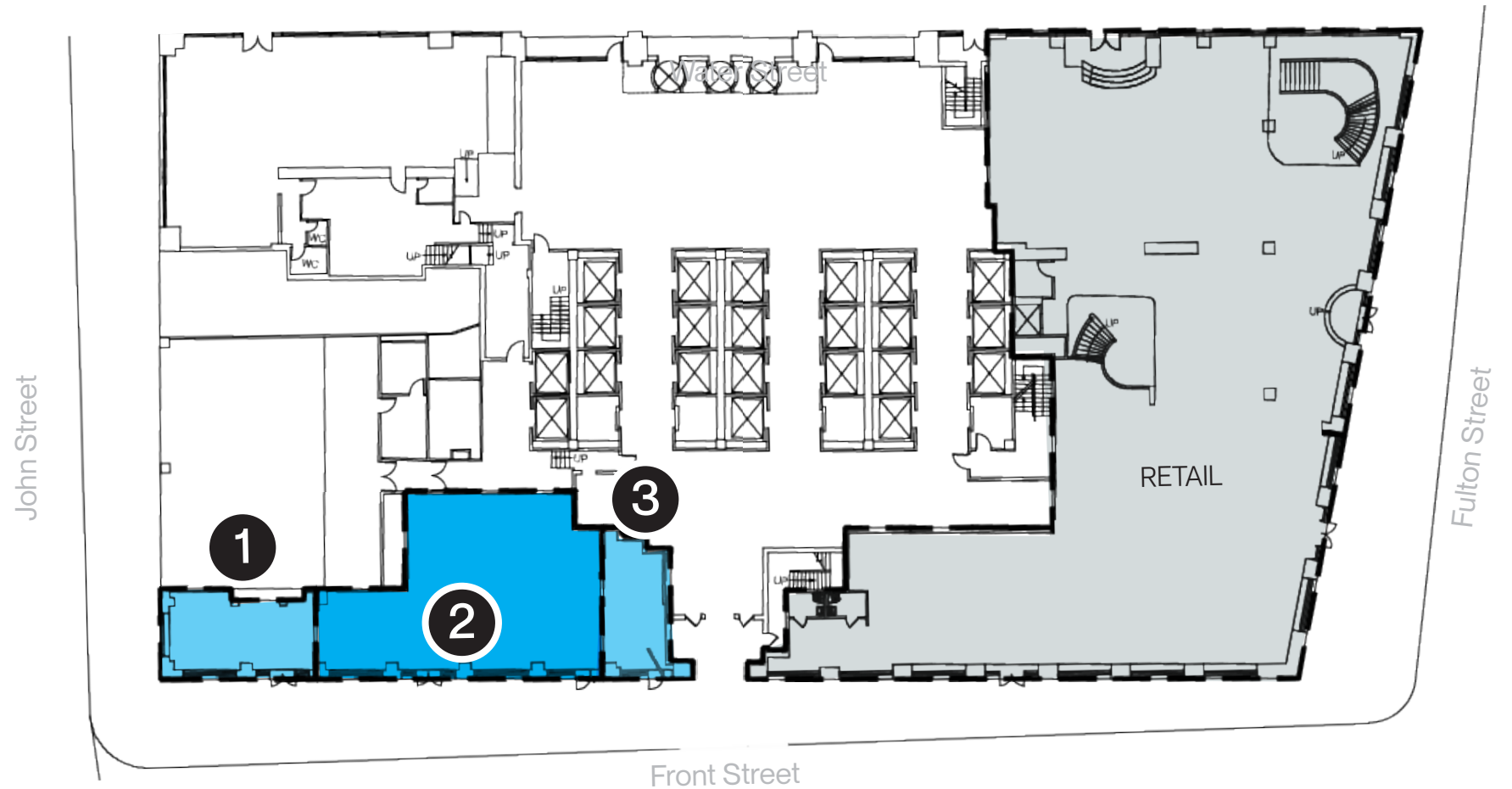
**Frontage:** 18' on Front Street

**Possession:** Immediate

**Status:** Available

**Note:** Spaces can be combined

### Ground Floor



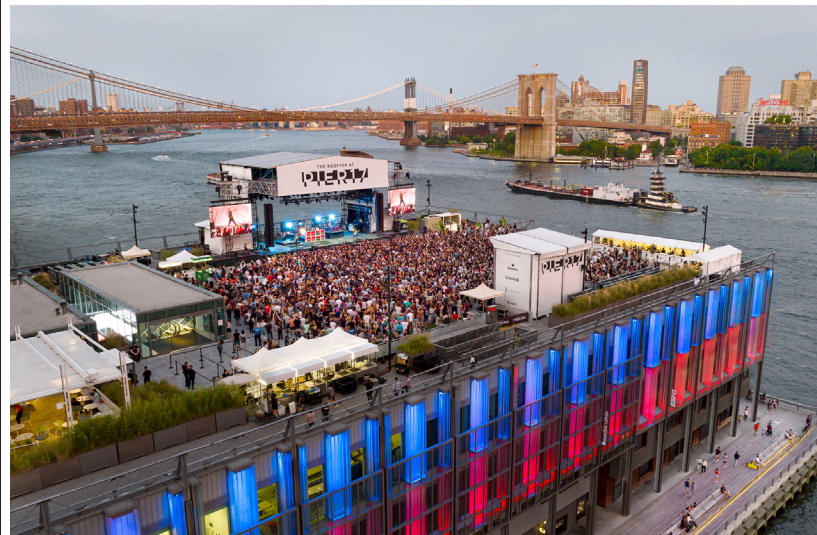
# THE SEAPORT



For further information, please contact Exclusive Leasing Agents:

Corey J. Zolcinski 212.812.5707  
Matthew Schuss 212.812.5938

corey.zolcinski@jll.com  
matthew.schuss@jll.com



**SEAPORT** ENTERTAINMENT GROUP



Jones Lang LaSalle Brokerage, Inc. | 330 Madison Avenue New York, NY 10017

Although information has been obtained from sources deemed reliable, neither Owner nor JLL makes any guarantees, warranties or representations, express or implied, as to the completeness or accuracy as to the information contained herein. Any projections, opinions, assumptions or estimates used are for example only. There may be differences between projected and actual results, and those differences may be material. The Property may be withdrawn without notice. Neither Owner nor JLL accepts any liability for any loss or damage suffered by any party resulting from reliance on this information. If the recipient of this information has signed a confidentiality agreement regarding this matter, this information is subject to the terms of that agreement. ©2026 Jones Lang LaSalle IP, Inc. All rights reserved.

